



 Single Family  2662 SQFT  4 Beds  3 Baths  0.14 Acre

## PROPERTY DETAILS

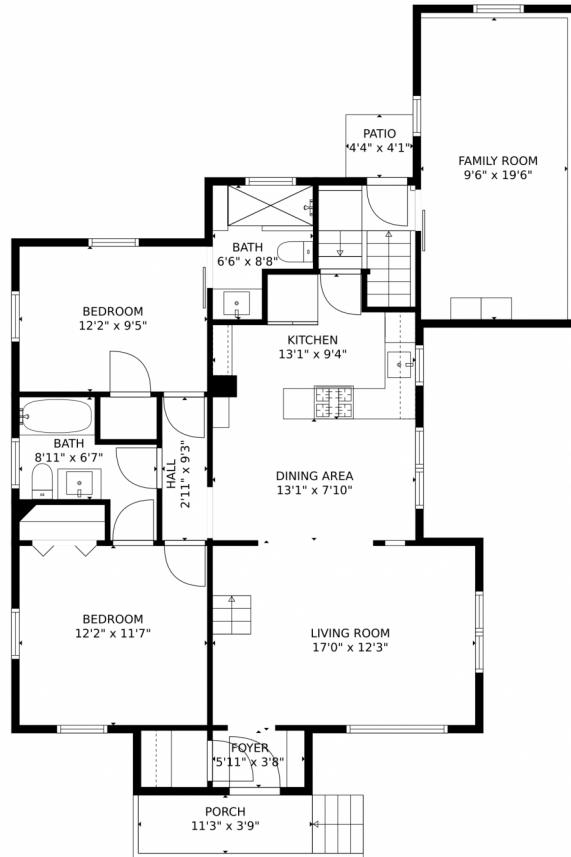
Your chance to own a piece of 5280 is here! This is a charming 4 bed 3 bath home located in a prime location near Tennyson Street and Lakeside. It has quick access to I-70 for mountain getaways and a large park with a lake nearby for outdoor activities. This gem has been fully renovated from top to bottom with modern features, while maintaining an eclectic charm. Home is updated with newer roof, gutters, vinyl siding, newly remodeled main floor bathroom, new HVAC system, and more! Surprisingly bigger than it looks on the outside. Exquisite open kitchen featuring gas range, copper accents, stunning quartz countertops, and a cozy breakfast nook to enjoy meals around. The home also comes with built-in raised garden beds and a fully refinished attic flex space perfect for relaxing. The living area is open and spacious with abundant natural light. Additionally, there is a lovely covered courtyard patio with a built in fireplace, a large storage shed and a large yard blooming with Irises and roses for you to enjoy. This 2662 sq ft home is surprisingly bigger than it looks from the outside. Don't miss out on this delightful home!



**Laura Gilsdorf**  
720-530-9085  
laura.gilsdorf@madisonprops.com



# 5280 W 41st Avenue, Wheat Ridge, CO 80212 – Main Level



GROSS INTERNAL AREA  
FLOOR 1: 877 sq. ft., FLOOR 2: 1126 sq. ft.  
FLOOR 3: 491 sq. ft., FLOOR 4: 68 sq. ft.  
EXCLUDED AREAS: , PATIO: 262 sq. ft.  
PORCH: 42 sq. ft.  
TOTAL: 2562 sq. ft.

MEASUREMENTS CALCULATED BY V1Photos.COM ARE DEEMED HIGHLY RELIABLE BUT NOT GUARANTEED.



Disclaimer: Sizes and Dimensions are Approximate, Actual May Vary.



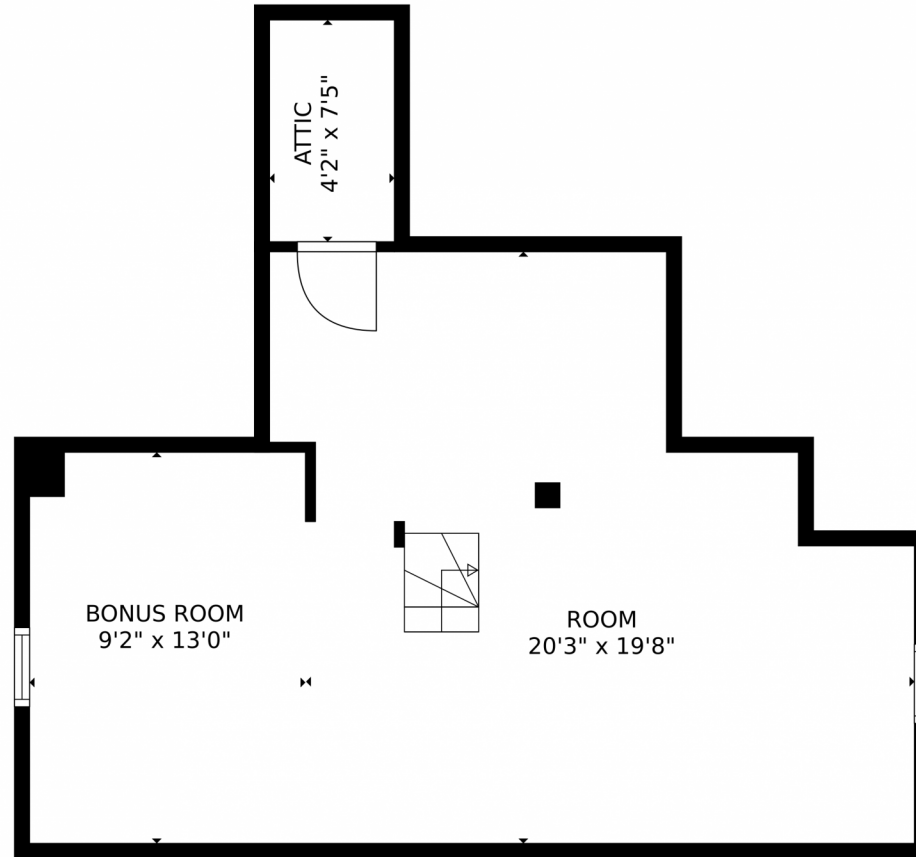
**Laura Gilsdorf**  
720-530-9085  
laura.gilsdorf@madisonprops.com



Scan code for more property details

A QR code is located to the right of the text. Below the QR code is a small icon of a smartphone displaying a green checkmark.

5280 W 41st Avenue, Wheat Ridge, CO 80212 – Second Level



GROSS INTERNAL AREA  
FLOOR 1: 877 sq. ft., FLOOR 2: 1126 sq. ft.  
FLOOR 3: 491 sq. ft., FLOOR 4: 68 sq. ft.  
EXCLUDED AREAS: , PATIO: 262 sq. ft.  
PORCH: 42 sq. ft.  
TOTAL: 2562 sq. ft.  
MEASUREMENTS CALCULATED BY V1Photos.com ARE DEEMED HIGHLY RELIABLE BUT NOT GUARANTEED.



Disclaimer: Sizes and Dimensions are Approximate, Actual May Vary.



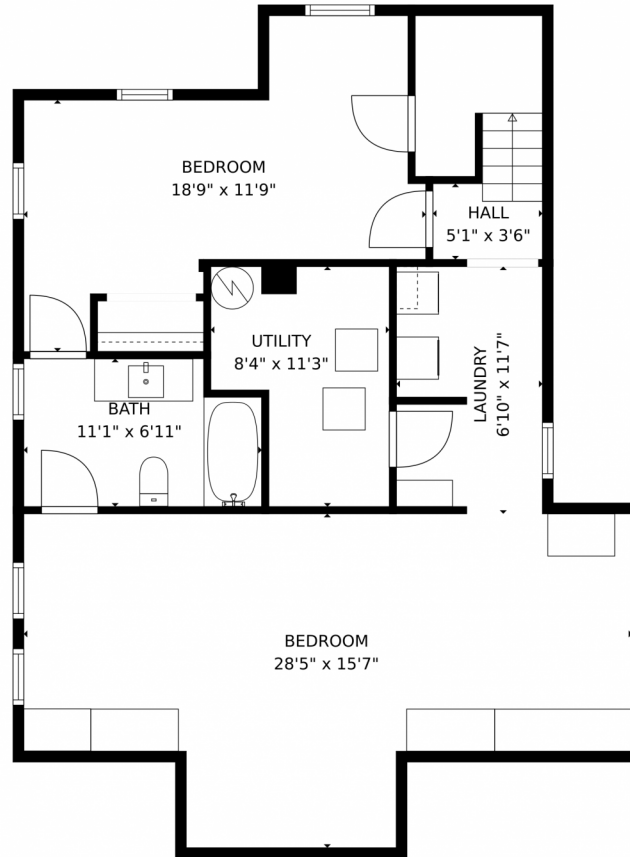
**Laura Gilsdorf**  
720-530-9085  
laura.gilsdorf@madisonprops.com



Scan code  
for more  
property  
details



5280 W 41st Avenue, Wheat Ridge, CO 80212 – Basement



GROSS INTERNAL AREA  
FLOOR 1: 877 sq. ft., FLOOR 2: 1126 sq. ft.  
FLOOR 3: 491 sq. ft., FLOOR 4: 68 sq. ft.  
EXCLUDED AREAS: , PATIO: 262 sq. ft.  
PORCH: 42 sq. ft.  
TOTAL: 2562 sq. ft.  
MEASUREMENTS CALCULATED BY V1Photos.com ARE DEEMED HIGHLY RELIABLE BUT NOT GUARANTEED.



Disclaimer: Sizes and Dimensions are Approximate, Actual May Vary.

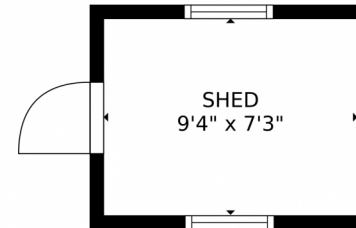
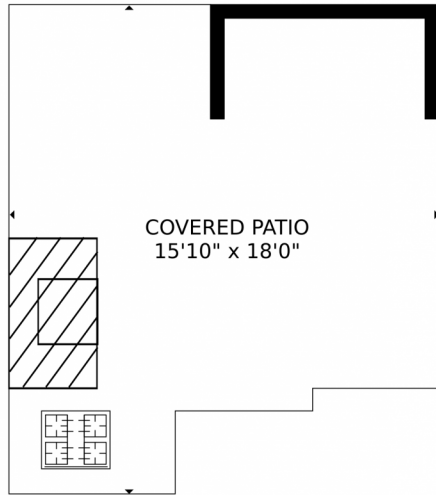


**Laura Gilsdorf**  
720-530-9085  
laura.gilsdorf@madisonprops.com



Scan code  
for more  
property  
details





GROSS INTERNAL AREA  
FLOOR 1: 877 sq. ft., FLOOR 2: 1126 sq. ft.  
FLOOR 3: 491 sq. ft., FLOOR 4: 68 sq. ft.  
EXCLUDED AREAS: , PATIO: 262 sq. ft.  
PORCH: 42 sq. ft.  
TOTAL: 2562 sq. ft.

MEASUREMENTS CALCULATED BY V1Photos.com ARE DEEMED HIGHLY RELIABLE BUT NOT GUARANTEED.



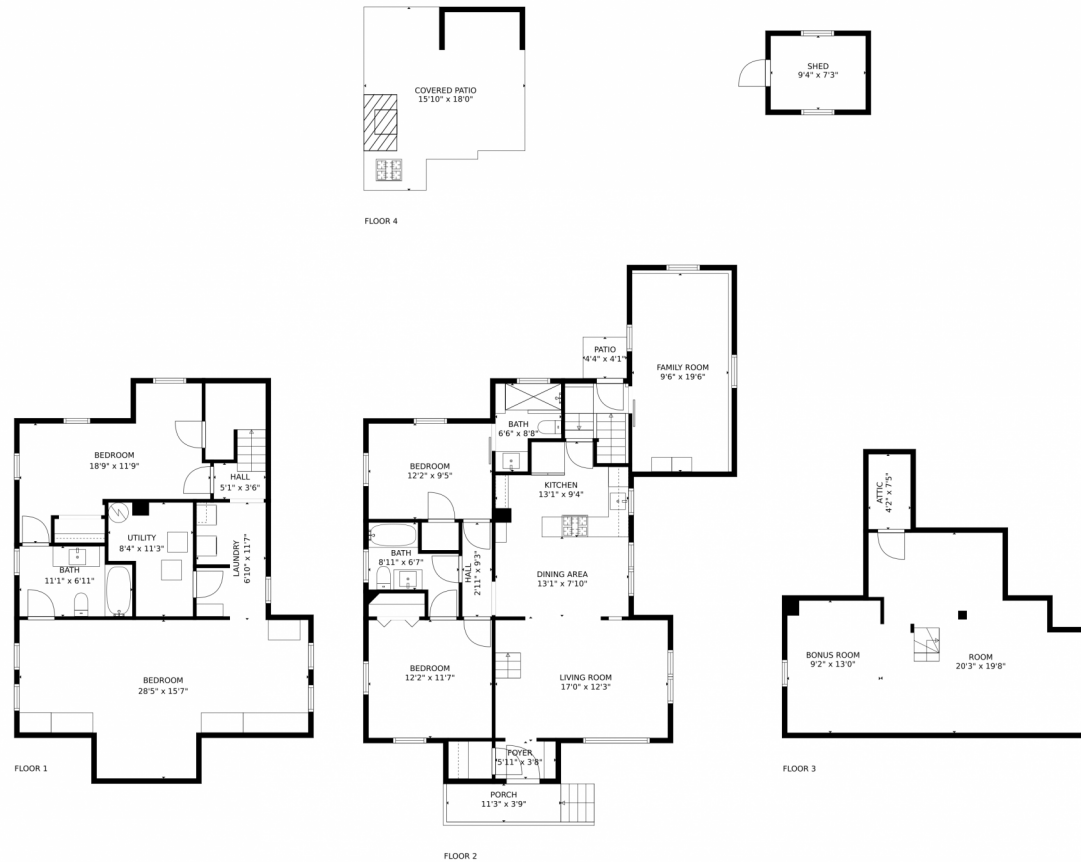
Disclaimer: Sizes and Dimensions are Approximate, Actual May Vary.



**Laura Gilsdorf**  
720-530-9085  
laura.gilsdorf@madisonprops.com



# 5280 W 41st Avenue, Wheat Ridge, CO 80212 – All Levels



GROSS INTERNAL AREA  
FLOOR 1: 877 sq. ft., FLOOR 2: 1126 sq. ft.  
FLOOR 3: 491 sq. ft., FLOOR 4: 68 sq. ft.  
EXCLUDED AREAS: , PATIO: 262 sq. ft.  
PORCH: 42 sq. ft.  
TOTAL: 2562 sq. ft.

MEASUREMENTS CALCULATED BY V1Photos.com ARE DEEMED HIGHLY RELIABLE BUT NOT GUARANTEED.



Disclaimer: Sizes and Dimensions are Approximate, Actual May Vary.



Laura Gilsdorf  
720-530-9085  
laura.gilsdorf@madisonprops.com

