




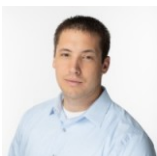
 Single Family

 1250 SQFT

 3 Beds

 2 Baths

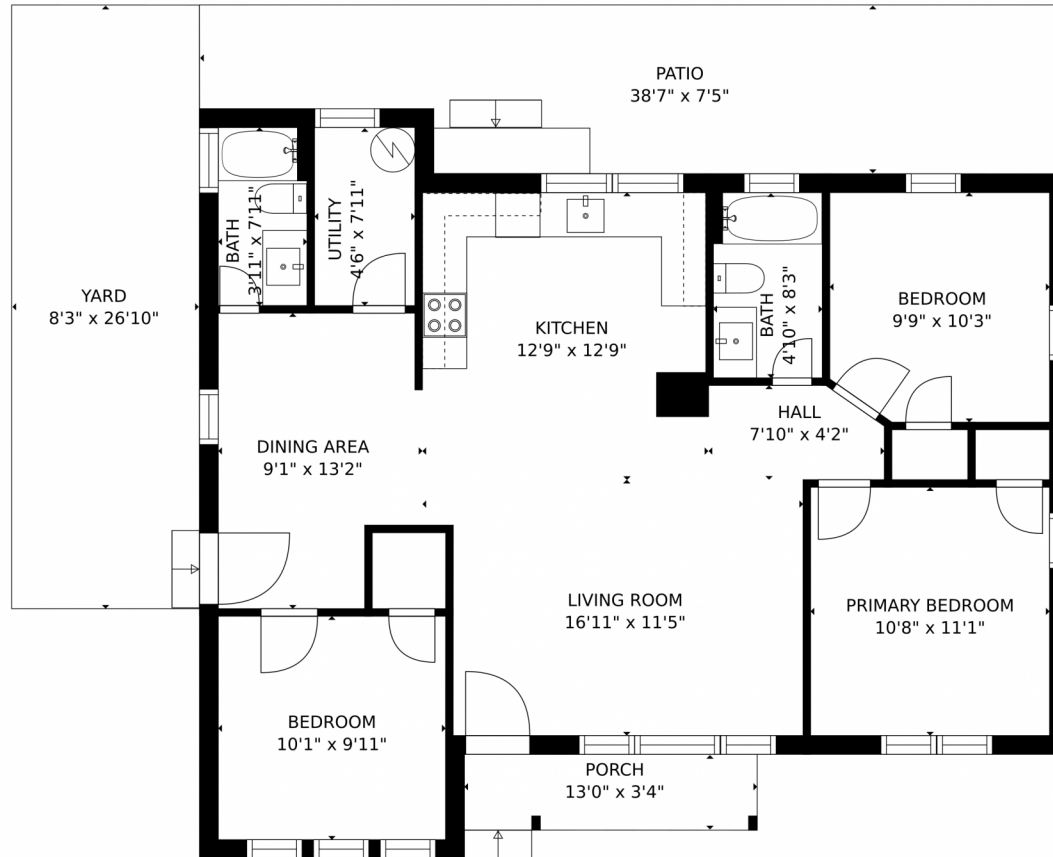
 2 Car



Jordan Kermes
952-956-2958
jordan@kermesllc.com



1600 Berkley Ave, Pueblo, CO 81004 – Main Level



GROSS INTERNAL AREA
FLOOR 1: 965 sq. ft. EXCLUDED AREAS:
PATIO: 260 sq. ft. PORCH: 44 sq. ft
TOTAL: 965 sq. ft
MEASUREMENTS CALCULATED BY V1Photos.COM ARE DEEMED HIGHLY RELIABLE BUT NOT GUARANTEED.



Disclaimer: Sizes and Dimensions are Approximate, Actual May Vary.



Jordan Kermes
952-956-2958
jordan@kermesllc.com

