



25120 E. Phillips Dr. Aurora CO 80016
 Aurora, CO 80016
 COMMUNITY: Whispering Pines

MLS # 3344100
 PRICE \$619,990



Single Family 3038 SQFT 2 Beds 2 Baths 2 Car 0.08 Acre

PROPERTY DETAILS

This property is at the very top of the Real Estate food chain, especially under \$620K. Tremendous One Owner Pride, never listed for-sale before now - 100% incredible. The Curb Appeal & Greenbelt Location is absolutely Picturesque and has a setting of your dreams. Mirror, mirror, on the wall, who's the fairest of them all? If there were a house that could be named 'Snow White' this One Owner Property would be it! Very Rare Interior Private Greenbelt location (Amazingly Quiet & Serene) - 100% incredible. The floor plan is amazing and feels grand throughout, with upgrades through the roof. Also the Pro-landscaping & Greenbelt is taken care of for you, no maintenance. Truly has all the features you look for: Top of the line finishes, both inside & out. Outstanding General Location, Outstanding Neighborhood Location, Outstanding Condition, Outstanding Personality, & the Greenbelt VIEWS will KNOCK YOUR SOCKS OFF! Professionally landscaped - absolutely designed to delight. The fit, finish, and upgrades are splendid. Dazzling Eat-in kitchen & Large comfortable Great Room with ample space for fun gatherings with friends, neighbors, and family. Gracious Living Abounds. Charming curb appeal with attention to architectural detail (Very crisp & clean). 2 car attached garage with room for all your vehicles and storage galore. Giant Full Basement with 9 Foot Ceilings. Quick access to Cherry Creek Schools, parks, shopping, and transportation. Don't miss this opportunity to own an exceptional



Shawn Engel
 303-308-8000
 shawnengel@earthlink.net
<http://www.corealestateonline.com>



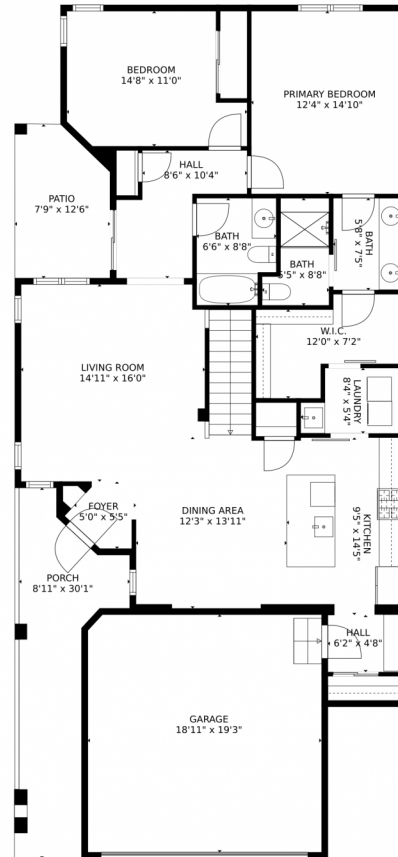
property....See it today!



Shawn Engel
303-308-8000
shawnengel@earthlink.net
<http://www.corealestateonline.com>



25120 E. Phillips Dr. Aurora CO 80016, Aurora, CO 80016 – Main Level



GROSS INTERNAL AREA
FLOOR 1: 70 sq. ft, FLOOR 2: 1352 sq. ft
EXCLUDED AREAS: , UNFINISHED BASEMENT: 1295 sq. ft
GARAGE: 365 sq. ft, PATIO: 89 sq. ft
PORCH: 167 sq. ft
TOTAL: 1422 sq. ft

MEASUREMENTS CALCULATED BY V1Photos.com ARE DEEMED HIGHLY RELIABLE BUT NOT GUARANTEED.



Disclaimer: Sizes and Dimensions are Approximate, Actual May Vary.



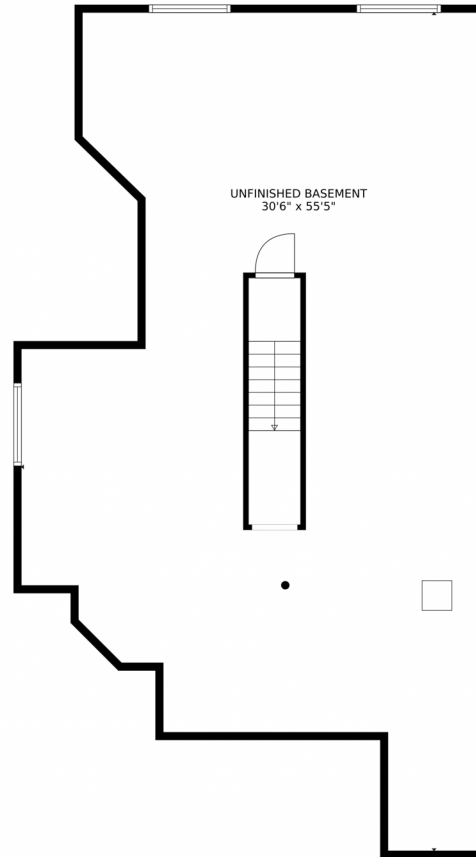
Shawn Engel
303-308-8000
shawnengel@earthlink.net
<http://www.corealestateonline.com>



Scan code
for more
property
details



25120 E. Phillips Dr. Aurora CO 80016, Aurora, CO 80016 – Lower Level



GROSS INTERNAL AREA
FLOOR 1: 70 sq. ft, FLOOR 2: 1352 sq. ft
EXCLUDED AREAS: , UNFINISHED BASEMENT: 1295 sq. ft
GARAGE: 365 sq. ft, PATIO: 89 sq. ft
PORCH: 167 sq. ft
TOTAL: 1422 sq. ft

MEASUREMENTS CALCULATED BY V1Photos.COM ARE DEEMED HIGHLY RELIABLE BUT NOT GUARANTEED.



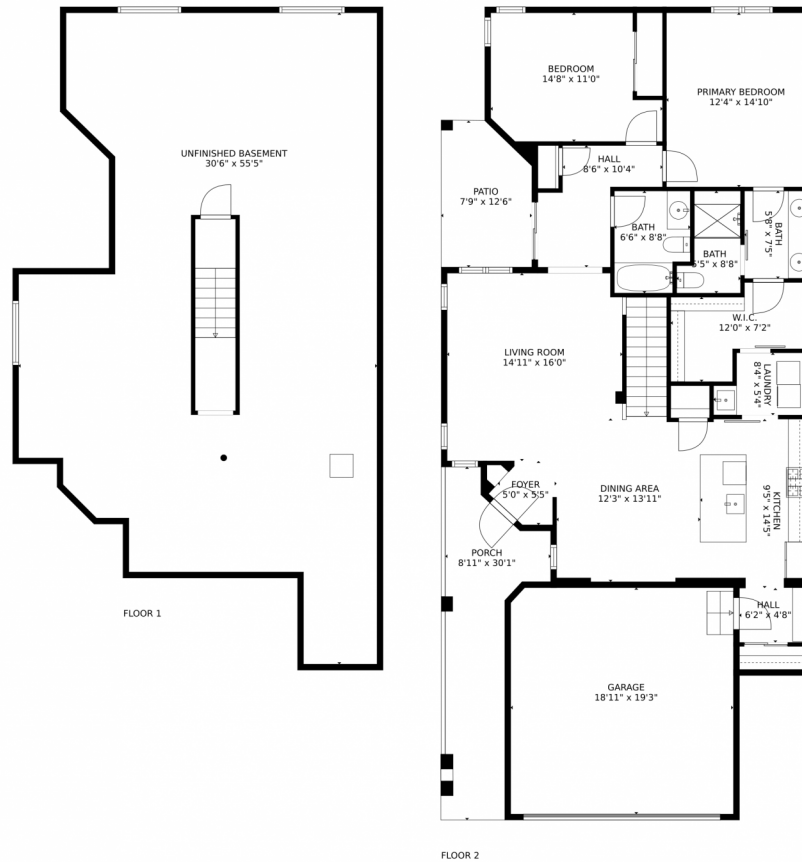
Disclaimer: Sizes and Dimensions are Approximate, Actual May Vary.



Shawn Engel
303-308-8000
shawnengel@earthlink.net
<http://www.corealestateonline.com>



25120 E. Phillips Dr. Aurora CO 80016, Aurora, CO 80016 – All Levels



GROSS INTERNAL AREA
FLOOR 1: 70 sq. ft., FLOOR 2: 1352 sq. ft.
EXCLUDED AREAS: , UNFINISHED BASEMENT: 1295 sq. ft.
GARAGE: 365 sq. ft., PATIO: 89 sq. ft.
PORCH: 167 sq. ft.
TOTAL: 1422 sq. ft.

MEASUREMENTS CALCULATED BY V1Photos.com ARE DEEMED HIGHLY RELIABLE BUT NOT GUARANTEED.

Disclaimer: Sizes and Dimensions are Approximate, Actual May Vary.



Shawn Engel
303-308-8000
shawnengel@earthlink.net
<http://www.corealestateonline.com>



Scan code
for more
property
details

