



26872 East Byers Avenue  
 Aurora, CO 80018  
 COMMUNITY: Harmony



Single Family



2203 SQFT



3 Beds



2/1 Baths



2 Car



0.15 Acre



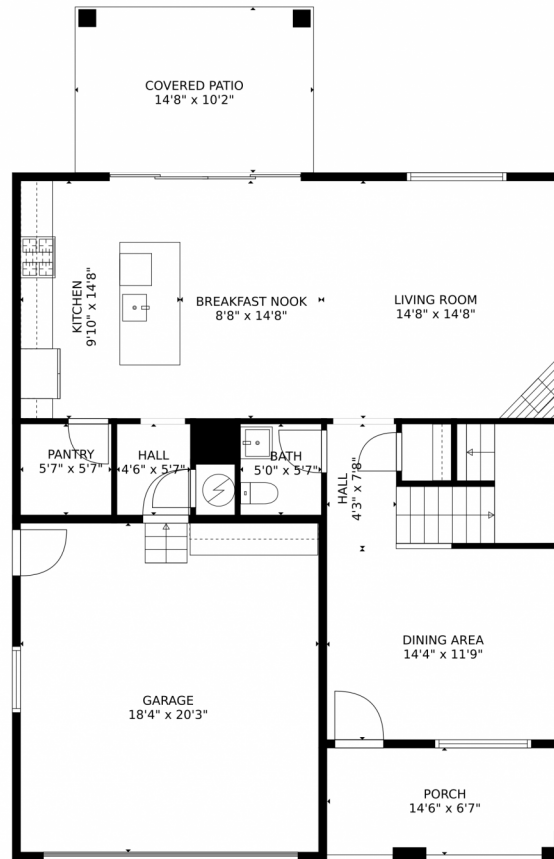
**Beth Anne Demeter**  
 720-320-1150  
 bethanne.demeter@gmail.com



Scan code  
 for more  
 property  
 details



# 26872 East Byers Avenue, Aurora, CO 80018 – Main Level



GROSS INTERNAL AREA  
FLOOR 1: 882 sq. ft, FLOOR 2: 1159 sq. ft  
EXCLUDED AREAS: , GARAGE: 372 sq. ft  
PATIO: 150 sq. ft, PORCH: 96 sq. ft  
TOTAL: 2041 sq. ft  
MEASUREMENTS CALCULATED BY V1Photos.com ARE DEEMED HIGHLY RELIABLE BUT NOT GUARANTEED.



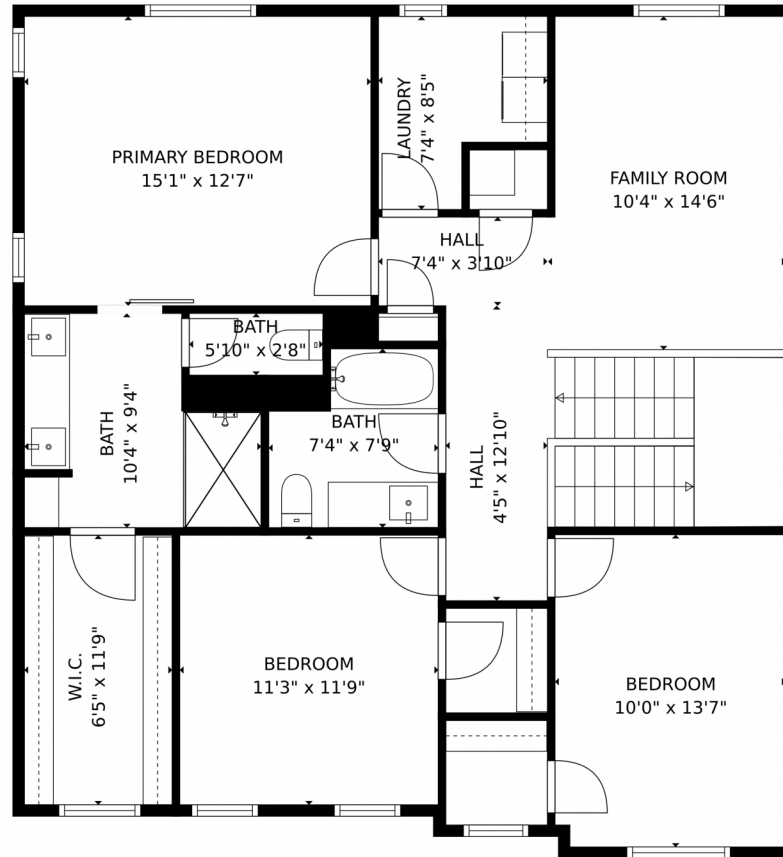
Disclaimer: Sizes and Dimensions are Approximate, Actual May Vary.



**Beth Anne Demeter**  
720-320-1150  
bethanne.demeter@gmail.com



26872 East Byers Avenue, Aurora, CO 80018 – Upper Level



GROSS INTERNAL AREA  
FLOOR 1: 882 sq. ft. FLOOR 2: 1159 sq. ft  
EXCLUDED AREAS: , GARAGE: 372 sq. ft  
PATIO: 150 sq. ft. PORCH: 96 sq. ft  
TOTAL: 2041 sq. ft  
MEASUREMENTS CALCULATED BY V1Photos.COM ARE DEEMED HIGHLY RELIABLE BUT NOT GUARANTEED.



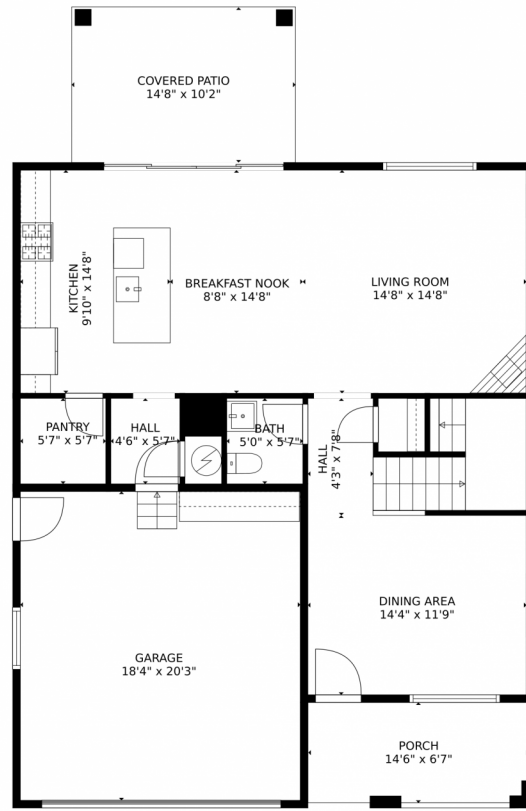
Disclaimer: Sizes and Dimensions are Approximate, Actual May Vary.



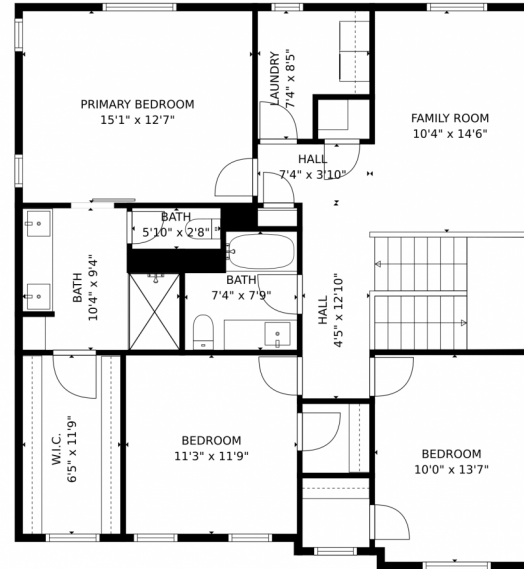
**Beth Anne Demeter**  
720-320-1150  
bethanne.demeter@gmail.com



# 26872 East Byers Avenue, Aurora, CO 80018 – All Levels



FLOOR 1



FLOOR 2

GROSS INTERNAL AREA  
FLOOR 1: 882 sq. ft. FLOOR 2: 1159 sq. ft.  
EXCLUDED AREAS: GARAGE: 372 sq. ft.  
PATIO: 150 sq. ft. PORCH: 96 sq. ft.  
TOTAL: 2041 sq. ft.

MEASUREMENTS CALCULATED BY V1Photos.COM ARE DEEMED HIGHLY RELIABLE BUT NOT GUARANTEED.



Disclaimer: Sizes and Dimensions are Approximate, Actual May Vary.



**Beth Anne Demeter**  
720-320-1150  
bethanne.demeter@gmail.com

