



12253 S Kuehster Road
 Littleton, CO 80127
 COMMUNITY: Critchell

MLS # 2606986
 PRICE \$685,000



Single Family 2802 SQFT 4 Beds 2/1 Baths 2 Car 4.38 Acre

PROPERTY DETAILS

FULL PHOTOS AVAILABLE THURSDAY 5/4. With over 4 Acres and your own slice of Deer Creek running through the property, this 4 bedroom mountain retreat will naturally call to you. The indoor/outdoor spaces flow naturally together with huge picture windows and access to patio from the kitchen to enjoy the sounds of the creek, the lush green yards, and woods to explore. This is truly a nature lover's property. The home has recently had some updates, with a new open floorplan for the main level kitchen/dining area. A beautiful space for cooking and entertaining, the updated kitchen features new cabinets and butcher block countertops, plus new stainless steel appliances. Upstairs are 3 bedrooms - 2 guest rooms and 1 full hall bath plus the master bedroom and bathroom. The lower level features a large living room with wood-burning fireplace and more large windows to enjoy snowy winter days. A 4th bedroom/office and laundry room on the lower level, which walks out to the oversized 2 car garage that has a extra workspace, a workbench and access to the back yard. Unfinished basement has tons of storage space. Large shed off patio, with lots of room for outdoor storage. 2 more outbuildings on the property, can be used as a coop, shed, or other purposes. This creates a small ranch feel, with room for a nice size family, workspaces, outbuildings, natural water running through, woods, and tons of usable space. Property being sold as-is, seller re-locating out of state. Seller



K.C. Golfopoulos
 720-750-2269
 mountainrealtykc@gmail.com
<https://mountainrealtycolorado.com/>



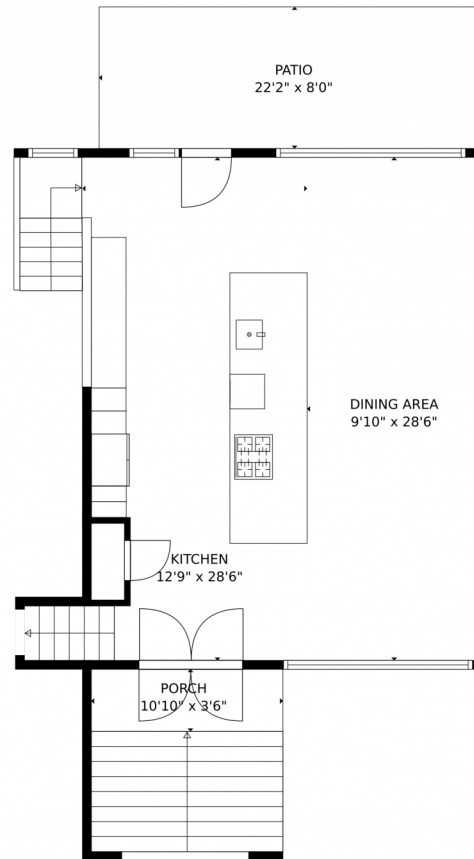
is offering a \$10,000 credit at closing to provide for new carpet and other finishing touches/updates you want to add. Just 15 minutes to 470 and Kipling, yet in the heart of the foothills, this home is a true mountain escape but not far from the essentials. Move in and make this one yours! OPEN HOUSE SATURDAY 5/6 11am-1pm.



K.C. Golfinopoulos
720-750-2269
mountainrealtykc@gmail.com
<https://mountainrealtycolorado.com/>



12253 S Kuehster Road, Littleton, CO 80127 – 1st Floor



GROSS INTERNAL AREA
FLOOR 1: 132 sq. ft. FLOOR 2: 555 sq. ft.
FLOOR 3: 671 sq. ft. FLOOR 4: 728 sq. ft.
EXCLUDED AREAS: UNFINISHED BASEMENT: 522 sq. ft.
GARAGE: 430 sq. ft. PATIO: 177 sq. ft.
PORCH: 112 sq. ft.
TOTAL: 2085 sq. ft.

MEASUREMENTS CALCULATED BY V1Photos.COM ARE DEEMED HIGHLY RELIABLE BUT NOT GUARANTEED.

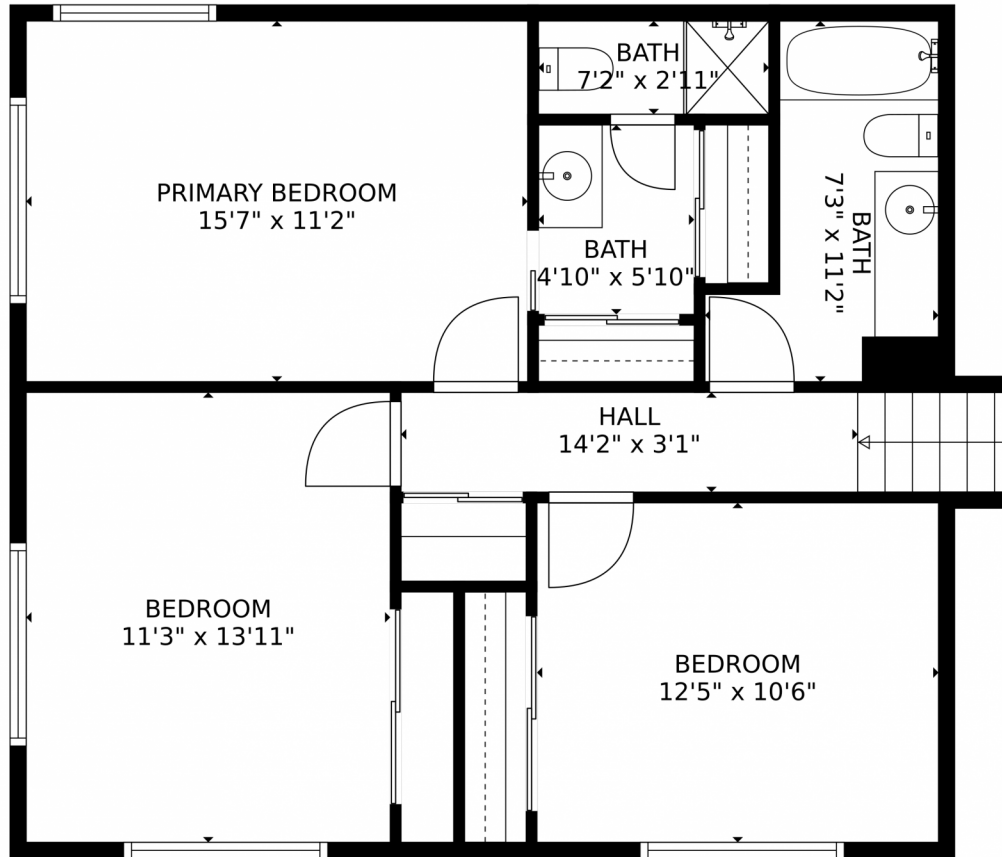


Disclaimer: Sizes and Dimensions are Approximate, Actual May Vary.



K.C. Golfopoulos
720-750-2269
mountainrealtykc@gmail.com
<https://mountainrealtycolorado.com/>





GROSS INTERNAL AREA
FLOOR 1: 132 sq. ft. FLOOR 2: 555 sq. ft.
FLOOR 3: 671 sq. ft. FLOOR 4: 728 sq. ft.
EXCLUDED AREAS: , UNFINISHED BASEMENT: 522 sq. ft.
GARAGE: 430 sq. ft. PATIO: 177 sq. ft.
PORCH: 112 sq. ft.
TOTAL: 2085 sq. ft.
MEASUREMENTS CALCULATED BY V1Photos.COM ARE DEEMED HIGHLY RELIABLE BUT NOT GUARANTEED.



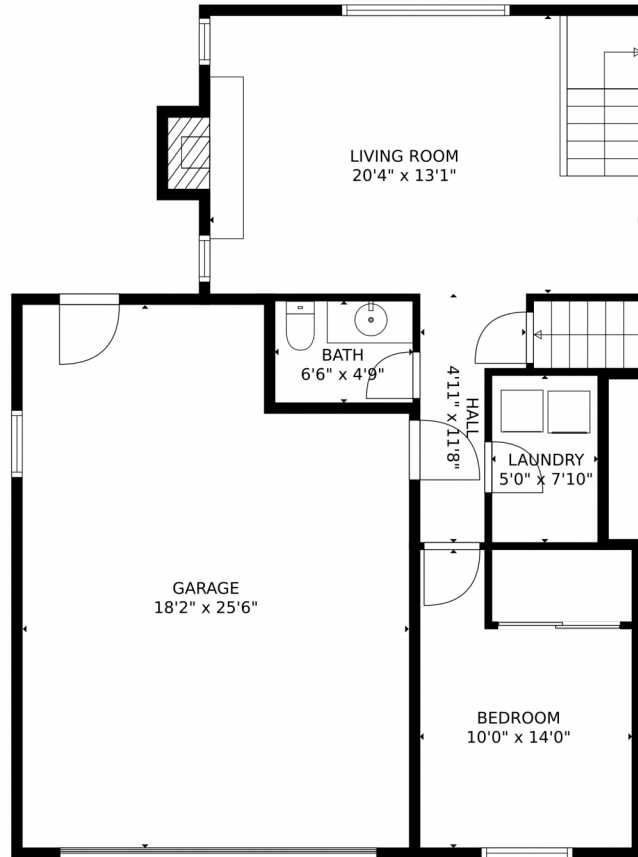
Disclaimer: Sizes and Dimensions are Approximate, Actual May Vary.



K.C. Golfinopoulos
720-750-2269
mountainrealtykc@gmail.com
<https://mountainrealtycolorado.com/>



12253 S Kuehster Road, Littleton, CO 80127 – Lower Floor



GROSS INTERNAL AREA
FLOOR 1: 132 sq. ft. FLOOR 2: 555 sq. ft.
FLOOR 3: 671 sq. ft. FLOOR 4: 728 sq. ft.
EXCLUDED AREAS: , UNFINISHED BASEMENT: 522 sq. ft.
GARAGE: 430 sq. ft. PATIO: 177 sq. ft.
PORCH: 112 sq. ft.
TOTAL: 2085 sq. ft.
MEASUREMENTS CALCULATED BY V1Photos.COM ARE DEEMED HIGHLY RELIABLE BUT NOT GUARANTEED.



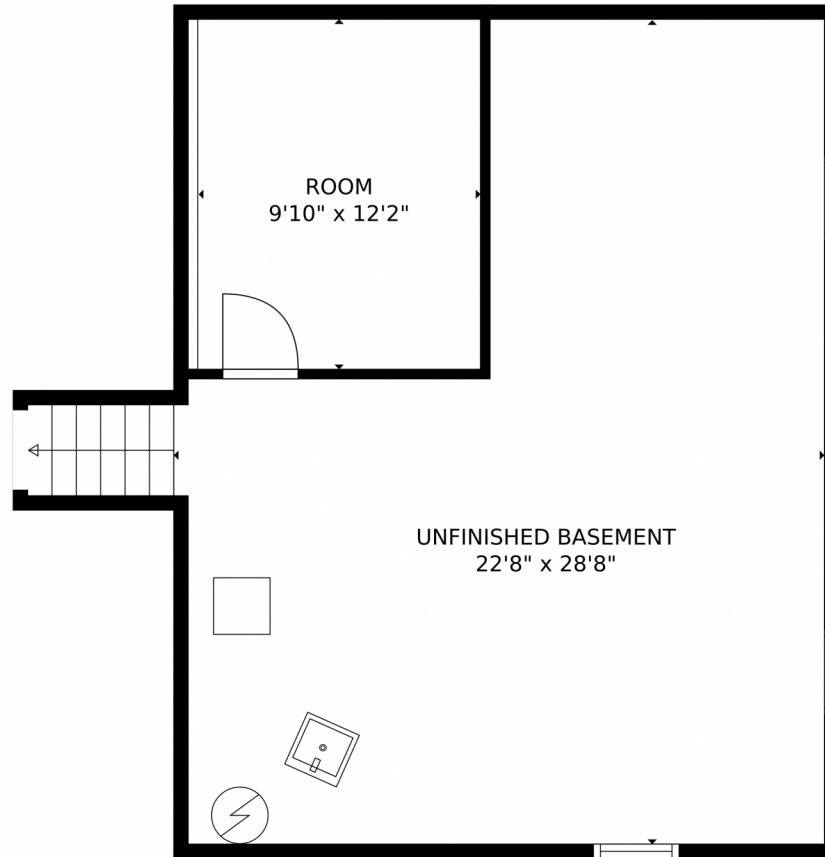
Disclaimer: Sizes and Dimensions are Approximate, Actual May Vary.



K.C. Golfinopoulos
720-750-2269
mountainrealtykc@gmail.com
<https://mountainrealtycolorado.com/>



12253 S Kuehster Road, Littleton, CO 80127 – Basement



GROSS INTERNAL AREA
FLOOR 1: 132 sq. ft. FLOOR 2: 555 sq. ft.
FLOOR 3: 671 sq. ft. FLOOR 4: 728 sq. ft.
EXCLUDED AREAS: , UNFINISHED BASEMENT: 522 sq. ft.
GARAGE: 430 sq. ft. PATIO: 177 sq. ft.
PORCH: 112 sq. ft.
TOTAL: 2085 sq. ft.

MEASUREMENTS CALCULATED BY V1Photos.COM ARE DEEMED HIGHLY RELIABLE BUT NOT GUARANTEED.



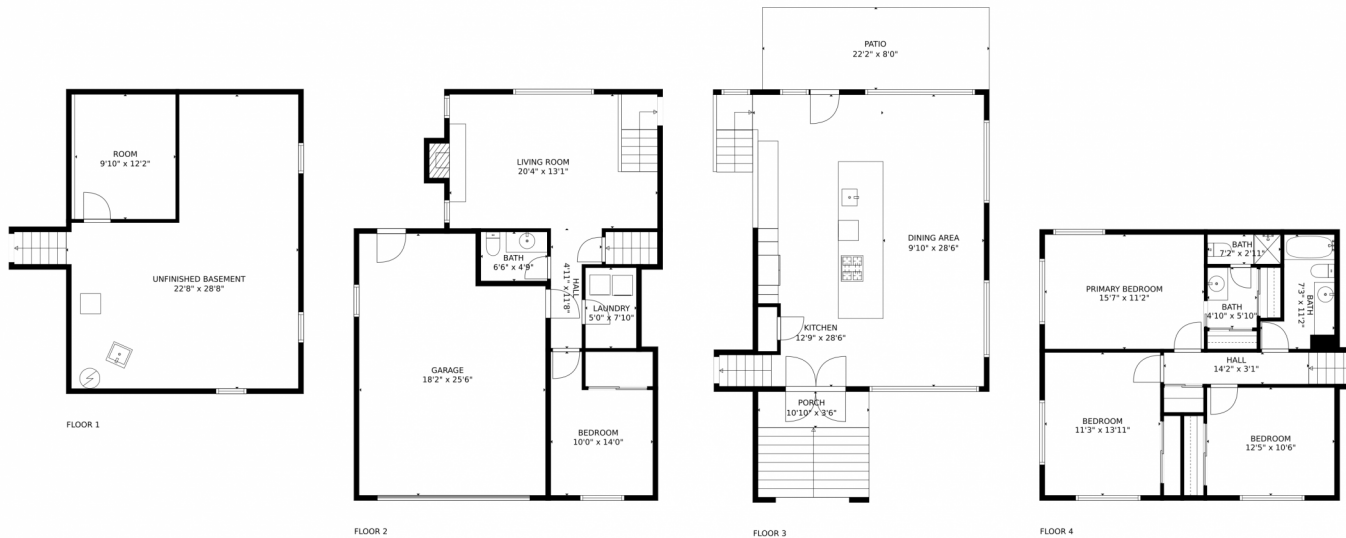
Disclaimer: Sizes and Dimensions are Approximate, Actual May Vary.



K.C. Golfopoulos
720-750-2269
mountainrealtykc@gmail.com
<https://mountainrealtycolorado.com/>



12253 S Kuehster Road, Littleton, CO 80127 – All Floors



GROSS INTERNAL AREA
 FLOOR 1: 132 sq. ft. FLOOR 2: 555 sq. ft.
 FLOOR 3: 671 sq. ft. FLOOR 4: 728 sq. ft.
 EXCLUDED AREAS: UNFINISHED BASEMENT: 522 sq. ft.
 GARAGE: 430 sq. ft. PATIO: 177 sq. ft.
 PORCH: 112 sq. ft.
 TOTAL: 2085 sq. ft.

MEASUREMENTS CALCULATED BY V1Photos.COM ARE DEEMED HIGHLY RELIABLE BUT NOT GUARANTEED.



Disclaimer: Sizes and Dimensions are Approximate, Actual May Vary.



K.C. Golfinopoulos
 720-750-2269
 mountainrealtykc@gmail.com
<https://mountainrealtycolorado.com/>



Scan code
 for more
 property
 details

