




 Single Family

 2276 SQFT

 3 Beds

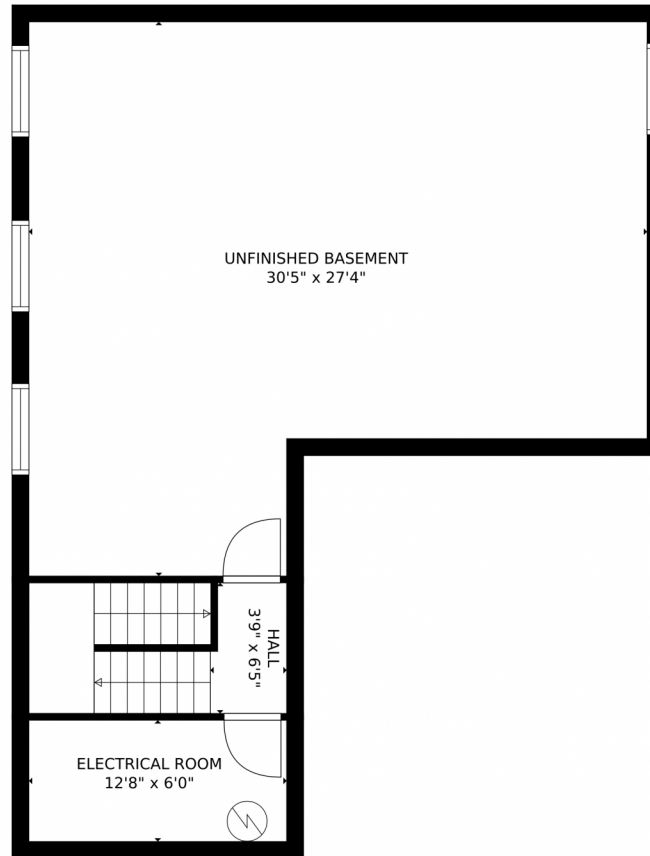
 2/1 Baths



Taylor Haas
303-665-7368
taylorh@coloradorpm.com
<https://www.coloradorpm.com/available-rental-properties-denver>



8547 Briar Bush Ln, Colorado Springs, CO 80927 — Lower Level



GROSS INTERNAL AREA
FLOOR 1: 166 sq. ft, FLOOR 2: 965 sq. ft
FLOOR 3: 1153 sq. ft, EXCLUDED AREAS:
UNFINISHED BASEMENT: 711 sq. ft, GARAGE: 313 sq. ft
PATIO: 303 sq. ft, PORCH: 84 sq. ft
TOTAL: 2284 sq. ft
MEASUREMENTS CALCULATED BY V1Photos.com ARE DEEMED HIGHLY RELIABLE BUT NOT GUARANTEED.



Disclaimer: Sizes and Dimensions are Approximate, Actual May Vary.



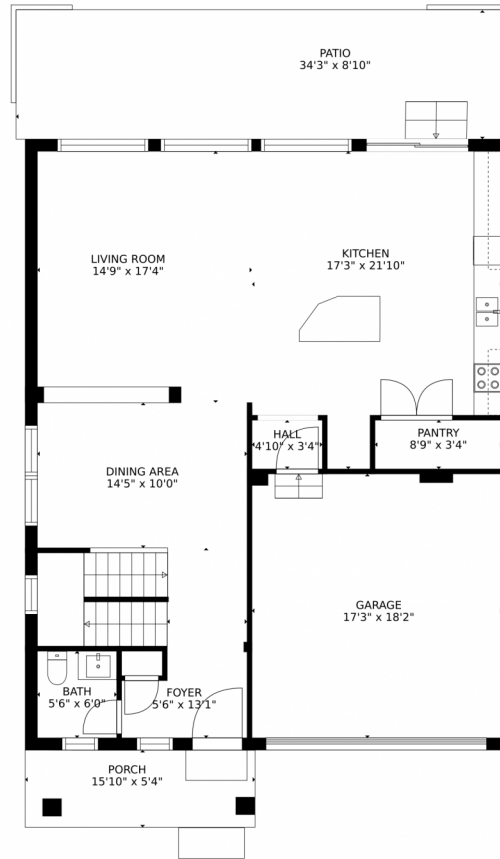
Taylor Haas
303-665-7368
taylorh@coloradorpm.com
<https://www.coloradorpm.com/available-rental-properties-denver>



Scan code
for more
property
details



8547 Briar Bush Ln, Colorado Springs, CO 80927 – Main Level



GROSS INTERNAL AREA
FLOOR 1: 166 sq. ft, FLOOR 2: 965 sq. ft
FLOOR 3: 1153 sq. ft, EXCLUDED AREAS:
UNFINISHED BASEMENT: 711 sq. ft, GARAGE: 313 sq. ft
PATIO: 303 sq. ft, PORCH: 84 sq. ft
TOTAL: 2284 sq. ft
MEASUREMENTS CALCULATED BY V1Photos.COM ARE DEEMED HIGHLY RELIABLE BUT NOT GUARANTEED.



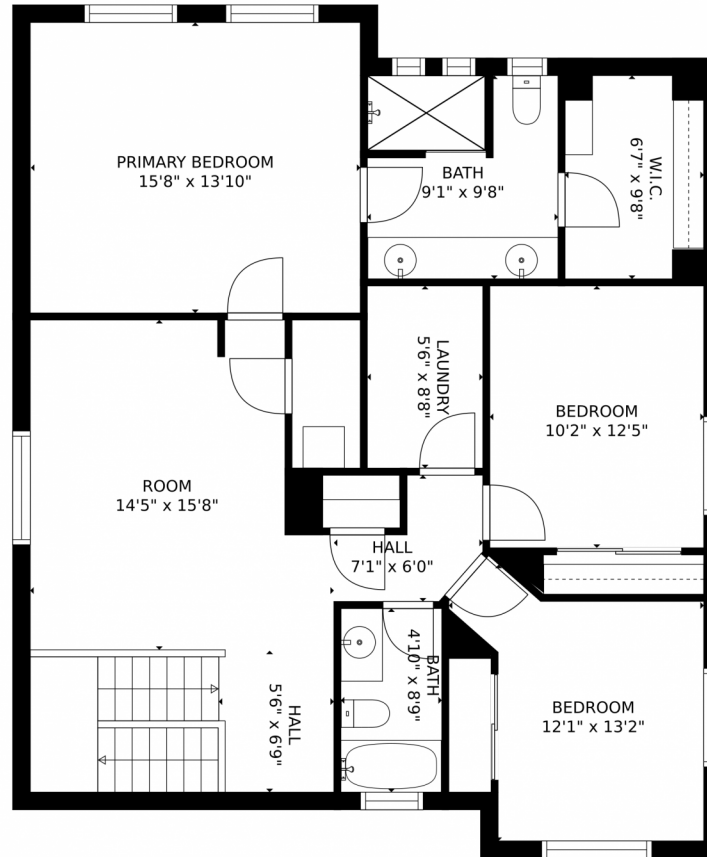
Disclaimer: Sizes and Dimensions are Approximate, Actual May Vary.



Taylor Haas
303-665-7368
taylorh@coloradorpm.com
<https://www.coloradorpm.com/available-rental-properties-denver>



8547 Briar Bush Ln, Colorado Springs, CO 80927 – Upper Level



GROSS INTERNAL AREA
FLOOR 1: 166 sq. ft, FLOOR 2: 965 sq. ft
FLOOR 3: 1153 sq. ft, EXCLUDED AREAS:
UNFINISHED BASEMENT: 711 sq. ft, GARAGE: 313 sq. ft
PATIO: 303 sq. ft, PORCH: 84 sq. ft
TOTAL: 2284 sq. ft
MEASUREMENTS CALCULATED BY V1Photos.COM ARE DEEMED HIGHLY RELIABLE BUT NOT GUARANTEED.



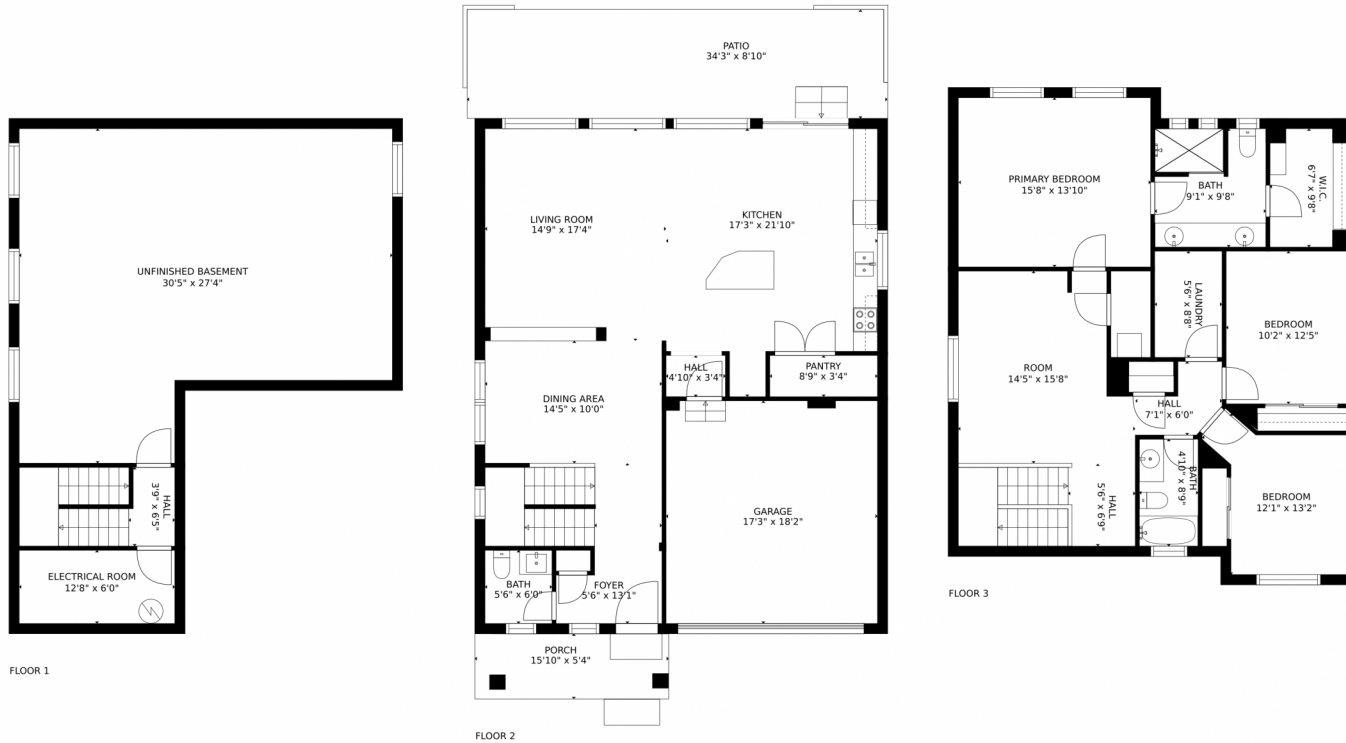
Disclaimer: Sizes and Dimensions are Approximate, Actual May Vary.



Taylor Haas
303-665-7368
taylorh@coloradorpm.com
<https://www.coloradorpm.com/available-rental-properties-denver>



8547 Briar Bush Ln, Colorado Springs, CO 80927 – All Levels



GROSS INTERNAL AREA
 FLOOR 1: 166 sq. ft, FLOOR 2: 965 sq. ft
 FLOOR 3: 1153 sq. ft, EXCLUDED AREAS:
 UNFINISHED BASEMENT: 711 sq. ft, GARAGE: 313 sq. ft
 PATIO: 303 sq. ft, PORCH: 84 sq. ft
 TOTAL: 2284 sq. ft
 MEASUREMENTS CALCULATED BY V1Photos.com ARE DEEMED HIGHLY RELIABLE BUT NOT GUARANTEED.



Disclaimer: Sizes and Dimensions are Approximate, Actual May Vary.



Taylor Haas
 303-665-7368
 taylorh@coloradorpm.com
<https://www.coloradorpm.com/available-rental-properties-denver>



Scan code
 for more
 property
 details

