



14216 West 90th Place  
Arvada, CO 80005  
COMMUNITY: Whisper Creek



Single Family



3378 SQFT



5 Beds



3/1 Baths



3 Car



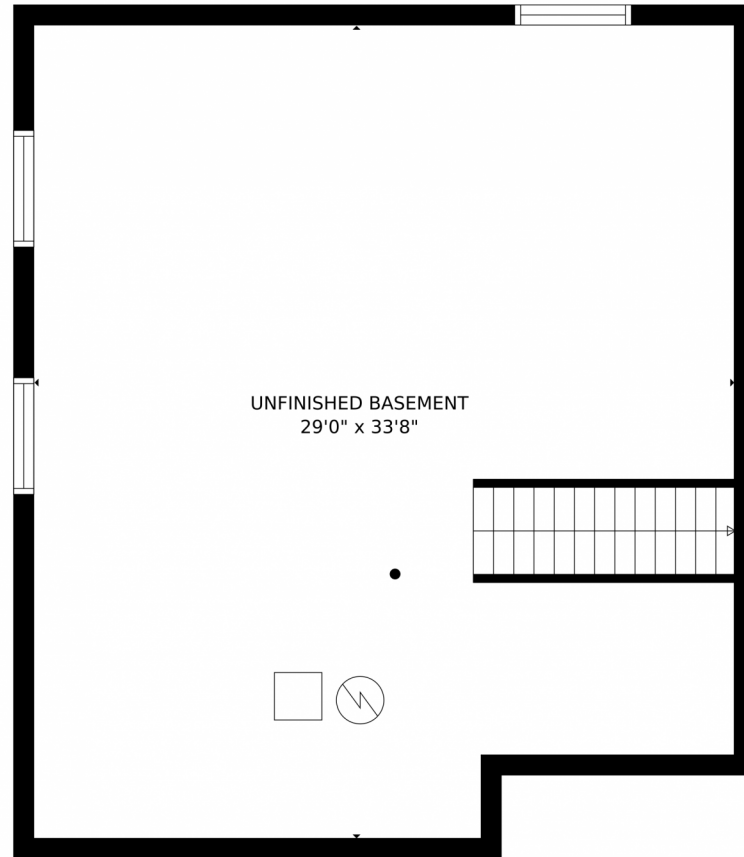
**Andrea Price**  
303-956-9691  
andrea@pricecohomes.com



Scan code  
for more  
property  
details



14216 West 90th Place, Arvada, CO 80005 – Lower Level



GROSS INTERNAL AREA  
FLOOR 1: 7 sq. ft, FLOOR 2: 1957 sq. ft  
FLOOR 3: 1335 sq. ft, EXCLUDED AREAS:  
UNFINISHED BASEMENT: 936 sq. ft, GARAGE: 724 sq. ft  
PATIO: 361 sq. ft, PORCH: 72 sq. ft  
TOTAL: 3300 sq. ft  
MEASUREMENTS CALCULATED BY V1Photos.com ARE DEEMED HIGHLY RELIABLE BUT NOT GUARANTEED.

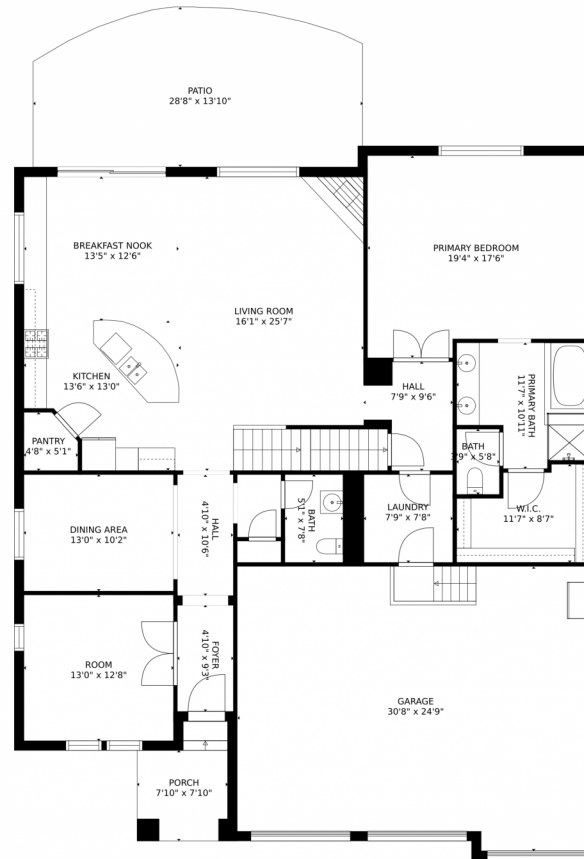
Disclaimer: Sizes and Dimensions are Approximate, Actual May Vary.



**Andrea Price**  
303-956-9691  
andrea@pricecohomes.com



# 14216 West 90th Place, Arvada, CO 80005 – Main Level



GROSS INTERNAL AREA  
FLOOR 1: 7 sq. ft, FLOOR 2: 1957 sq. ft  
FLOOR 3: 1335 sq. ft, EXCLUDED AREAS:  
UNFINISHED BASEMENT: 936 sq. ft, GARAGE: 724 sq. ft  
PATIO: 361 sq. ft, PORCH: 72 sq. ft  
TOTAL: 3300 sq. ft  
MEASUREMENTS CALCULATED BY V1Photos.com ARE DEEMED HIGHLY RELIABLE BUT NOT GUARANTEED.



Disclaimer: Sizes and Dimensions are Approximate, Actual May Vary.



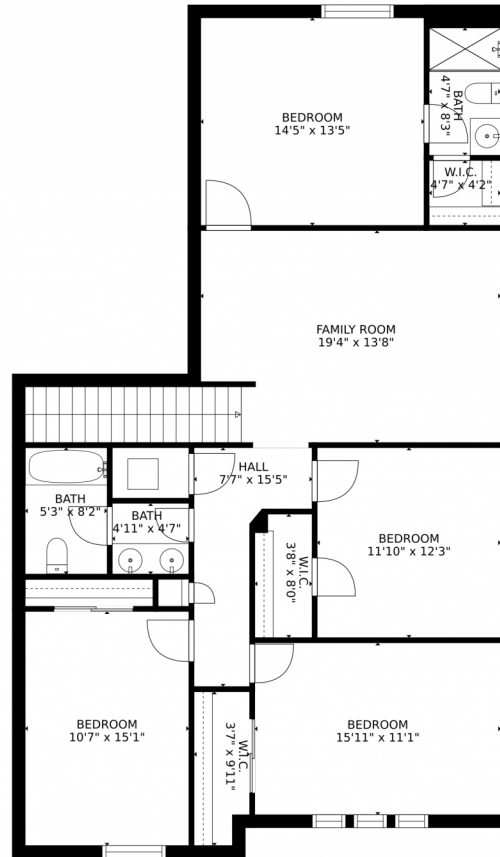
**Andrea Price**  
303-956-9691  
andrea@pricecohomes.com



Scan code  
for more  
property  
details



# 14216 West 90th Place, Arvada, CO 80005 – Upper Level



GROSS INTERNAL AREA  
FLOOR 1: 7 sq. ft, FLOOR 2: 1957 sq. ft  
FLOOR 3: 1335 sq. ft, EXCLUDED AREAS:  
UNFINISHED BASEMENT: 936 sq. ft, GARAGE: 724 sq. ft  
PATIO: 361 sq. ft, PORCH: 72 sq. ft  
TOTAL: 3300 sq. ft  
MEASUREMENTS CALCULATED BY V1Photos.com ARE DEEMED HIGHLY RELIABLE BUT NOT GUARANTEED.



Disclaimer: Sizes and Dimensions are Approximate, Actual May Vary.



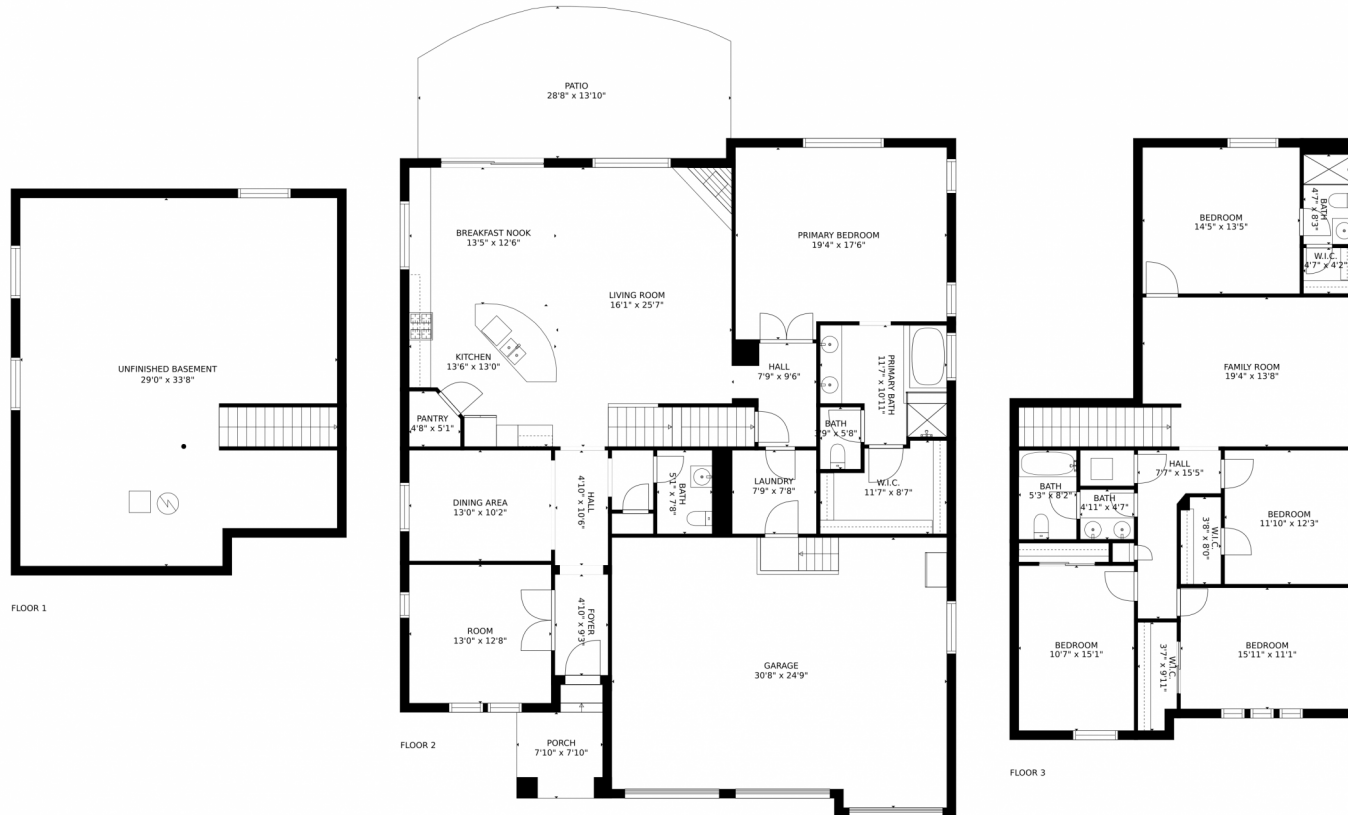
**Andrea Price**  
303-956-9691  
andrea@pricecohomes.com



Scan code for more property details



# 14216 West 90th Place, Arvada, CO 80005 – All Levels



GROSS INTERNAL AREA  
FLOOR 1: 7 sq. ft, FLOOR 2: 1957 sq. ft  
FLOOR 3: 1335 sq. ft, EXCLUDED AREAS:  
UNFINISHED BASEMENT: 936 sq. ft, GARAGE: 724 sq. ft  
PATIO: 361 sq. ft, PORCH: 72 sq. ft  
TOTAL: 3300 sq. ft  
MEASUREMENTS CALCULATED BY V1Photos.COM ARE DEEMED HIGHLY RELIABLE BUT NOT GUARANTEED.



Disclaimer: Sizes and Dimensions are Approximate, Actual May Vary.



**Andrea Price**  
303-956-9691  
andrea@pricecohomes.com



Scan code  
for more  
property  
details

