









11770 Leavenworth Drive, Conifer, CO 80433 - All Levels



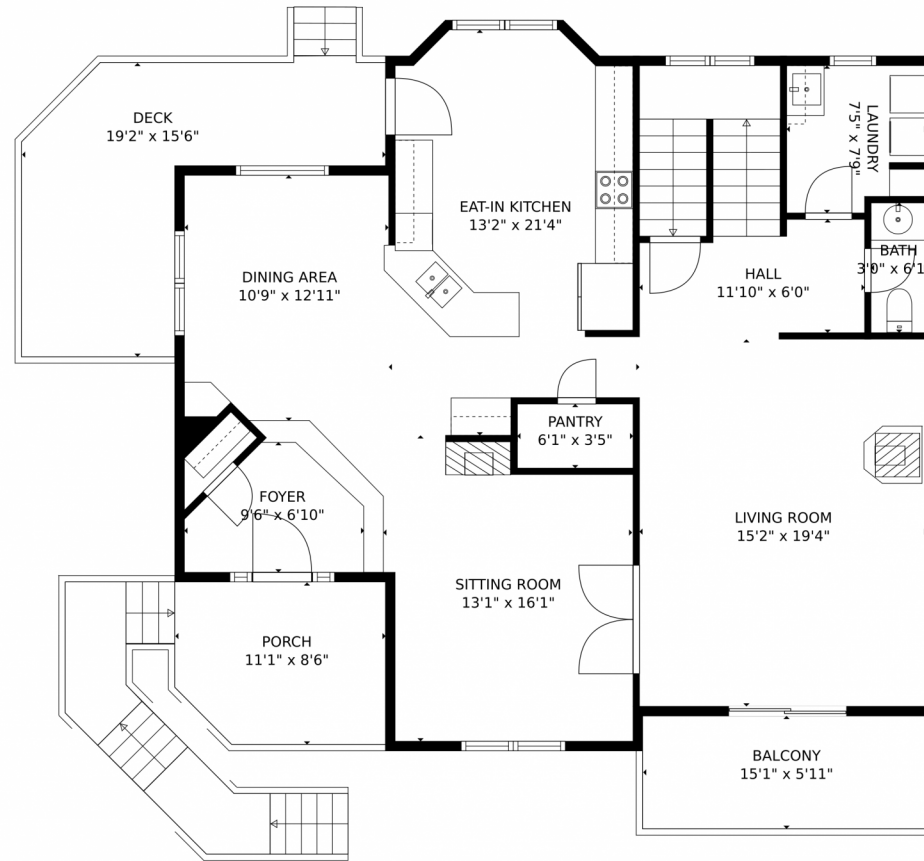
 Single Family  2824 SQFT  3 Beds  2/1 Baths  2 Car  0.38 Acre



Val Sherman
817-454-6739
vfsherman@gmail.com



11770 Leavenworth Drive, Conifer, CO 80433 – Main Level



GROSS INTERNAL AREA
FLOOR 1: 535 sq. ft., FLOOR 2: 1214 sq. ft.
FLOOR 3: 1045 sq. ft., EXCLUDED AREAS:
GARAGE: 590 sq. ft., BALCONY: 90 sq. ft.
DECK: 178 sq. ft., PORCH: 90 sq. ft.
TOTAL: 2794 sq. ft.
MEASUREMENTS CALCULATED BY V1Photos.com ARE DEEMED HIGHLY RELIABLE BUT NOT GUARANTEED.



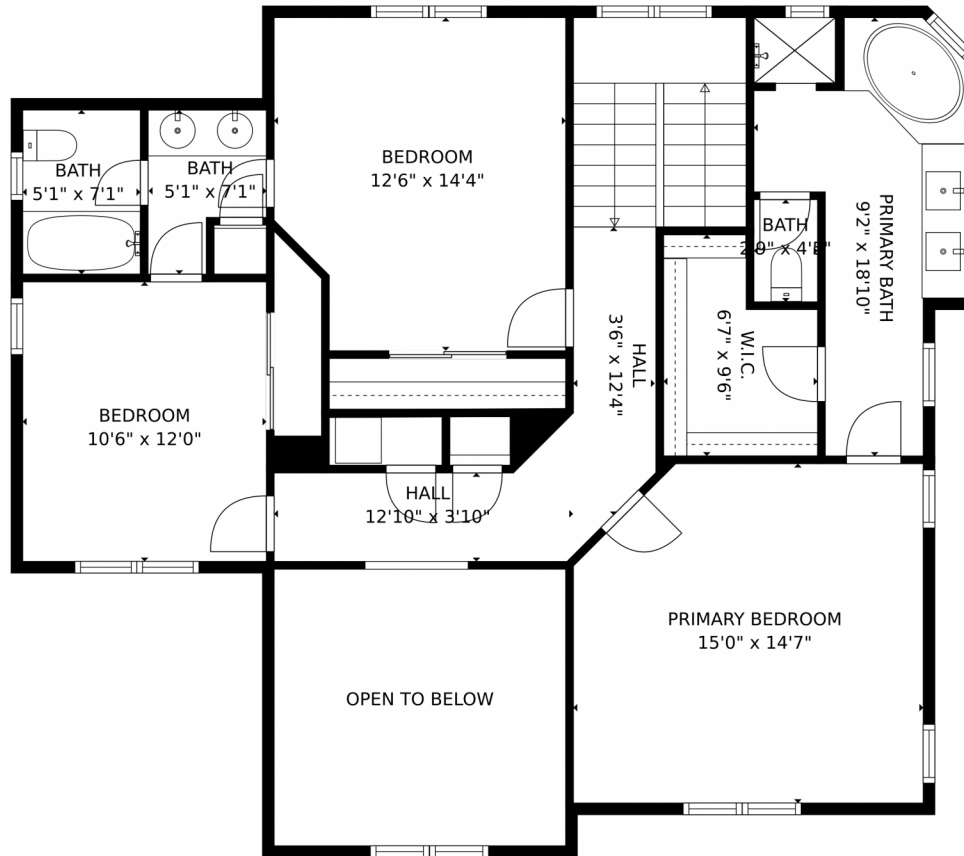
Disclaimer: Sizes and Dimensions are Approximate, Actual May Vary.



Val Sherman
817-454-6739
vfsherman@gmail.com



11770 Leavenworth Drive, Conifer, CO 80433 – Upper Level



GROSS INTERNAL AREA
FLOOR 1: 535 sq. ft., FLOOR 2: 1214 sq. ft.
FLOOR 3: 1045 sq. ft., EXCLUDED AREAS:
GARAGE: 590 sq. ft., BALCONY: 90 sq. ft.
DECK: 178 sq. ft., PORCH: 90 sq. ft.
TOTAL: 2794 sq. ft.
MEASUREMENTS CALCULATED BY V1Photos.COM ARE DEEMED HIGHLY RELIABLE BUT NOT GUARANTEED.

Disclaimer: Sizes and Dimensions are Approximate, Actual May Vary.



Val Sherman
817-454-6739
vfsherman@gmail.com



11770 Leavenworth Drive, Conifer, CO 80433 – Lower Level



GROSS INTERNAL AREA
FLOOR 1: 535 sq. ft., FLOOR 2: 1214 sq. ft.
FLOOR 3: 1045 sq. ft., EXCLUDED AREAS:
GARAGE: 590 sq. ft., BALCONY: 90 sq. ft.
DECK: 178 sq. ft., PORCH: 90 sq. ft.
TOTAL: 2794 sq. ft.

MEASUREMENTS CALCULATED BY V1Photos.COM ARE DEEMED HIGHLY RELIABLE BUT NOT GUARANTEED.



Disclaimer: Sizes and Dimensions are Approximate, Actual May Vary.



Val Sherman
817-454-6739
vfsherman@gmail.com

