

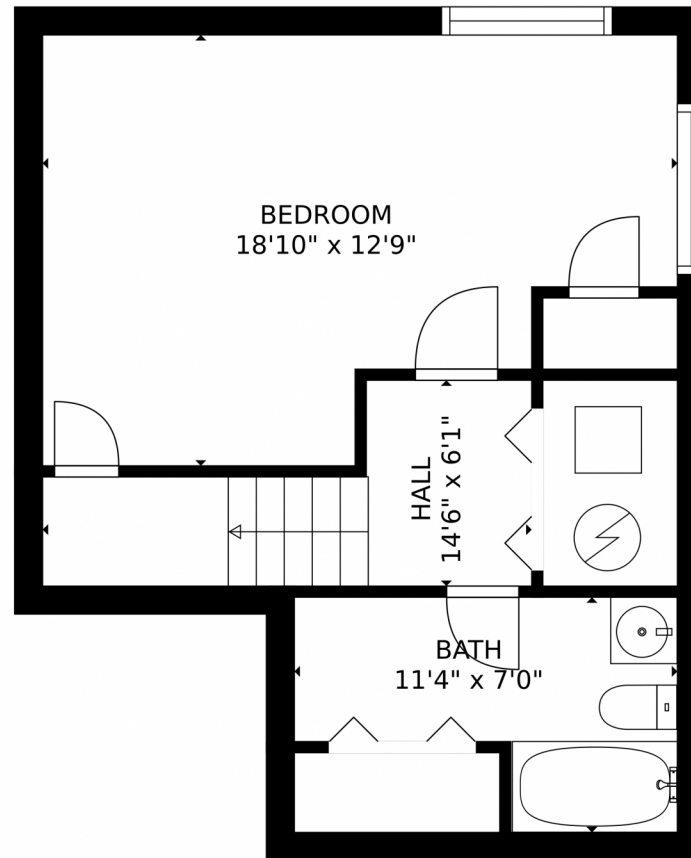
 Single Family  2164 SQFT



Jordan Kermes
952-956-2958
jordan@kermesllc.com



3247 Heather Glen Drive, Colorado Springs, CO 80922 – Lower Level



GROSS INTERNAL AREA
FLOOR 1: 391 sq. ft. FLOOR 2: 734 sq. ft.
FLOOR 3: 903 sq. ft. EXCLUDED AREAS:
GARAGE: 330 sq. ft.
TOTAL: 2027 sq. ft.

MEASUREMENTS CALCULATED BY V1Photos.COM ARE DEEMED HIGHLY RELIABLE BUT NOT GUARANTEED.



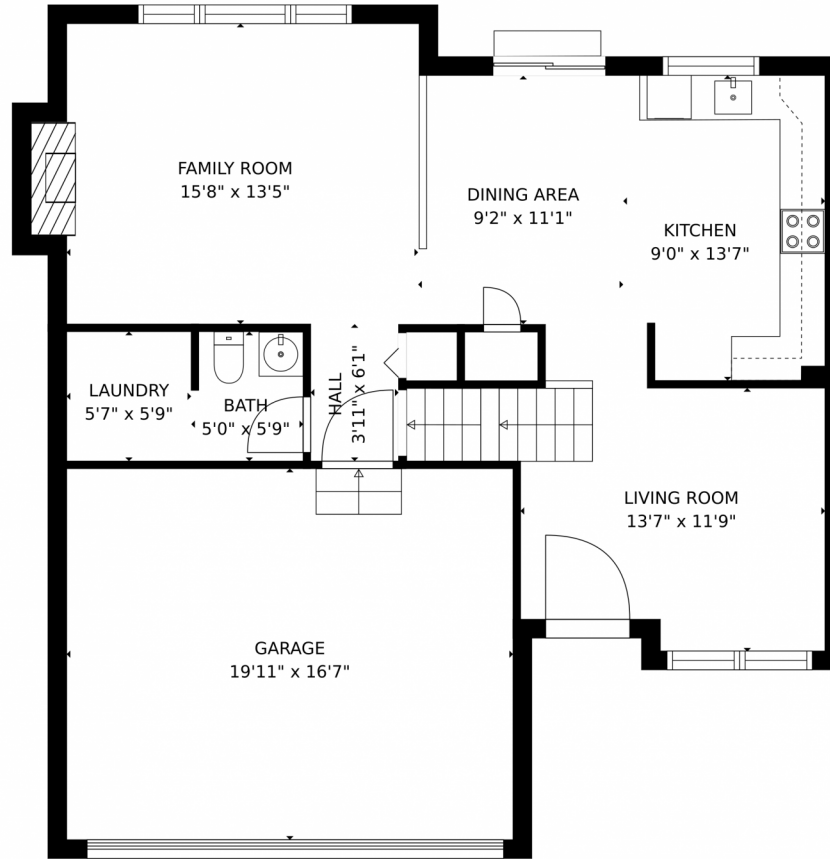
Disclaimer: Sizes and Dimensions are Approximate, Actual May Vary.



Jordan Kermes
952-956-2958
jordan@kermesllc.com



3247 Heather Glen Drive, Colorado Springs, CO 80922 – Main Level



GROSS INTERNAL AREA
FLOOR 1: 391 sq. ft. FLOOR 2: 734 sq. ft.
FLOOR 3: 903 sq. ft. EXCLUDED AREAS:
GARAGE: 330 sq. ft.
TOTAL: 2027 sq. ft.

MEASUREMENTS CALCULATED BY V1Photos.COM ARE DEEMED HIGHLY RELIABLE BUT NOT GUARANTEED.



Disclaimer: Sizes and Dimensions are Approximate, Actual May Vary.



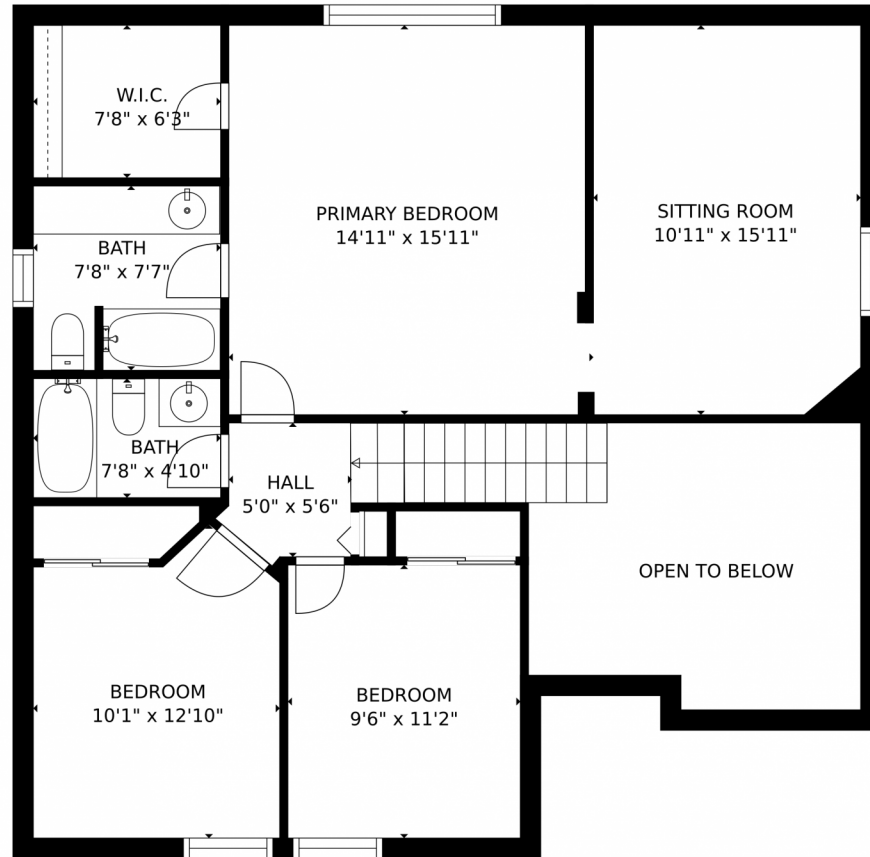
Jordan Kermes
952-956-2958
jordan@kermesllc.com



Scan code
for more
property
details



3247 Heather Glen Drive, Colorado Springs, CO 80922 – Upper Level



GROSS INTERNAL AREA
FLOOR 1: 391 sq. ft. FLOOR 2: 734 sq. ft.
FLOOR 3: 903 sq. ft. EXCLUDED AREAS:
GARAGE: 330 sq. ft.
TOTAL: 2027 sq. ft.

MEASUREMENTS CALCULATED BY V1Photos.com ARE DEEMED HIGHLY RELIABLE BUT NOT GUARANTEED.



Disclaimer: Sizes and Dimensions are Approximate, Actual May Vary.



Jordan Kermes
952-956-2958
jordan@kermesllc.com



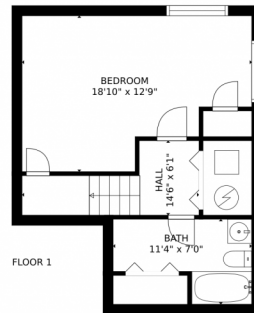
3247 Heather Glen Drive, Colorado Springs, CO 80922 – All Levels



FLOOR 2



FLOOR 3



FLOOR 1

GROSS INTERNAL AREA
FLOOR 1: 391 sq. ft. FLOOR 2: 734 sq. ft.
FLOOR 3: 903 sq. ft. EXCLUDED AREAS:
GARAGE: 330 sq. ft.
TOTAL: 2027 sq. ft.

MEASUREMENTS CALCULATED BY V1Photos.com ARE DEEMED HIGHLY RELIABLE BUT NOT GUARANTEED.



Disclaimer: Sizes and Dimensions are Approximate, Actual May Vary.



Jordan Kermes
952-956-2958
jordan@kermesllc.com

