



Single Family



5104 SQFT



5 Beds



4/1 Baths



3 Car



0.69 Acre

PROPERTY DETAILS

Welcome to this beautiful main-level living home ideally located in central Evergreen. This stunning property is tucked away at the end of a cul-de-sac and boasts lovely views, privacy, and borders open space on two sides. Step out of your home right into Elk Meadow Open Space park! Nature abounds, yet you are in central Evergreen on public utilities within a few minutes of all amenities. The charming front porch leading to the grand entrance sets the tone for the luxurious living space ahead. Upon entry, you will be greeted by the great room with two-story windows that offer picturesque views of the surrounding open space and a lovely stone fireplace that provides warmth and ambiance in the colder months. The south-facing composite deck offers an exceptional outdoor living experience and perfect for hosting gatherings. The remodeled 2019 kitchen comes equipped with top-of-the-line stainless steel appliances, granite counters, hardwood floors, breakfast bar, pantry, ample cabinetry, and a sunny breakfast area. The main level primary suite features tall ceilings, a luxurious bathroom with dual vanities, a soaking tub, and a large walk-in closet. All this is just steps from the laundry room and 3-car garage too. The upper level of this impressive home, once a part of Parade of Homes, features two vaulted bedrooms connected to a Jack & Jill bathroom with walk-in closets and also a bedroom with an en-suite bathroom. The lower level features a spacious recreation



Pandora & John Erlandson
 303-888-6298
 pandora@pandorajohnproperties.com
<https://www.pandorajohnproperties.com>



Scan code
 for more
 property
 details



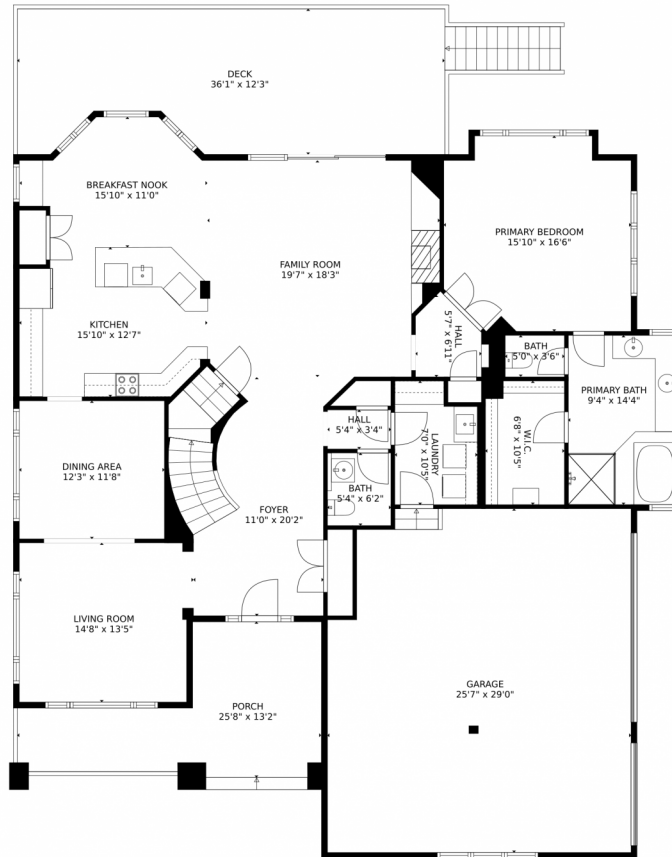
room and media area, which accesses the large patio. The rest of the lower level is comprised of a ¾ bath, bedroom, and a great workshop/storage and an additional huge storage/utility room. You will love the 3-car garage, extra parking pullouts, and flat paved driveway. There is no HOA. This lovely home with main level living offers a rare location on open space and trails, and is close to everything. It's ideal for those who love the outdoors and quick access to convenient amenities!



Pandora & John Erlandson
303-888-6298
pandora@pandorajohnproperties.com
<https://www.pandorajohnproperties.com>



31494 Blackfeather Trail, Evergreen, CO 80439 – Main Level



GROSS INTERNAL AREA
FLOOR 1: 1892 sq. ft. FLOOR 2: 1983 sq. ft.
FLOOR 3: 1067 sq. ft. EXCLUDED AREAS:
PATIO: 601 sq. ft. GARAGE: 715 sq. ft.
DECK: 409 sq. ft. PORCH: 218 sq. ft.
TOTAL: 4942 sq. ft.

MEASUREMENTS CALCULATED BY V1Photos.com ARE DEEMED HIGHLY RELIABLE BUT NOT GUARANTEED.



Disclaimer: Sizes and Dimensions are Approximate, Actual May Vary.



Pandora & John Erlandson

303-888-6298

pandora@pandorajohnproperties.com

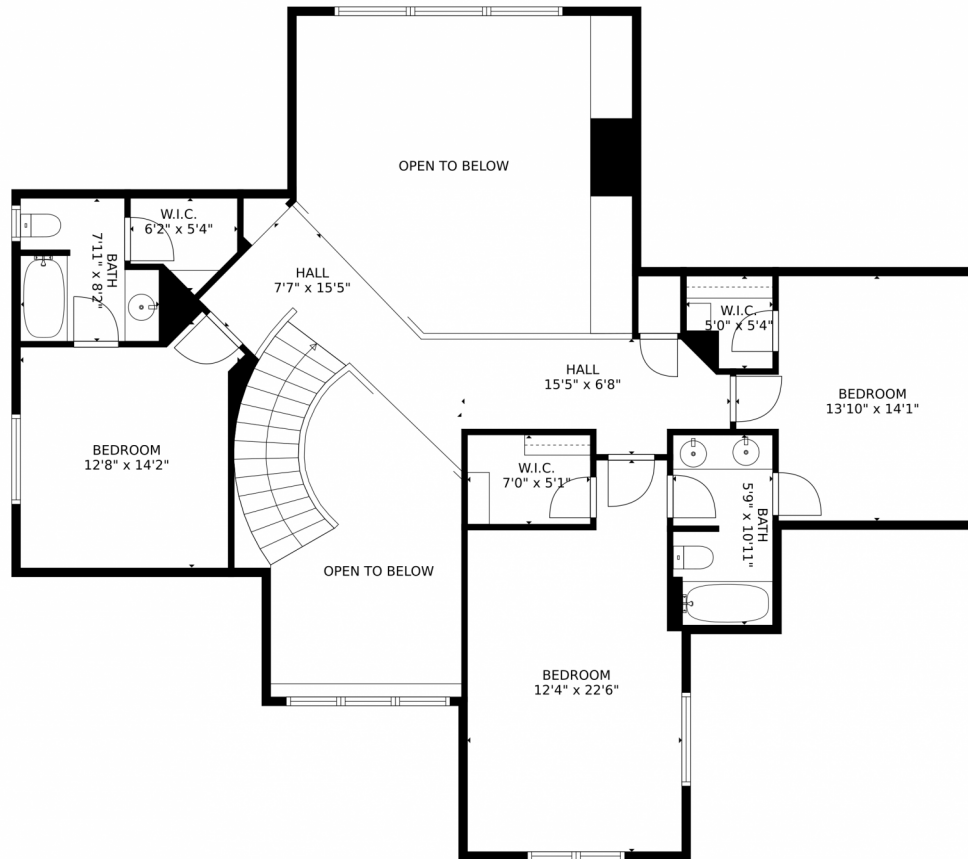
<https://www.pandorajohnproperties.com>



Scan code
for more
property
details



31494 Blackfeather Trail, Evergreen, CO 80439 – 2nd Level



GROSS INTERNAL AREA
FLOOR 1: 1892 sq. ft., FLOOR 2: 1983 sq. ft.
FLOOR 3: 1067 sq. ft., EXCLUDED AREAS:
PATIO: 601 sq. ft., GARAGE: 715 sq. ft.
DECK: 409 sq. ft., PORCH: 218 sq. ft.
TOTAL: 4942 sq. ft.
MEASUREMENTS CALCULATED BY V1Photos.com ARE DEEMED HIGHLY RELIABLE BUT NOT GUARANTEED.



Disclaimer: Sizes and Dimensions are Approximate, Actual May Vary.



Pandora & John Erlandson

303-888-6298

pandora@pandorajohnproperties.com

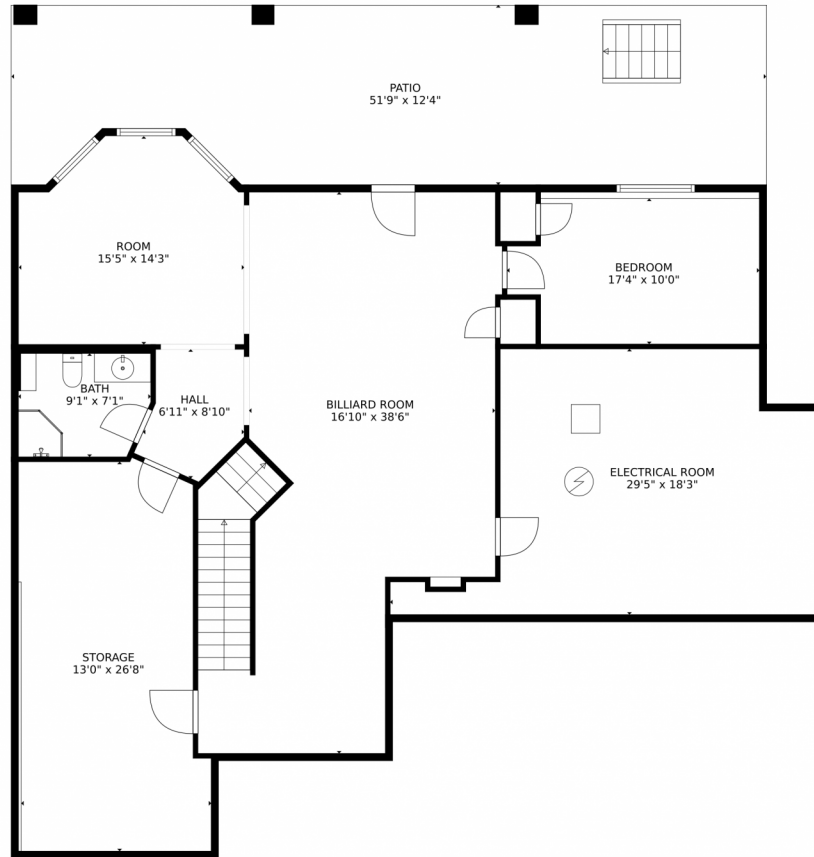
<https://www.pandorajohnproperties.com>



Scan code
for more
property
details



31494 Blackfeather Trail, Evergreen, CO 80439 – Lower Level



GROSS INTERNAL AREA
FLOOR 1: 1892 sq. ft. FLOOR 2: 1983 sq. ft.
FLOOR 3: 1067 sq. ft. EXCLUDED AREAS:
PATIO: 601 sq. ft. GARAGE: 715 sq. ft.
DECK: 409 sq. ft. PORCH: 218 sq. ft.
TOTAL: 4942 sq. ft.
MEASUREMENTS CALCULATED BY V1Photos.com ARE DEEMED HIGHLY RELIABLE BUT NOT GUARANTEED.



Disclaimer: Sizes and Dimensions are Approximate, Actual May Vary.



Pandora & John Erlandson

303-888-6298

pandora@pandorajohnproperties.com

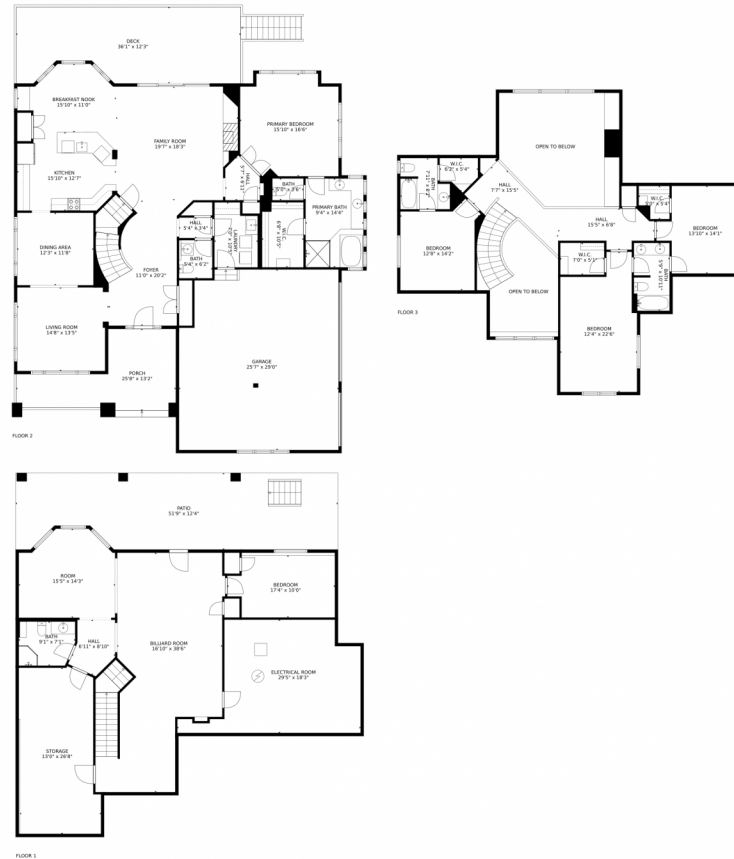
<https://www.pandorajohnproperties.com>



Scan code
for more
property
details



31494 Blackfeather Trail, Evergreen, CO 80439 — All Levels



GROSS INTERNAL AREA
FLOOR 1: 1892 sq. ft. FLOOR 2: 1983 sq. ft.
FLOOR 3: 1067 sq. ft. EXCLUDED AREAS:
PATIO: 601 sq. ft. GARAGE: 715 sq. ft.
DECK: 409 sq. ft. PORCH: 218 sq. ft.
TOTAL: 4942 sq. ft.

MEASUREMENTS CALCULATED BY V1Photos.com ARE DEEMED HIGHLY RELIABLE BUT NOT GUARANTEED.

Disclaimer: Sizes and Dimensions are Approximate, Actual May Vary.



Pandora & John Erlandson

303-888-6298

pandora@pandorajohnproperties.com

<https://www.pandorajohnproperties.com>



Scan code
for more
property
details

