

7546 old spec rd
peyton, CO 80831

MLS # 7687251
PRICE \$405,000



 Single Family  1785 SQFT

PROPERTY DETAILS

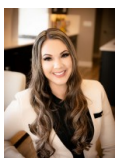
Tastefully integrating open space and convenience, with a prime location in the Woodmen Hills community, and contemporary-modern design, this gorgeous home with mature trees and beautiful landscaping is one of the area's finest listings this year, and truly offers Colorado living at its best. The main level showcases an open plan and cozy living room with a large, bright kitchen. The tri-level is ideal for a balance of both privacy and openness, which is appealing for everyone and picturesque for hosting guests. Updates and premium details are thoughtfully incorporated throughout, making the home feel refreshing and welcoming. This residence features an abundance of natural light from every direction, and is the perfect size for a starter home. Guest rooms are versatile for exercise equipment, office, or study space. The backyard with spectacular birch and aspen trees will be your new favorite year-round oasis. An unfinished basement with plenty of square feet is your opportunity to build additional living space that's just right for you with your unique style. Finally, a 2-car garage is your ideal workspace and has plenty of room for vehicles, tools, storage, and toys. You'll adore the night view of the stars, with minimal light pollution, and the spectacular view of the plains and mountains from the community's common spaces, which you can get to from the adorable paths between homes that lead to parks and playgrounds throughout the neighborhood. Come home and rest after a quick drive into Falcon for shopping and restaurants, or a short walk to Safeway for groceries. A cute



Samantha Maldonado
719-499-2157
MontlorSam@gmail.com
<https://montlorsam.findme.homes>



neighborhood with quick access to a BMX park, trails for dog walking and a dog park, a golf course, and two rec-centers make it a place you'll want to stay for a long time. Minutes from highway access, Colorado Springs, and convenient for commuters. There are legitimately very few opportunities to own a starter home as perfect as this. Don't miss it!

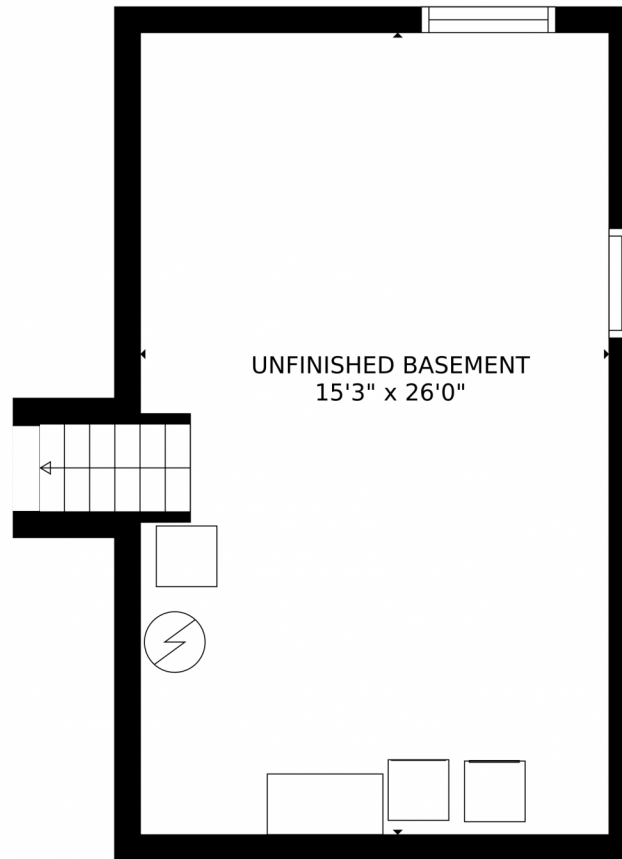


Samantha Maldonado
719-499-2157
MontlorSam@gmail.com
<https://montlorsam.findme.homes>



Scan code
for more
property
details





GROSS INTERNAL AREA
FLOOR 1: 1 sq. ft., FLOOR 2: 745 sq. ft.
FLOOR 3: 578 sq. ft., EXCLUDED AREAS:
UNFINISHED BASEMENT: 404 sq. ft., GARAGE: 334 sq. ft.
PATIO: 66 sq. ft., PORCH: 10 sq. ft.
TOTAL: 1324 sq. ft.
MEASUREMENTS CALCULATED BY V1Photos.com ARE DEEMED HIGHLY RELIABLE BUT NOT GUARANTEED.



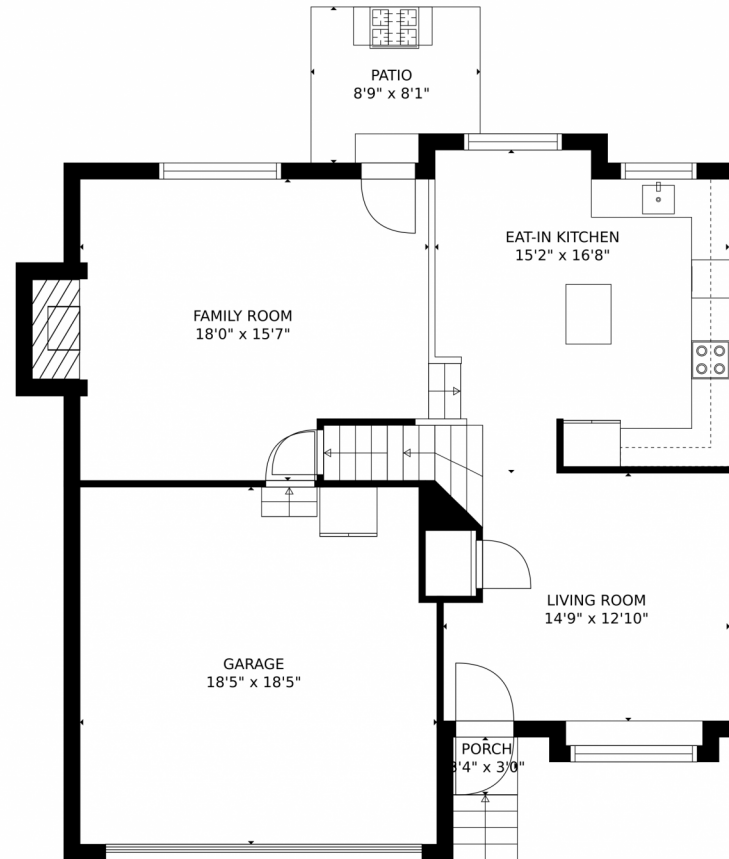
Disclaimer: Sizes and Dimensions are Approximate, Actual May Vary.



Samantha Maldonado
719-499-2157
MontlorSam@gmail.com
<https://montlorsam.findme.homes>



7546 old spec rd, peyton, CO 80831 – Main Level



GROSS INTERNAL AREA
FLOOR 1: 1 sq. ft, FLOOR 2: 745 sq. ft
FLOOR 3: 578 sq. ft, EXCLUDED AREAS:
UNFINISHED BASEMENT: 404 sq. ft, GARAGE: 334 sq. ft
PATIO: 66 sq. ft, PORCH: 10 sq. ft
TOTAL: 1324 sq. ft
MEASUREMENTS CALCULATED BY V1Photos.COM ARE DEEMED HIGHLY RELIABLE BUT NOT GUARANTEED.



Disclaimer: Sizes and Dimensions are Approximate, Actual May Vary.



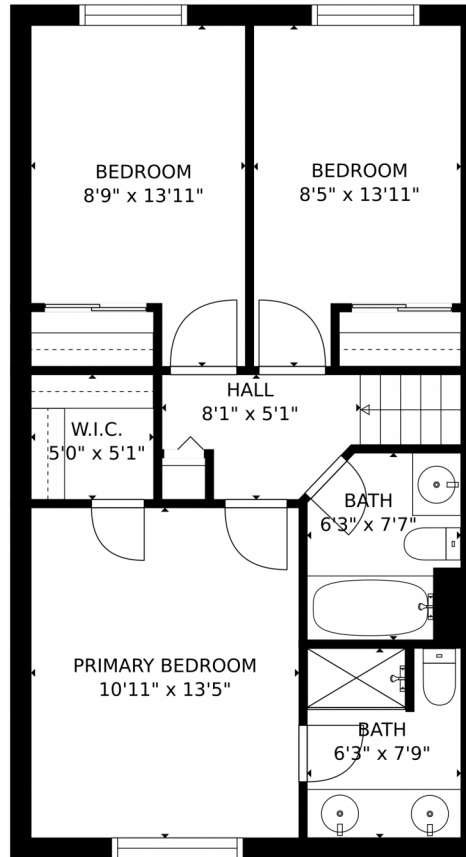
Samantha Maldonado
719-499-2157
MontlorSam@gmail.com
<https://montlorsam.findme.homes>



Scan code for more property details



7546 old spec rd, peyton, CO 80831 — Upper Level



GROSS INTERNAL AREA
FLOOR 1: 1 sq. ft., FLOOR 2: 745 sq. ft.
FLOOR 3: 578 sq. ft., EXCLUDED AREAS:
UNFINISHED BASEMENT: 404 sq. ft., GARAGE: 334 sq. ft.
PATIO: 66 sq. ft., PORCH: 10 sq. ft.
TOTAL: 1324 sq. ft.
MEASUREMENTS CALCULATED BY V1Photos.COM ARE DEEMED HIGHLY RELIABLE BUT NOT GUARANTEED.



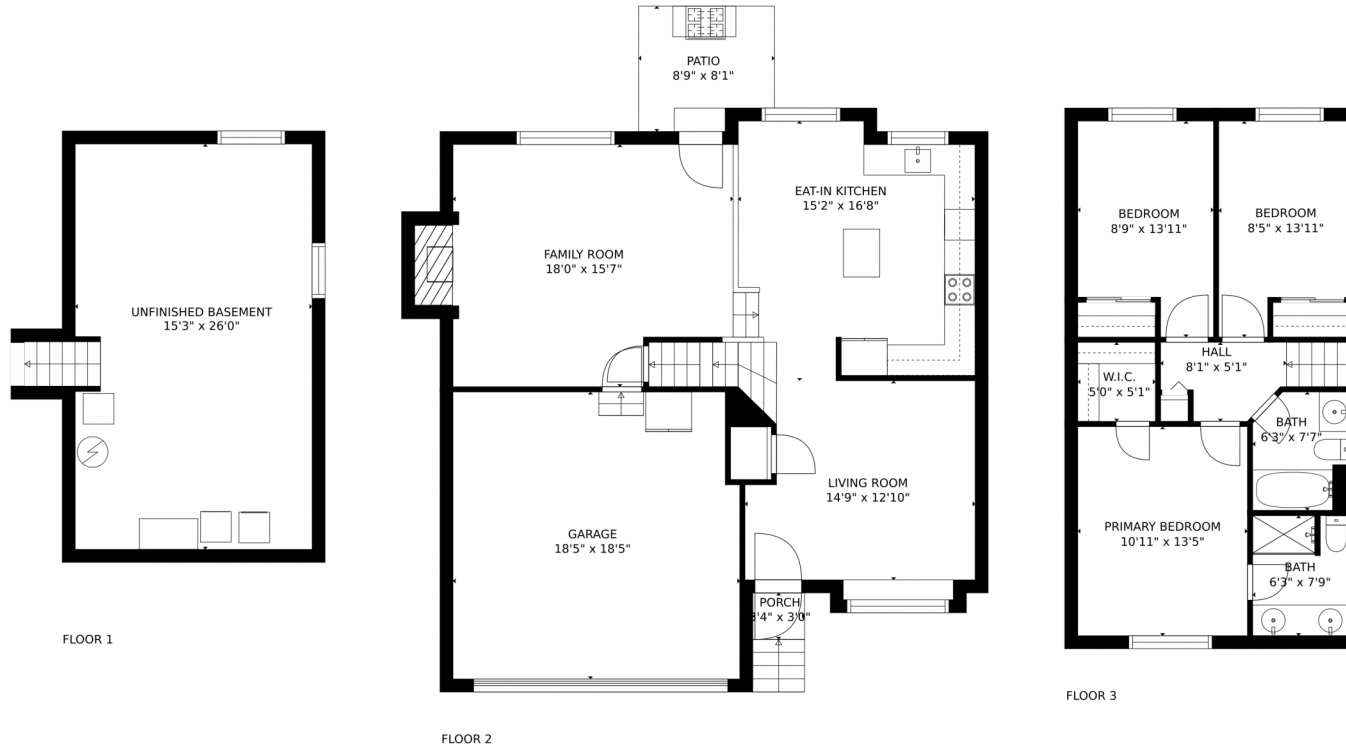
Disclaimer: Sizes and Dimensions are Approximate, Actual May Vary.



Samantha Maldonado
719-499-2157
MontlorSam@gmail.com
<https://montlorsam.findme.homes>



7546 old spec rd, peyton, CO 80831 – All Levels



GROSS INTERNAL AREA
FLOOR 1: 1 sq. ft, FLOOR 2: 745 sq. ft
FLOOR 3: 578 sq. ft, EXCLUDED AREAS:
UNFINISHED BASEMENT: 404 sq. ft, GARAGE: 334 sq. ft
PATIO: 66 sq. ft, PORCH: 10 sq. ft
TOTAL: 1324 sq. ft
MEASUREMENTS CALCULATED BY V1Photos.com ARE DEEMED HIGHLY RELIABLE BUT NOT GUARANTEED.



Disclaimer: Sizes and Dimensions are Approximate, Actual May Vary.



Samantha Maldonado
719-499-2157
MontlorSam@gmail.com
<https://montlorsam.findme.homes>

