



1520 E 9th St, Pueblo, CO 81001 - Main Level



Single Family



950 SQFT



2 Beds



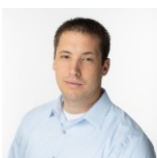
1 Baths



1 Car



0.14 Acre

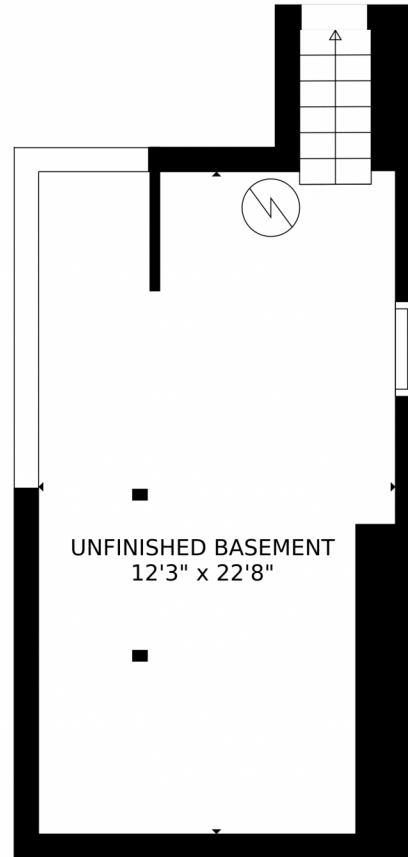


Jordan Kermes
952-956-2958
jordan@kermesllc.com



Scan code
for more
property
details





UNFINISHED BASEMENT
12'3" x 22'8"

GROSS INTERNAL AREA
FLOOR 1: 1 sq. ft, FLOOR 2: 996 sq. ft
EXCLUDED AREAS: , UNFINISHED BASEMENT: 291 sq. ft
PATIO: 20 sq. ft, PORCH: 121 sq. ft
TOTAL: 997 sq. ft
MEASUREMENTS CALCULATED BY V1Photos.com ARE DEEMED HIGHLY RELIABLE BUT NOT GUARANTEED.



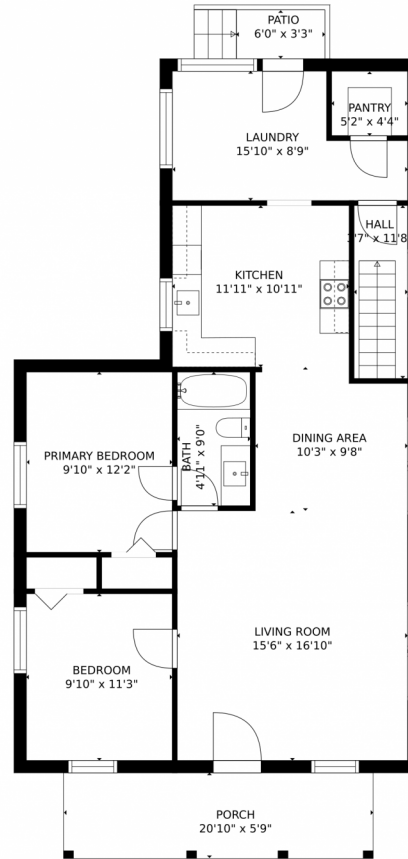
Disclaimer: Sizes and Dimensions are Approximate, Actual May Vary.



Jordan Kermes
952-956-2958
jordan@kermesllc.com



1520 E 9th St, Pueblo, CO 81001 – Main Level



GROSS INTERNAL AREA
FLOOR 1: 1 sq. ft, FLOOR 2: 996 sq. ft
EXCLUDED AREAS: UNFINISHED BASEMENT: 291 sq. ft
PATIO: 20 sq. ft, PORCH: 121 sq. ft
TOTAL: 997 sq. ft
MEASUREMENTS CALCULATED BY V1Photos.COM ARE DEEMED HIGHLY RELIABLE BUT NOT GUARANTEED.



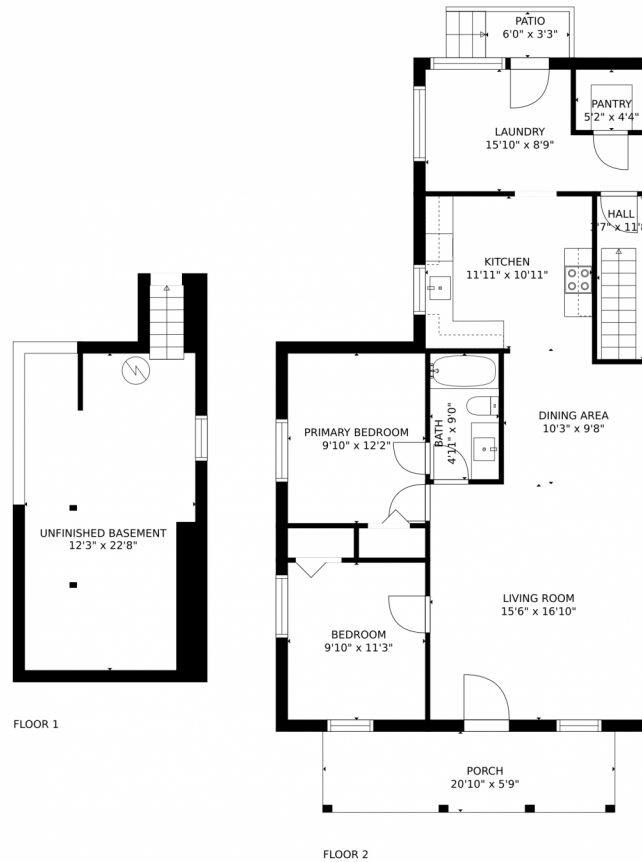
Disclaimer: Sizes and Dimensions are Approximate, Actual May Vary.



Jordan Kermes
952-956-2958
jordan@kermesllc.com



1520 E 9th St, Pueblo, CO 81001 – All Levels



GROSS INTERNAL AREA
FLOOR 1: 1 sq. ft, FLOOR 2: 996 sq. ft
EXCLUDED AREAS: UNFINISHED BASEMENT: 291 sq. ft
PATIO: 20 sq. ft, PORCH: 121 sq. ft
TOTAL: 997 sq. ft
MEASUREMENTS CALCULATED BY V1Photos.com ARE DEEMED HIGHLY RELIABLE BUT NOT GUARANTEED.



Disclaimer: Sizes and Dimensions are Approximate, Actual May Vary.



Jordan Kermes
952-956-2958
jordan@kermesllc.com

