





 Single Family

 2616 SQFT

 4 Beds

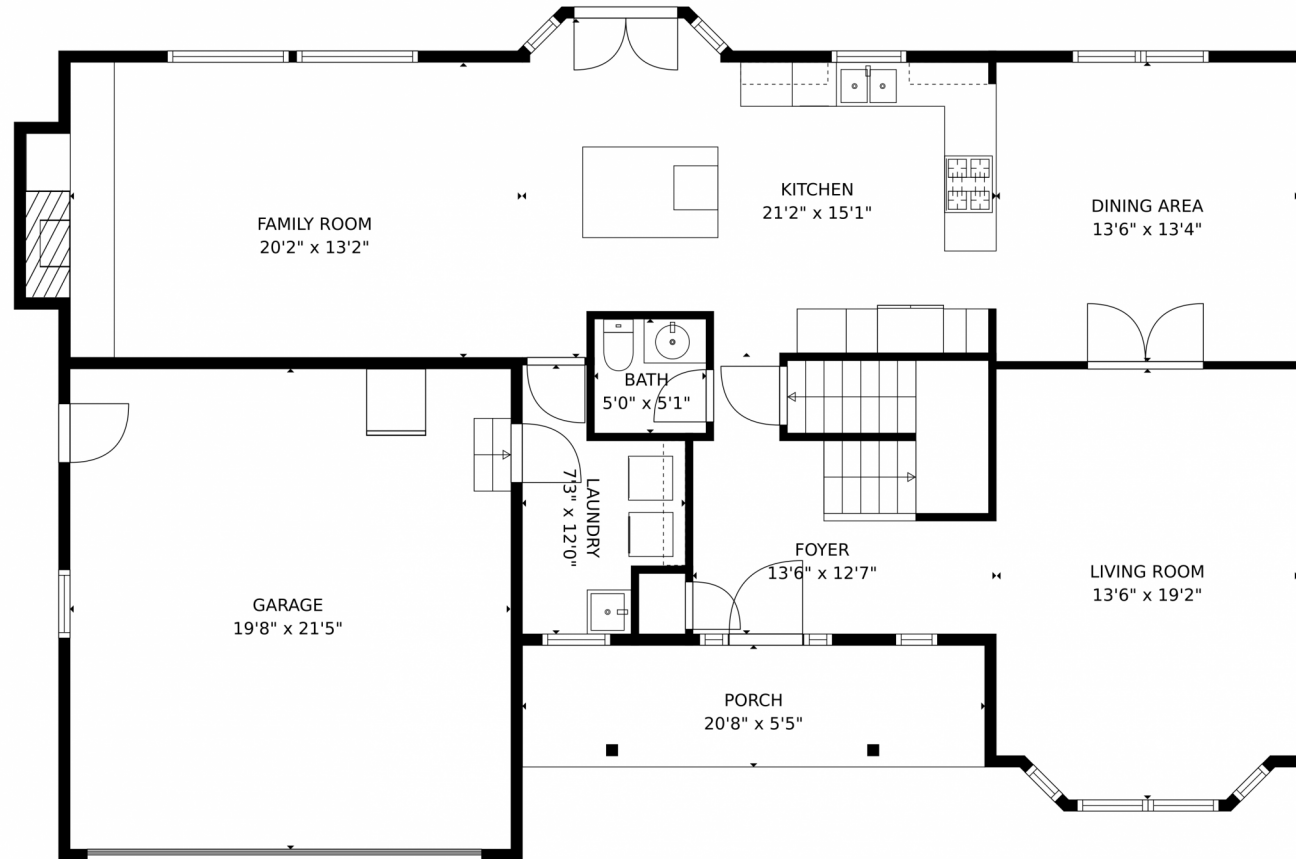
 2/1 Baths



**Taylor Haas**  
303-665-7368  
taylorh@coloradorpm.com  
<https://www.coloradorpm.com/available-rental-properties-denver>



# 7736 South Crocker Court, Littleton, CO 80120 – 1st Floor



GROSS INTERNAL AREA  
FLOOR 1: 9 sq. ft, FLOOR 2: 1271 sq. ft  
FLOOR 3: 1126 sq. ft, EXCLUDED AREAS:  
UNFINISHED BASEMENT: 976 sq. ft, GARAGE: 423 sq. ft  
PORCH: 112 sq. ft  
TOTAL: 2406 sq. ft

MEASUREMENTS CALCULATED BY V1Photos.COM ARE DEEMED HIGHLY RELIABLE BUT NOT GUARANTEED.



Disclaimer: Sizes and Dimensions are Approximate, Actual May Vary.



**Taylor Haas**

303-665-7368

taylorh@coloradorpm.com

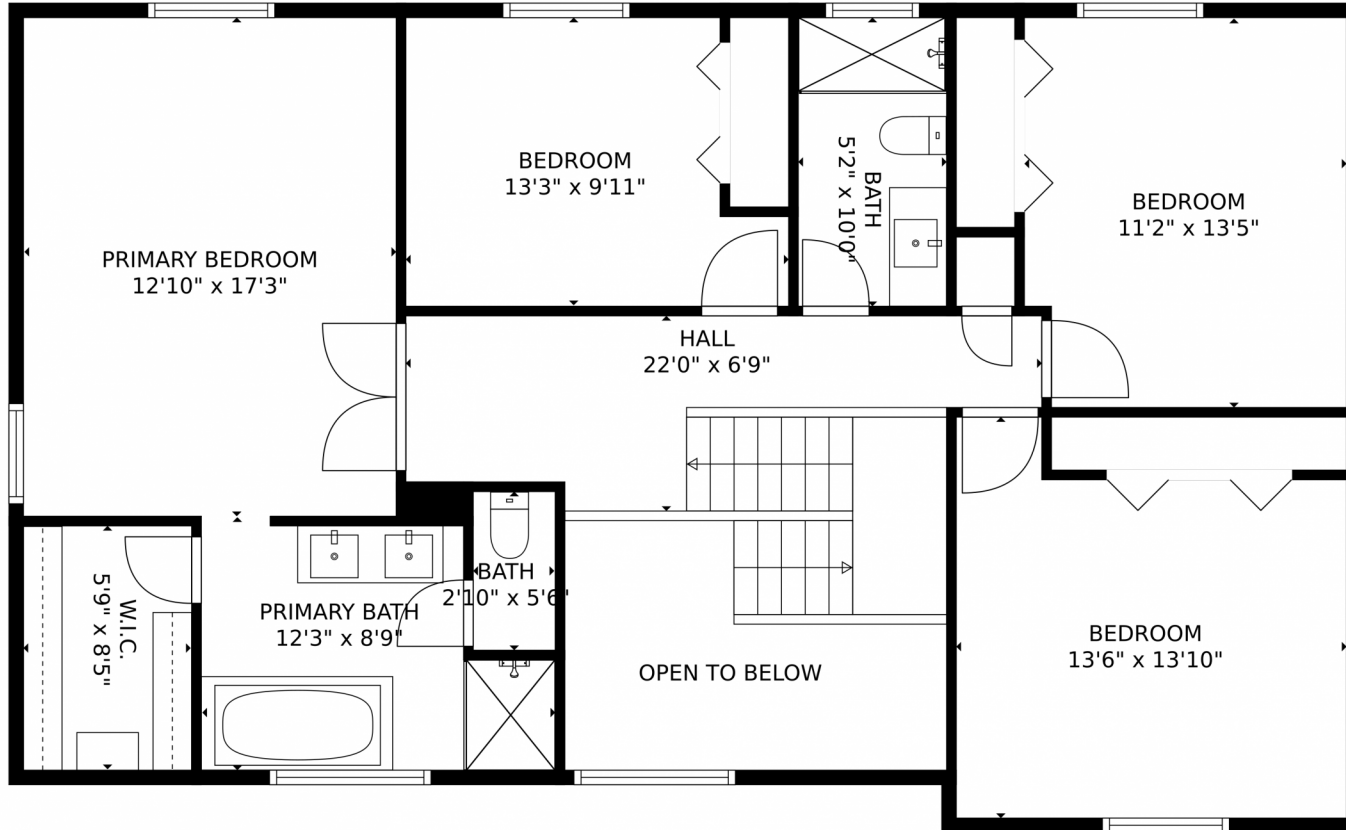
<https://www.coloradorpm.com/available-rental-properties-denver>



Scan code  
for more  
property  
details



7736 South Crocker Court, Littleton, CO 80120 – 2nd Floor



GROSS INTERNAL AREA  
FLOOR 1: 9 sq. ft, FLOOR 2: 1271 sq. ft  
FLOOR 3: 1126 sq. ft, EXCLUDED AREAS:  
UNFINISHED BASEMENT: 976 sq. ft, GARAGE: 423 sq. ft  
PORCH: 112 sq. ft  
TOTAL: 2406 sq. ft  
MEASUREMENTS CALCULATED BY V1Photos.COM ARE DEEMED HIGHLY RELIABLE BUT NOT GUARANTEED.

Disclaimer: Sizes and Dimensions are Approximate, Actual May Vary.



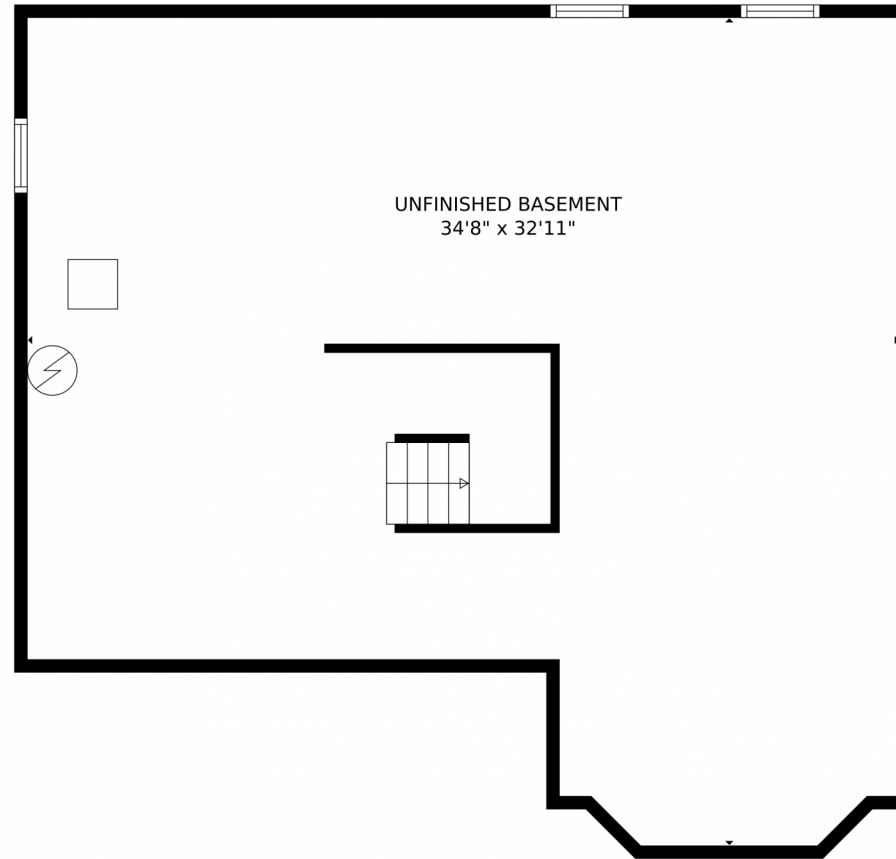
**Taylor Haas**  
303-665-7368  
taylorh@coloradorpm.com  
<https://www.coloradorpm.com/available-rental-properties-denver>



Scan code  
for more  
property  
details



7736 South Crocker Court, Littleton, CO 80120 – Basement



GROSS INTERNAL AREA  
FLOOR 1: 9 sq. ft, FLOOR 2: 1271 sq. ft  
FLOOR 3: 1126 sq. ft, EXCLUDED AREAS:  
UNFINISHED BASEMENT: 976 sq. ft, GARAGE: 423 sq. ft  
PORCH: 112 sq. ft  
TOTAL: 2406 sq. ft

MEASUREMENTS CALCULATED BY V1Photos.com ARE DEEMED HIGHLY RELIABLE BUT NOT GUARANTEED.



Disclaimer: Sizes and Dimensions are Approximate, Actual May Vary.



**Taylor Haas**

303-665-7368

taylorh@coloradorpm.com

<https://www.coloradorpm.com/available-rental-properties-denver>



Scan code  
for more  
property  
details



# 7736 South Crocker Court, Littleton, CO 80120 – All Floors



GROSS INTERNAL AREA  
FLOOR 1: 9 sq. ft, FLOOR 2: 1271 sq. ft  
FLOOR 3: 1126 sq. ft, EXCLUDED AREAS:  
UNFINISHED BASEMENT: 976 sq. ft, GARAGE: 423 sq. ft  
PORCH: 112 sq. ft  
TOTAL: 2406 sq. ft  
MEASUREMENTS CALCULATED BY V1Photos.COM ARE DEEMED HIGHLY RELIABLE BUT NOT GUARANTEED.



Disclaimer: Sizes and Dimensions are Approximate, Actual May Vary.



**Taylor Haas**  
303-665-7368  
taylorh@coloradorpm.com  
<https://www.coloradorpm.com/available-rental-properties-denver>

