



Townhouse



968 SQFT



2 Beds



1 Baths



1 Car



0.02 Acre



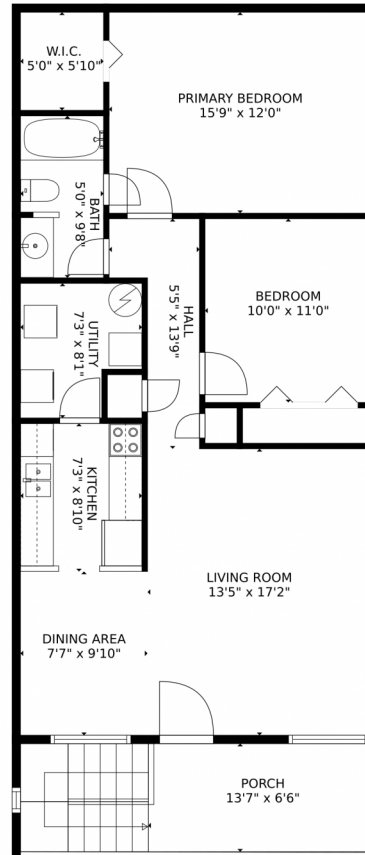
Ginny Kamin
303-884-0952
ginnykamin@earthlink.net



Scan code
for more
property
details



1139 Monroe Drive, Boulder, CO 80303 – Floor Plan



GROSS INTERNAL AREA
FLOOR 1: 911 sq. ft. EXCLUDED AREAS:
PORCH: 138 sq. ft.
TOTAL: 911 sq. ft.

MEASUREMENTS CALCULATED BY V1Photos.COM ARE DEEMED HIGHLY RELIABLE BUT NOT GUARANTEED.



Disclaimer: Sizes and Dimensions are Approximate, Actual May Vary.



Ginny Kamin
303-884-0952
ginnykamin@earthlink.net

