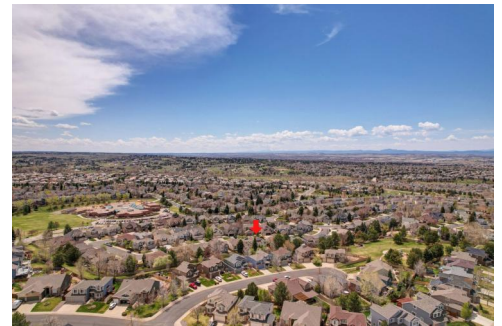




5751 South Bahama Circle West
 Aurora, CO 80015
 COMMUNITY: Piney Creek East

MLS # 2819520



Single Family



3034 SQFT



4 Beds



2/1 Baths



2 Car



0.16 Acre

PROPERTY DETAILS

Introducing a very rare opportunity to purchase a property that is truly exceptional. This stunning property has been lovingly care for by the current owners for over 20 years, and it's easy to see why it's at the very top of the real estate food chain, especially under \$650K. With 4 bedrooms, 3 bathrooms, this property is perfect for anyone looking for luxury family living in a picturesque location. The curb appeal of this property is absolutely breathtaking (Very Crisp & Clean with Brand New Exterior Paint), and the greenbelt location is nothing short of a dream. The interior greenbelt location is amazingly quiet and serene, making it the perfect place to escape from the hustle and bustle of everyday life. With top-of-the-line finishes both inside and out, this property truly has it all. The floor plan is amazing and feels grand throughout, with upgrades through the roof. The property landscaping is designed to delight, with charming curb appeal and attention to architectural detail. The property also features unfinished basement with 8-foot ceilings, providing ample space for storage or additional living space. Quick access to Cherry Creek Schools, Parks, Shopping, and Transportation makes this property the perfect location for anyone looking for convenience and luxury. ****INCREDIBLE PRIME LOCATION** BACKS TO GREENBELT**** Don't miss this opportunity to own an exceptional property. See it today!



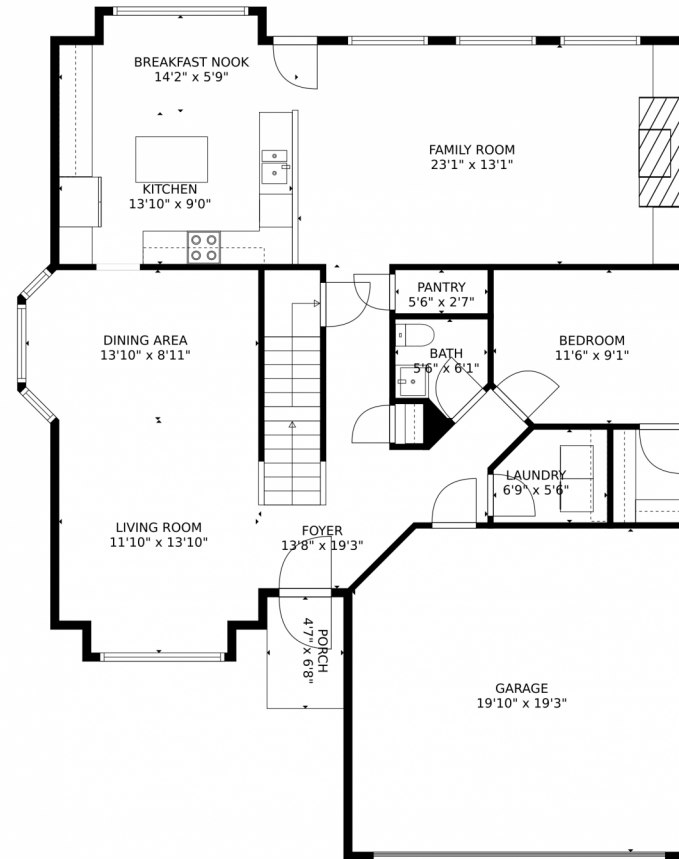
Shawn Engel
 303-308-8000
 shawnengel@earthlink.net
 http://www.corealestateonline.com



Scan code
 for more
 property
 details



5751 South Bahama Circle West, Aurora, CO 80015 — main level



GROSS INTERNAL AREA
FLOOR 1: 2 sq. ft, FLOOR 2: 1202 sq. ft
FLOOR 3: 906 sq. ft, EXCLUDED AREAS:
UNFINISHED BASEMENT: 661 sq. ft, GARAGE: 375 sq. ft
PORCH: 30 sq. ft
TOTAL: 2111 sq. ft
MEASUREMENTS CALCULATED BY V1Photos.COM ARE DEEMED HIGHLY RELIABLE BUT NOT GUARANTEED.



Disclaimer: Sizes and Dimensions are Approximate, Actual May Vary.



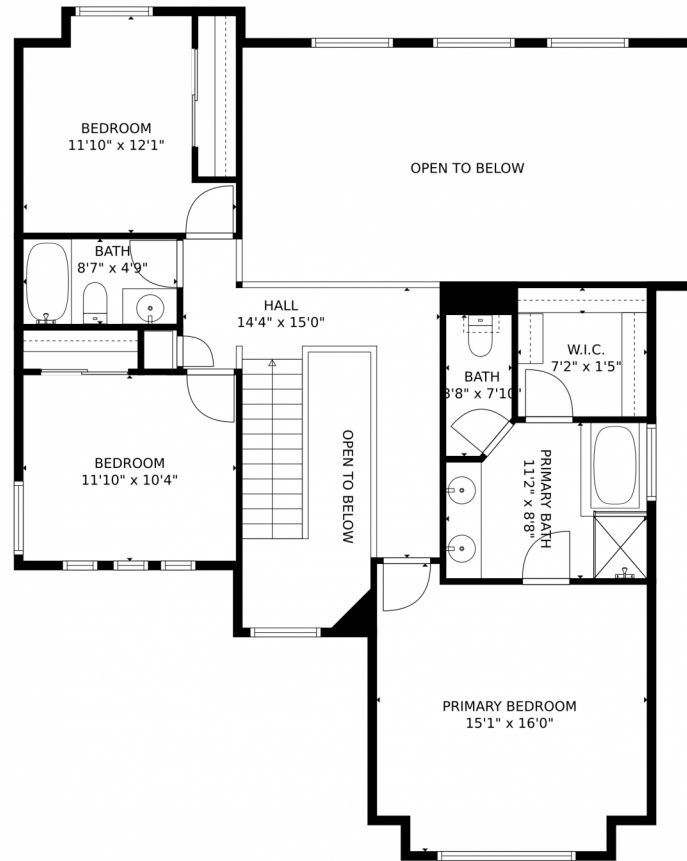
Shawn Engel
303-308-8000
shawnengel@earthlink.net
<http://www.corealestateonline.com>



Scan code
for more
property
details



5751 South Bahama Circle West, Aurora, CO 80015 — upper level



GROSS INTERNAL AREA
FLOOR 1: 2 sq. ft, FLOOR 2: 1202 sq. ft
FLOOR 3: 906 sq. ft, EXCLUDED AREAS:
UNFINISHED BASEMENT: 661 sq. ft, GARAGE: 375 sq. ft
PORCH: 30 sq. ft
TOTAL: 2111 sq. ft
MEASUREMENTS CALCULATED BY V1Photos.com ARE DEEMED HIGHLY RELIABLE BUT NOT GUARANTEED.



Disclaimer: Sizes and Dimensions are Approximate, Actual May Vary.

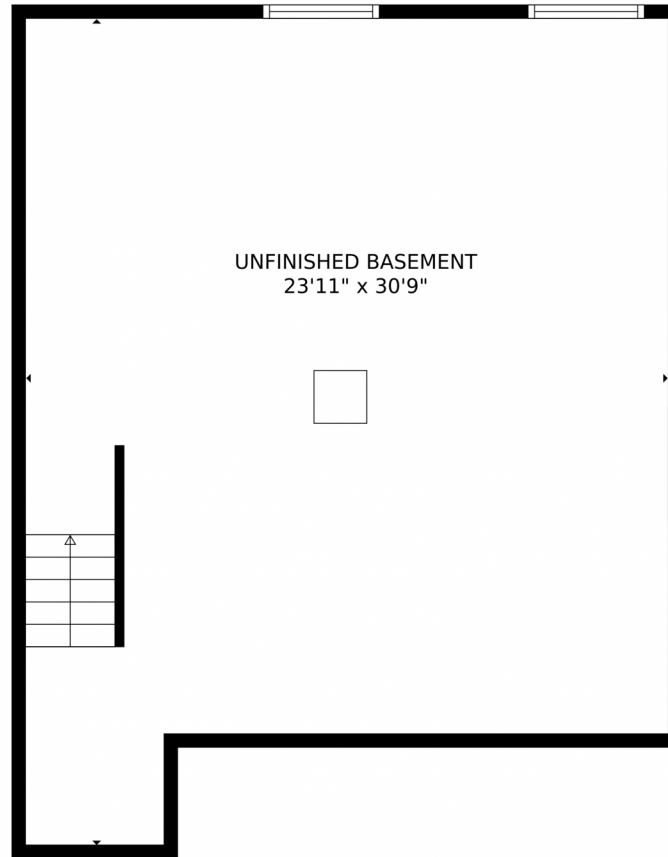


Shawn Engel
303-308-8000
shawnengel@earthlink.net
<http://www.corealestateonline.com>



Scan code
for more
property
details





GROSS INTERNAL AREA
FLOOR 1: 2 sq. ft, FLOOR 2: 1202 sq. ft
FLOOR 3: 906 sq. ft, EXCLUDED AREAS:
UNFINISHED BASEMENT: 661 sq. ft, GARAGE: 375 sq. ft
PORCH: 30 sq. ft
TOTAL: 2111 sq. ft

MEASUREMENTS CALCULATED BY V1Photos.com ARE DEEMED HIGHLY RELIABLE BUT NOT GUARANTEED.



Disclaimer: Sizes and Dimensions are Approximate, Actual May Vary.



Shawn Engel
303-308-8000
shawnengel@earthlink.net
<http://www.corealestateonline.com>



5751 South Bahama Circle West, Aurora, CO 80015 — all levels



GROSS INTERNAL AREA
FLOOR 1: 2 sq. ft, FLOOR 2: 1202 sq. ft
FLOOR 3: 906 sq. ft, EXCLUDED AREAS:
UNFINISHED BASEMENT: 661 sq. ft, GARAGE: 375 sq. ft
PORCH: 30 sq. ft
TOTAL: 2111 sq. ft
MEASUREMENTS CALCULATED BY V1Photos.com ARE DEEMED HIGHLY RELIABLE BUT NOT GUARANTEED.



Disclaimer: Sizes and Dimensions are Approximate, Actual May Vary.



Shawn Engel
303-308-8000
shawnengel@earthlink.net
<http://www.corealestateonline.com>



Scan code
for more
property
details

