




 Single Family

 1413 SQFT

 3 Beds

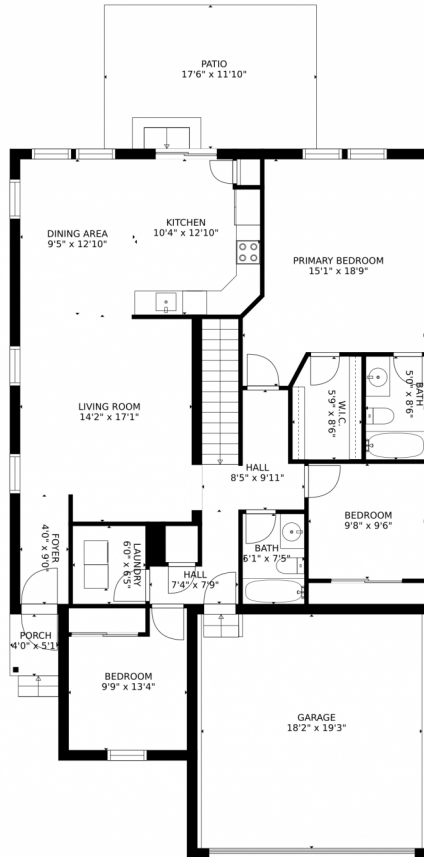
 2 Baths



Taylor Haas
303-665-7368
taylorh@coloradorpm.com
<https://www.coloradorpm.com/available-rental-properties-denv>



5524 Kittredge Street, Denver, CO 80239 – Main Level



GROSS INTERNAL AREA
FLOOR 1: 50 sq. ft. FLOOR 2: 1347 sq. ft
EXCLUDED AREAS: UNFINISHED BASEMENT: 1224 sq. ft
GARAGE: 365 sq. ft. PATIO: 208 sq. ft
PORCH: 20 sq. ft
TOTAL: 1397 sq. ft

MEASUREMENTS CALCULATED BY V1Photos.COM ARE DEEMED HIGHLY RELIABLE BUT NOT GUARANTEED.



Disclaimer: Sizes and Dimensions are Approximate, Actual May Vary.



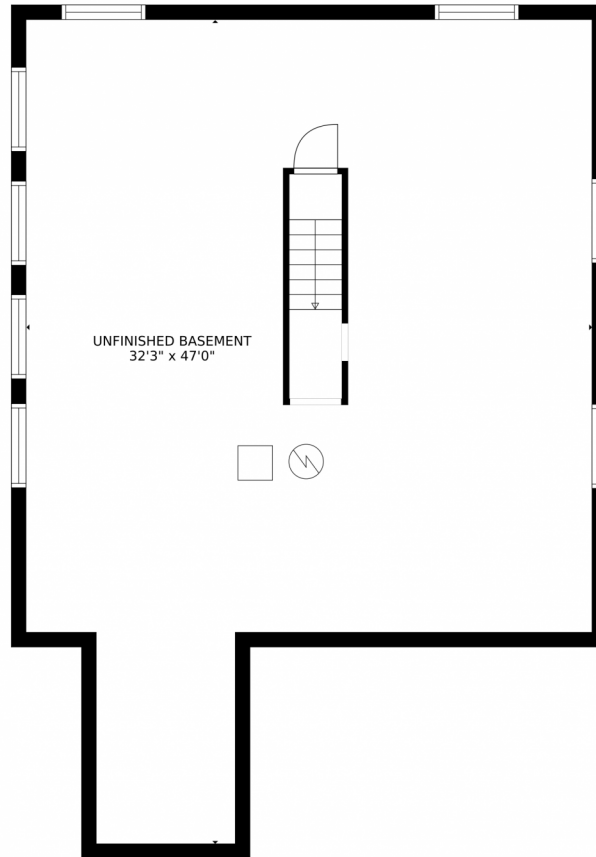
Taylor Haas
303-665-7368
taylorh@coloradorpm.com
<https://www.coloradorpm.com/available-rental-properties-denv>



Scan code
for more
property
details



5524 Kittredge Street, Denver, CO 80239 – Lower Level



GROSS INTERNAL AREA
FLOOR 1: 50 sq. ft, FLOOR 2: 1347 sq. ft
EXCLUDED AREAS: , UNFINISHED BASEMENT: 1224 sq. ft
GARAGE: 365 sq. ft, PATIO: 208 sq. ft
PORCH: 20 sq. ft
TOTAL: 1397 sq. ft
MEASUREMENTS CALCULATED BY V1Photos.COM ARE DEEMED HIGHLY RELIABLE BUT NOT GUARANTEED.



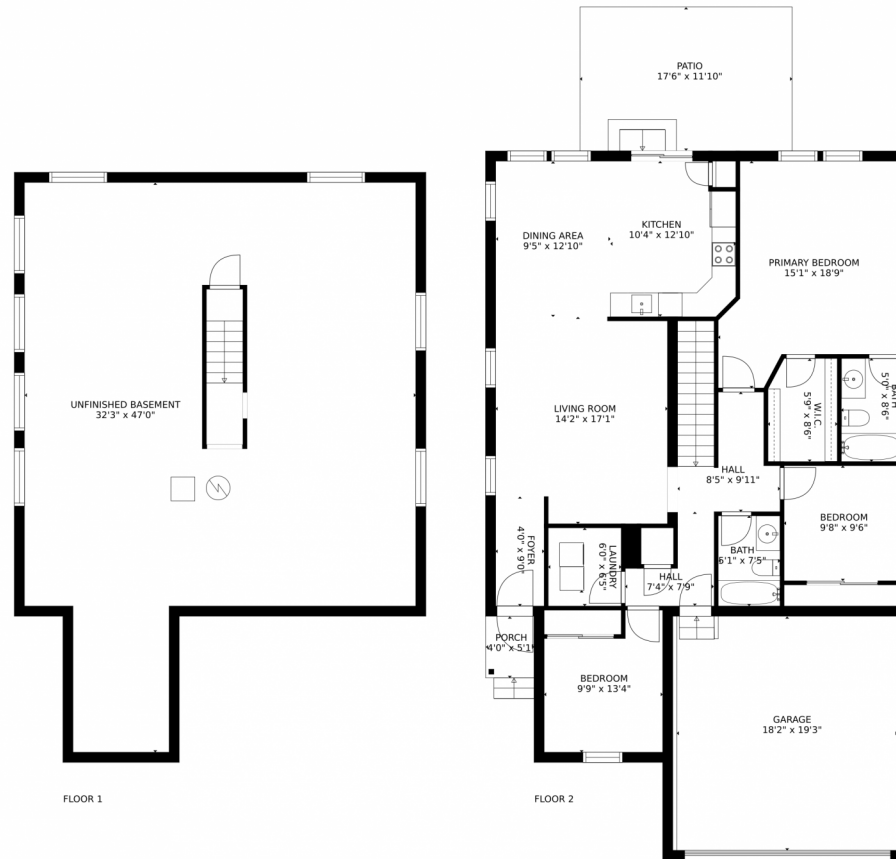
Disclaimer: Sizes and Dimensions are Approximate, Actual May Vary.



Taylor Haas
303-665-7368
taylorh@coloradorpm.com
<https://www.coloradorpm.com/available-rental-properties-denv>



5524 Kittredge Street, Denver, CO 80239 – All Levels



GROSS INTERNAL AREA
FLOOR 1: 50 sq. ft., FLOOR 2: 1347 sq. ft.
EXCLUDED AREAS: UNFINISHED BASEMENT: 1224 sq. ft.
GARAGE: 365 sq. ft., PATIO: 208 sq. ft.
PORCH: 20 sq. ft.
TOTAL: 1397 sq. ft.

MEASUREMENTS CALCULATED BY V1Photos.com ARE DEEMED HIGHLY RELIABLE BUT NOT GUARANTEED.



Disclaimer: Sizes and Dimensions are Approximate, Actual May Vary.



Taylor Haas
303-665-7368
taylorh@coloradorm.com
<https://www.coloradorm.com/available-rental-properties-denver>



Scan code
for more
property
details

