




9200 Grandview Avenue, Arvada, CO 80002 - All Levels



 Single Family

 1892 SQFT

 3 Beds

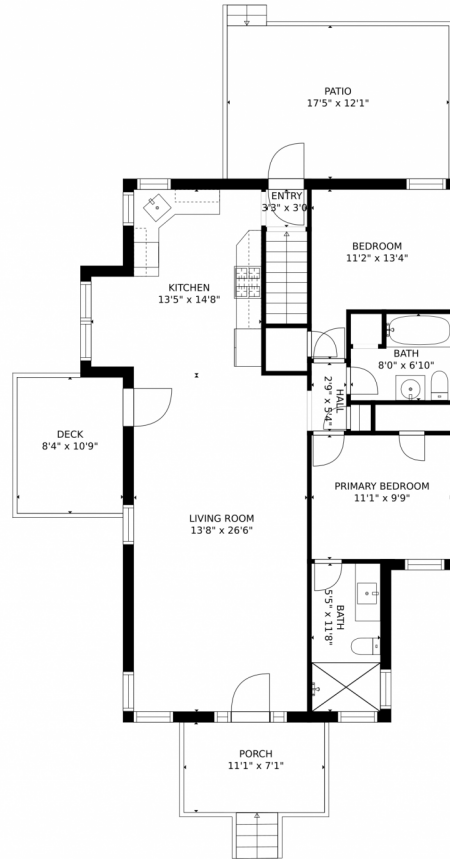
 3 Baths



Taylor Haas
 303-665-7368
 taylorh@coloradorpm.com
<https://www.coloradorpm.com/available-rental-properties-denver>



9200 Grandview Avenue, Arvada, CO 80002 – Main Level



GROSS INTERNAL AREA
FLOOR 1: 706 sq. ft. FLOOR 2: 990 sq. ft.
EXCLUDED AREAS: , DECK: 90 sq. ft.
PATIO: 211 sq. ft. PORCH: 79 sq. ft.
TOTAL: 1696 sq. ft.

MEASUREMENTS CALCULATED BY V1Photos.com ARE DEEMED HIGHLY RELIABLE BUT NOT GUARANTEED.



Disclaimer: Sizes and Dimensions are Approximate, Actual May Vary.



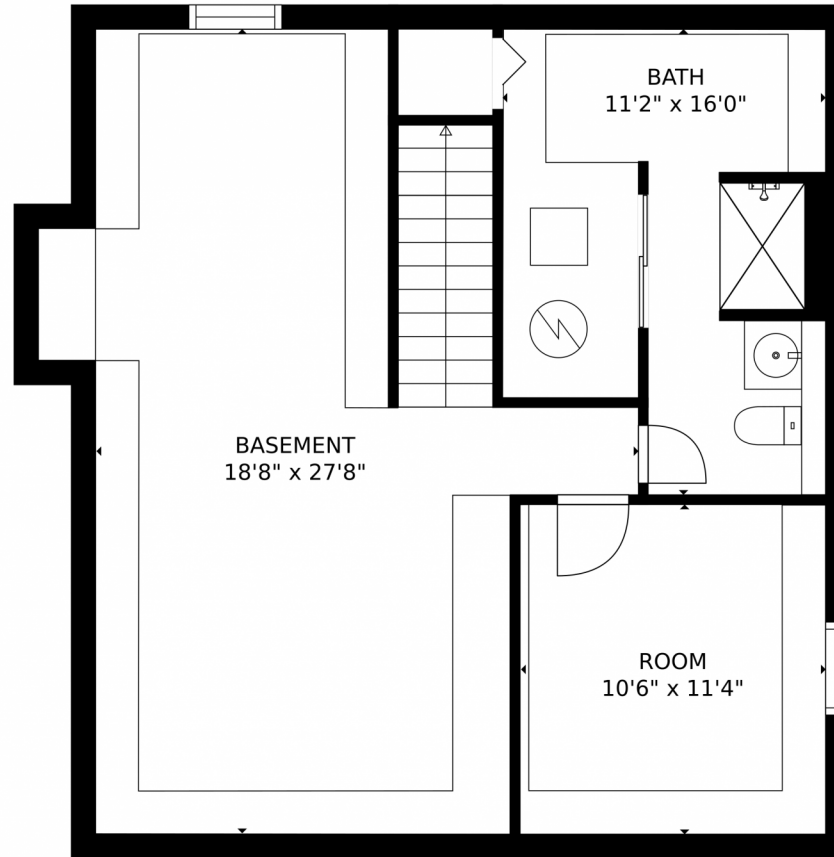
Taylor Haas
303-665-7368
taylorh@coloradorpm.com
<https://www.coloradorpm.com/available-rental-properties-denver>



Scan code
for more
property
details



9200 Grandview Avenue, Arvada, CO 80002 – Lower Level



GROSS INTERNAL AREA
FLOOR 1: 706 sq. ft. FLOOR 2: 990 sq. ft.
EXCLUDED AREAS: , DECK: 90 sq. ft.
PATIO: 211 sq. ft. PORCH: 79 sq. ft.
TOTAL: 1696 sq. ft.
MEASUREMENTS CALCULATED BY V1Photos.COM ARE DEEMED HIGHLY RELIABLE BUT NOT GUARANTEED.



Disclaimer: Sizes and Dimensions are Approximate, Actual May Vary.



Taylor Haas
303-665-7368
taylorh@coloradorpm.com
<https://www.coloradorpm.com/available-rental-properties-denver>



9200 Grandview Avenue, Arvada, CO 80002 – All Levels



GROSS INTERNAL AREA
FLOOR 1: 706 sq. ft. FLOOR 2: 990 sq. ft.
EXCLUDED AREAS: , DECK: 90 sq. ft.
PATIO: 211 sq. ft. PORCH: 79 sq. ft.
TOTAL: 1696 sq. ft.
MEASUREMENTS CALCULATED BY V1Photos.com ARE DEEMED HIGHLY RELIABLE BUT NOT GUARANTEED.



Disclaimer: Sizes and Dimensions are Approximate, Actual May Vary.



Taylor Haas
303-665-7368
taylorh@coloradorpm.com
<https://www.coloradorpm.com/available-rental-properties-denver>

