



5917 Black Forest Drive  
 Elizabeth, CO 80107  
 COMMUNITY: Britanie Ridge Estates

MLS # 7150895  
 PRICE \$900,000



Single Family   3472 SQFT   2 Beds   1/1 Baths   2 Car   6.19 Acre

## PROPERTY DETAILS

Welcome home to the highly desirable and sought after Britanie Ridge Estates of Elizabeth, CO! If you have been looking for your country home that's still close enough to it all, your search is over! This sprawling and sparkling ranch style home was built in 2022, why wait to build new when you can have nearly brand new today? Perfectly situated atop over 6 acres and every finish is an absolute dream from natural hardwoods that carry you throughout most of the home including the main living areas to plush carpeting in the owner's suite along with a fantastic spa-inspired private bathroom. A sunny living room greets you featuring a cozy gas fireplace with floor to ceiling stone lain surround and tons of space for many furniture design options. This gourmet kitchen is every chef's dream featuring an abundance of Euro-style cabinetry for your every storage need which is beautifully accentuated by hex-style tile backsplash and ample gleaming granite topped counter space including the center island which yields bar style seating and is perfect for your busy mornings on the go. Just off of the kitchen you will find a sunny eat-in dining space also featuring wall to wall picture windows and a large enough design for many dining suite options. This sprawling layout was really made for the entertainer's heart beautifully connecting the living room to the kitchen and dining then further accessing the back patio and outdoor living space. This massive layout is completed by a secondary



**Tatyana Sturm**  
 720-350-5909  
 tatyana@exitrealtydtc.com  
 https://thestorckteam.com



bedroom, perfect for a home office space or guest quarters too, a half bathroom, and the laundry facilities which include the washer and dryer. Make this acreage your own as its currently a blank canvas awaiting your personal touch. The Town of Elizabeth offers plenty to do with community events like the Friday Night Market featuring live music and food trucks galore along with Movies in the Park and of course the Mayor's Tree Lighting for Christmas time.



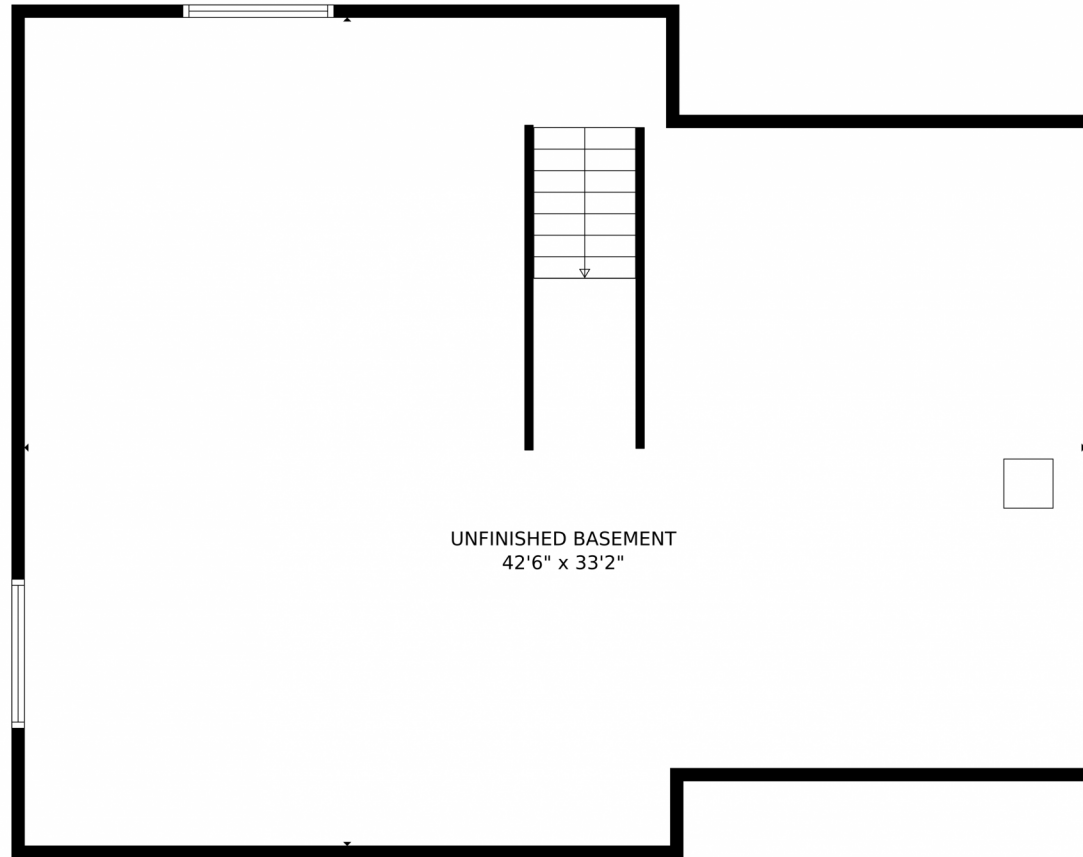
**Tatyana Sturm**  
720-350-5909  
tatyana@exitrealtydtc.com  
<https://thestorckteam.com>



Scan code  
for more  
property  
details



# 5917 Black Forest Drive, Elizabeth, CO 80107 – Lower Level



GROSS INTERNAL AREA  
FLOOR 1: 9 sq. ft, FLOOR 2: 2055 sq. ft  
EXCLUDED AREAS: , UNFINISHED BASEMENT: 1284 sq. ft  
GARAGE: 671 sq. ft, PATIO: 159 sq. ft  
PORCH: 140 sq. ft  
TOTAL: 2063 sq. ft

MEASUREMENTS CALCULATED BY V1Photos.com ARE DEEMED HIGHLY RELIABLE BUT NOT GUARANTEED.



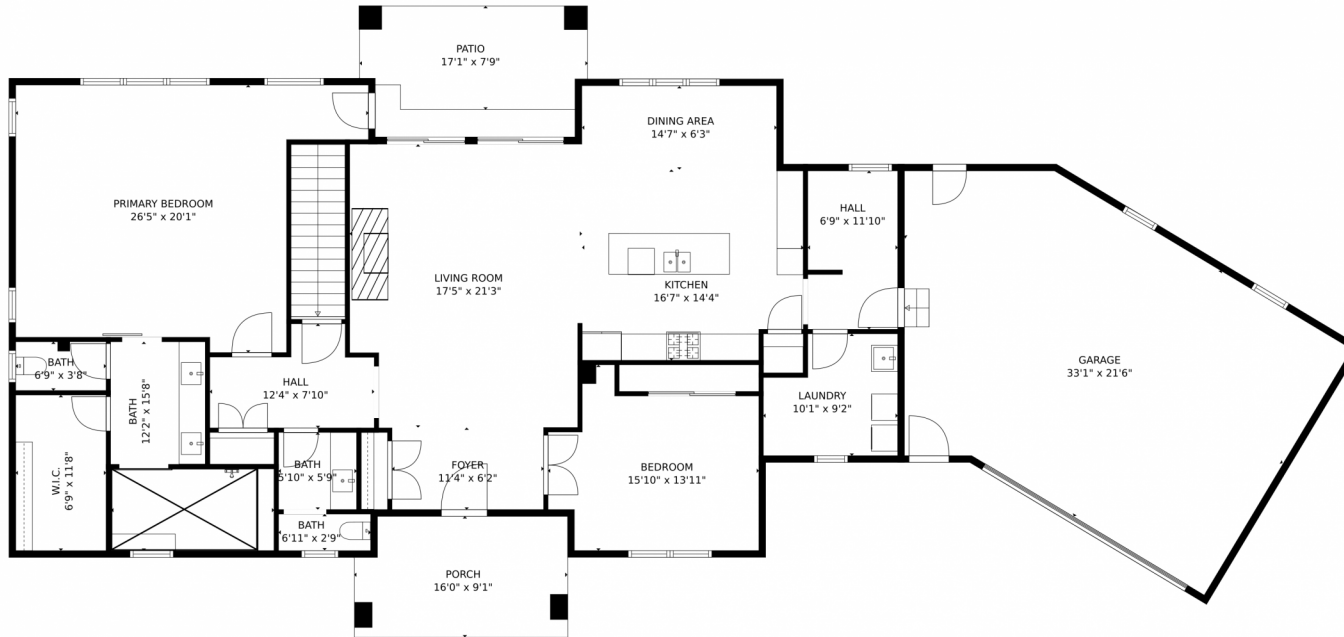
Disclaimer: Sizes and Dimensions are Approximate, Actual May Vary.



**Tatyana Sturm**  
720-350-5909  
tatyana@exitrealtydtc.com  
<https://thestorckteam.com>



# 5917 Black Forest Drive, Elizabeth, CO 80107 – Main Level



GROSS INTERNAL AREA  
FLOOR 1: 9 sq. ft. FLOOR 2: 2055 sq. ft.  
EXCLUDED AREAS: UNFINISHED BASEMENT: 1284 sq. ft.  
GARAGE: 671 sq. ft. PATIO: 159 sq. ft.  
PORCH: 140 sq. ft.  
TOTAL: 2063 sq. ft.

MEASUREMENTS CALCULATED BY V1PHOTOS.COM ARE DEEMED HIGHLY RELIABLE BUT NOT GUARANTEED.



Disclaimer: Sizes and Dimensions are Approximate, Actual May Vary.



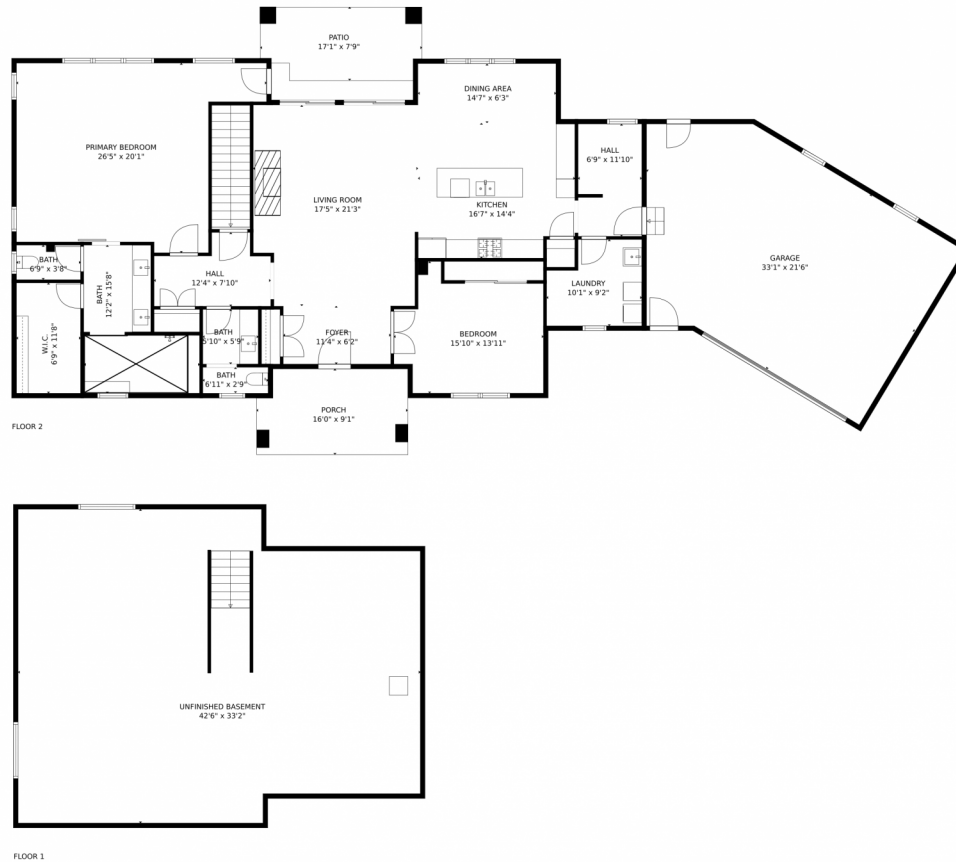
**Tatyana Sturm**  
720-350-5909  
tatyana@exitrealtydtc.com  
<https://thestorckteam.com>



Scan code  
for more  
property  
details



# 5917 Black Forest Drive, Elizabeth, CO 80107 – All Levels



GROSS INTERNAL AREA  
FLOOR 1: 9 sq. ft, FLOOR 2: 2055 sq. ft  
EXCLUDED AREAS: , UNFINISHED BASEMENT: 1284 sq. ft  
GARAGE: 671 sq. ft, PATIO: 159 sq. ft  
PORCH: 140 sq. ft  
TOTAL: 2063 sq. ft

MEASUREMENTS CALCULATED BY V1Photos.COM ARE DEEMED HIGHLY RELIABLE BUT NOT GUARANTEED.



Disclaimer: Sizes and Dimensions are Approximate, Actual May Vary.



**Tatyana Sturm**  
720-350-5909  
tatyana@exitrealttydtc.com  
<https://thestorckteam.com>



Scan code  
for more  
property  
details

