



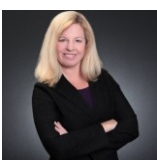
2359 Treasure Isle Drive
 Palm Beach Gardens, FL 33410
 COMMUNITY: Mariner's Cove

MLS
 # A11383693

Property is actually 2 bedrooms & 2 baths w/ a loft being used as a 3rd bedroom



Townhouse 1400 SQFT 3 Beds 3/1 Baths 1 Car



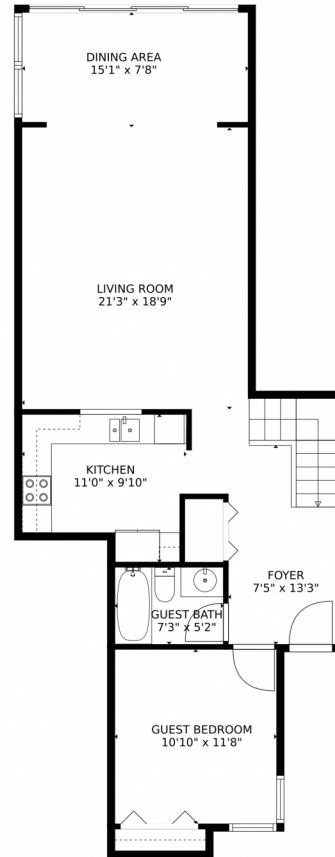
Rebecca Giacobba
 410-320-4868
 rebecca@giarealtyteam.com
<https://www.giaelite.com/>



Scan code
 for more
 property
 details



2359 Treasure Isle Drive, Palm Beach Gardens, FL 33410 – 1st Floor



GROSS INTERNAL AREA
FLOOR 1: 831 sq. ft, FLOOR 2: 611 sq. ft
TOTAL: 1442 sq. ft
MEASUREMENTS CALCULATED BY V1Photos.COM ARE DEEMED HIGHLY RELIABLE BUT NOT GUARANTEED.



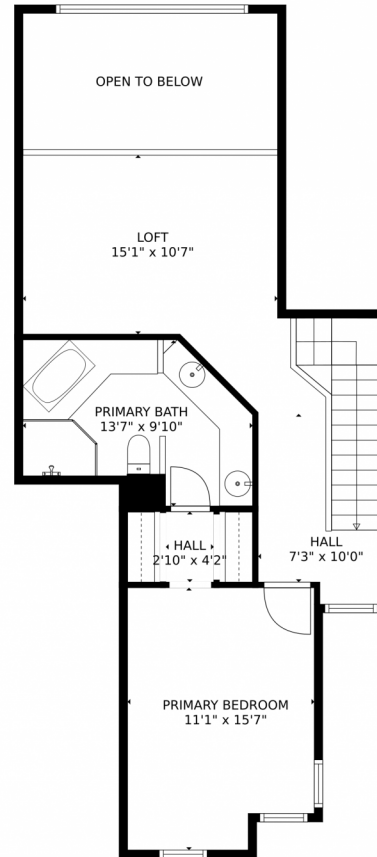
Disclaimer: Sizes and Dimensions are Approximate, Actual May Vary.



Rebecca Giacobba
410-320-4868
rebecca@giarealtyteam.com
<https://www.giaelite.com/>



2359 Treasure Isle Drive, Palm Beach Gardens, FL 33410 – 2nd Floor



GROSS INTERNAL AREA
FLOOR 1: 831 sq. ft, FLOOR 2: 611 sq. ft
TOTAL: 1442 sq. ft
MEASUREMENTS CALCULATED BY V1Photos.COM ARE DEEMED HIGHLY RELIABLE BUT NOT GUARANTEED.



Disclaimer: Sizes and Dimensions are Approximate, Actual May Vary.



Rebecca Giacobba
410-320-4868
rebecca@giarealtyteam.com
<https://www.giaelite.com/>

