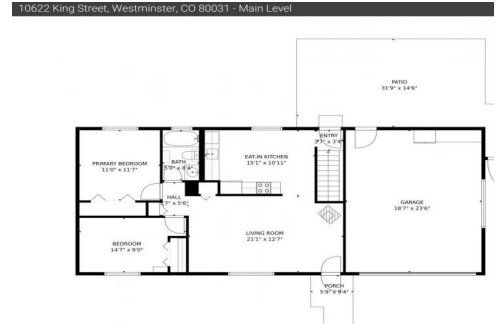




10622 King Street  
Westminster, CO 80031  
COMMUNITY: Wandering View



Single Family



1650 SQFT



4 Beds



1/1 Baths



2 Car



0.17 Acre



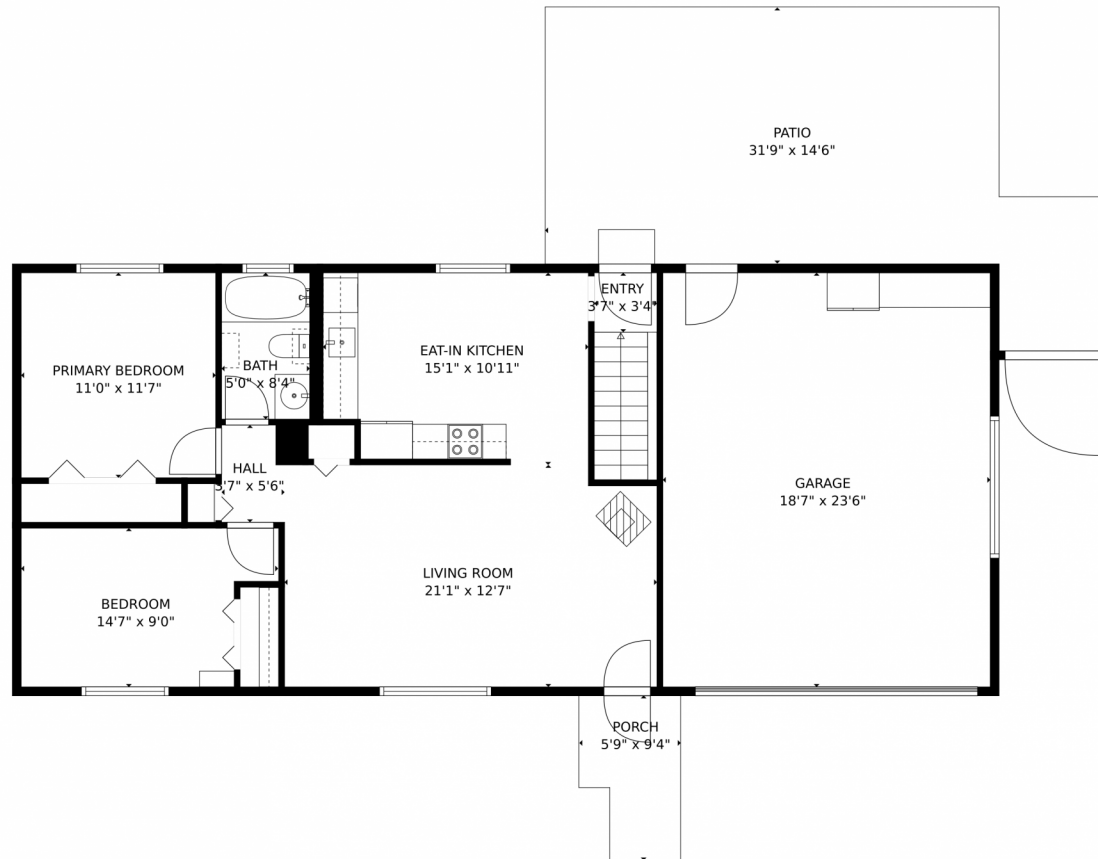
Jason Cassidy  
720-220-6964  
jason@coloradorpm.com



Scan code  
for more  
property  
details



# 10622 King Street, Westminster, CO 80031 – Main Level



GROSS INTERNAL AREA  
FLOOR 1: 783 sq. ft., FLOOR 2: 846 sq. ft.  
EXCLUDED AREAS: , GARAGE: 436 sq. ft.  
PATIO: 427 sq. ft., PORCH: 47 sq. ft.  
TOTAL: 1629 sq. ft.  
MEASUREMENTS CALCULATED BY V1Photos.com ARE DEEMED HIGHLY RELIABLE BUT NOT GUARANTEED.

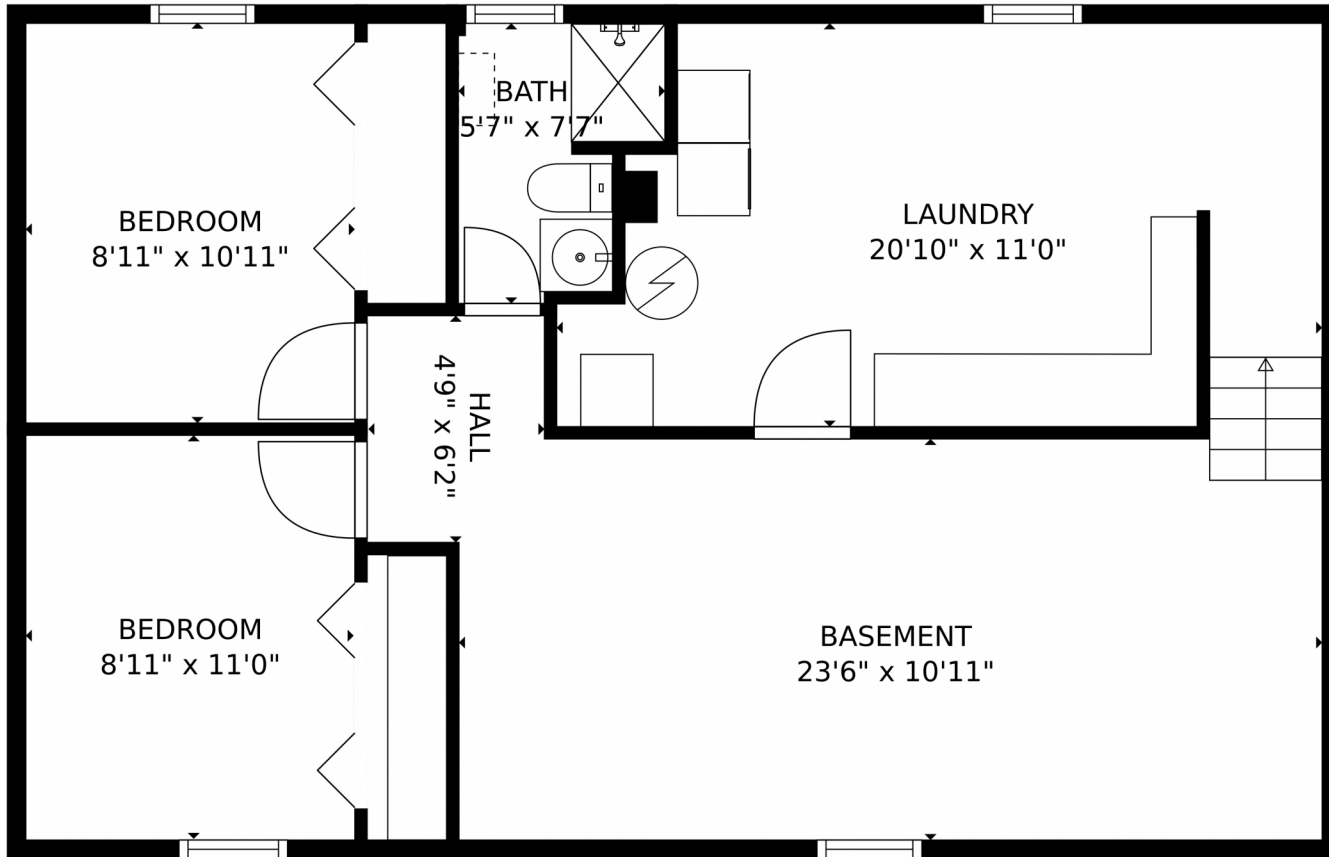
Disclaimer: Sizes and Dimensions are Approximate, Actual May Vary.



**Jason Cassidy**  
720-220-6964  
jason@coloradorpm.com



10622 King Street, Westminster, CO 80031 – Lower Level



GROSS INTERNAL AREA  
FLOOR 1: 783 sq. ft, FLOOR 2: 846 sq. ft  
EXCLUDED AREAS: , GARAGE: 436 sq. ft  
PATIO: 427 sq. ft, PORCH: 47 sq. ft  
TOTAL: 1629 sq. ft  
MEASUREMENTS CALCULATED BY V1Photos.COM ARE DEEMED HIGHLY RELIABLE BUT NOT GUARANTEED.



Disclaimer: Sizes and Dimensions are Approximate, Actual May Vary.



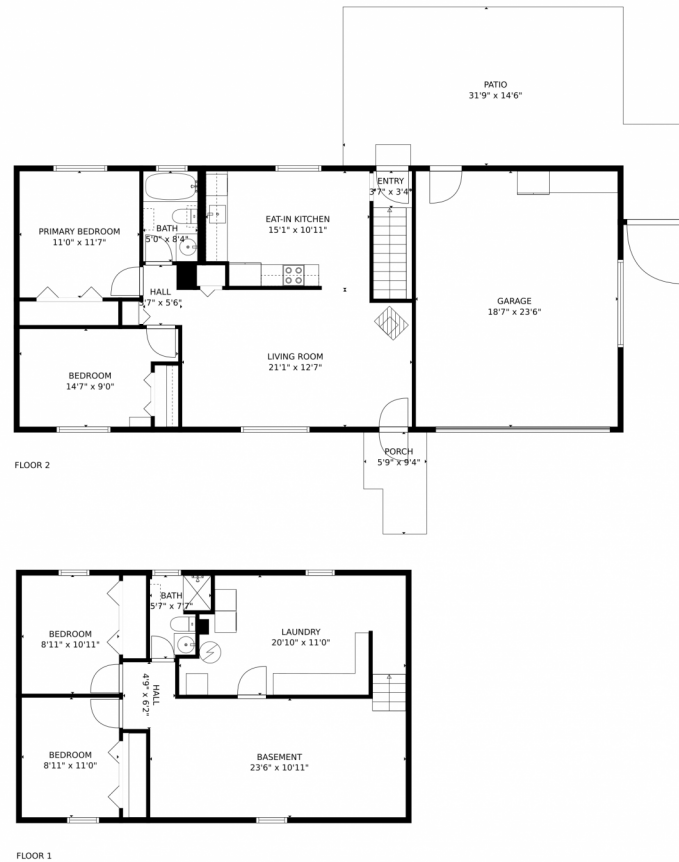
**Jason Cassidy**  
720-220-6964  
jason@coloradorpm.com



Scan code  
for more  
property  
details



# 10622 King Street, Westminster, CO 80031 – All Levels



GROSS INTERNAL AREA  
FLOOR 1: 783 sq. ft, FLOOR 2: 846 sq. ft  
EXCLUDED AREAS: , GARAGE: 436 sq. ft  
PATIO: 427 sq. ft, PORCH: 47 sq. ft  
TOTAL: 1629 sq. ft  
MEASUREMENTS CALCULATED BY V1Photos.com ARE DEEMED HIGHLY RELIABLE BUT NOT GUARANTEED.



Disclaimer: Sizes and Dimensions are Approximate, Actual May Vary.



**Jason Cassidy**  
720-220-6964  
jason@coloradorpm.com

