




 Single Family

 2492 SQFT

 4 Beds

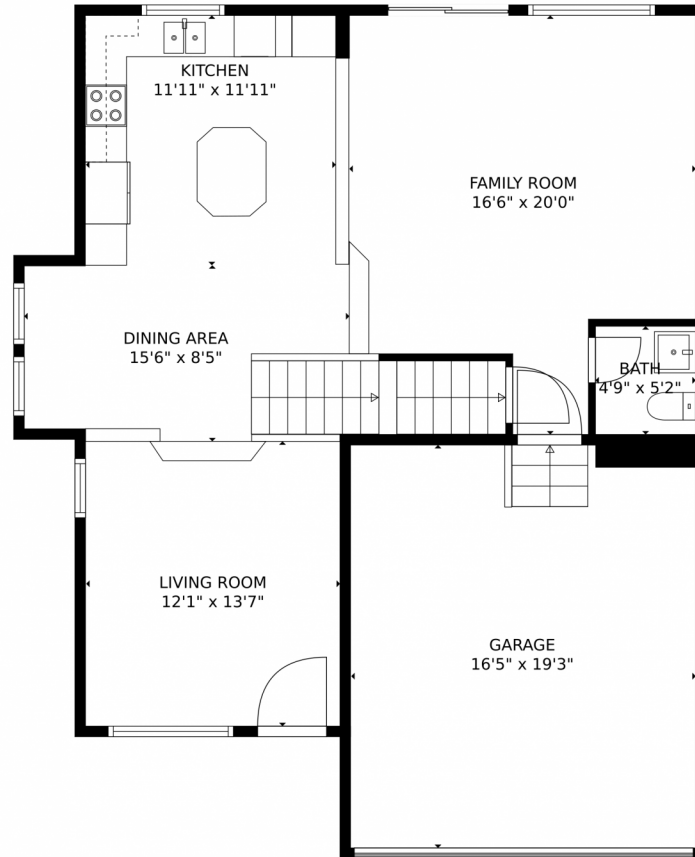
 4/1 Baths



Taylor Haas
303-665-7368
taylorh@coloradorpm.com
<https://www.coloradorpm.com/available-rental-properties-denv>



5511 Liverpool Street, Denver, CO 80249 – Main Floor



GROSS INTERNAL AREA
FLOOR 1: 702 sq. ft, FLOOR 2: 773 sq. ft
FLOOR 3: 1103 sq. ft, EXCLUDED AREAS:
GARAGE: 316 sq. ft
TOTAL: 2578 sq. ft

MEASUREMENTS CALCULATED BY V1Photos.COM ARE DEEMED HIGHLY RELIABLE BUT NOT GUARANTEED.



Disclaimer: Sizes and Dimensions are Approximate, Actual May Vary.



Taylor Haas

303-665-7368

taylorh@coloradorpm.com

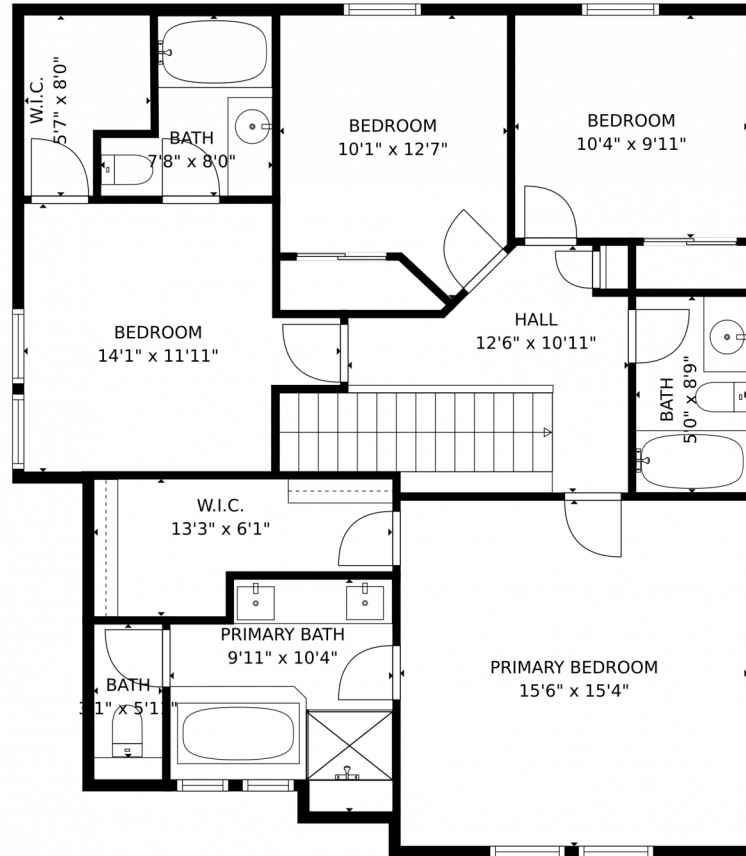
<https://www.coloradorpm.com/available-rental-properties-denver>



Scan code
for more
property
details



5511 Liverpool Street, Denver, CO 80249 – Second Floor



GROSS INTERNAL AREA
FLOOR 1: 702 sq. ft. FLOOR 2: 773 sq. ft.
FLOOR 3: 1103 sq. ft. EXCLUDED AREAS:
GARAGE: 316 sq. ft.
TOTAL: 2578 sq. ft.

MEASUREMENTS CALCULATED BY V1Photos.COM ARE DEEMED HIGHLY RELIABLE BUT NOT GUARANTEED.



Disclaimer: Sizes and Dimensions are Approximate, Actual May Vary.



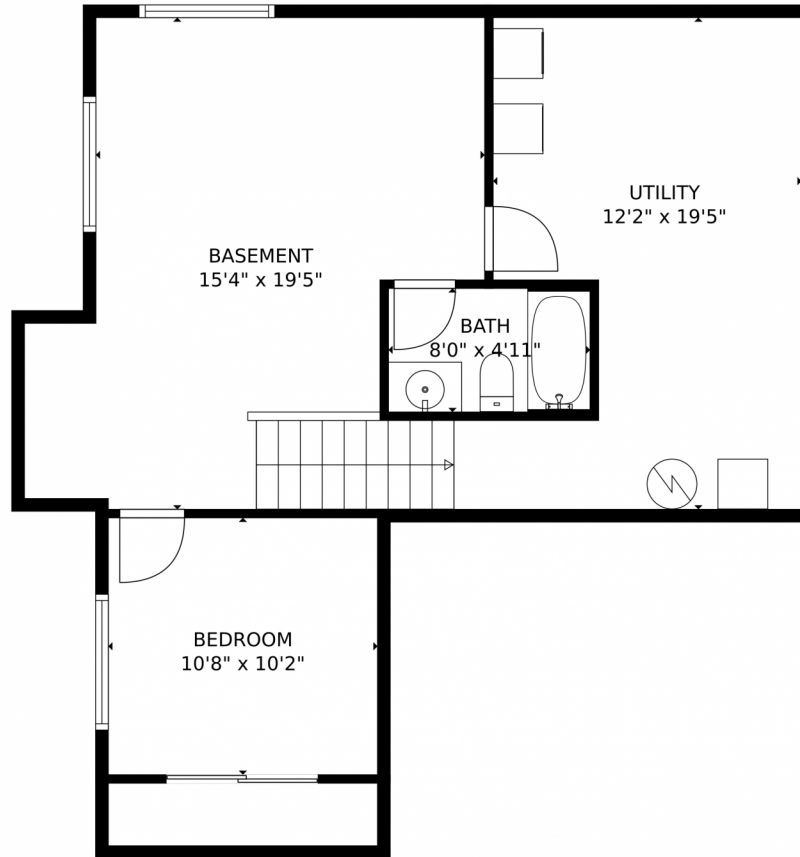
Taylor Haas
303-665-7368
taylorh@coloradorpm.com
<https://www.coloradorpm.com/available-rental-properties-denver>



Scan code
for more
property
details



5511 Liverpool Street, Denver, CO 80249 – Basement



GROSS INTERNAL AREA
FLOOR 1: 702 sq. ft, FLOOR 2: 773 sq. ft
FLOOR 3: 1103 sq. ft, EXCLUDED AREAS:
GARAGE: 316 sq. ft
TOTAL: 2578 sq. ft

MEASUREMENTS CALCULATED BY V1Photos.COM ARE DEEMED HIGHLY RELIABLE BUT NOT GUARANTEED.

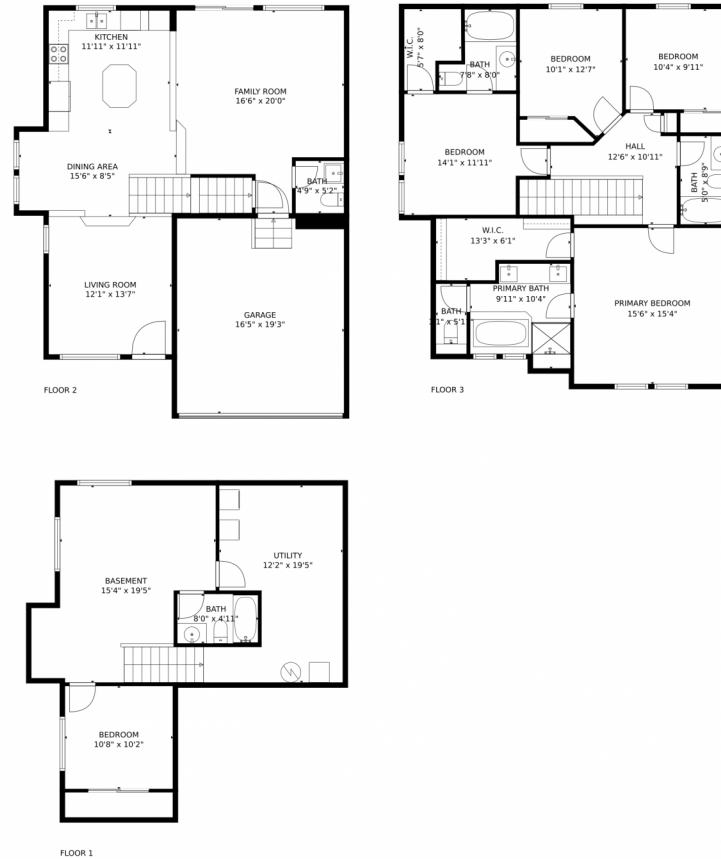
Disclaimer: Sizes and Dimensions are Approximate, Actual May Vary.



Taylor Haas
303-665-7368
taylorh@coloradorpm.com
<https://www.coloradorpm.com/available-rental-properties-denver>



5511 Liverpool Street, Denver, CO 80249 – All Floors



GROSS INTERNAL AREA
FLOOR 1: 702 sq. ft, FLOOR 2: 773 sq. ft
FLOOR 3: 1103 sq. ft, EXCLUDED AREAS:
GARAGE: 316 sq. ft
TOTAL: 2578 sq. ft

MEASUREMENTS CALCULATED BY V1Photos.COM ARE DEEMED HIGHLY RELIABLE BUT NOT GUARANTEED.



Disclaimer: Sizes and Dimensions are Approximate, Actual May Vary.



Taylor Haas
303-665-7368
taylorh@coloradorpm.com
<https://www.coloradorpm.com/available-rental-properties-denv>



Scan code
for more
property
details

