







 Single Family  3192 SQFT  3 Beds  2/1 Baths  2 Car  0.16 Acre

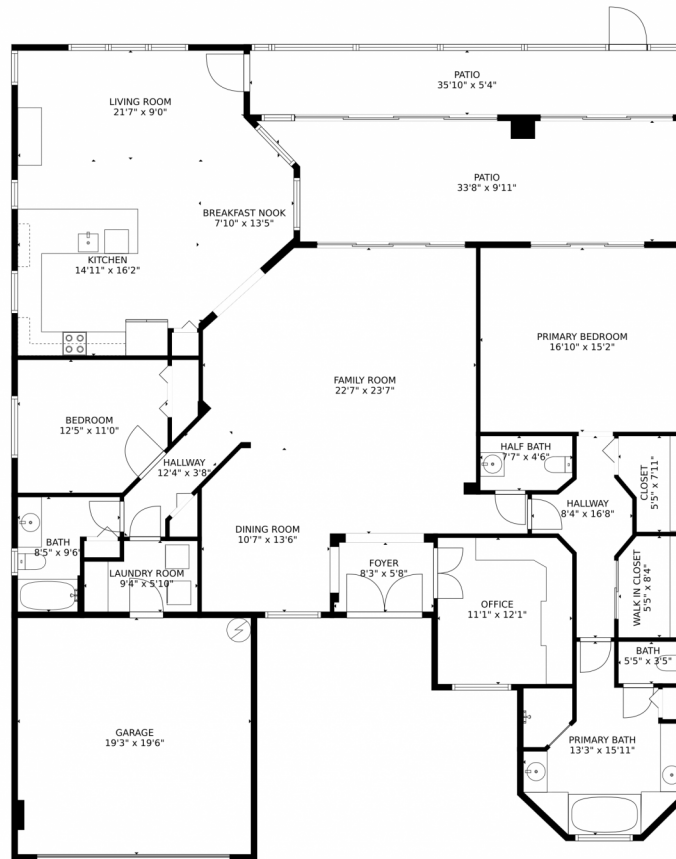
PROPERTY DETAILS

Welcome to this stunning single-family home in a gated community exclusively for those aged 55+. This home features 2 bedrooms plus a den/office/3rd bedroom & 2.5 bathrooms. It is the LARGEST model in this luxury community, offering high ceilings & an open floor plan that seamlessly connects the living room, eat-in kitchen, family room, dining room, and a spacious screened-in patio. The primary suite is oversized & includes outside views, a double tray ceiling, 2 walk-in closets & luxurious bathroom w/ upscale tile, wowza shower, dual vanities, & soaking tub. The recently remodeled kitchen is bright & expansive + the home is upgraded, well-maintained, & move-in ready. Enjoy the community's palatial clubhouse with top-notch amenities, a tennis club, & a year-round social & fitness calendar.

Paige Coburn
954-540-8220
BeachTownPaige@kw.com



6543 Via Palermo, Delray Beach, FL 33446 – All Levels



GROSS INTERNAL AREA
FLOOR 1: 2272 sq. ft. EXCLUDED AREAS:
GARAGE: 376 sq. ft. PATIO: 514 sq. ft.
TOTAL: 2272 sq. ft.
MEASUREMENTS CALCULATED BY V1Photos.com ARE DEEMED HIGHLY RELIABLE BUT NOT GUARANTEED.



Disclaimer: Sizes and Dimensions are Approximate, Actual May Vary.

Paige Coburn
954-540-8220
BeachTownPaige@kw.com

