

COMPASS

1440 E 84th Place
Denver, CO 80229
COMMUNITY: City View Heights

MLS # 9820637
PRICE \$465,000



Single Family



1968 SQFT



4 Beds



2 Baths



2 Car



0.18 Acre

PROPERTY DETAILS

Welcome to your beautiful new home! This 4 bed, 2 bath ranch is the perfect combination of modern convenience and classic charm. You'll love the expansive living & dining rooms, newly updated kitchen with sleek cabinets and stainless steel appliances, plus a full finished basement for extra space. But that's not all - this home also offers a detached two car garage and large yard for outdoor entertaining. Plus, it's conveniently located close to light rail, making your commute downtown Denver quick and easy! Don't miss out on this great opportunity - schedule a showing today!



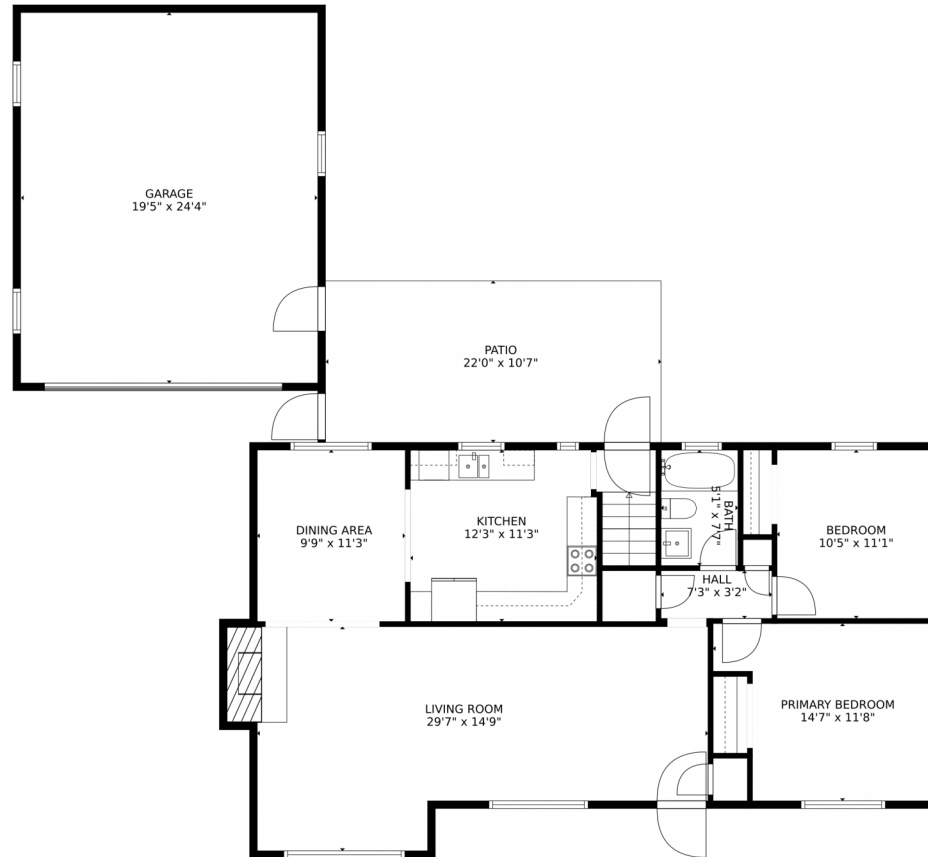
Melissa Hill
303-638-5157
melissa@melissahillrealestate.com



Scan code
for more
property
details



1440 E 84th Place, Denver, CO 80229 – 1st Floor



GROSS INTERNAL AREA
FLOOR 1: 738 sq. ft. FLOOR 2: 1074 sq. ft.
EXCLUDED AREAS: GARAGE: 475 sq. ft.
PATIO: 234 sq. ft.
TOTAL: 1812 sq. ft.

MEASUREMENTS CALCULATED BY V1Photos.COM ARE DEEMED HIGHLY RELIABLE BUT NOT GUARANTEED.



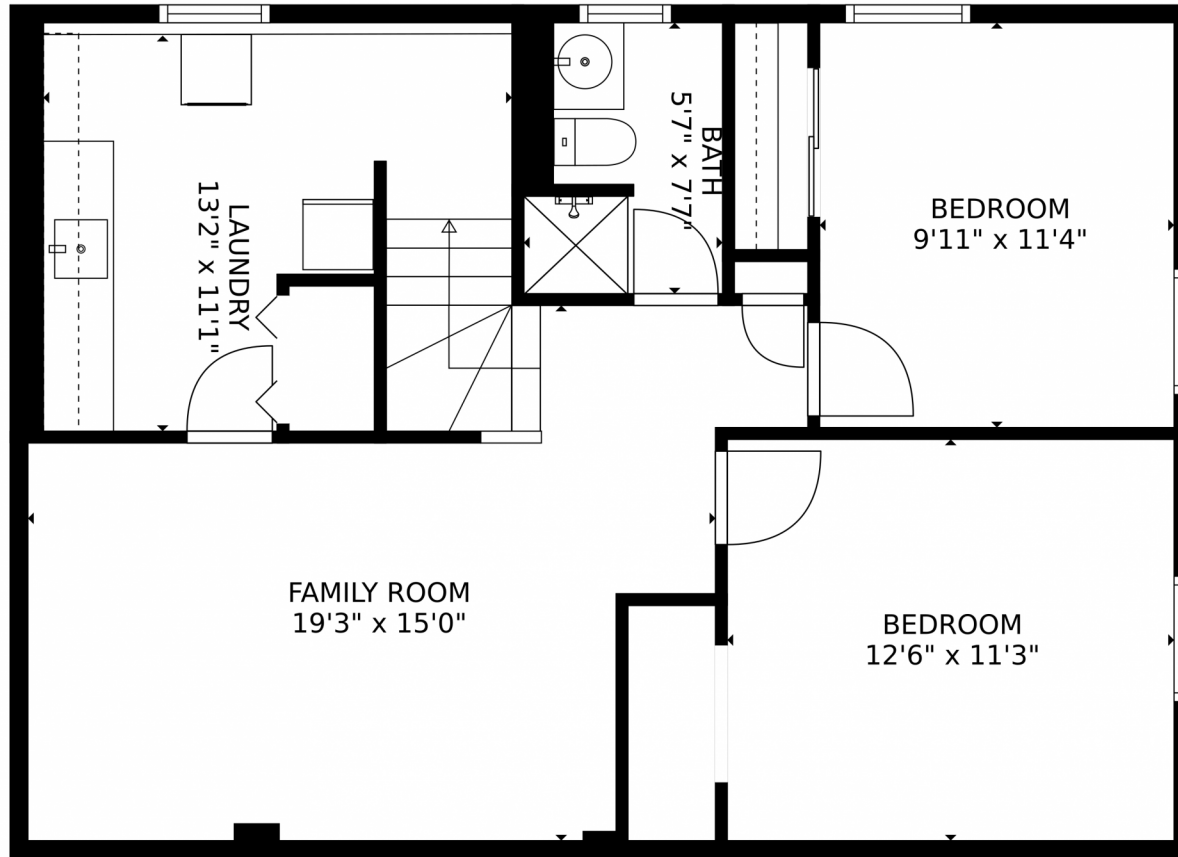
Disclaimer: Sizes and Dimensions are Approximate, Actual May Vary.



Melissa Hill
303-638-5157
melissa@melissahillrealestate.com



1440 E 84th Place, Denver, CO 80229 – Basement



GROSS INTERNAL AREA
FLOOR 1: 738 sq. ft, FLOOR 2: 1074 sq. ft
EXCLUDED AREAS: , GARAGE: 475 sq. ft
PATIO: 234 sq. ft
TOTAL: 1812 sq. ft

MEASUREMENTS CALCULATED BY V1Photos.com ARE DEEMED HIGHLY RELIABLE BUT NOT GUARANTEED.



Disclaimer: Sizes and Dimensions are Approximate, Actual May Vary.



Melissa Hill
303-638-5157
melissa@melissahillrealestate.com



1440 E 84th Place, Denver, CO 80229 – All Floors



GROSS INTERNAL AREA
FLOOR 1: 738 sq. ft, FLOOR 2: 1074 sq. ft
EXCLUDED AREAS: , GARAGE: 475 sq. ft
PATIO: 234 sq. ft
TOTAL: 1812 sq. ft
MEASUREMENTS CALCULATED BY V1Photos.COM ARE DEEMED HIGHLY RELIABLE BUT NOT GUARANTEED.

Disclaimer: Sizes and Dimensions are Approximate, Actual May Vary.



Melissa Hill
303-638-5157
melissa@melissahillrealestate.com



Scan code
for more
property
details