



19492 E Monmouth Place
Centennial, CO 80015
COMMUNITY: Fox Hill

MLS # 6332001
PRICE \$485,000



Single Family 1865 SQFT 4 Beds 2 Baths 2 Car 0.25 Acre

PROPERTY DETAILS

Welcome home to Fox Hill of Centennial, CO! A comfortable and homey ranch style home is found showcasing brand new interior paint, a new roof, brand new carpet, and updated bathrooms and kitchen. A warm and welcoming living room greets you upon arrival featuring gorgeous and easy to care for laminate flooring that carries you throughout the main level of the home, this space is open to the eat-in kitchen which has been recently remastered with beautiful stainless steel appliances along with newer granite counter tops and abundant natural cabinetry for your every storage need. Three generously sized bedrooms are all found on the main level to include the owner's suite with two spare bedrooms allowing for room to grow or even a home office space. But wait... There's more! The basement is also finished offering so much versatility as it is currently serving as a fully functioning teen suite including a large secondary living space that would also make for a phenomenal family room along with another full bathroom and sizable closet. This lovely home is quietly nestled atop a large nearly quarter acre lot with plenty of space in your new backyard for lounge and play along with a sprawling back deck which will make you the envy of all your family and friends this upcoming Summer at your next BBQ. You will love living in Fox Hill where residents enjoy no HOA along with the award winning education system of Cherry Creek School District to include Eaglecrest HS,



Tatyana Sturm
720-350-5909
tatyana@exitrealtydtc.com
<https://thestorckteam.com>



Thunder Ridge MS, and Peakview Elementary which is practically in your new backyard as you can walk there in about 5 minutes. Enjoy endless dining, shopping, and entertainment options in the Southlands Outdoor Retail District featuring a full AMC Dine-In Movie Theater, abundant casual dining options along with higher end restaurant options as well, and so many shopping choices. The Southlands Mall also features a robust courtyard area with a mini splash park in the Summer and a skating rink in the Winter.



Tatyana Sturm

720-350-5909

tatyana@exitrealtydtc.com

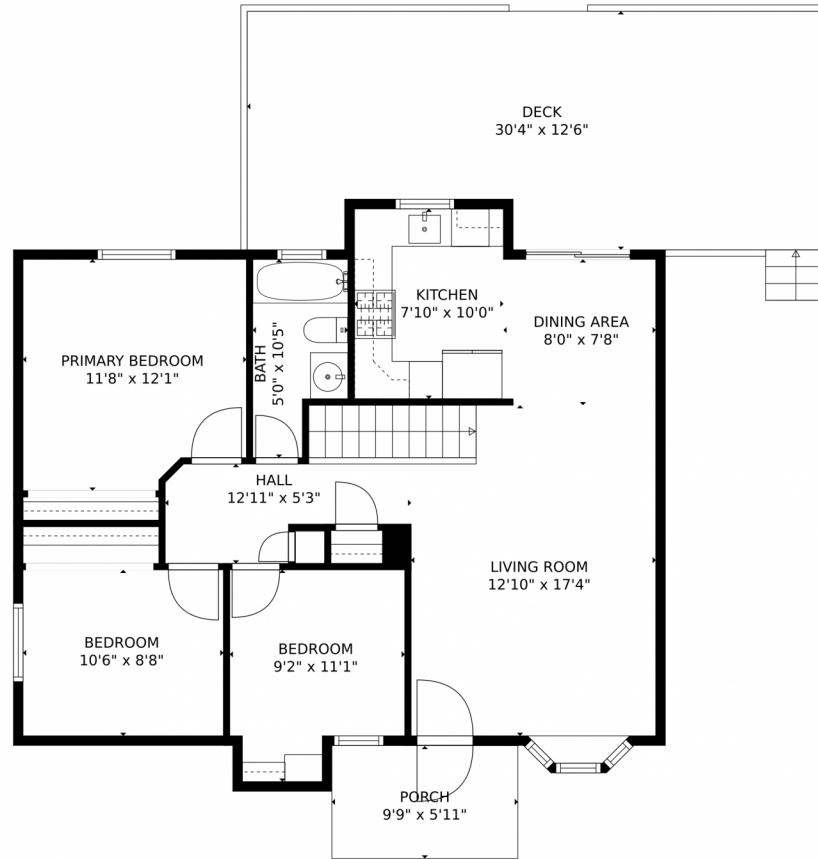
<https://thestorckteam.com>



Scan code
for more
property
details



19492 E Monmouth Place, Centennial, CO 80015 – 1st Floor



GROSS INTERNAL AREA
Below Ground: 590 sq. ft, FLOOR 2: 865 sq. ft
EXCLUDED AREAS: ELECTRICAL ROOM: 86 sq. ft
UTILITY: 104 sq. ft
PORCH: 58 sq. ft
DECK: 356 sq. ft
TOTAL: 1455 sq. ft

MEASUREMENTS CALCULATED BY V1Photos.com ARE DEEMED HIGHLY RELIABLE BUT NOT GUARANTEED.



Disclaimer: Sizes and Dimensions are Approximate, Actual May Vary.



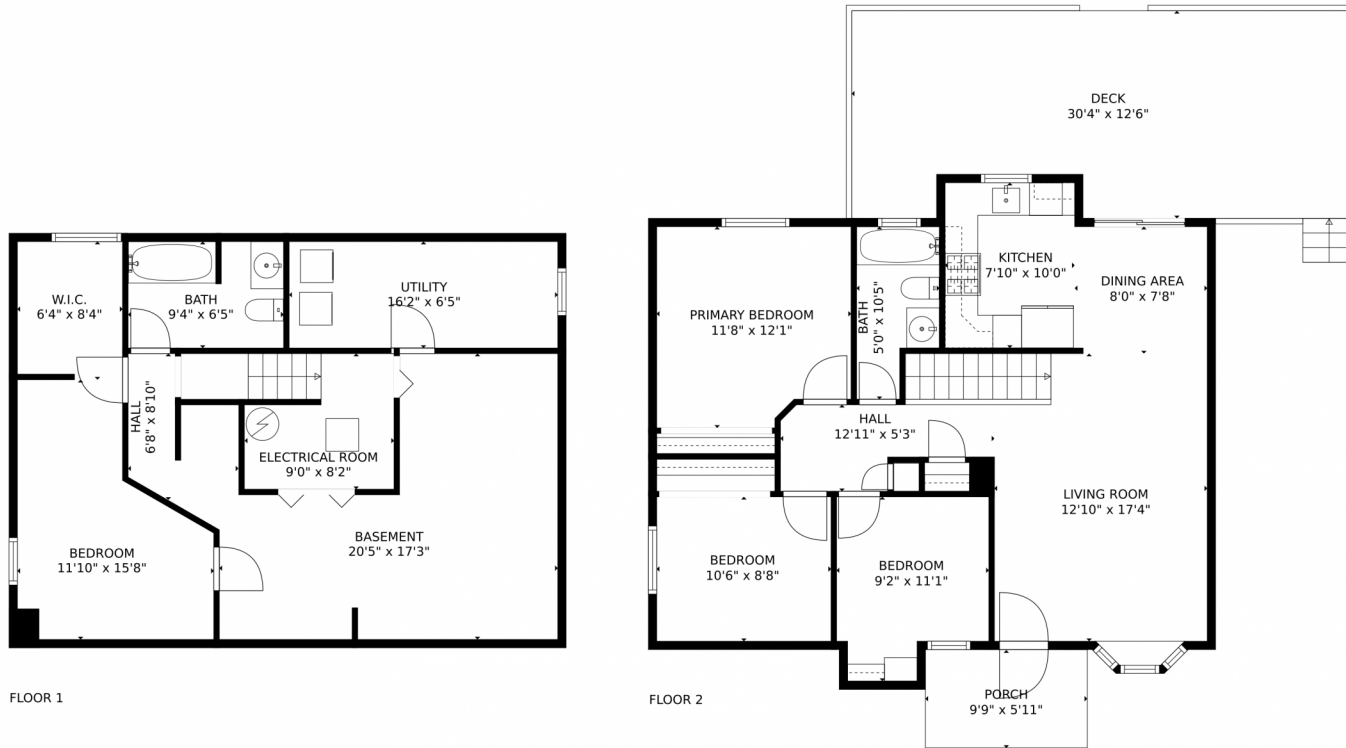
Tatyana Sturm
720-350-5909
tatyana@exitrealtydtc.com
<https://thestorckteam.com>



Scan code
for more
property
details



19492 E Monmouth Place, Centennial, CO 80015 – All Floors



GROSS INTERNAL AREA
Below Ground: 590 sq. ft, FLOOR 2: 865 sq. ft
EXCLUDED AREAS: ELECTRICAL ROOM: 86 sq. ft
UTILITY: 104 sq. ft
PORCH: 58 sq. ft
DECK: 356 sq. ft
TOTAL: 1455 sq. ft

MEASUREMENTS CALCULATED BY V1Photos.COM ARE DEEMED HIGHLY RELIABLE BUT NOT GUARANTEED.



Disclaimer: Sizes and Dimensions are Approximate, Actual May Vary.



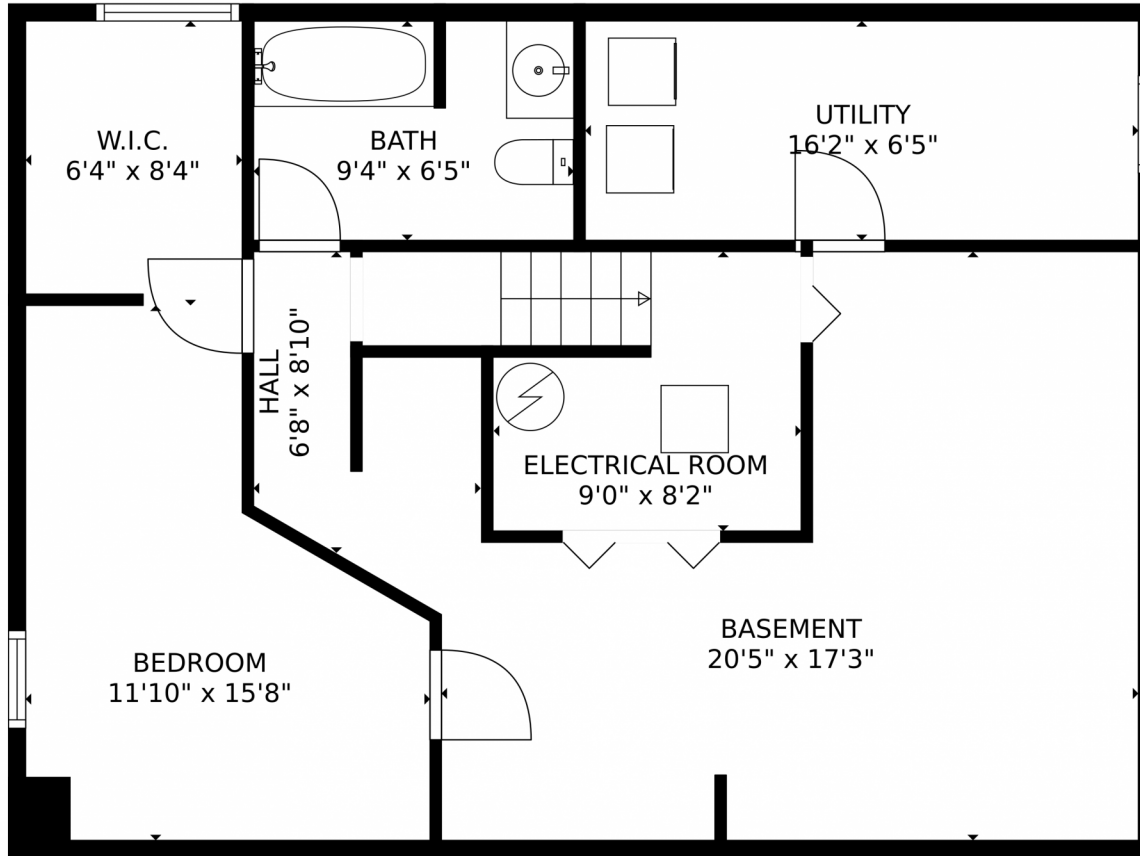
Tatyana Sturm
720-350-5909
tatyana@exitrealtydtc.com
<https://thestorckteam.com>



Scan code
for more
property
details



19492 E Monmouth Place, Centennial, CO 80015 – Basement



GROSS INTERNAL AREA
Below Ground: 590 sq. ft, FLOOR 2: 865 sq. ft
EXCLUDED AREAS: ELECTRICAL ROOM: 86 sq. ft
UTILITY: 104 sq. ft
PORCH: 58 sq. ft
DECK: 356 sq. ft
TOTAL: 1455 sq. ft

MEASUREMENTS CALCULATED BY V1Photos.COM ARE DEEMED HIGHLY RELIABLE BUT NOT GUARANTEED.



Disclaimer: Sizes and Dimensions are Approximate, Actual May Vary.



Tatyana Sturm
720-350-5909
tatyana@exitrealtydtc.com
<https://thestorckteam.com>

