



2404 South Orchard Street
 Lakewood, CO 80228
 COMMUNITY: Solterra



Single Family



3136 SQFT



4 Beds



3/1 Baths



2 Car



0.1 Acre



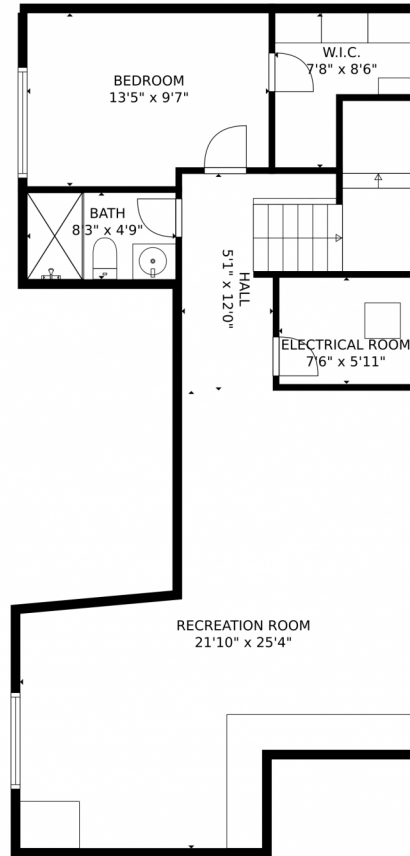
Bud Kinch
 303-818-8701
 budkinch@remax.net



Scan code
 for more
 property
 details



2404 South Orchard Street, Lakewood, CO 80228 – Lower Level



GROSS INTERNAL AREA
FLOOR 1: 795 sq. ft. FLOOR 2: 883 sq. ft.
FLOOR 3: 1182 sq. ft. EXCLUDED AREAS:
GARAGE: 487 sq. ft. PATIO: 218 sq. ft.
PORCH: 34 sq. ft.
TOTAL: 2861 sq. ft.

MEASUREMENTS CALCULATED BY V1Photos.COM ARE DEEMED HIGHLY RELIABLE BUT NOT GUARANTEED.



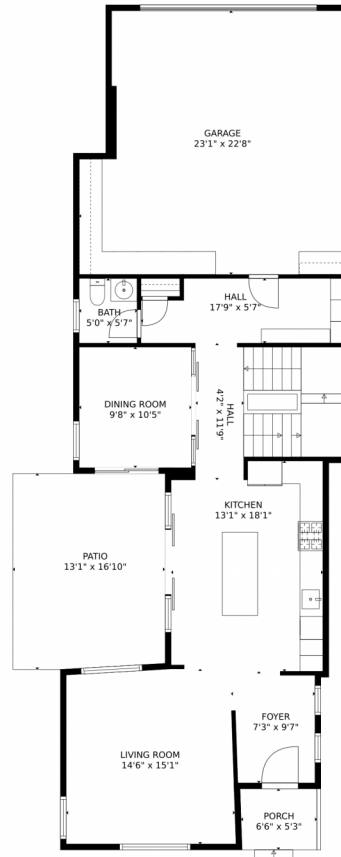
Disclaimer: Sizes and Dimensions are Approximate, Actual May Vary.



Bud Kinch
303-818-8701
budkinch@remax.net



2404 South Orchard Street, Lakewood, CO 80228 – Main Level



GROSS INTERNAL AREA
FLOOR 1: 795 sq. ft. FLOOR 2: 883 sq. ft.
FLOOR 3: 1182 sq. ft. EXCLUDED AREAS:
GARAGE: 487 sq. ft. PATIO: 218 sq. ft.
PORCH: 34 sq. ft.
TOTAL: 2861 sq. ft.

MEASUREMENTS CALCULATED BY V1Photos.COM ARE DEEMED HIGHLY RELIABLE BUT NOT GUARANTEED.



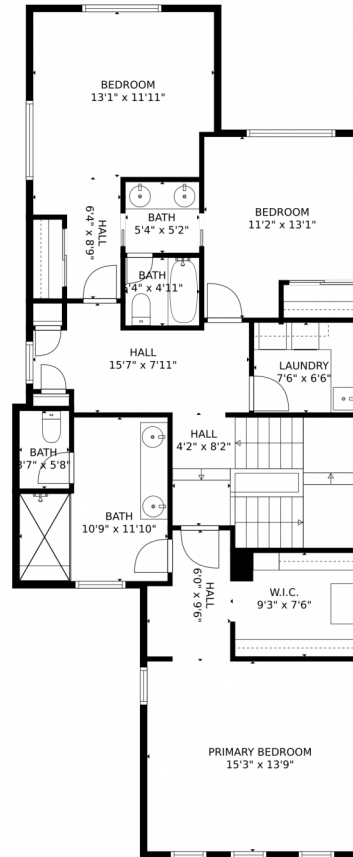
Disclaimer: Sizes and Dimensions are Approximate, Actual May Vary.



Bud Kinch
303-818-8701
budkinch@remax.net



2404 South Orchard Street, Lakewood, CO 80228 – Upper Level



GROSS INTERNAL AREA
FLOOR 1: 795 sq. ft. FLOOR 2: 883 sq. ft
FLOOR 3: 1182 sq. ft. EXCLUDED AREAS:
GARAGE: 487 sq. ft. PATIO: 218 sq. ft
PORCH: 34 sq. ft
TOTAL: 2861 sq. ft

MEASUREMENTS CALCULATED BY V1Photos.COM ARE DEEMED HIGHLY RELIABLE BUT NOT GUARANTEED.



Disclaimer: Sizes and Dimensions are Approximate, Actual May Vary.



Bud Kinch
303-818-8701
budkinch@remax.net

