

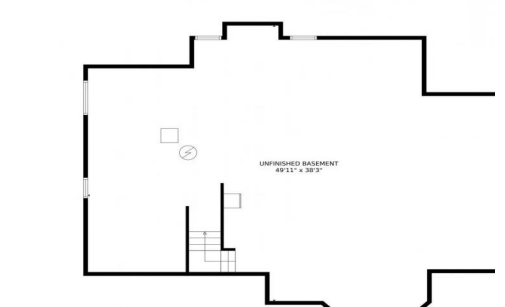


16571 E Powers Place
 Centennial, CO 80015
 COMMUNITY: Piney Creek

MLS # 6961149
 PRICE \$684,900



16571 East Powers Place, Centennial, CO 80015 - Lower Level



Single Family 4609 SQFT 4 Beds 3 Baths 3 Car 0.19 Acre

PROPERTY DETAILS

Welcome home to Piney Creek of Centennial, CO! This sprawling two-story layout really has everything for your every lifestyle need including a phenomenal entertainment area located on the main level offering two generously sized living spaces along with a massive kitchen and eat-in dining nook which is separate from the formal dining space; this layout was made for your entertainer's heart. A rare main level bedroom is found with an adjacent bathroom making for a phenomenal guest suite or home office space, the possibilities are endless. A perfectly placed laundry room completes the main level of the home located just inside the garage entryway with washer and dryer included. Next venture upstairs where you are welcomed by a massive owner's suite that comes complete with a private 5-piece bathroom, walk in closets, and a really cool feature of an additional seating area connected to the owner's suite that would make for a wonderful nursery or even a home office space if you work from home. Two sizable additional bedrooms are located on the upper level with the owner's suite for your peace of mind and security along with a secondary full bathroom centrally located to the upper level making it easily accessible day or night. You will love living in Piney Creek! This fantastic community is home to a full sized Olympic swimming pool along with a swim team and lessons. The community center also includes a lovely clubhouse that hosts a multitude of neighborhood



Tatyana Sturm
 720-350-5909
 tatyana@exitrealtydtc.com
 https://thestorckteam.com



events including an Easter Egg Hunt, Fourth of July Parade, Food Truck Nights, and of course a Christmas Light Competition. Take in a game of pickleball, tennis, or basketball with court reservations available. Residents of Piney Creek enjoy the award winning education system of Cherry Creek Schools. You can also walk to the Trails Recreations Center and Skate Park from your new home where you can enjoy a day of fun at the rec center or the skate park.



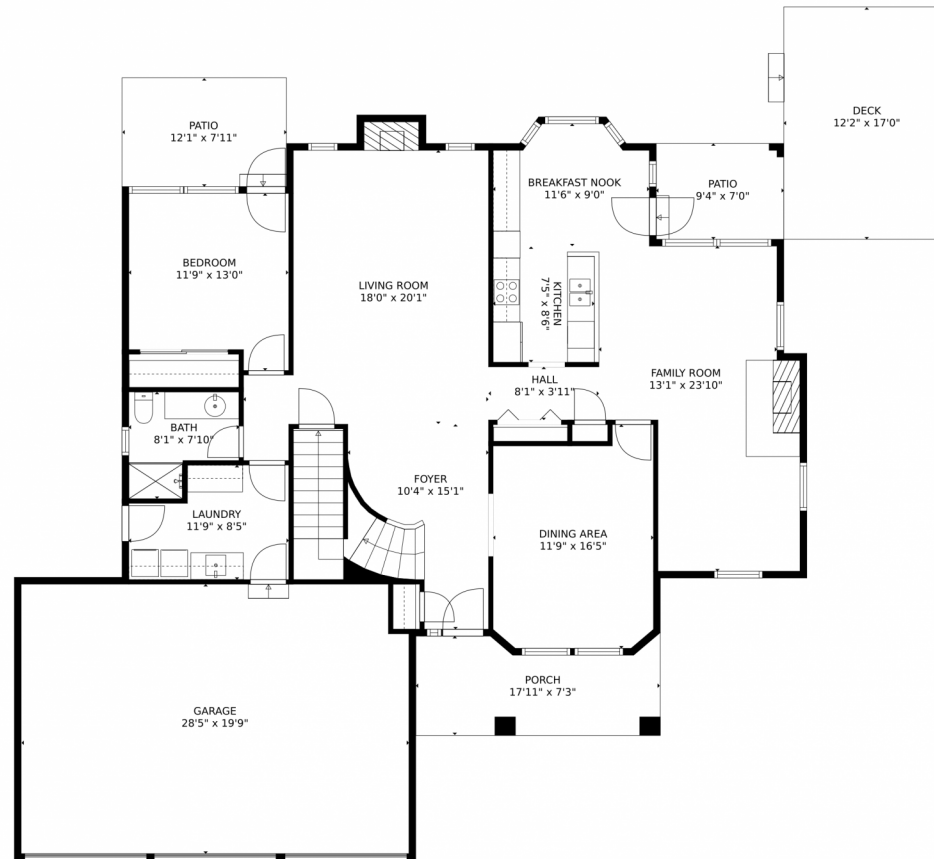
Tatyana Sturm
720-350-5909
tatyana@exitrealtydtc.com
<https://thestorckteam.com>



Scan code
for more
property
details



16571 E Powers Place, Centennial, CO 80015 – Main Level



GROSS INTERNAL AREA
FLOOR 1: 7 sq. ft, FLOOR 2: 1520 sq. ft
FLOOR 3: 1425 sq. ft, EXCLUDED AREAS:
UNFINISHED BASEMENT: 1539 sq. ft, GARAGE: 558 sq. ft
DECK: 208 sq. ft, PATIO: 162 sq. ft
PORCH: 116 sq. ft
TOTAL: 2952 sq. ft

MEASUREMENTS CALCULATED BY V1Photos.com ARE DEEMED HIGHLY RELIABLE BUT NOT GUARANTEED.



Disclaimer: Sizes and Dimensions are Approximate, Actual May Vary.



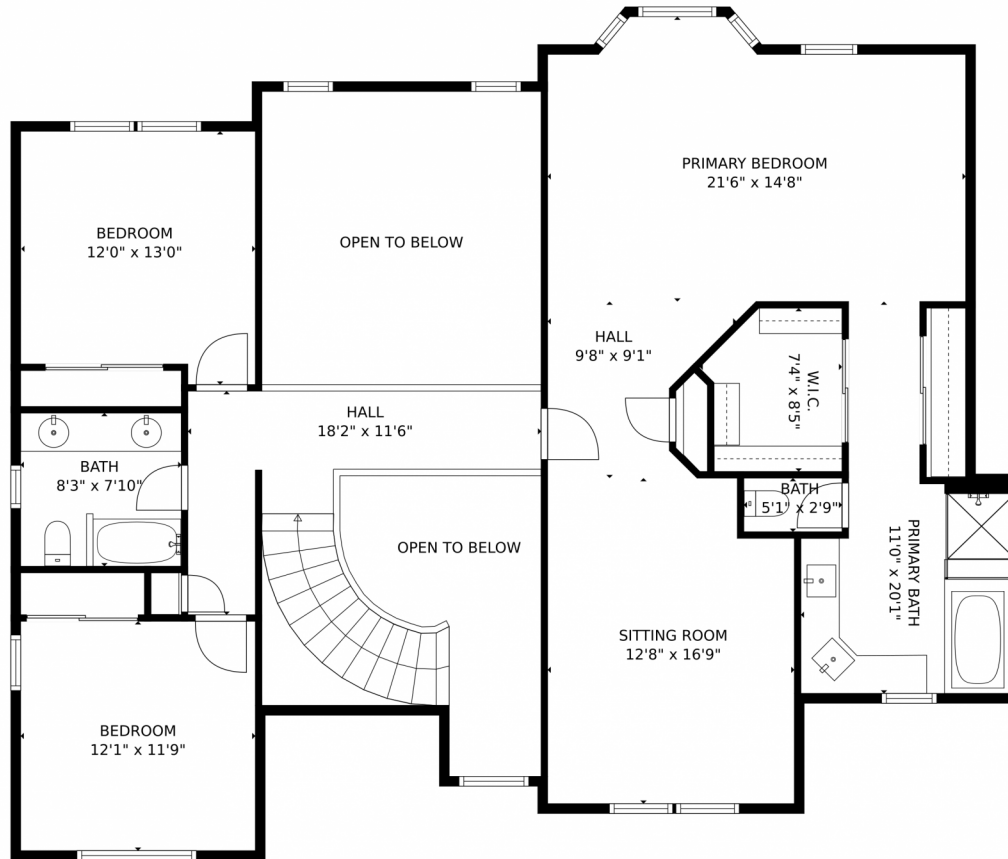
Tatyana Sturm
720-350-5909
tatyana@exitrealtydtc.com
<https://thestorckteam.com>



Scan code
for more
property
details



16571 E Powers Place, Centennial, CO 80015 – Upper Level



GROSS INTERNAL AREA
FLOOR 1: 7 sq. ft, FLOOR 2: 1520 sq. ft
FLOOR 3: 1425 sq. ft, EXCLUDED AREAS:
UNFINISHED BASEMENT: 1539 sq. ft, GARAGE: 558 sq. ft
DECK: 208 sq. ft, PATIO: 162 sq. ft
PORCH: 116 sq. ft
TOTAL: 2952 sq. ft
MEASUREMENTS CALCULATED BY V1Photos.COM ARE DEEMED HIGHLY RELIABLE BUT NOT GUARANTEED.



Disclaimer: Sizes and Dimensions are Approximate, Actual May Vary.



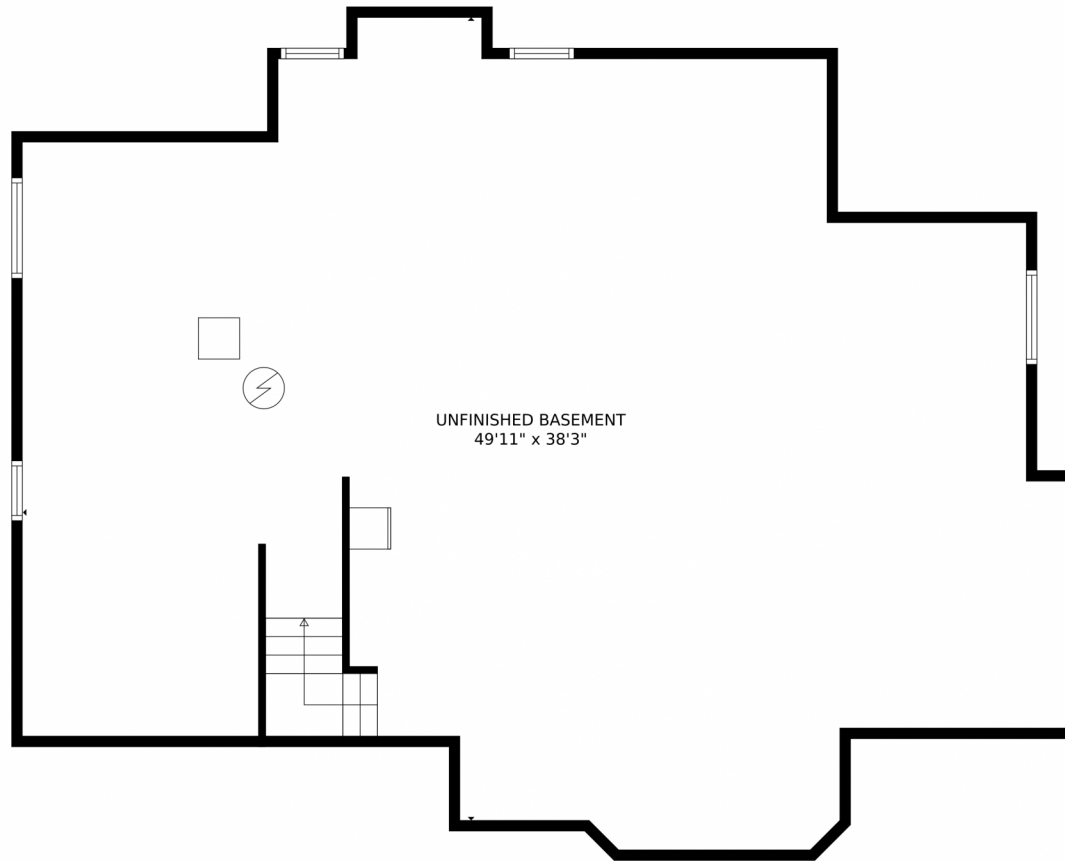
Tatyana Sturm
720-350-5909
tatyana@exitrealttydc.com
<https://thestorckteam.com>



Scan code
for more
property
details



16571 E Powers Place, Centennial, CO 80015 – Lower Level



GROSS INTERNAL AREA
FLOOR 1: 7 sq. ft, FLOOR 2: 1520 sq. ft
FLOOR 3: 1425 sq. ft, EXCLUDED AREAS:
UNFINISHED BASEMENT: 1539 sq. ft, GARAGE: 558 sq. ft
DECK: 208 sq. ft, PATIO: 162 sq. ft
PORCH: 116 sq. ft
TOTAL: 2952 sq. ft

MEASUREMENTS CALCULATED BY V1Photos.com ARE DEEMED HIGHLY RELIABLE BUT NOT GUARANTEED.



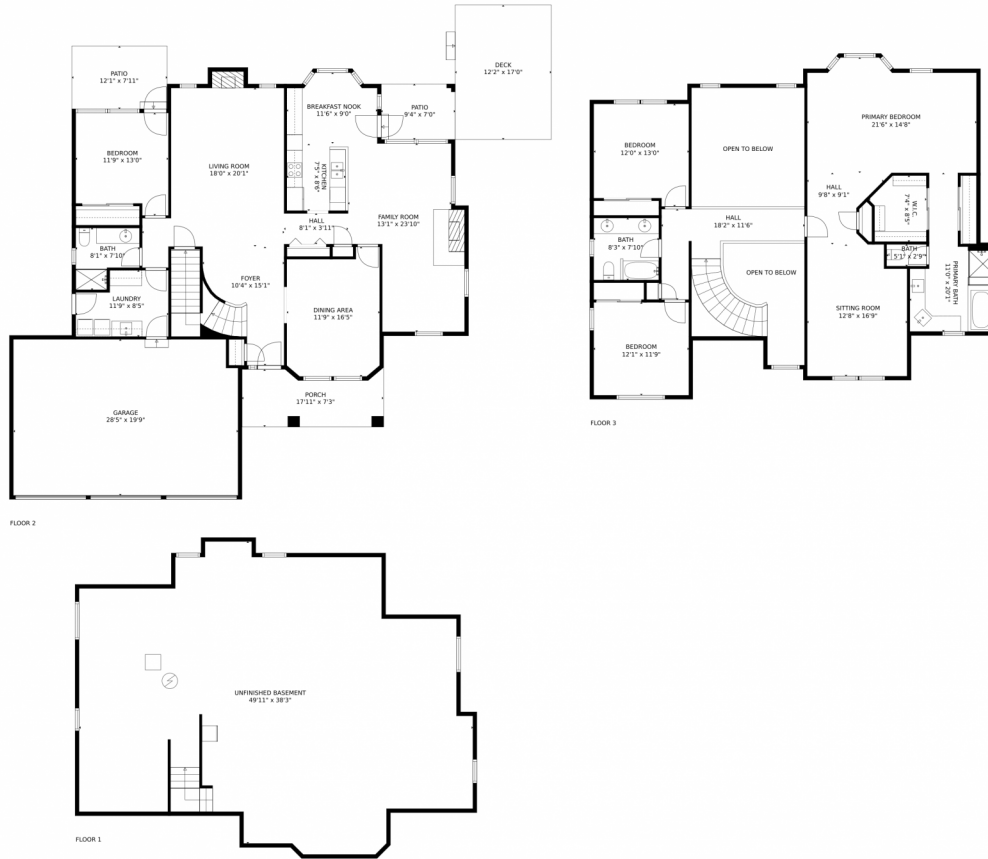
Disclaimer: Sizes and Dimensions are Approximate, Actual May Vary.



Tatyana Sturm
720-350-5909
tatyana@exitrealtydtc.com
<https://thestorckteam.com>



16571 E Powers Place, Centennial, CO 80015 – All Levels



GROSS INTERNAL AREA
FLOOR 1: 7 sq. ft, FLOOR 2: 1520 sq. ft
FLOOR 3: 1425 sq. ft, EXCLUDED AREAS:
UNFINISHED BASEMENT: 1539 sq. ft, GARAGE: 558 sq. ft
DECK: 208 sq. ft, PATIO: 162 sq. ft
PORCH: 116 sq. ft
TOTAL: 2952 sq. ft

MEASUREMENTS CALCULATED BY V1Photos.com ARE DEEMED HIGHLY RELIABLE BUT NOT GUARANTEED.



Disclaimer: Sizes and Dimensions are Approximate, Actual May Vary.



Tatyana Sturm
720-350-5909
tatyana@exitrealttydc.com
<https://thestorckteam.com>



Scan code
for more
property
details

