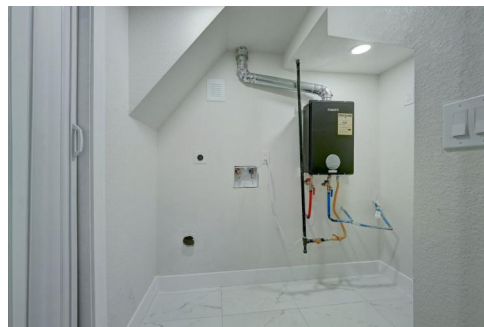
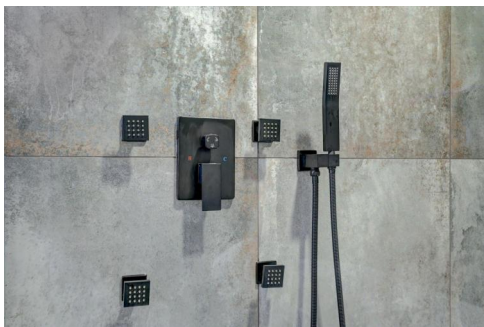
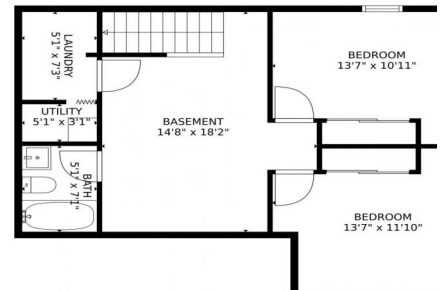




3045 RICHARD ALLEN Ct  
DENVER, CO 80205



3045 RICHARD ALLEN Ct, DENVER, CO 80205 - Basement



Single Family



2014 SQFT



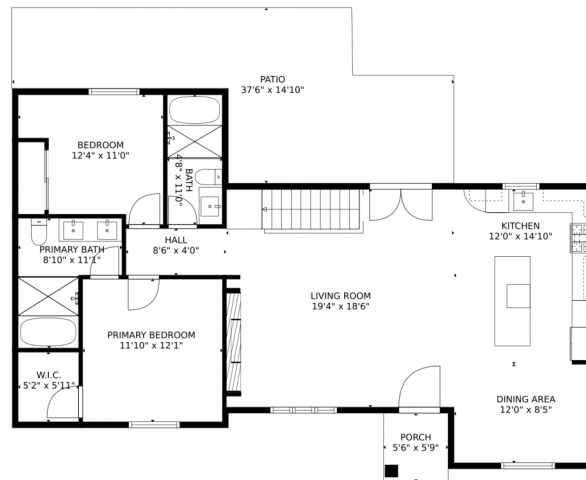
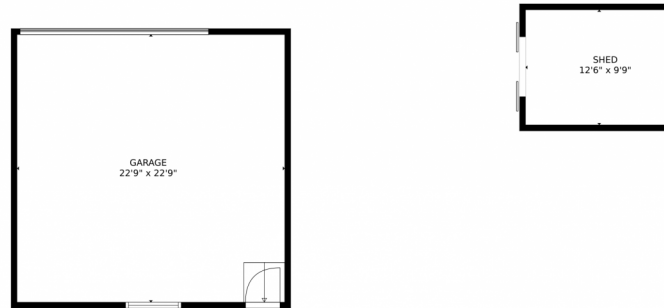
**Magali Fredrick**  
303-810-6761  
magali.fredrick@gmail.com



Scan code  
for more  
property  
details



# 3045 RICHARD ALLEN Ct, DENVER, CO 80205 – Main Level



GROSS INTERNAL AREA  
FLOOR 1: 615 sq. ft, FLOOR 2: 1247 sq. ft  
EXCLUDED AREAS: , GARAGE: 517 sq. ft  
PATIO: 362 sq. ft, PORCH: 32 sq. ft  
TOTAL: 1862 sq. ft

MEASUREMENTS CALCULATED BY V1Photos.com ARE DEEMED HIGHLY RELIABLE BUT NOT GUARANTEED.



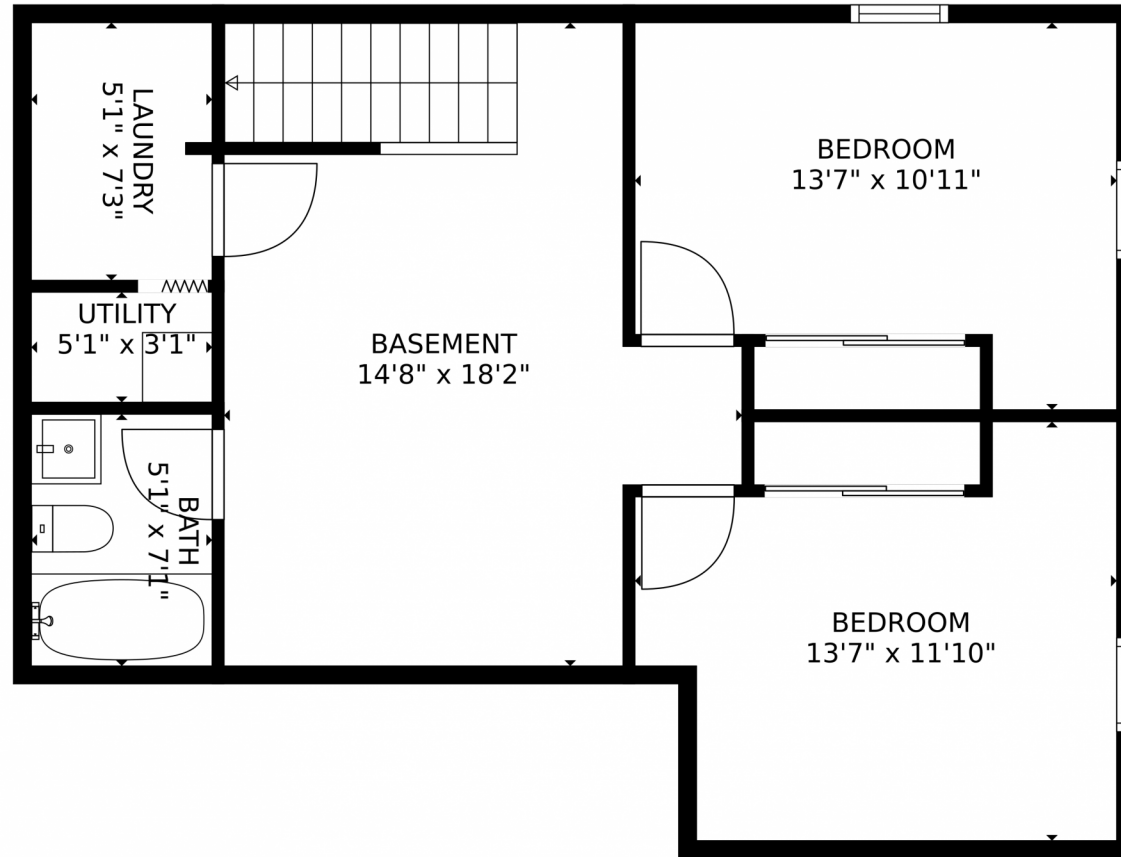
Disclaimer: Sizes and Dimensions are Approximate, Actual May Vary.



**Magali Fredrick**  
303-810-6761  
magali.fredrick@gmail.com



3045 RICHARD ALLEN Ct, DENVER, CO 80205 – Basement



GROSS INTERNAL AREA  
FLOOR 1: 615 sq. ft, FLOOR 2: 1247 sq. ft  
EXCLUDED AREAS: , GARAGE: 517 sq. ft  
PATIO: 362 sq. ft, PORCH: 32 sq. ft  
TOTAL: 1862 sq. ft  
MEASUREMENTS CALCULATED BY V1Photos.COM ARE DEEMED HIGHLY RELIABLE BUT NOT GUARANTEED.

Disclaimer: Sizes and Dimensions are Approximate, Actual May Vary.



**Magali Fredrick**  
303-810-6761  
magali.fredrick@gmail.com



# 3045 RICHARD ALLEN Ct, DENVER, CO 80205 – All Levels



GROSS INTERNAL AREA  
FLOOR 1: 615 sq. ft. FLOOR 2: 1247 sq. ft  
EXCLUDED AREAS: , GARAGE: 517 sq. ft  
PATIO: 362 sq. ft. PORCH: 32 sq. ft  
TOTAL: 1862 sq. ft

MEASUREMENTS CALCULATED BY V1Photos.com ARE DEEMED HIGHLY RELIABLE BUT NOT GUARANTEED.



Disclaimer: Sizes and Dimensions are Approximate, Actual May Vary.



**Magali Fredrick**  
303-810-6761  
magali.fredrick@gmail.com



Scan code  
for more  
property  
details