



4250 South Granby Way, Unit F
 Aurora, CO 80014
 COMMUNITY: SUMMIT PARK

PRICE \$430,000



Townhouse 1274 SQFT 2 Beds 2/1 Baths 2 Car 0.03 Acre

PROPERTY DETAILS

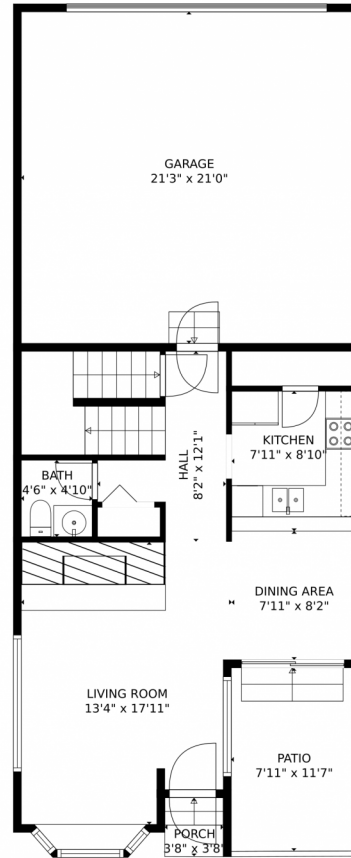
Sweetly updated town home in Desirable Summit Park! End unit with spacious two car garage. New appliances, flooring and windows on the main and upper level. Double Suites upstairs and Very Spacious!!!



MARK ZumTobel
 303-909-8808
 ZUM@REALTOR.COM



4250 South Granby Way, Unit F, Aurora, CO 80014 – Main Level



GROSS INTERNAL AREA
FLOOR 1: 7 sq. ft., FLOOR 2: 548 sq. ft.
FLOOR 3: 688 sq. ft., EXCLUDED AREAS:
UNFINISHED BASEMENT: 525 sq. ft., GARAGE: 446 sq. ft.
PATIO: 92 sq. ft., PORCH: 14 sq. ft.
TOTAL: 1243 sq. ft.

MEASUREMENTS CALCULATED BY V1Photos.com ARE DEEMED HIGHLY RELIABLE BUT NOT GUARANTEED.



Disclaimer: Sizes and Dimensions are Approximate, Actual May Vary.



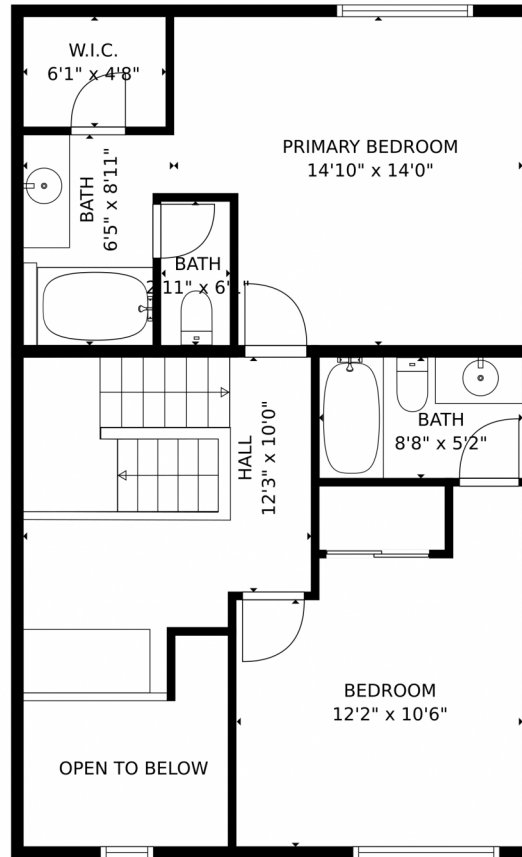
MARK ZumTobel
303-909-8808
ZUM@REALTOR.COM



Scan code
for more
property
details



4250 South Granby Way, Unit F, Aurora, CO 80014 – Upper Level



GROSS INTERNAL AREA
FLOOR 1: 7 sq. ft., FLOOR 2: 548 sq. ft.
FLOOR 3: 688 sq. ft., EXCLUDED AREAS:
UNFINISHED BASEMENT: 525 sq. ft., GARAGE: 446 sq. ft.
PATIO: 92 sq. ft., PORCH: 14 sq. ft.
TOTAL: 1243 sq. ft.
MEASUREMENTS CALCULATED BY V1Photos.com ARE DEEMED HIGHLY RELIABLE BUT NOT GUARANTEED.

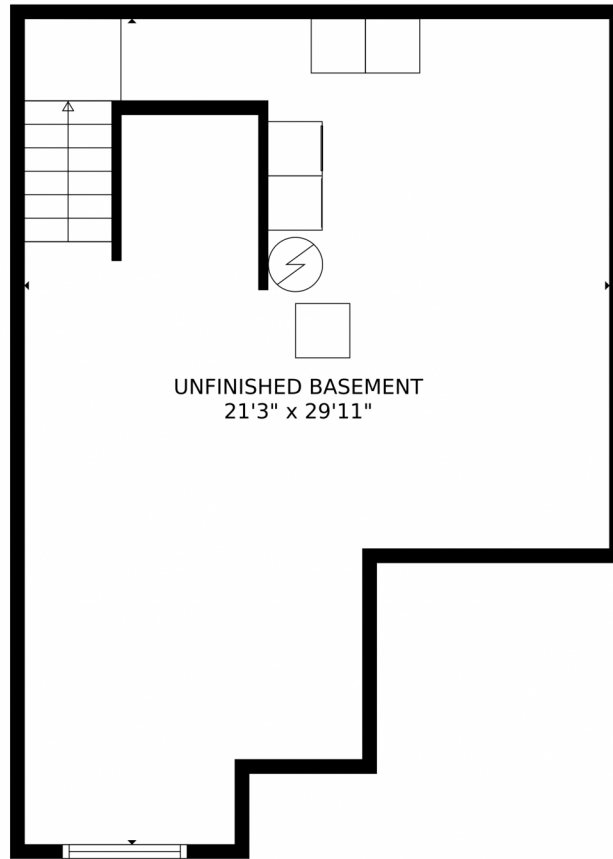


Disclaimer: Sizes and Dimensions are Approximate, Actual May Vary.



MARK ZumTobel
303-909-8808
ZUM@REALTOR.COM





UNFINISHED BASEMENT
21'3" x 29'11"

GROSS INTERNAL AREA
FLOOR 1: 7 sq. ft., FLOOR 2: 548 sq. ft.
FLOOR 3: 688 sq. ft., EXCLUDED AREAS:
UNFINISHED BASEMENT: 525 sq. ft., GARAGE: 446 sq. ft.
PATIO: 92 sq. ft., PORCH: 14 sq. ft.
TOTAL: 1243 sq. ft.
MEASUREMENTS CALCULATED BY V1Photos.com ARE DEEMED HIGHLY RELIABLE BUT NOT GUARANTEED.



Disclaimer: Sizes and Dimensions are Approximate, Actual May Vary.



MARK ZumTobel
303-909-8808
ZUM@REALTOR.COM



4250 South Granby Way, Unit F, Aurora, CO 80014 – All Levels



FLOOR 1

FLOOR 2

FLOOR 3

GROSS INTERNAL AREA
 FLOOR 1: 7 sq. ft., FLOOR 2: 548 sq. ft.
 FLOOR 3: 688 sq. ft., EXCLUDED AREAS:
 UNFINISHED BASEMENT: 525 sq. ft., GARAGE: 446 sq. ft.
 PATIO: 92 sq. ft., PORCH: 14 sq. ft.
 TOTAL: 1243 sq. ft.

MEASUREMENTS CALCULATED BY V1Photos.com ARE DEEMED HIGHLY RELIABLE BUT NOT GUARANTEED.



Disclaimer: Sizes and Dimensions are Approximate, Actual May Vary.



MARK ZumTobel
 303-909-8808
 ZUM@REALTOR.COM



Scan code for more property details