



16343 Columbine Street
 Thornton, CO 80602
 COMMUNITY: Morrison



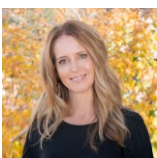
16343 Columbine Street, Thornton, CO 80602 - Main Level



Single Family 2939 SQFT 5 Beds 4/1 Baths 3 Car 0.19 Acre

PROPERTY DETAILS

Gorgeous Next Gen Home w/ in-law suite featuring separate entrance is nestled in the desirable Orchard Farms neighborhood. Neighborhood boasts paths & parks with many organized neighborhood activities. Open the door to luxury plan flooring on the entire main level. Inviting family room with custom gas fireplace & tons of natural light. Stunning open concept kitchen with tons of cabinet space, granite counters, pendant lights, S/S appliances & pantry. Huge island space with bar seating. Separate dining room opens to covered patio perfect for enjoying all times of year. Separate "next gen" apartment features family room, bedroom, full bath, w/d hookups and kitchenette with refrigerator/microwave. Upstairs features large primary suite with attached 5 pc bathroom & enormous walk-in closet. Office nook, 3 additional bedrooms, 2 full baths & laundry room complete this spacious upper level. Stunning yard with tons of mature trees, beautiful flower plantings and professional landscaping. Property features 2 furnaces/central AC units and a whole house humidifier for perfect climate control. 3 car tandem garage with amazing storage, leased solar and unfinished basement awaits your dreams.



Terri Ellerington

303-929-8116

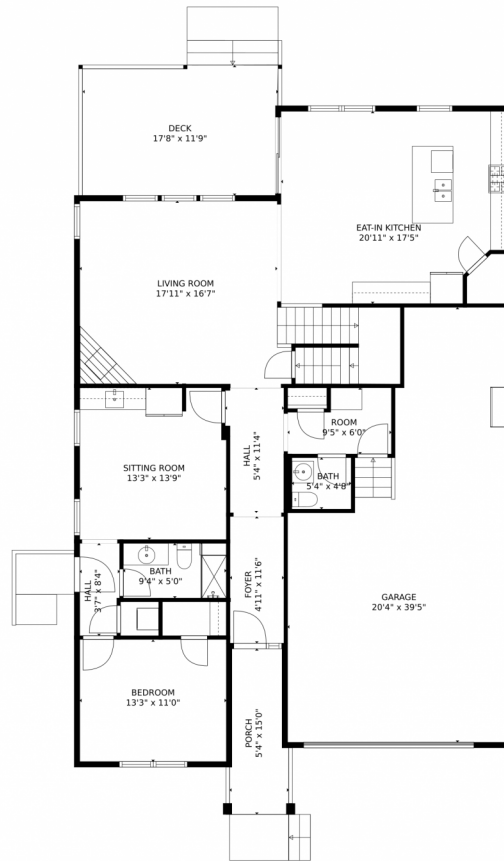
terri@elevated-team.com

<https://www.remax.com/real-estate-agents/terri-ellerington-louisville-co/10205130>

Scan code
for more
property
details



16343 Columbine Street, Thornton, CO 80602 – Main Level



GROSS INTERNAL AREA
Below Ground: 0 sq. ft, FLOOR 2: 1414 sq. ft, FLOOR 3: 1408 sq. ft
EXCLUDED AREAS: UNFINISHED BASEMENT: 1313 sq. ft
PORCH: 73 sq. ft
DECK: 204 sq. ft
GARAGE: 633 sq. ft
TOTAL: 2822 sq. ft

MEASUREMENTS CALCULATED BY V1Photos.com ARE DEEMED HIGHLY RELIABLE BUT NOT GUARANTEED.



Disclaimer: Sizes and Dimensions are Approximate, Actual May Vary.



Terri Ellerington

303-929-8116

terri@elevated-team.com

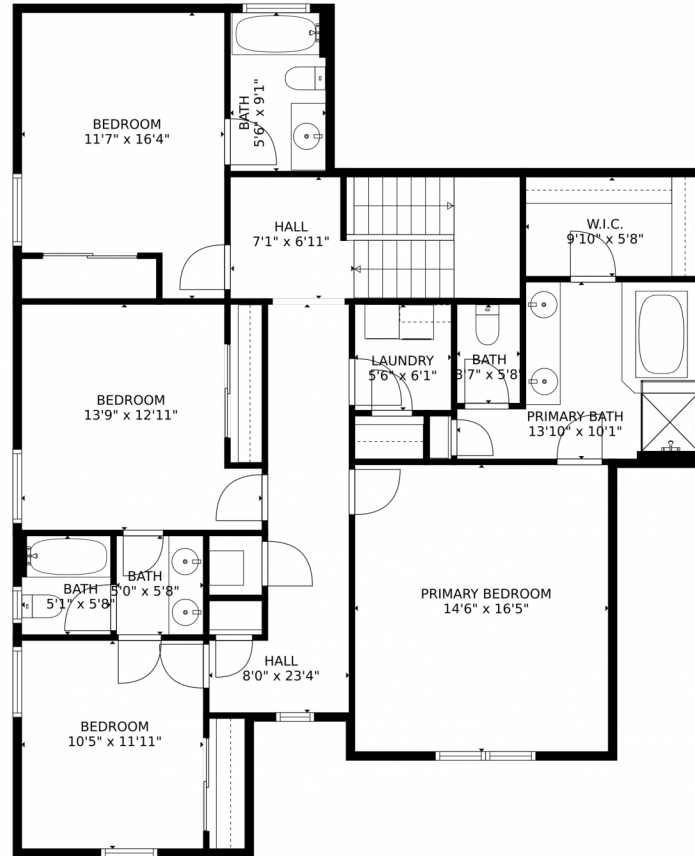
<https://www.remax.com/real-estate-agents/terri-ellerington-louisville-co/102051301>



Scan code
for more
property
details



16343 Columbine Street, Thornton, CO 80602 – Second Level



GROSS INTERNAL AREA
Below Ground: 0 sq. ft. FLOOR 2: 1414 sq. ft. FLOOR 3: 1408 sq. ft.
EXCLUDED AREAS: UNFINISHED BASEMENT: 1313 sq. ft.
PORCH: 73 sq. ft.
DECK: 204 sq. ft.
GARAGE: 633 sq. ft.
TOTAL: 2822 sq. ft.
MEASUREMENTS CALCULATED BY V1Photos.COM ARE DEEMED HIGHLY RELIABLE BUT NOT GUARANTEED.



Disclaimer: Sizes and Dimensions are Approximate, Actual May Vary.

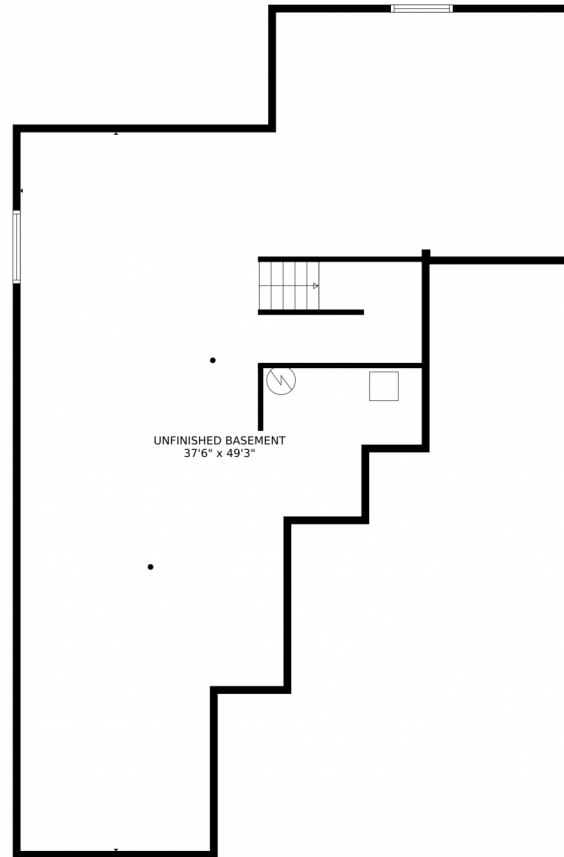


Terri Ellerington
303-929-8116
terri@elevated-team.com
<https://www.remax.com/real-estate-agents/terri-ellerington-louisville-co/102051301>



Scan code
for more
property
details





GROSS INTERNAL AREA
Below Ground: 0 sq. ft, FLOOR 2: 1414 sq. ft, FLOOR 3: 1408 sq. ft
EXCLUDED AREAS: UNFINISHED BASEMENT: 1313 sq. ft
PORCH: 73 sq. ft
DECK: 204 sq. ft
GARAGE: 633 sq. ft
TOTAL: 2822 sq. ft

MEASUREMENTS CALCULATED BY V1Photos.com ARE DEEMED HIGHLY RELIABLE BUT NOT GUARANTEED.



Disclaimer: Sizes and Dimensions are Approximate, Actual May Vary.



Terri Ellerington

303-929-8116

terri@elevated-team.com

<https://www.remax.com/real-estate-agents/terri-ellerington-louisville-co/102051301>



Scan code
for more
property
details



16343 Columbine Street, Thornton, CO 80602 – All Levels



GROSS INTERNAL AREA
Below Ground: 0 sq. ft. FLOOR 2: 1414 sq. ft. FLOOR 3: 1408 sq. ft.
EXCLUDED AREAS: UNFINISHED BASEMENT: 1313 sq. ft.
PORCH: 73 sq. ft.
DECK: 204 sq. ft.
GARAGE: 633 sq. ft.
TOTAL: 2822 sq. ft.

MEASUREMENTS CALCULATED BY V1Photos.COM ARE DEEMED HIGHLY RELIABLE BUT NOT GUARANTEED.



Disclaimer: Sizes and Dimensions are Approximate, Actual May Vary.



Terri Ellerington

303-929-8116

terri@elevated-team.com

<https://www.remax.com/real-estate-agents/terri-ellerington-louisville-co/102051301>



Scan code
for more
property
details

