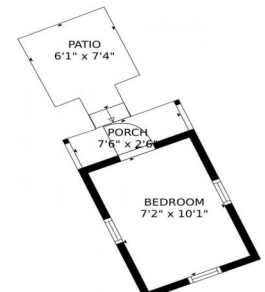




27802 Shadow Mountain Drive, Conifer, CO 80433 - Out Building



Single Family
 1043 SQFT
 2 Beds
 1 Baths
 1 Acre

PROPERTY DETAILS

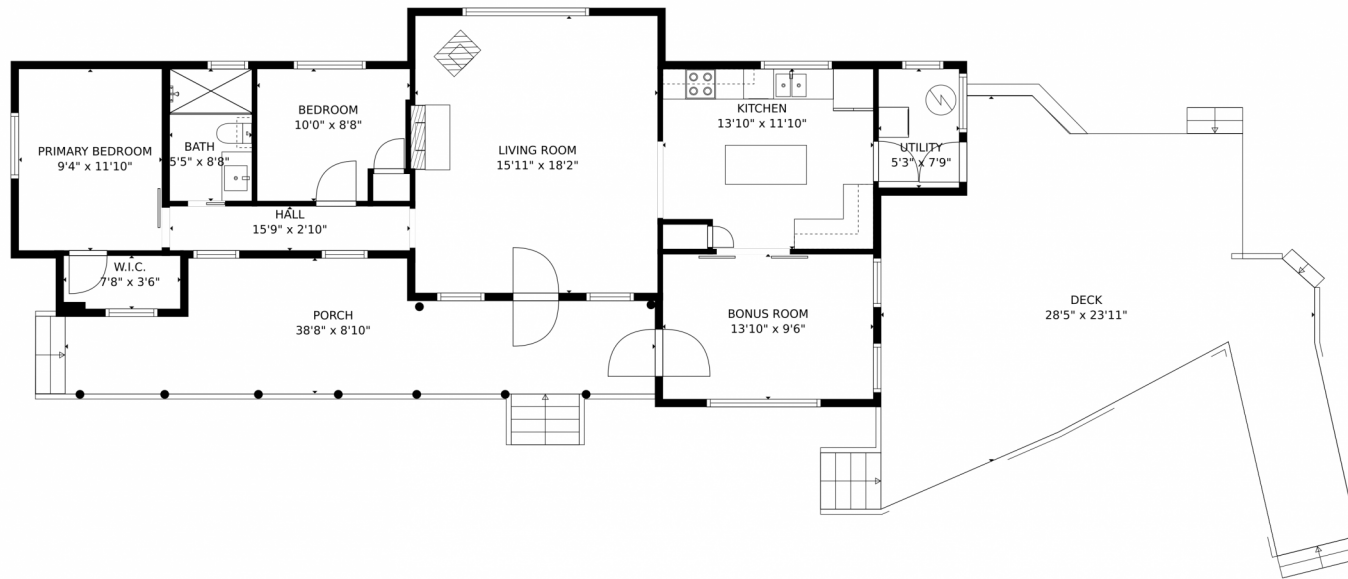
Location, location, location! Charming and quaint true mountain cabin nestled in the woods along North Turkey Creek. This home is in the the ideal location for a year-round home, second/vacation home, or rental. Located on a bus route with the roads first to be plowed, less than an hour from DIA, close to Flying J Ranch Open Space, Maxwell Falls, restaurants, groceries, schools, and 15 minutes to downtown Evergreen.



Carrie Baldwin
 303-885-5118
 cjb@carriebaldwin.com



27802 Shadow Mountain Drive, Conifer, CO 80433 – 1st Floor



GROSS INTERNAL AREA
FLOOR 1: 974 sq. ft, FLOOR 2: 73 sq. ft
EXCLUDED AREAS: , DECK: 544 sq. ft
PORCH: 296 sq. ft, PATIO: 42 sq. ft
TOTAL: 1047 sq. ft

MEASUREMENTS CALCULATED BY V1Photos.com ARE DEEMED HIGHLY RELIABLE BUT NOT GUARANTEED.

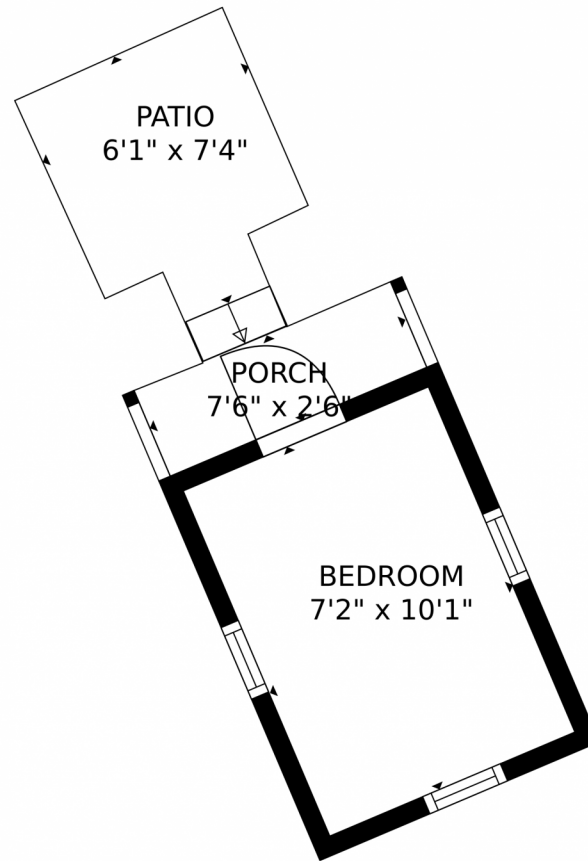


Disclaimer: Sizes and Dimensions are Approximate, Actual May Vary.



Carrie Baldwin
303-885-5118
cjb@carriebaldwin.com





GROSS INTERNAL AREA
FLOOR 1: 974 sq. ft., FLOOR 2: 73 sq. ft.
EXCLUDED AREAS: , DECK: 544 sq. ft.
PORCH: 296 sq. ft., PATIO: 42 sq. ft.
TOTAL: 1047 sq. ft.

MEASUREMENTS CALCULATED BY V1Photos.com ARE DEEMED HIGHLY RELIABLE BUT NOT GUARANTEED.



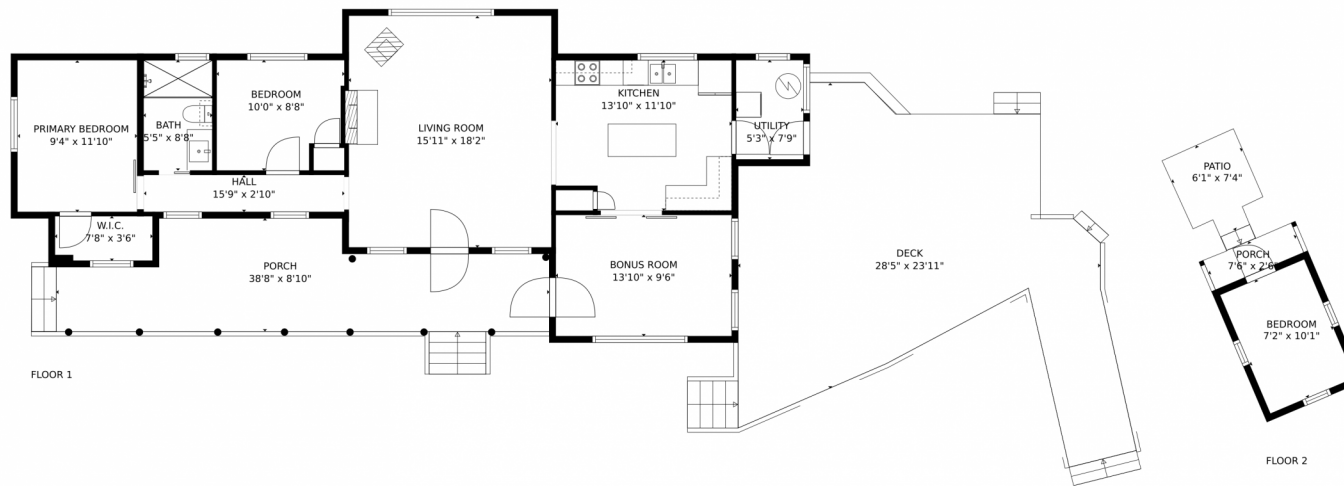
Disclaimer: Sizes and Dimensions are Approximate, Actual May Vary.



Carrie Baldwin
303-885-5118
cjb@carriebaldwin.com



27802 Shadow Mountain Drive, Conifer, CO 80433 – All Floors



GROSS INTERNAL AREA
FLOOR 1: 974 sq. ft., FLOOR 2: 73 sq. ft.
EXCLUDED AREAS: , DECK: 544 sq. ft.
PORCH: 296 sq. ft., PATIO: 42 sq. ft.
TOTAL: 1047 sq. ft.

MEASUREMENTS CALCULATED BY V1Photos.com ARE DEEMED HIGHLY RELIABLE BUT NOT GUARANTEED.

Disclaimer: Sizes and Dimensions are Approximate, Actual May Vary.



Carrie Baldwin
303-885-5118
cjb@carriebaldwin.com

