



7051 Roaring Fork Trail
Boulder, CO 80301



Single Family



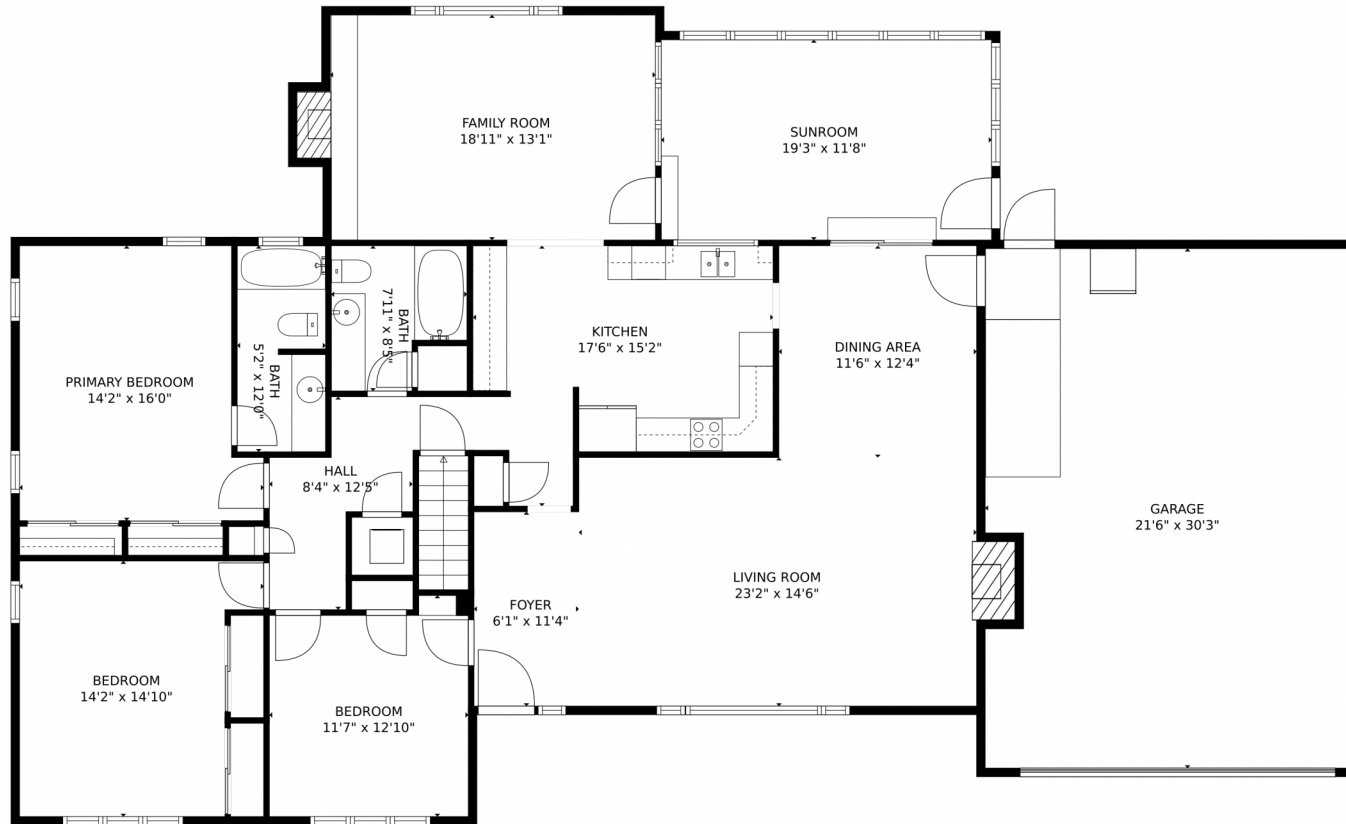
3244 SQFT



Linda Nehls
303-668-7670
linda@lindanehls.com



7051 Roaring Fork Trail, Boulder, CO 80301 – Main Level



GROSS INTERNAL AREA
Below Ground: 721 sq. ft, FLOOR 2: 2153 sq. ft
EXCLUDED AREAS: ELECTRICAL ROOM: 81 sq. ft
UNDEFINED: 6 sq. ft
GARAGE: 637 sq. ft
FIREPLACE: 14 sq. ft
TOTAL: 2874 sq. ft

MEASUREMENTS CALCULATED BY V1Photos.COM ARE DEEMED HIGHLY RELIABLE BUT NOT GUARANTEED.



Disclaimer: Sizes and Dimensions are Approximate, Actual May Vary.



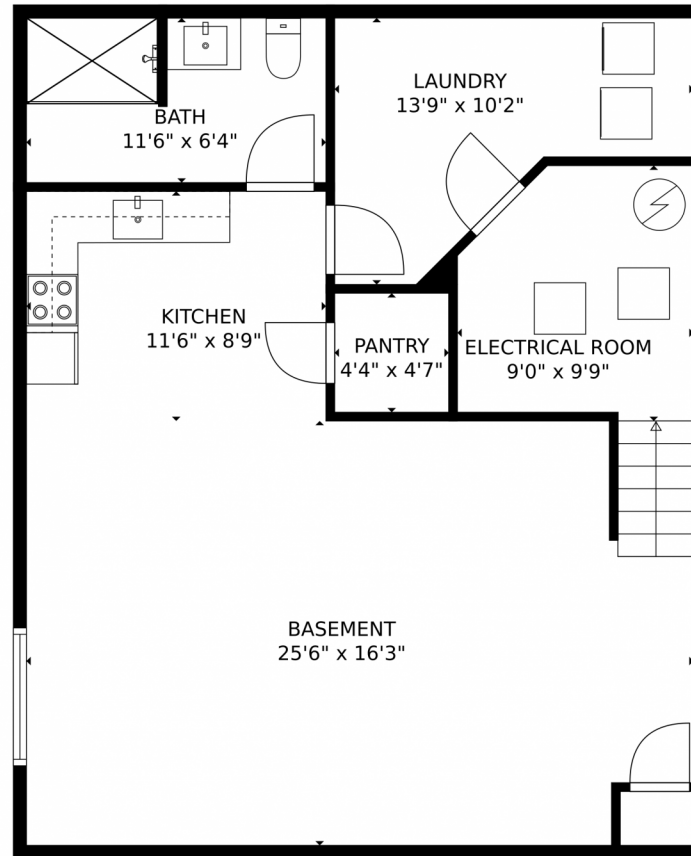
Linda Nehls
303-668-7670
linda@lindanehls.com



Scan code
for more
property
details



7051 Roaring Fork Trail, Boulder, CO 80301 – Lower Level



GROSS INTERNAL AREA
Below Ground: 721 sq. ft, FLOOR 2: 2153 sq. ft
EXCLUDED AREAS: ELECTRICAL ROOM: 81 sq. ft
UNDEFINED: 6 sq. ft
GARAGE: 637 sq. ft
FIREPLACE: 14 sq. ft
TOTAL: 2874 sq. ft

MEASUREMENTS CALCULATED BY V1Photos.com ARE DEEMED HIGHLY RELIABLE BUT NOT GUARANTEED.



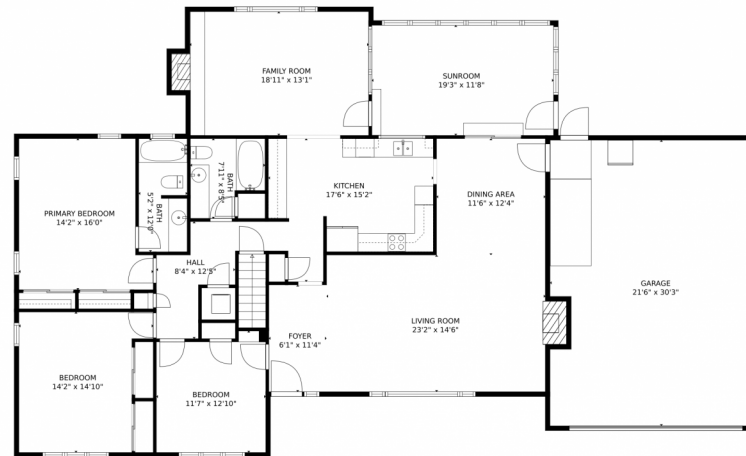
Disclaimer: Sizes and Dimensions are Approximate, Actual May Vary.



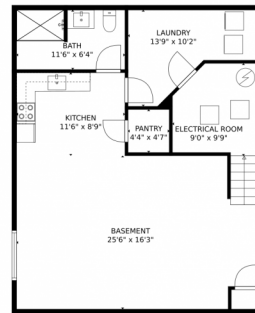
Linda Nehls
303-668-7670
linda@lindanehls.com



7051 Roaring Fork Trail, Boulder, CO 80301 – all levels



FLOOR 2



FLOOR 1

GROSS INTERNAL AREA
Below Ground: 721 sq. ft, FLOOR 2: 2153 sq. ft
EXCLUDED AREAS: ELECTRICAL ROOM: 81 sq. ft
UNDEFINED: 6 sq. ft
GARAGE: 637 sq. ft
FIREPLACE: 14 sq. ft
TOTAL: 2874 sq. ft

MEASUREMENTS CALCULATED BY V1Photos.COM ARE DEEMED HIGHLY RELIABLE BUT NOT GUARANTEED.



Disclaimer: Sizes and Dimensions are Approximate, Actual May Vary.



Linda Nehls
303-668-7670
linda@lindanehls.com



Scan code
for more
property
details

