



5370 Carr Street  
Arvada, CO 80002



Commercial



5082 SQFT



0.45 Acre

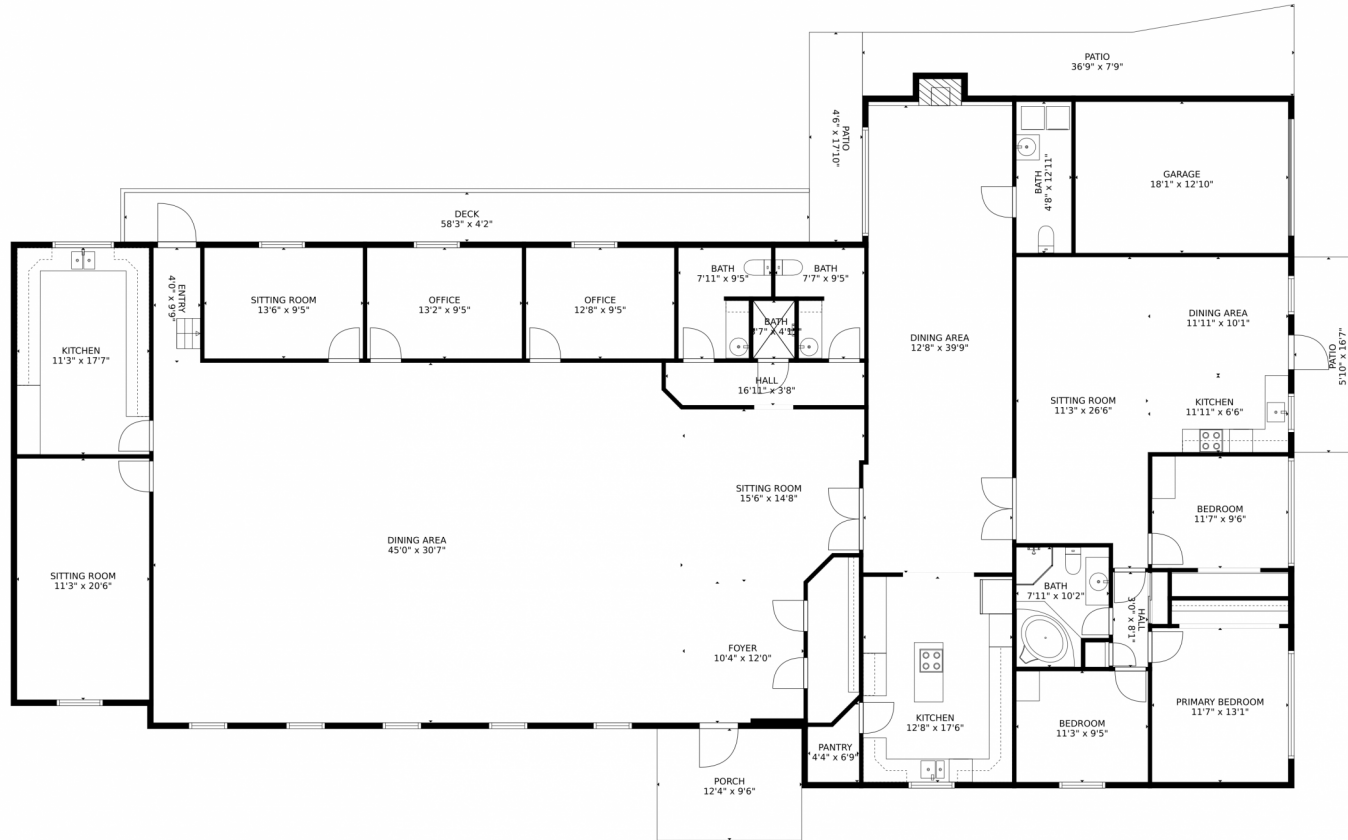


Salina Tornabene  
303-437-7200  
salina@spiritbearrealty.com



Scan code  
for more  
property  
details

# 5370 Carr Street, Arvada, CO 80002 – Main Level



GROSS INTERNAL AREA  
Below Ground: 0 sq. ft, FLOOR 2: 4756 sq. ft.  
EXCLUDED AREAS: UNFINISHED BASEMENT: 2768 sq. ft, GARAGE: 233 sq. ft, PORCH: 117 sq. ft.  
PATIO: 383 sq. ft, DECK: 244 sq. ft, FIREPLACE: 5 sq. ft.  
TOTAL: 4756 sq. ft.  
MEASUREMENTS CALCULATED BY V1Photos.COM ARE DEEMED HIGHLY RELIABLE BUT NOT GUARANTEED.



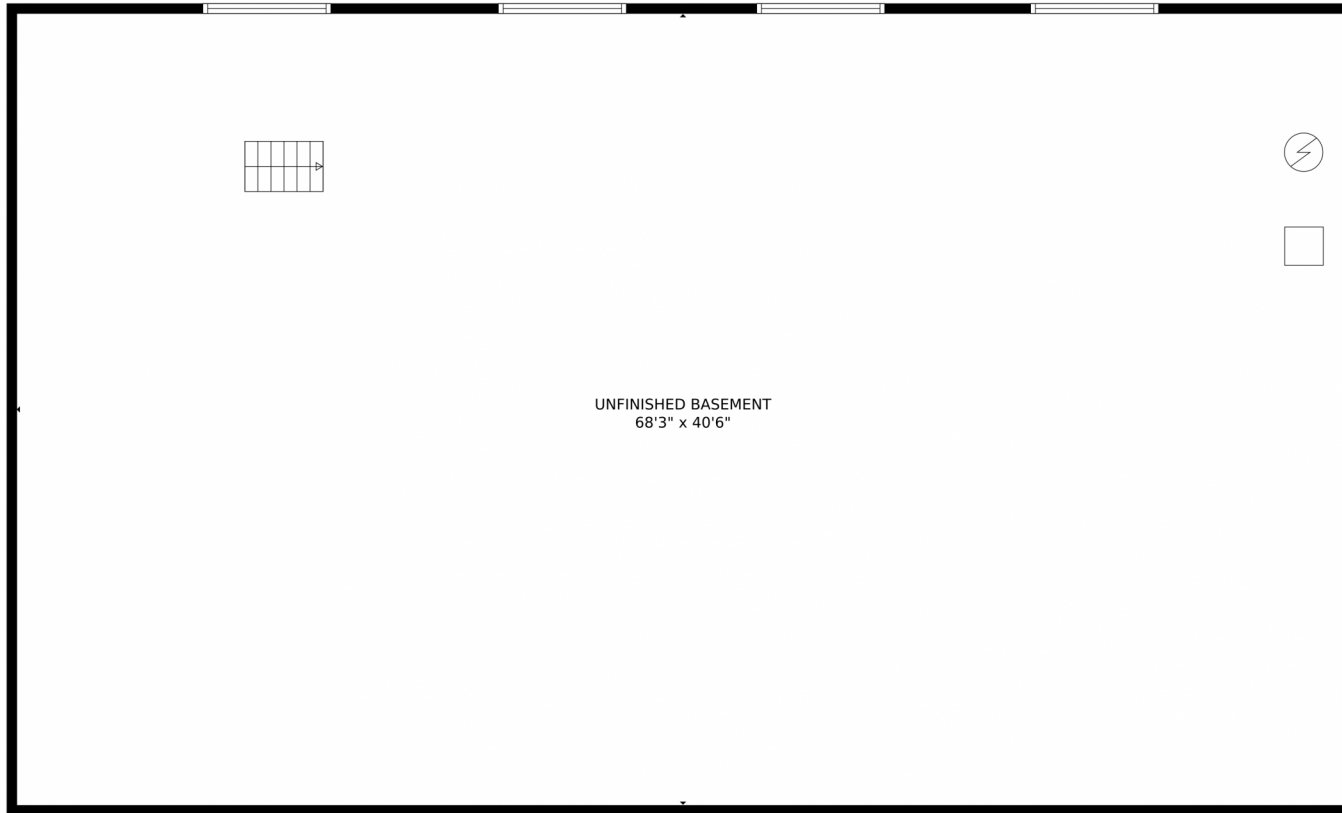
Disclaimer: Sizes and Dimensions are Approximate, Actual May Vary.



Salina Tornabene  
303-437-7200  
salina@spiritbearrealty.com



# 5370 Carr Street, Arvada, CO 80002 – Crawl Space



GROSS INTERNAL AREA  
Below Ground: 0 sq. ft, FLOOR 2: 4756 sq. ft  
EXCLUDED AREAS: UNFINISHED BASEMENT: 2768 sq. ft, GARAGE: 233 sq. ft, PORCH: 117 sq. ft,  
PATIO: 383 sq. ft, DECK: 244 sq. ft, FIREPLACE: 5 sq. ft  
TOTAL: 4756 sq. ft  
MEASUREMENTS CALCULATED BY V1Photos.com ARE DEEMED HIGHLY RELIABLE BUT NOT GUARANTEED.



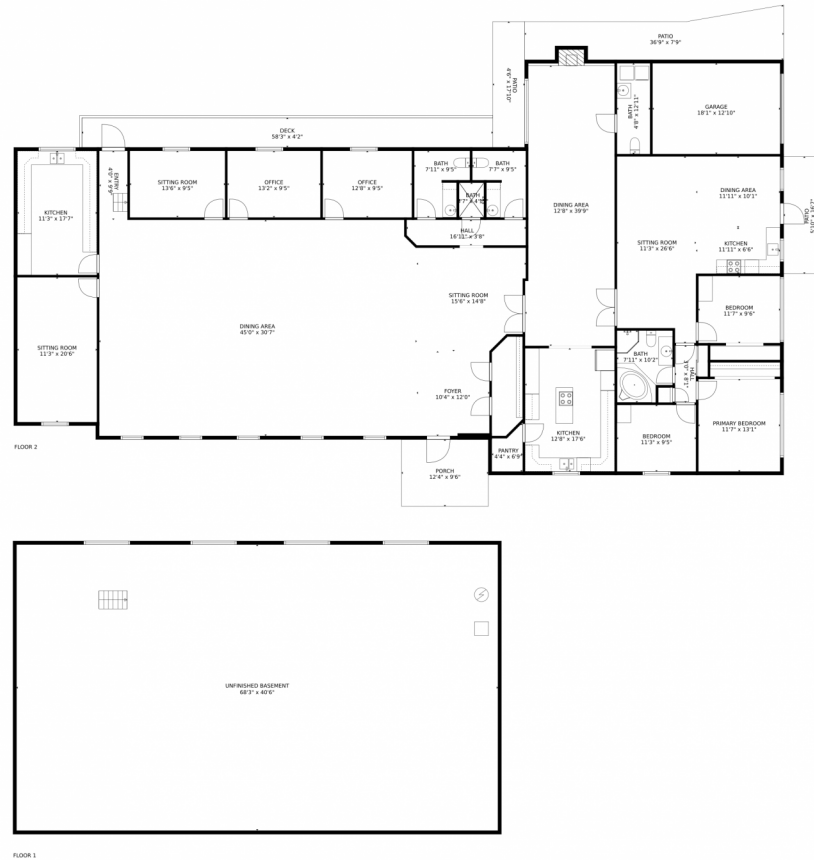
Disclaimer: Sizes and Dimensions are Approximate, Actual May Vary.



**Salina Tornabene**  
303-437-7200  
salina@spiritbearrealty.com



# 5370 Carr Street, Arvada, CO 80002 – All Levels



GROSS INTERNAL AREA  
Below Ground: 0 sq. ft, FLOOR 2: 4756 sq. ft  
EXCLUDED AREAS: UNFINISHED BASEMENT: 2768 sq. ft, GARAGE: 233 sq. ft, PORCH: 117 sq. ft,  
PATIO: 383 sq. ft, DECK: 244 sq. ft, FIREPLACE: 5 sq. ft  
TOTAL: 4756 sq. ft  
MEASUREMENTS CALCULATED BY V1Photos.com ARE DEEMED HIGHLY RELIABLE BUT NOT GUARANTEED.



Disclaimer: Sizes and Dimensions are Approximate, Actual May Vary.



Salina Tornabene  
303-437-7200  
salina@spiritbearrealty.com



Scan code  
for more  
property  
details

