



Single Family



4982 SQFT



3 Beds



4 Baths



3 Car



1.3 Acre

PROPERTY DETAILS

A RANCH Hacienda in Diamond Ranch Estates on 1.3 acres backing to a green belt! MUST see! Four outdoor patios & fire pit that make entertaining a breeze! This home will not disappoint. Enter this Hacienda thru grand Spanish-style double doors to a view straight out the oversized sliders to the back patios & firepit. The family room is a great place to cozy up to the gas fireplace & is open to the beautifully remodeled kitchen with new quartz counters/backsplash & never used matching CAFE stainless steel appliances (extra oven, convection cooktop & oven combo, oversized side by side fridge, beverage fridge and dishwasher)! Don't miss the brand new, large undermount sink and undermount "wetbar" sink in the peninsula. Counter space is abundant! The dining room has another oversize slider to covered patio for easy entertaining and a gas fireplace for those



Gwen Hamm

720-530-5489

gwenhamm@kw.com

<https://gwenhamm.kw.com/>

Scan code
 for more
 property
 details



cool evenings. The laundry has updated quartz counters, undermount sink and a "Costco" pantry right inside the garage for easy unloading. Powder bath has an attached tub room making this office a great guest room as well. Even another patio accessed by slider. The primary bedroom is so large it dwarfs a king sized bed so bring your sitting furniture as well! Remote controlled blinds! Another slider for access to yet another patio. Ready for a soak? The soaking tub has a Spanish flair with Spanish style beams overhead giving a magical feeling. Heated floors in primary bath. Enjoy your own space w/dbl vanities. large Walk in closet (14'x7.5'). There are 2 secondary bedrooms BOTH with Ensuite Bathrooms. Basement is completely unfinished and ready for your plans. The basement floor has recently been sealed & painted. Additionally, the dual HVACs are new 7/21, whole house humidifier new 7/21, water heaters new 7/21, sump-pump new 5/23, sun protective film on all rear windows summer 2021 (protects furniture/carpets from the intense sun), driveway is new 2021, Sonos Surround System, all smoke/co detectors new fall 2022.



Gwen Hamm

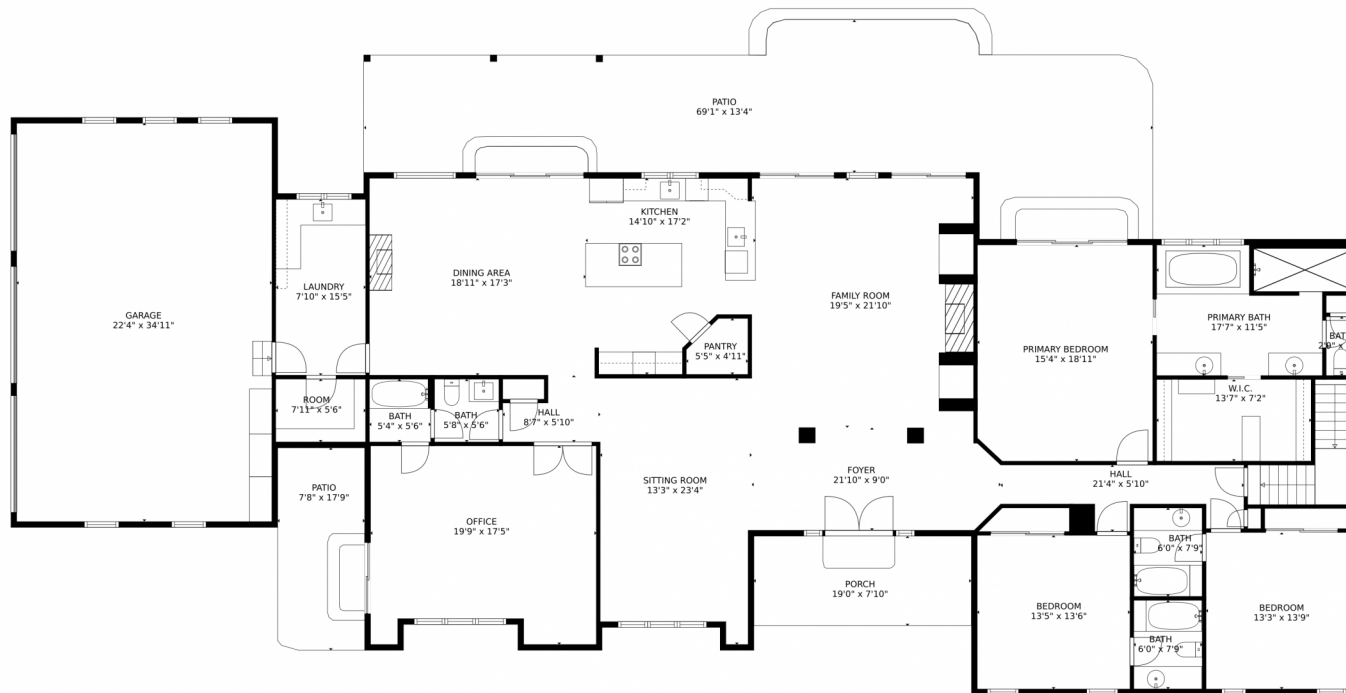
720-530-5489

gwenhamm@kw.com

<https://gwenhamm.kw.com/>



680 Sapphire Drive, Castle Rock, CO 80108 – 1st Floor



GROSS INTERNAL AREA
Below Ground: 0 sq. ft, FLOOR 2: 4173 sq. ft
EXCLUDED AREAS: UNFINISHED BASEMENT: 1245 sq. ft
PATIO: 990 sq. ft
PORCH: 150 sq. ft
TOTAL: 4173 sq. ft

MEASUREMENTS CALCULATED BY V1Photos.com ARE DEEMED HIGHLY RELIABLE BUT NOT GUARANTEED.



Disclaimer: Sizes and Dimensions are Approximate, Actual May Vary.

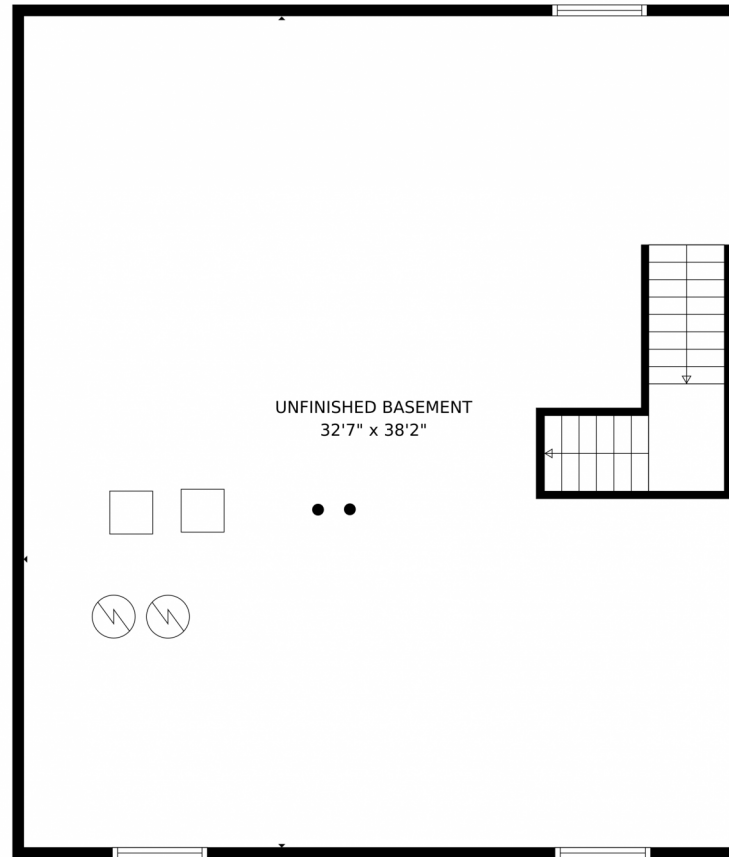


Gwen Hamm
720-530-5489
gwenhamm@kw.com
<https://gwenhamm.kw.com/>



Scan code
for more
property
details





GROSS INTERNAL AREA
Below Ground: 0 sq. ft, FLOOR 2: 4173 sq. ft
EXCLUDED AREAS: UNFINISHED BASEMENT: 1245 sq. ft
PATIO: 990 sq. ft
PORCH: 150 sq. ft
TOTAL: 4173 sq. ft

MEASUREMENTS CALCULATED BY V1Photos.com ARE DEEMED HIGHLY RELIABLE BUT NOT GUARANTEED.



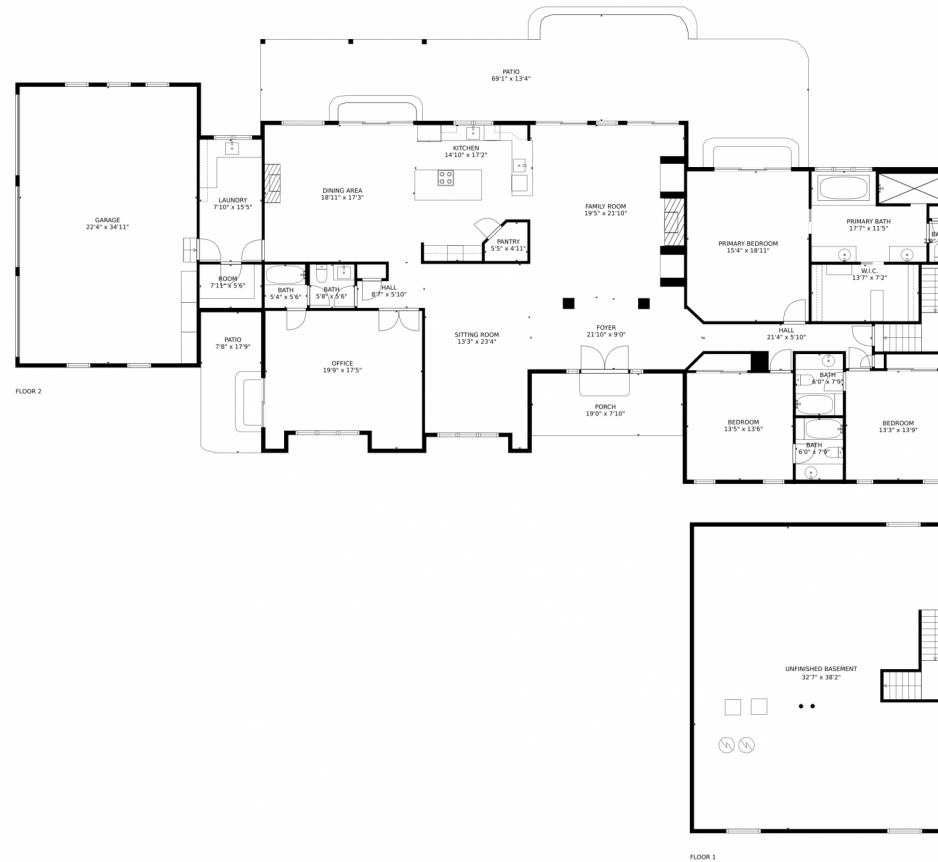
Disclaimer: Sizes and Dimensions are Approximate, Actual May Vary.



Gwen Hamm
720-530-5489
gwenhamm@kw.com
<https://gwenhamm.kw.com/>



680 Sapphire Drive, Castle Rock, CO 80108 – All Floors



GROSS INTERNAL AREA
Below Ground: 0 sq. ft, FLOOR 2: 4173 sq. ft
EXCLUDED AREAS: UNFINISHED BASEMENT: 1245 sq. ft
PATIO: 990 sq. ft
PORCH: 150 sq. ft
TOTAL: 4173 sq. ft

MEASUREMENTS CALCULATED BY V1Photos.COM ARE DEEMED HIGHLY RELIABLE BUT NOT GUARANTEED.



Disclaimer: Sizes and Dimensions are Approximate, Actual May Vary.



Gwen Hamm
720-530-5489
gwenhamm@kw.com
<https://gwenhamm.kw.com/>

