



7633 S Quatar Way
 Aurora, CO 80016
 COMMUNITY: Ridgeview Eagle Bend

MLS # 5899314
 PRICE \$535,000



Multi Family 2986 SQFT 3 Beds 2/1 Baths 2 Car 0.13 Acre

PROPERTY DETAILS

Welcome home to Ridgeview Eagle Bend where this sparkling end unit really has it all! Many honey do's have already been honey done to include all new interior paint throughout the unit, brand new flooring throughout the main level, brand new carpet on the upper level, many new lighting fixtures are also found throughout the home, two of the three toilets are even brand new. W-O-W! The main level was designed with your entertainer's heart in mind, the open concept gently transitions you from the living room into the kitchen and dining meaning you can stay connected while you cook your favorite family recipes. The owner's suite and a generously sized home office along with a powder room and the laundry facilities complete the main level of the home. Upstairs you will find two very generously sized additional bedrooms along with a secondary full bathroom between them. The full sized basement offers walk out access and awaits your finishing touch. Just off of your back deck, you can see the open spaces that boarder the community, there isn't another building at your back door. Residents of Ridgeview Eagle Bend enjoy a community-only swimming pool, playground, dog park, and the award-winning education system of Cherry Creek Schools including Grandview HS. Walk to the Saddle Rock Village shopping center in just 10 minutes where you will find many lifestyle necessities such as Target, Starbucks, PetSmart, JoAnne's Fabrics, and Ace Hardware along with Las Fajitas for



Tatyana Sturm
 720-350-5909
 tatyana@exitrealtydtc.com
 https://thestorckteam.com



dining and even a local nail salon. Enjoy endless dining, shopping, and entertainment options in the Southlands Outdoor Retail District just minutes away featuring a full AMC Dine-In Movie Theater, abundant casual dining options along with higher-end restaurant options as well, and so many shopping choices. The Southlands Mall also features a robust courtyard area with a mini splash park in the Summer and a skating rink in the Winter.



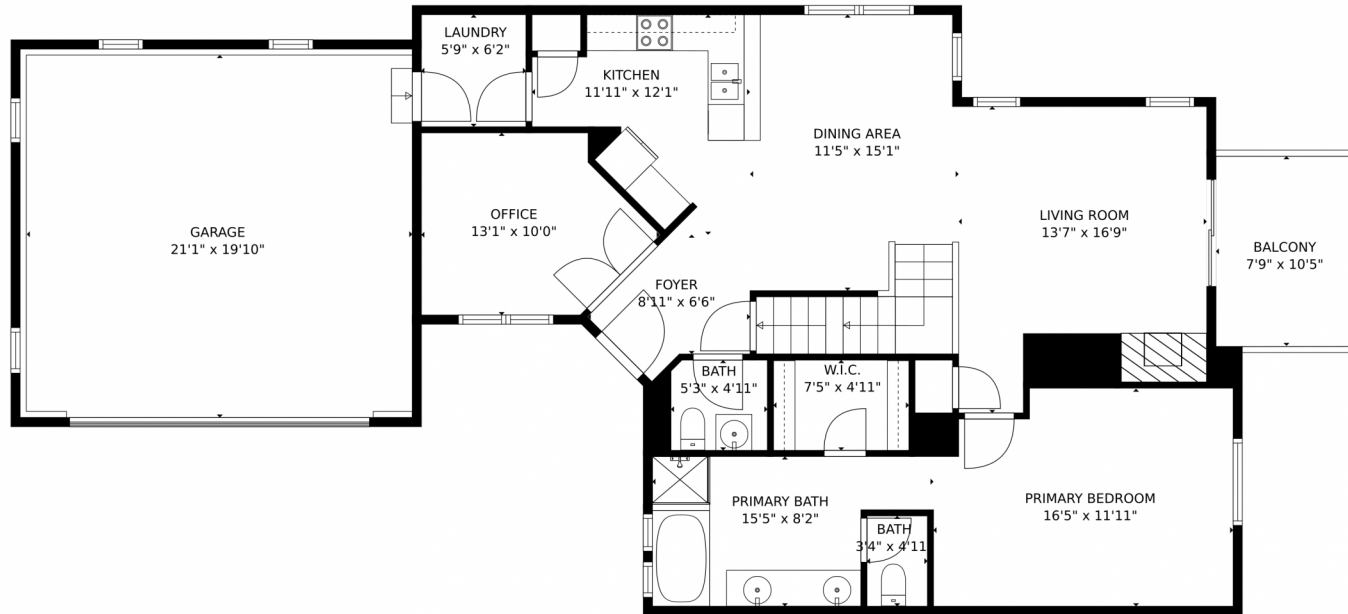
Tatyana Sturm
720-350-5909
tatyana@exitrealtydtc.com
<https://thestorckteam.com>



Scan code
for more
property
details



7633 S Quatar Way, Aurora, CO 80016 – 1st Floor



GROSS INTERNAL AREA
Below Ground: 10 sq. ft, FLOOR 2: 1145 sq. ft, FLOOR 3: 498 sq. ft
EXCLUDED AREAS: UNFINISHED BASEMENT: 1099 sq. ft, BALCONY: 80 sq. ft, GARAGE: 433 sq. ft,
OPEN TO BELOW: 112 sq. ft
TOTAL: 1653 sq. ft
MEASUREMENTS CALCULATED BY V1Photos.COM ARE DEEMED HIGHLY RELIABLE BUT NOT GUARANTEED.



Disclaimer: Sizes and Dimensions are Approximate, Actual May Vary.

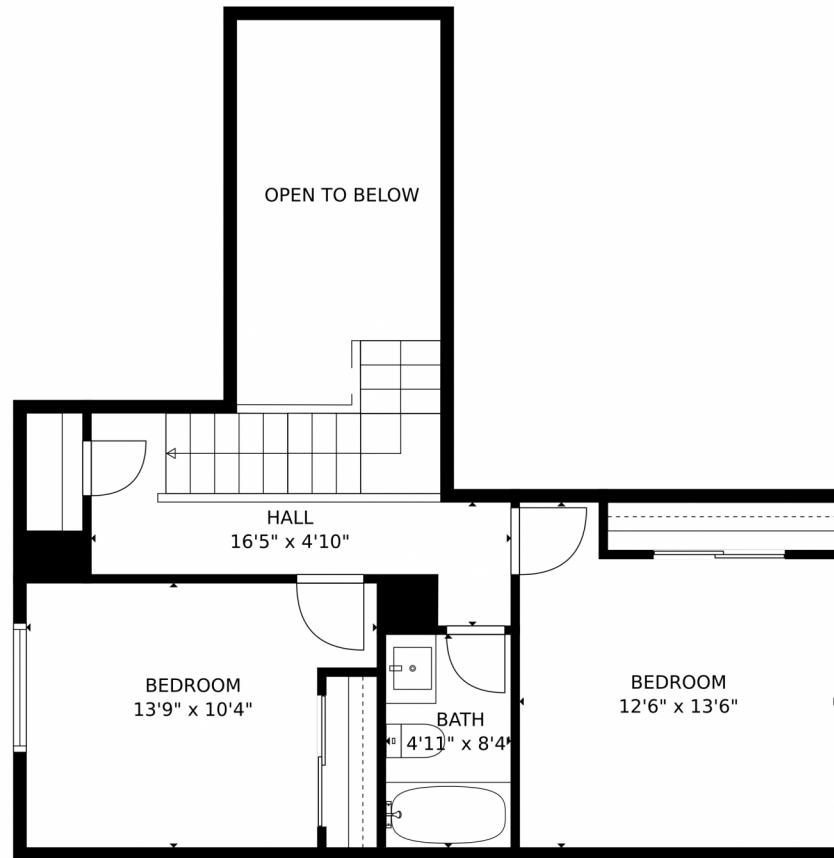


Tatyana Sturm
720-350-5909
tatyana@exitrealtydtc.com
<https://thestorckteam.com>



Scan code
for more
property
details





GROSS INTERNAL AREA
Below Ground: 10 sq. ft, FLOOR 2: 1145 sq. ft, FLOOR 3: 498 sq. ft
EXCLUDED AREAS: UNFINISHED BASEMENT: 1099 sq. ft, BALCONY: 80 sq. ft, GARAGE: 433 sq. ft,
OPEN TO BELOW: 112 sq. ft
TOTAL: 1653 sq. ft
MEASUREMENTS CALCULATED BY V1Photos.COM ARE DEEMED HIGHLY RELIABLE BUT NOT GUARANTEED.

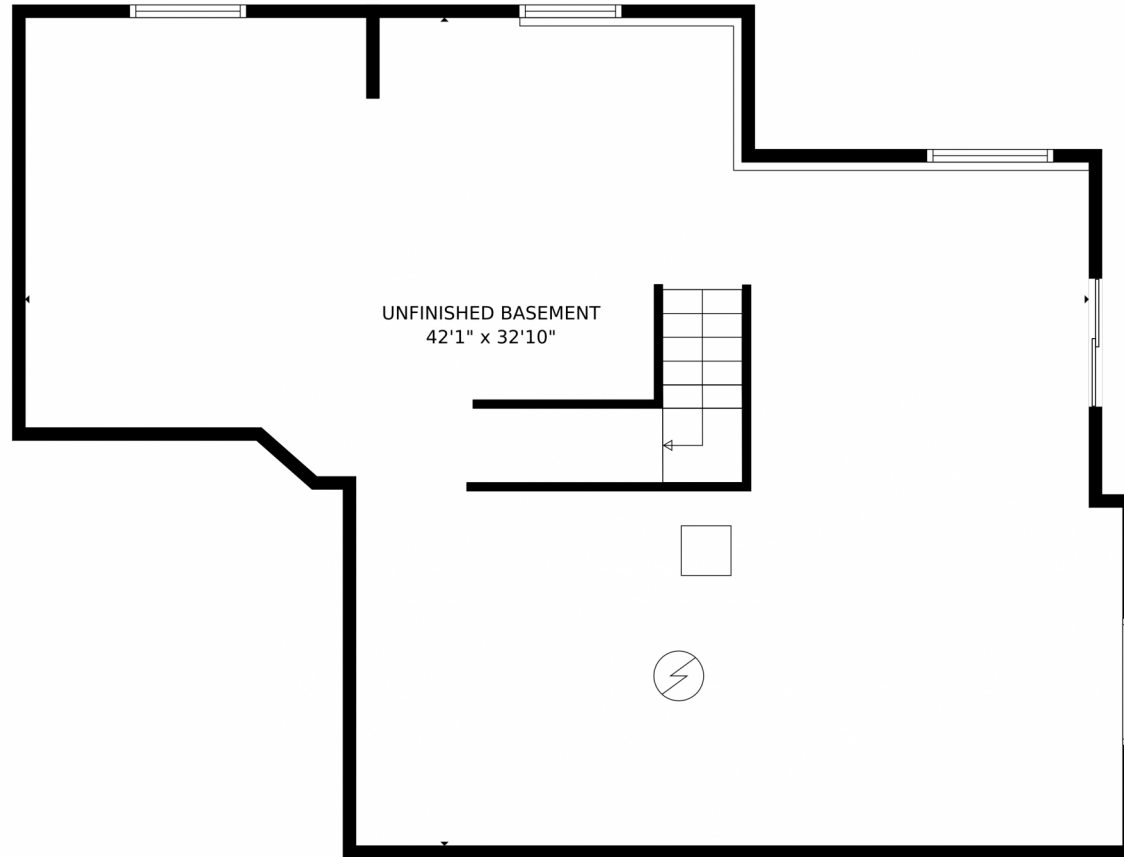


Disclaimer: Sizes and Dimensions are Approximate, Actual May Vary.



Tatyana Sturm
720-350-5909
tatyana@exitrealtydtc.com
<https://thestorckteam.com>





GROSS INTERNAL AREA
Below Ground: 10 sq. ft, FLOOR 2: 1145 sq. ft, FLOOR 3: 498 sq. ft
EXCLUDED AREAS: UNFINISHED BASEMENT: 1099 sq. ft, BALCONY: 80 sq. ft, GARAGE: 433 sq. ft,
OPEN TO BELOW: 112 sq. ft
TOTAL: 1653 sq. ft
MEASUREMENTS CALCULATED BY V1Photos.COM ARE DEEMED HIGHLY RELIABLE BUT NOT GUARANTEED.



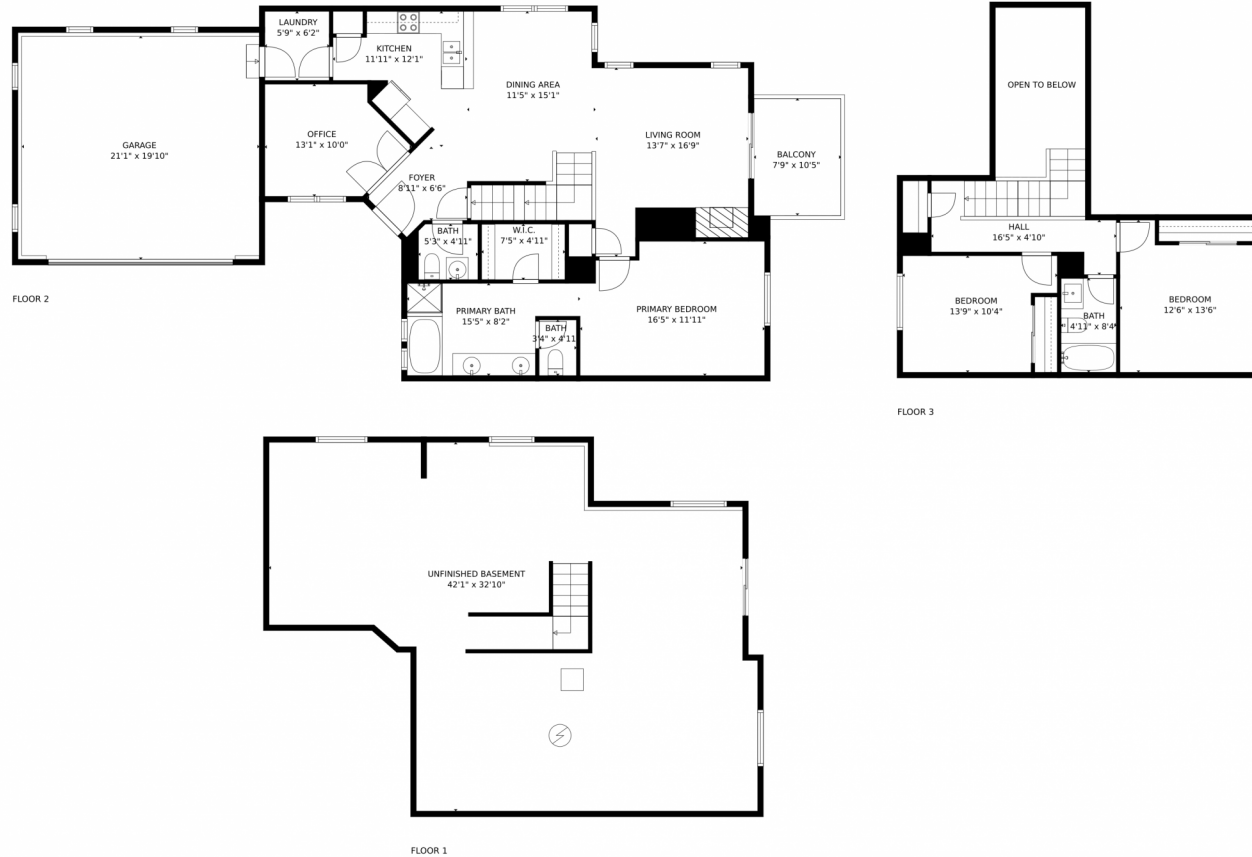
Disclaimer: Sizes and Dimensions are Approximate, Actual May Vary.



Tatyana Sturm
720-350-5909
tatyana@exitrealtydtc.com
<https://thestorckteam.com>



7633 S Qatar Way, Aurora, CO 80016 – All Floors



GROSS INTERNAL AREA
Below Ground: 10 sq. ft, FLOOR 2: 1145 sq. ft, FLOOR 3: 498 sq. ft
EXCLUDED AREAS: UNFINISHED BASEMENT: 1099 sq. ft, BALCONY: 80 sq. ft, GARAGE: 433 sq. ft,
OPEN TO BELOW: 112 sq. ft
TOTAL: 1653 sq. ft
MEASUREMENTS CALCULATED BY V1Photos.COM ARE DEEMED HIGHLY RELIABLE BUT NOT GUARANTEED.



Disclaimer: Sizes and Dimensions are Approximate, Actual May Vary.



Tatyana Sturm
720-350-5909
tatyana@exitrealttydtc.com
<https://thestorckteam.com>



Scan code
for more
property
details

