




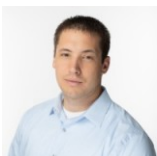
 Single Family

 2676 SQFT

 4 Beds

 3 Baths

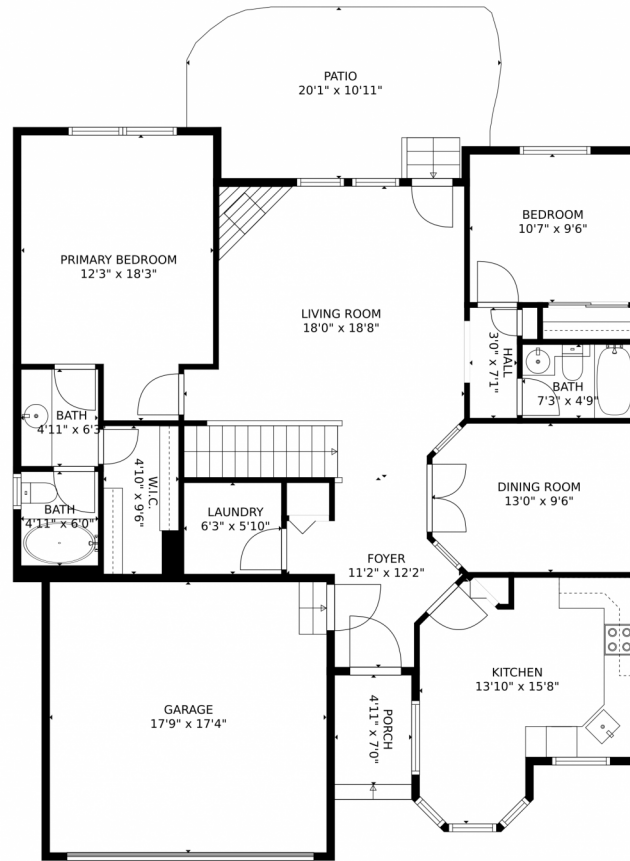
 2 Car



**Jordan Kermes**  
952-956-2958  
jordan@kermesllc.com



# 2325 Troy Court, Colorado Springs, CO 80918 – Main Level



GROSS INTERNAL AREA  
FLOOR 1: 1115 sq. ft. FLOOR 2: 1259 sq. ft.  
EXCLUDED AREAS: GARAGE: 308 sq. ft.  
PATIO: 200 sq. ft. PORCH: 39 sq. ft.  
TOTAL: 2373 sq. ft.  
MEASUREMENTS CALCULATED BY V1Photos.COM ARE DEEMED HIGHLY RELIABLE BUT NOT GUARANTEED.



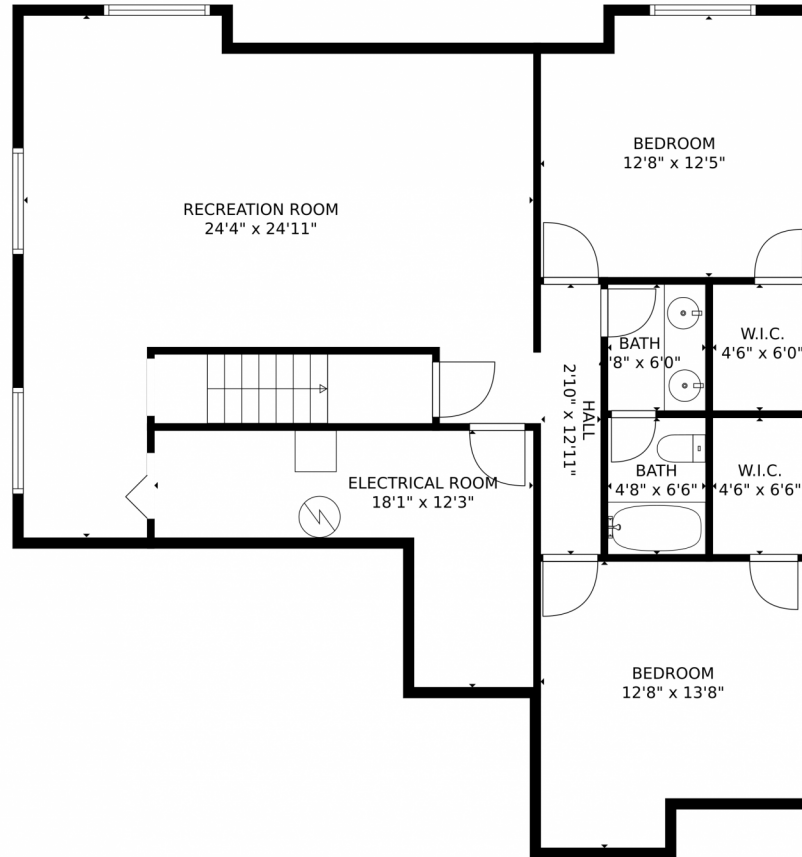
Disclaimer: Sizes and Dimensions are Approximate, Actual May Vary.



**Jordan Kermes**  
952-956-2958  
jordan@kermesllc.com



# 2325 Troy Court, Colorado Springs, CO 80918 – Lower Level



GROSS INTERNAL AREA  
FLOOR 1: 1115 sq. ft. FLOOR 2: 1259 sq. ft.  
EXCLUDED AREAS: GARAGE: 308 sq. ft.  
PATIO: 200 sq. ft. PORCH: 39 sq. ft.  
TOTAL: 2373 sq. ft.  
MEASUREMENTS CALCULATED BY V1Photos.COM ARE DEEMED HIGHLY RELIABLE BUT NOT GUARANTEED.



Disclaimer: Sizes and Dimensions are Approximate, Actual May Vary.



**Jordan Kermes**  
952-956-2958  
jordan@kermesllc.com



Scan code for more property details



# 2325 Troy Court, Colorado Springs, CO 80918 – All Levels



GROSS INTERNAL AREA  
 FLOOR 1: 1115 sq. ft. FLOOR 2: 1259 sq. ft.  
 EXCLUDED AREAS: GARAGE: 308 sq. ft.  
 PATIO: 200 sq. ft. PORCH: 39 sq. ft.  
 TOTAL: 2373 sq. ft.  
 MEASUREMENTS CALCULATED BY V1Photos.com ARE DEEMED HIGHLY RELIABLE BUT NOT GUARANTEED.

Disclaimer: Sizes and Dimensions are Approximate, Actual May Vary.



**Jordan Kermes**  
 952-956-2958  
 jordan@kermesllc.com



Scan code for more property details