

COMPASS

2361 South Gilpin Street  
Denver, CO 80210



Single Family



1554 SQFT



3 Beds



2 Baths



1 Car



0.13 Acre



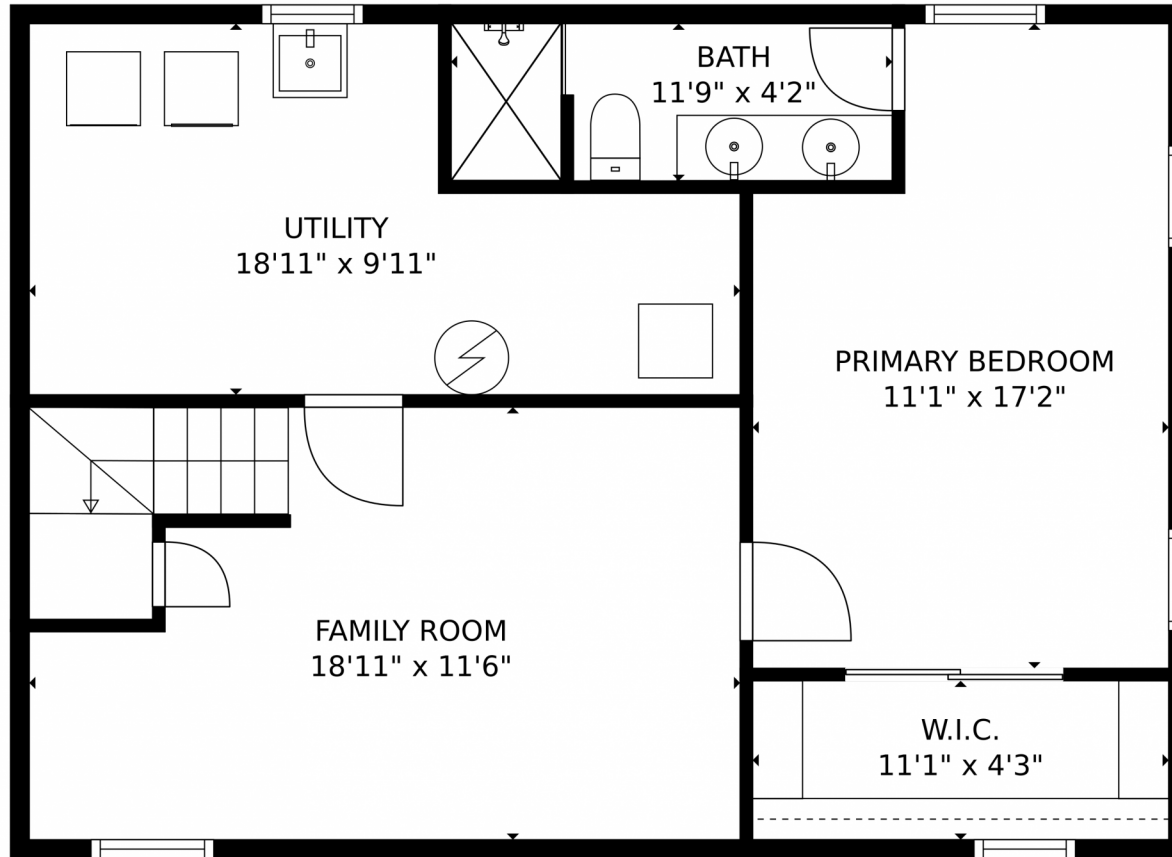
**FELIX LUCK**  
720-404-0001  
felix.luck@compass.com



Scan code  
for more  
property  
details



2361 South Gilpin Street, Denver, CO 80210 – Lower Level



GROSS INTERNAL AREA  
Below Ground: 510 sq. ft, FLOOR 2: 717 sq. ft  
EXCLUDED AREAS: UTILITY: 151 sq. ft, PATIO: 35 sq. ft, PORCH: 16 sq. ft  
TOTAL: 1227 sq. ft  
MEASUREMENTS CALCULATED BY V1Photos.com ARE DEEMED HIGHLY RELIABLE BUT NOT GUARANTEED.



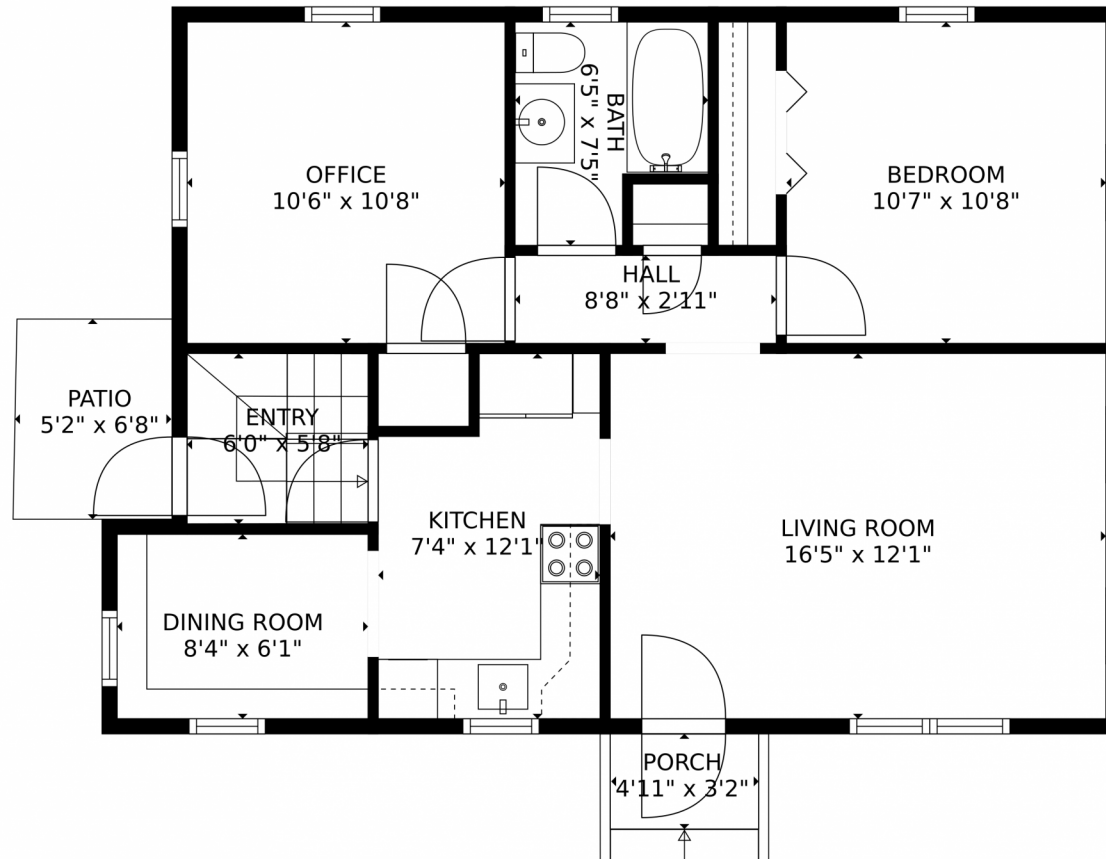
Disclaimer: Sizes and Dimensions are Approximate, Actual May Vary.



**FELIX LUCK**  
720-404-0001  
felix.luck@compass.com



# 2361 South Gilpin Street, Denver, CO 80210 – Main Level



GROSS INTERNAL AREA  
Below Ground: 510 sq. ft, FLOOR 2: 717 sq. ft  
EXCLUDED AREAS: UTILITY: 151 sq. ft, PATIO: 35 sq. ft, PORCH: 16 sq. ft  
TOTAL: 1227 sq. ft  
MEASUREMENTS CALCULATED BY V1Photos.com ARE DEEMED HIGHLY RELIABLE BUT NOT GUARANTEED.



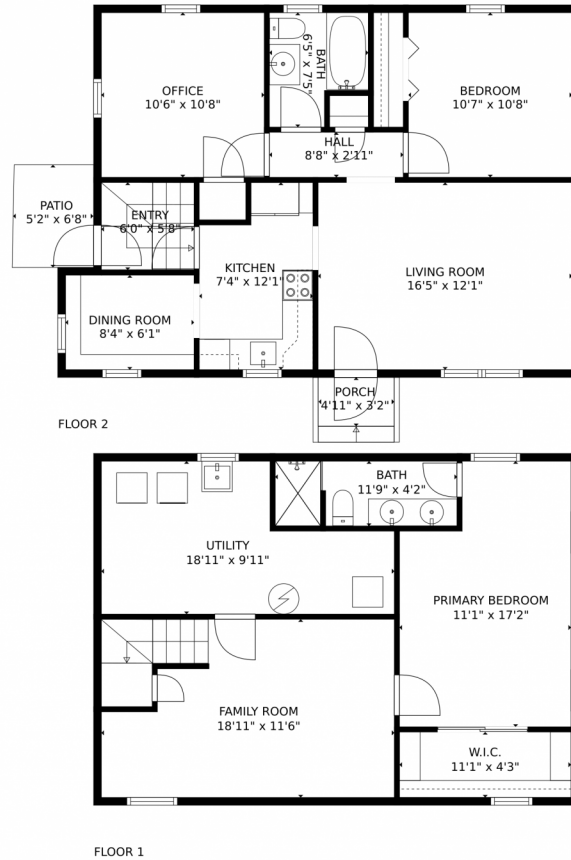
Disclaimer: Sizes and Dimensions are Approximate, Actual May Vary.



**FELIX LUCK**  
720-404-0001  
felix.luck@compass.com



# 2361 South Gilpin Street, Denver, CO 80210 – All Levels



GROSS INTERNAL AREA  
Below Ground: 510 sq. ft, FLOOR 2: 717 sq. ft  
EXCLUDED AREAS: UTILITY: 151 sq. ft, PATIO: 35 sq. ft, PORCH: 16 sq. ft  
TOTAL: 1227 sq. ft  
MEASUREMENTS CALCULATED BY V1Photos.com ARE DEEMED HIGHLY RELIABLE BUT NOT GUARANTEED.



Disclaimer: Sizes and Dimensions are Approximate, Actual May Vary.



**FELIX LUCK**  
720-404-0001  
felix.luck@compass.com

