



 Townhouse  
  1262 SQFT  
  3 Beds  
  2/1 Baths  
  1 Car  
  0.02 Acre

## PROPERTY DETAILS

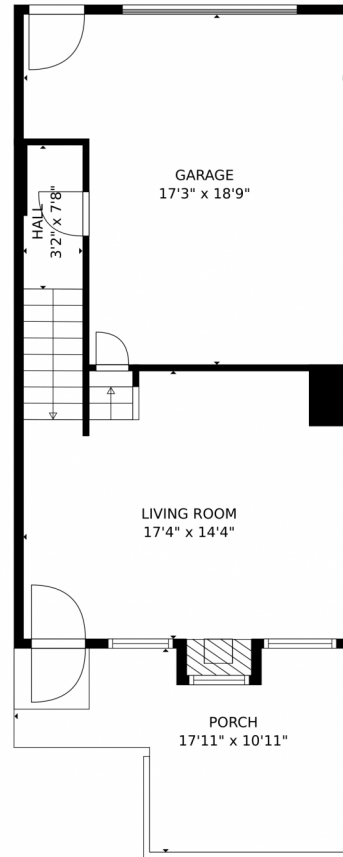
This charming townhome boasts an excellent location, overlooking a greenspace belonging to a school. The home features 3 bedrooms, 3 bathrooms, and a 1-car attached garage with additional storage space. It has been tastefully updated with a new stainless steel dishwasher and stove. The main level half bath has been fully remodeled, showcasing beautiful shiplap, a modern sink, matte black faucet, and an elegant mirror. For added privacy, an attractive barn door has been installed in the Primary Bathroom. The home is equipped with smart technology, featuring a Ring Video Doorbell and Google Thermostat. The owners are currently installing a brand-new, energy-efficient furnace and A/C unit. This significant upgrade will greatly benefit the new buyers! There's a community pool that you can take advantage of all summer. Offering a fantastic location, the home doesn't face another building, allowing for an unobstructed view of a large grassy area from the nearby elementary school. Conveniently located, the home is within close proximity to coffee shops, grocery stores, restaurants, parks, schools, and the library. The HOA permits parking for two more vehicles behind the garage.



**Amanda Duran**  
720-427-9882  
amandasvipsservice@yahoo.com



12027 Krameria st, Brighton, CO 80602 – Main Level



GROSS INTERNAL AREA  
FLOOR 1: 289 sq. ft, FLOOR 2: 341 sq. ft, FLOOR 3: 621 sq. ft  
EXCLUDED AREAS: GARAGE: 283 sq. ft  
PORCH: 147 sq. ft  
FIREPLACE: 5 sq. ft  
TOTAL: 1251 sq. ft

MEASUREMENTS CALCULATED BY V1Photos.com ARE DEEMED HIGHLY RELIABLE BUT NOT GUARANTEED.

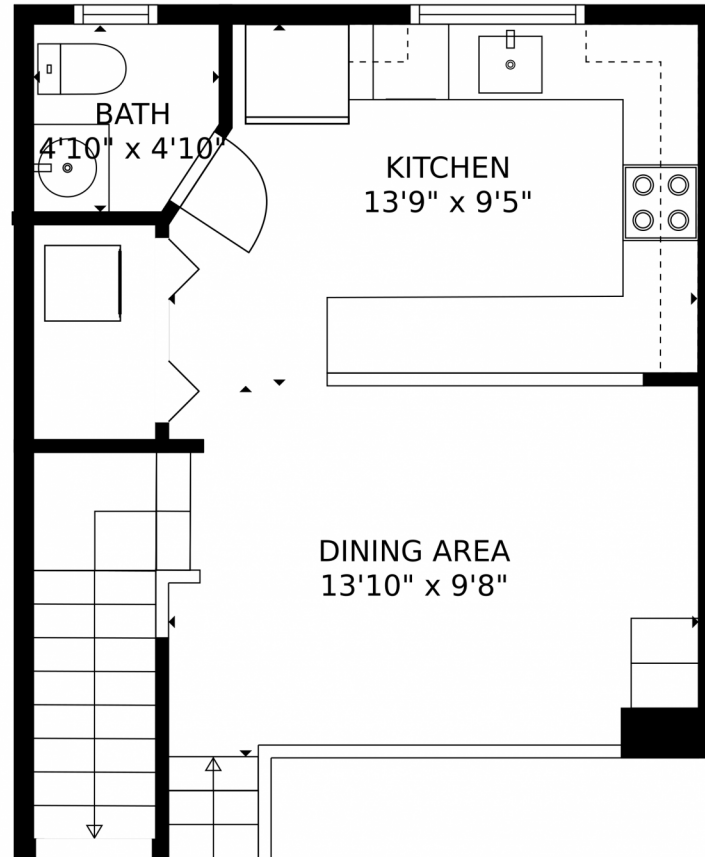


Disclaimer: Sizes and Dimensions are Approximate, Actual May Vary.



**Amanda Duran**  
720-427-9882  
amandasvip-service@yahoo.com





GROSS INTERNAL AREA  
FLOOR 1: 289 sq. ft, FLOOR 2: 341 sq. ft, FLOOR 3: 621 sq. ft  
EXCLUDED AREAS: GARAGE: 283 sq. ft  
PORCH: 147 sq. ft  
FIREPLACE: 5 sq. ft  
TOTAL: 1251 sq. ft  
MEASUREMENTS CALCULATED BY V1Photos.com ARE DEEMED HIGHLY RELIABLE BUT NOT GUARANTEED.



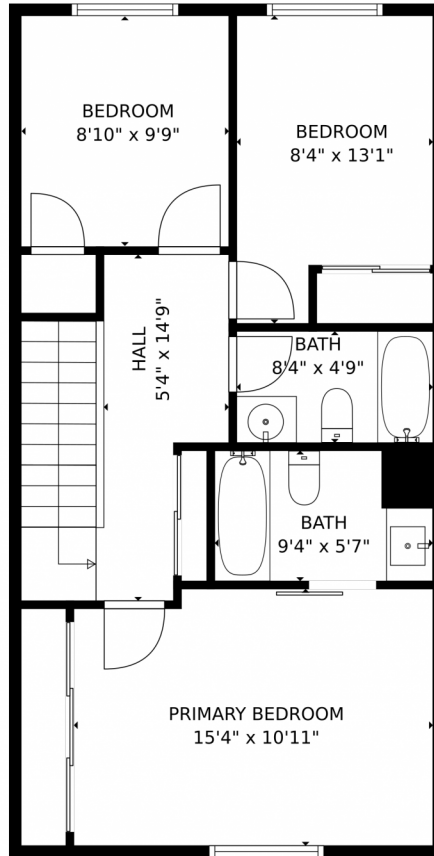
Disclaimer: Sizes and Dimensions are Approximate, Actual May Vary.



**Amanda Duran**  
720-427-9882  
amandasvip-service@yahoo.com



12027 Krameria st, Brighton, CO 80602 – Top Level



GROSS INTERNAL AREA  
FLOOR 1: 289 sq. ft, FLOOR 2: 341 sq. ft, FLOOR 3: 621 sq. ft  
EXCLUDED AREAS: GARAGE: 283 sq. ft  
PORCH: 147 sq. ft  
FIREPLACE: 5 sq. ft  
TOTAL: 1251 sq. ft

MEASUREMENTS CALCULATED BY V1Photos.com ARE DEEMED HIGHLY RELIABLE BUT NOT GUARANTEED.



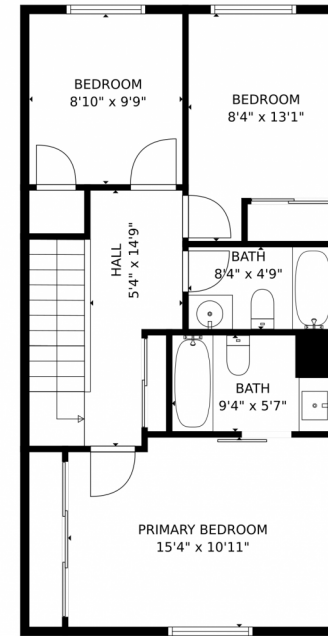
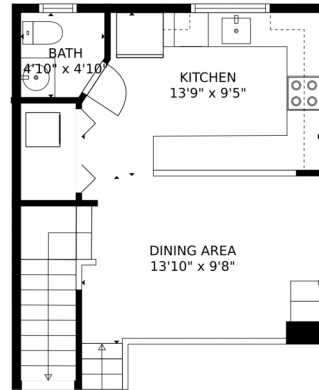
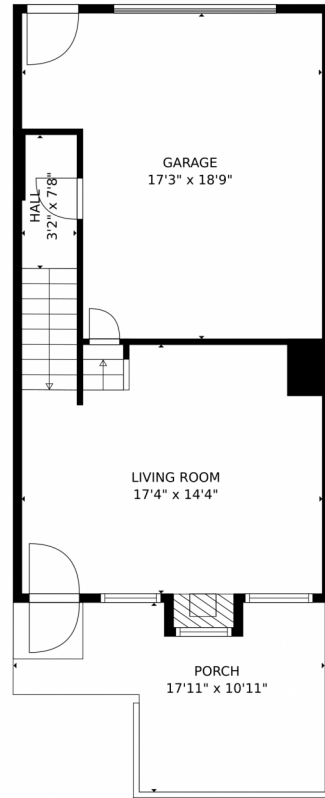
Disclaimer: Sizes and Dimensions are Approximate, Actual May Vary.



**Amanda Duran**  
720-427-9882  
amandasvip-service@yahoo.com



# 12027 Krameria st, Brighton, CO 80602 – All Levels



GROSS INTERNAL AREA  
FLOOR 1: 289 sq. ft, FLOOR 2: 341 sq. ft, FLOOR 3: 621 sq. ft  
EXCLUDED AREAS: GARAGE: 283 sq. ft  
PORCH: 147 sq. ft  
FIREPLACE: 5 sq. ft  
TOTAL: 1251 sq. ft

MEASUREMENTS CALCULATED BY V1Photos.COM ARE DEEMED HIGHLY RELIABLE BUT NOT GUARANTEED.



Disclaimer: Sizes and Dimensions are Approximate, Actual May Vary.



**Amanda Duran**  
720-427-9882  
amandasvipsservice@yahoo.com

