



Single Family

4112 SQFT

4 Beds

3 Baths

3 Car

0.22 Acre

PROPERTY DETAILS

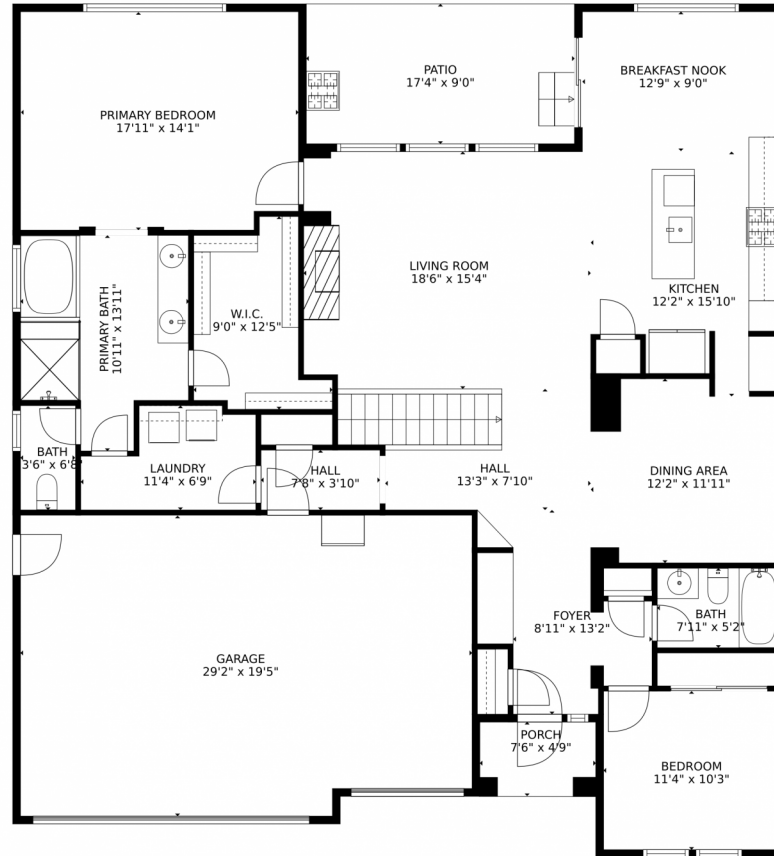
This stunning ranch-style home, built in 2017, offers a spacious 4112 square feet living area, providing ample room for comfortable living and entertaining. A stucco exterior, adds to its attractive curb appeal, and the fully landscaped and fenced large lot is a bonus. As you step inside, you'll immediately notice the impeccable interior, meticulously maintained so it looks nearly new. The home boasts 4 bedrooms and 3 baths, additionally, the basement offers the potential to build a 5th bedroom and 4th bathroom, allowing for future expansion and customization. The property includes a three-car garage, providing ample space for vehicles & storage.



Laura Gallant
303-956-1793
lgallant@erashields.com
<https://mountainprairielivingcos.com/>



5420 Paddington Creek Place, Colorado Springs, CO 80924 – Main Level



GROSS INTERNAL AREA
Below Ground: 1167 sq. ft. FLOOR 2: 1766 sq. ft.
EXCLUDED AREAS: ELECTRICAL ROOM: 35 sq. ft. STORAGE: 393 sq. ft. GARAGE: 550 sq. ft.
PORCH: 36 sq. ft. PATIO: 156 sq. ft.
TOTAL: 2933 sq. ft.
MEASUREMENTS CALCULATED BY V1Photos.COM ARE DEEMED HIGHLY RELIABLE BUT NOT GUARANTEED.



Disclaimer: Sizes and Dimensions are Approximate, Actual May Vary.



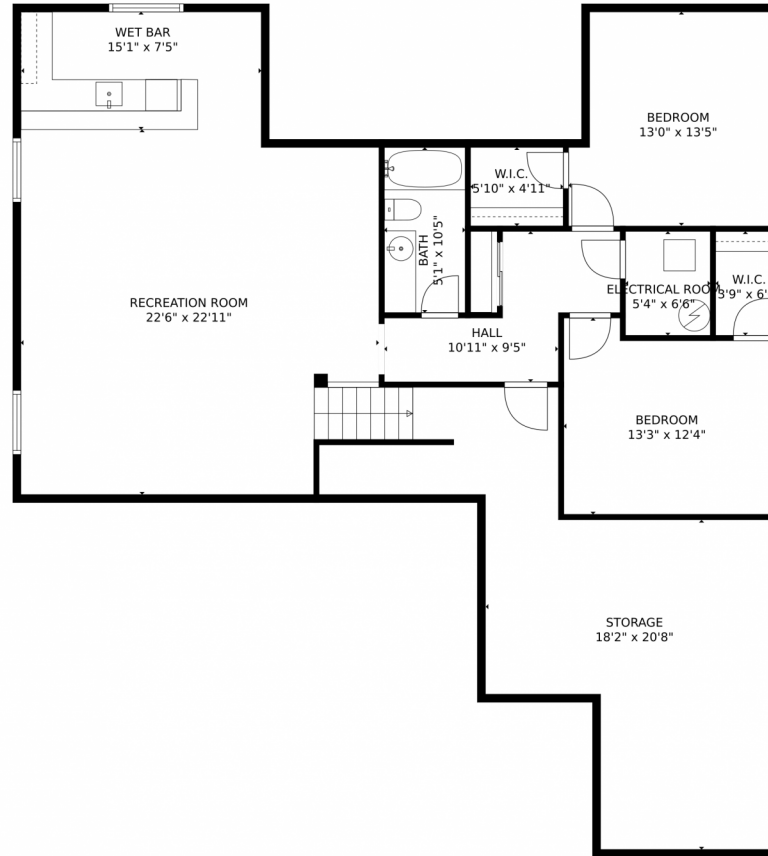
Laura Gallant
303-956-1793
lgallant@erashields.com
<https://mountainprairielivingcos.com/>



Scan code
for more
property
details



5420 Paddington Creek Place, Colorado Springs, CO 80924 – Lower Level



GROSS INTERNAL AREA
Below Ground: 1167 sq. ft, FLOOR 2: 1766 sq. ft
EXCLUDED AREAS: ELECTRICAL ROOM: 35 sq. ft, STORAGE: 393 sq. ft, GARAGE: 550 sq. ft,
PORCH: 36 sq. ft, PATIO: 156 sq. ft
TOTAL: 2933 sq. ft
MEASUREMENTS CALCULATED BY V1Photos.com ARE DEEMED HIGHLY RELIABLE BUT NOT GUARANTEED.



Disclaimer: Sizes and Dimensions are Approximate, Actual May Vary.



Laura Gallant
303-956-1793
lgallant@erashields.com
<https://mountainprairielivingcos.com/>



5420 Paddington Creek Place, Colorado Springs, CO 80924 – All Levels



GROSS INTERNAL AREA
Below Ground: 1167 sq. ft, FLOOR 2: 1766 sq. ft
EXCLUDED AREAS: ELECTRICAL ROOM: 35 sq. ft, STORAGE: 393 sq. ft, GARAGE: 550 sq. ft,
PORCH: 36 sq. ft, PATIO: 156 sq. ft
TOTAL: 2933 sq. ft
MEASUREMENTS CALCULATED BY V1Photos.COM ARE DEEMED HIGHLY RELIABLE BUT NOT GUARANTEED.



Disclaimer: Sizes and Dimensions are Approximate, Actual May Vary.



Laura Gallant
303-956-1793
lgallant@erashields.com
<https://mountainprairielivingcos.com/>



Scan code
for more
property
details

