



781 11th Street
Boulder, CO 80302

MLS # 989747
PRICE \$1,399,000



Single Family



2060 SQFT



4 Beds



2 Baths



1 Car



0.14 Acre

PROPERTY DETAILS

Owner financing available. Amazing opportunity to own a piece of the Boulder lifestyle with this charming home in an incredible location next to Chautauqua, trails, CU and the Hill. Lovely and sunny home situated in a neighborhood of multimillion dollar homes. This home welcomes you to linger on the relaxing front porch and gaze at the lush front yard. Enter and you will find an open floor plan, hardwood floors, craftsman style trim, a cozy fireplace, a stately dining area plus three bedrooms that make for main level living ease. Head down the stairs to the walkout lower level to a perfect home office, guest quarters or work out room. There is also a lovely wet bar area and additional bath on the lower level walk out that you can customize to your lifestyle. Outside you can relax in your dreamy yard with incredible views of the Flatirons and Foothills. There is so much potential in this home to live in as is or remodel or redo to your liking. Great income potential too.



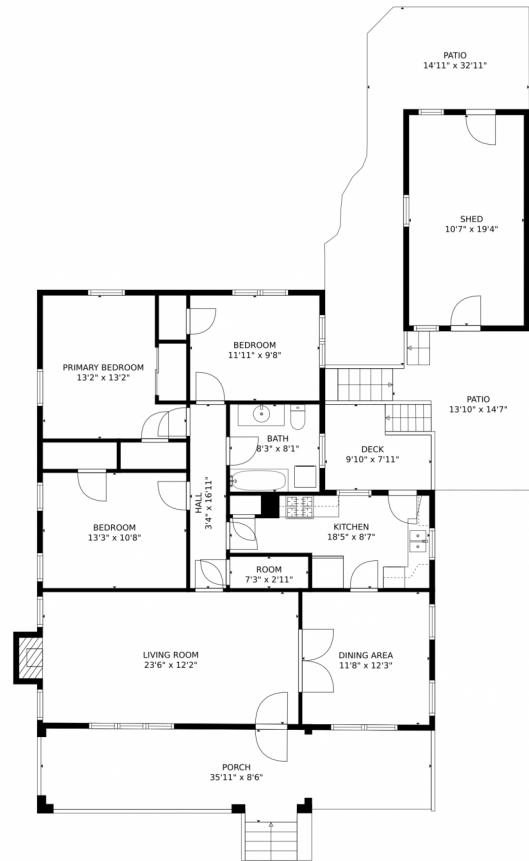
Carole Kaye
303-931-1709
ckayerltr@gmail.com



Scan code
for more
property
details



781 11th Street, Boulder, CO 80302 – Main Level



GROSS INTERNAL AREA
Below Ground: 504 sq. ft, FLOOR 2: 1222 sq. ft
EXCLUDED AREAS: SHED: 206 sq. ft
PORCH: 271 sq. ft
DECK: 65 sq. ft
PATIO: 482 sq. ft
FIREPLACE: 6 sq. ft
TOTAL: 1726 sq. ft

MEASUREMENTS CALCULATED BY V1Photos.com ARE DEEMED HIGHLY RELIABLE BUT NOT GUARANTEED.



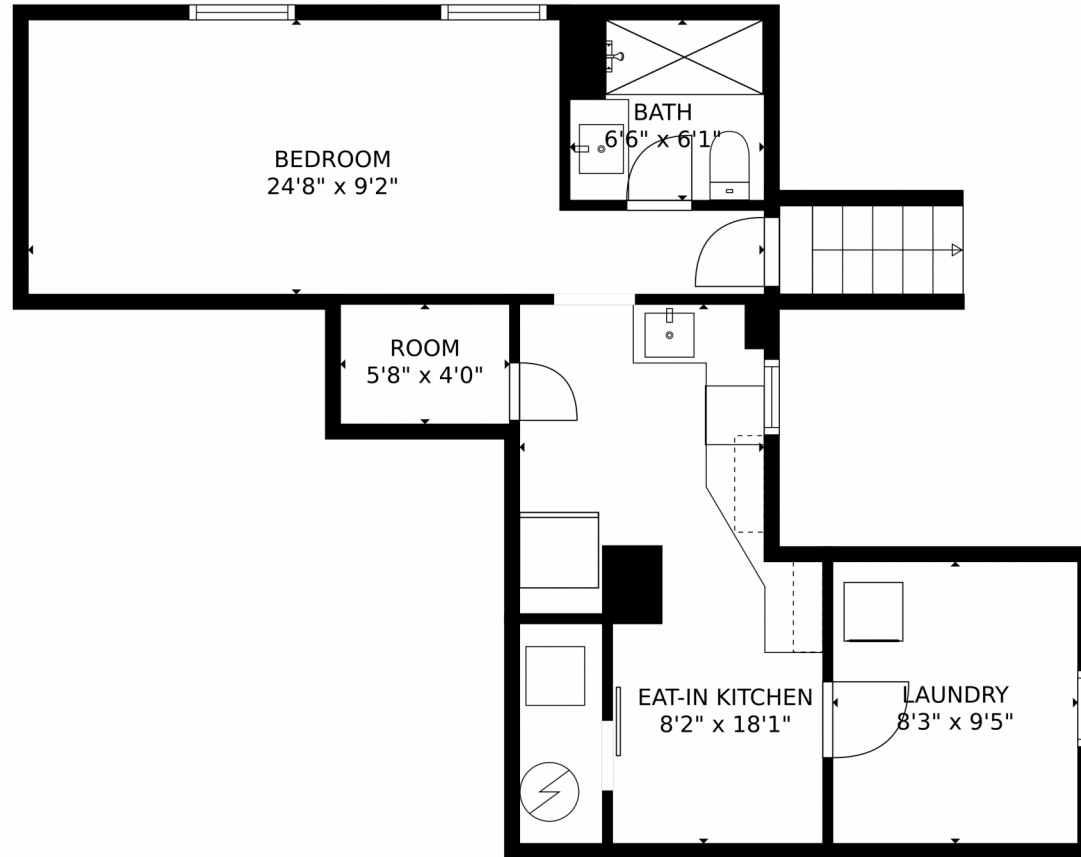
Disclaimer: Sizes and Dimensions are Approximate, Actual May Vary.



Carole Kaye
303-931-1709
ckayerltr@gmail.com



781 11th Street, Boulder, CO 80302 – Upper Level



GROSS INTERNAL AREA
Below Ground: 504 sq. ft, FLOOR 2: 1222 sq. ft
EXCLUDED AREAS: SHED: 206 sq. ft
PORCH: 271 sq. ft
DECK: 65 sq. ft
PATIO: 482 sq. ft
FIREPLACE: 6 sq. ft
TOTAL: 1726 sq. ft

MEASUREMENTS CALCULATED BY V1Photos.com ARE DEEMED HIGHLY RELIABLE BUT NOT GUARANTEED.



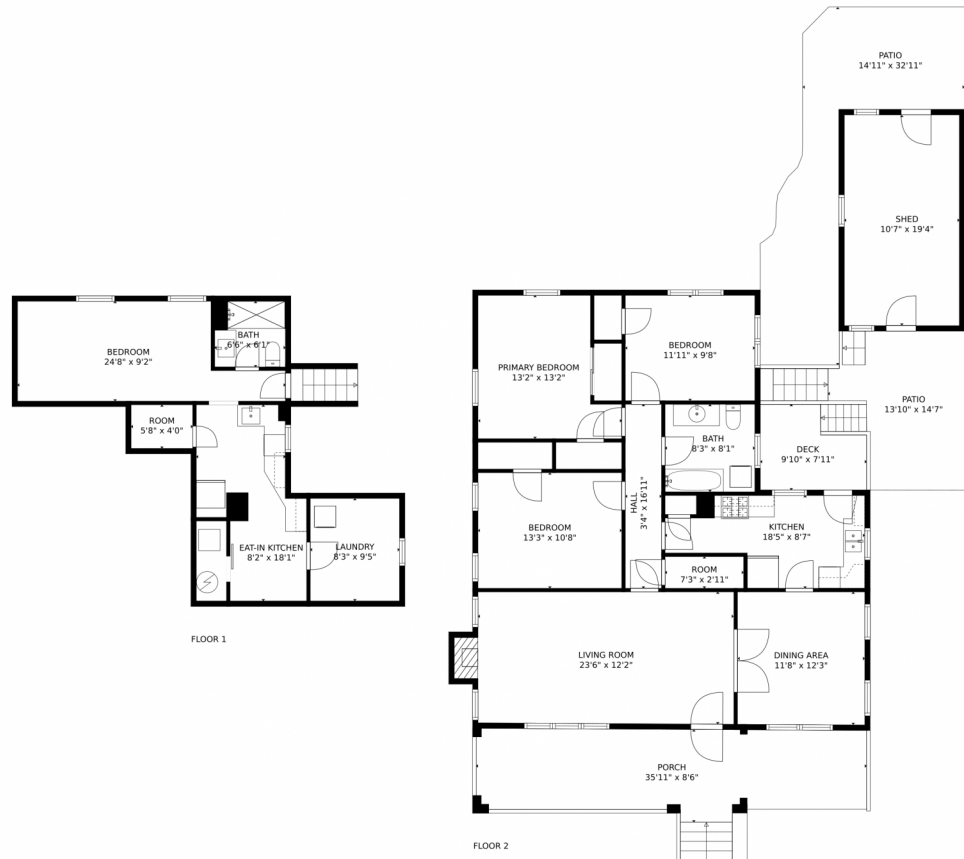
Disclaimer: Sizes and Dimensions are Approximate, Actual May Vary.



Carole Kaye
303-931-1709
ckayerltr@gmail.com



781 11th Street, Boulder, CO 80302 – All Level



GROSS INTERNAL AREA
Below Ground: 504 sq. ft, FLOOR 2: 1222 sq. ft
EXCLUDED AREAS: SHED: 206 sq. ft
PORCH: 271 sq. ft
DECK: 65 sq. ft
PATIO: 482 sq. ft
FIREPLACE: 6 sq. ft
TOTAL: 1726 sq. ft

MEASUREMENTS CALCULATED BY V1Photos.COM ARE DEEMED HIGHLY RELIABLE BUT NOT GUARANTEED.



Disclaimer: Sizes and Dimensions are Approximate, Actual May Vary.



Carole Kaye
303-931-1709
ckayerltr@gmail.com

