



227 West Northampton Drive
Pueblo West, CO 81007

MLS # 8703766

COMMUNITY: Liberty Point Subdivision. ***Additional 2 car detached garage



Single Family



2611 SQFT



5 Beds



3 Baths



3 Car



1.24 Acre

PROPERTY DETAILS

Don't miss this spectacular home located in the highly desirable area of Liberty Point Estates in Pueblo West! This highly cared for and welcoming home is a 5 bedroom / 3 bath 2,611sq. ft. rancher complete with finished basement and attached 3 car garage. Here you will find a welcoming floor-plan with the master as well as two guest bedrooms upstairs and the remaining 2 bedrooms downstairs. Additionally, there is a separate 2 car garage that can be used as a shop or to store the boat. There is plenty of room here on this 1.15 acre lot, which has extensive landscaping with xeriscape in the front and lush green grass and mature trees in the back. This is a horse-friendly community and has an equestrian trail directly behind the house as well as a convenient dog-run that allows pets access into the garage. Here is your chance to have a wonderful home and be minutes from Pueblo Reservoir. All appliances are included with this move-in ready home. Call today for an exclusive showing.



Clint Whiting

719-387-9375

clint@greatplains.land

<https://greatplainslandcompany.com/>

Scan code
for more
property
details



227 West Northampton Drive, Pueblo West, CO 81007 – Main Level



GROSS INTERNAL AREA
Below Ground: 939 sq. ft, FLOOR 2: 1300 sq. ft, FLOOR 3: 0 sq. ft
EXCLUDED AREAS: ELECTRICAL ROOM: 74 sq. ft, STORAGE: 114 sq. ft, GARAGE: 1200 sq. ft,
PORCH: 75 sq. ft, PATIO: 743 sq. ft
TOTAL: 2239 sq. ft
MEASUREMENTS CALCULATED BY V1Photos.com ARE DEEMED HIGHLY RELIABLE BUT NOT GUARANTEED.



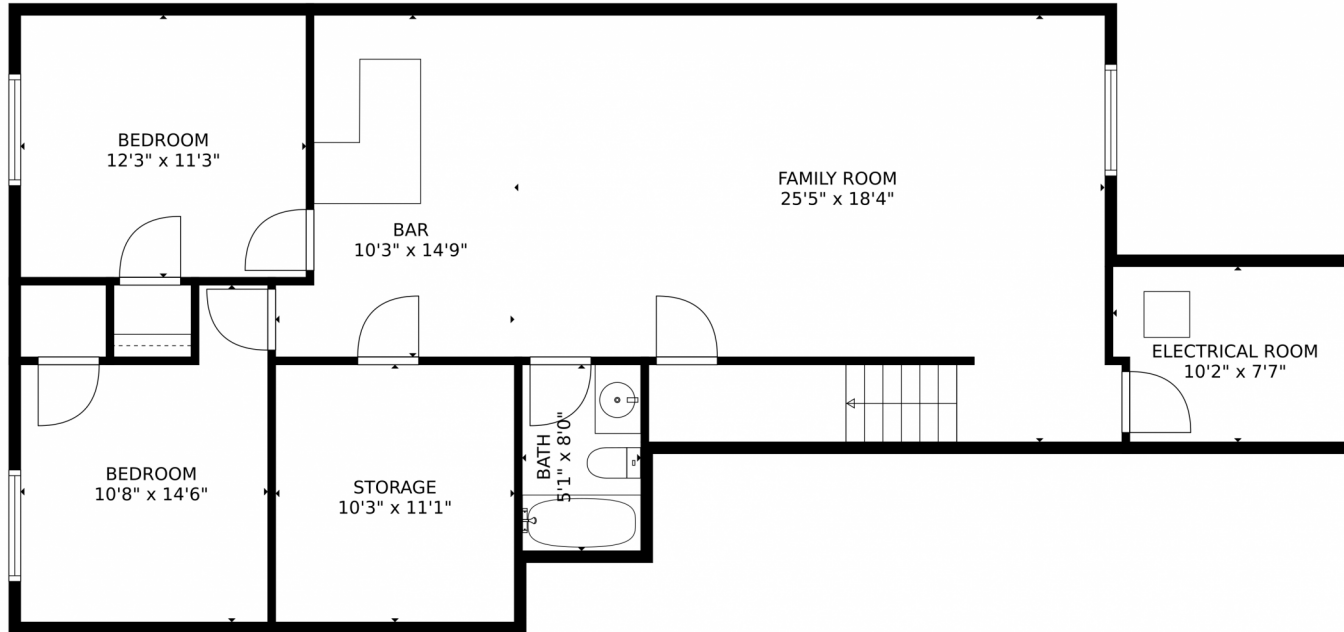
Disclaimer: Sizes and Dimensions are Approximate, Actual May Vary.



Clint Whiting
719-387-9375
clint@greatplains.land
<https://greatplainslandcompany.com/>



227 West Northampton Drive, Pueblo West, CO 81007 – Lower Level



GROSS INTERNAL AREA
Below Ground: 939 sq. ft, FLOOR 2: 1300 sq. ft, FLOOR 3: 0 sq. ft
EXCLUDED AREAS: ELECTRICAL ROOM: 74 sq. ft, STORAGE: 114 sq. ft, GARAGE: 1200 sq. ft,
PORCH: 75 sq. ft, PATIO: 743 sq. ft
TOTAL: 2239 sq. ft
MEASUREMENTS CALCULATED BY V1Photos.COM ARE DEEMED HIGHLY RELIABLE BUT NOT GUARANTEED.

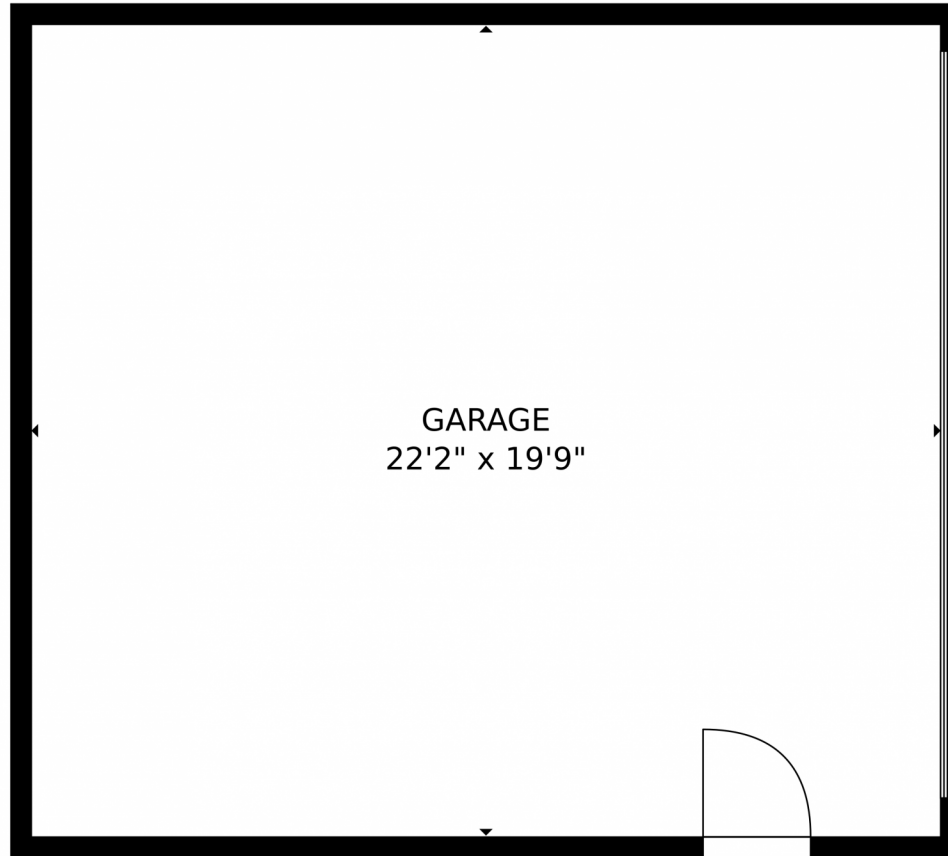


Disclaimer: Sizes and Dimensions are Approximate, Actual May Vary.



Clint Whiting
719-387-9375
clint@greatplains.land
<https://greatplainslandcompany.com/>





GROSS INTERNAL AREA
Below Ground: 939 sq. ft, FLOOR 2: 1300 sq. ft, FLOOR 3: 0 sq. ft
EXCLUDED AREAS: ELECTRICAL ROOM: 74 sq. ft, STORAGE: 114 sq. ft, GARAGE: 1200 sq. ft,
PORCH: 75 sq. ft, PATIO: 743 sq. ft
TOTAL: 2239 sq. ft
MEASUREMENTS CALCULATED BY V1Photos.com ARE DEEMED HIGHLY RELIABLE BUT NOT GUARANTEED.



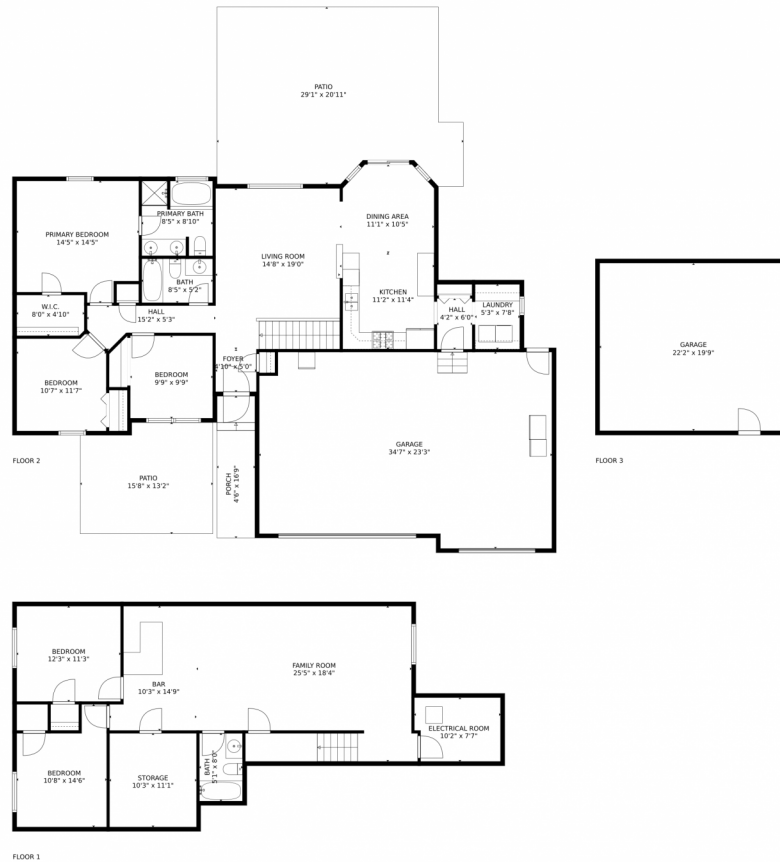
Disclaimer: Sizes and Dimensions are Approximate, Actual May Vary.



Clint Whiting
719-387-9375
clint@greatplains.land
<https://greatplainslandcompany.com/>



227 West Northampton Drive, Pueblo West, CO 81007 – All Levels



GROSS INTERNAL AREA
Below Ground: 939 sq. ft, FLOOR 2: 1300 sq. ft, FLOOR 3: 0 sq. ft
EXCLUDED AREAS: ELECTRICAL ROOM: 74 sq. ft, STORAGE: 114 sq. ft, GARAGE: 1200 sq. ft.
PORCH: 75 sq. ft, PATIO: 743 sq. ft
TOTAL: 2239 sq. ft
MEASUREMENTS CALCULATED BY V1Photos.COM ARE DEEMED HIGHLY RELIABLE BUT NOT GUARANTEED.



Disclaimer: Sizes and Dimensions are Approximate, Actual May Vary.



Clint Whiting
719-387-9375
clint@greatplains.land
<https://greatplainslandcompany.com/>

