



623 Seawell Drive
Colorado Springs, CO 80911
COMMUNITY: Fountain Valley Ranch



Single Family



1500 SQFT



3 Beds



2 Baths



2 Car



0.17 Acre



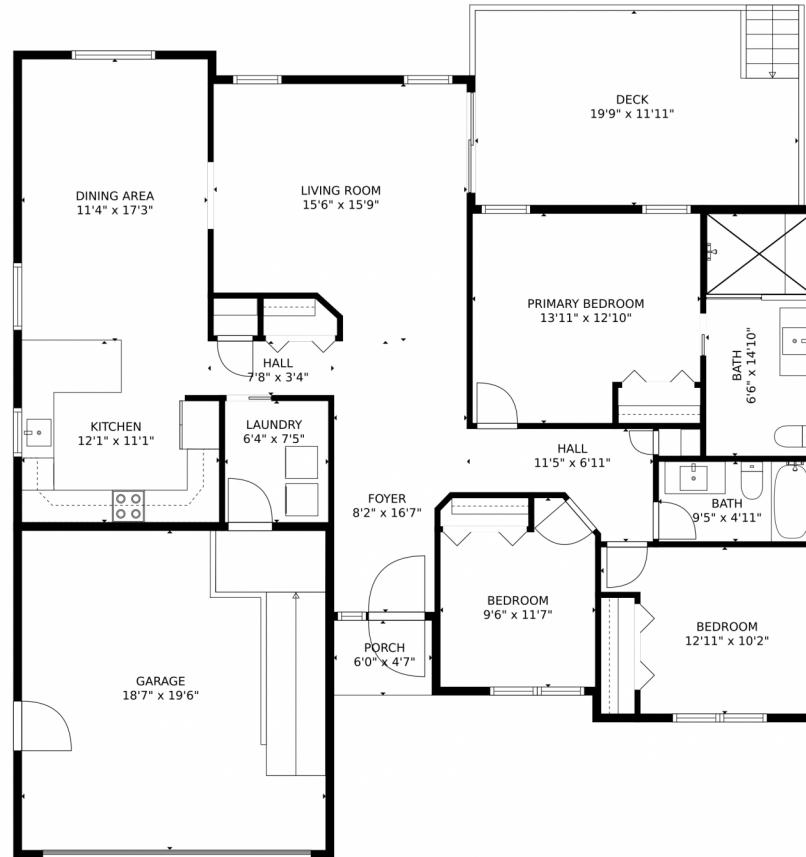
Eddie Hurt
719-339-3765
ehurt@erashields.com
<https://www.ColoradoSpringsRealEstate.com>



Scan code
for more
property
details



623 Seawell Drive, Colorado Springs, CO 80911 – Main Level



GROSS INTERNAL AREA
FLOOR 1: 1431 sq. ft.
EXCLUDED AREAS: GARAGE: 363 sq. ft, DECK: 236 sq. ft, PORCH: 27 sq. ft.
TOTAL: 1431 sq. ft.
MEASUREMENTS CALCULATED BY V1Photos.com ARE DEEMED HIGHLY RELIABLE BUT NOT GUARANTEED.



Disclaimer: Sizes and Dimensions are Approximate, Actual May Vary.



Eddie Hurt

719-339-3765

ehurt@erashields.com

<https://www.ColoradoSpringsRealEstate.com>



Scan code
for more
property
details

