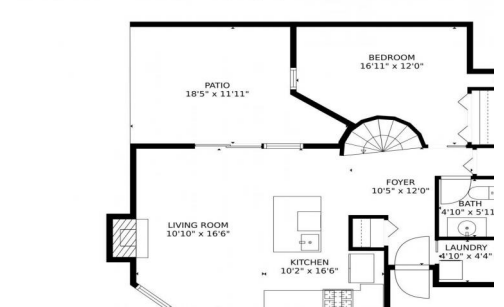




2378 Hearth Dr. #13 note #13 on front door, Evergreen, CO 80439 - Main Level



Single Family 1250 SQFT 3 Beds 1/1 Baths 0.02 Acre

PROPERTY DETAILS

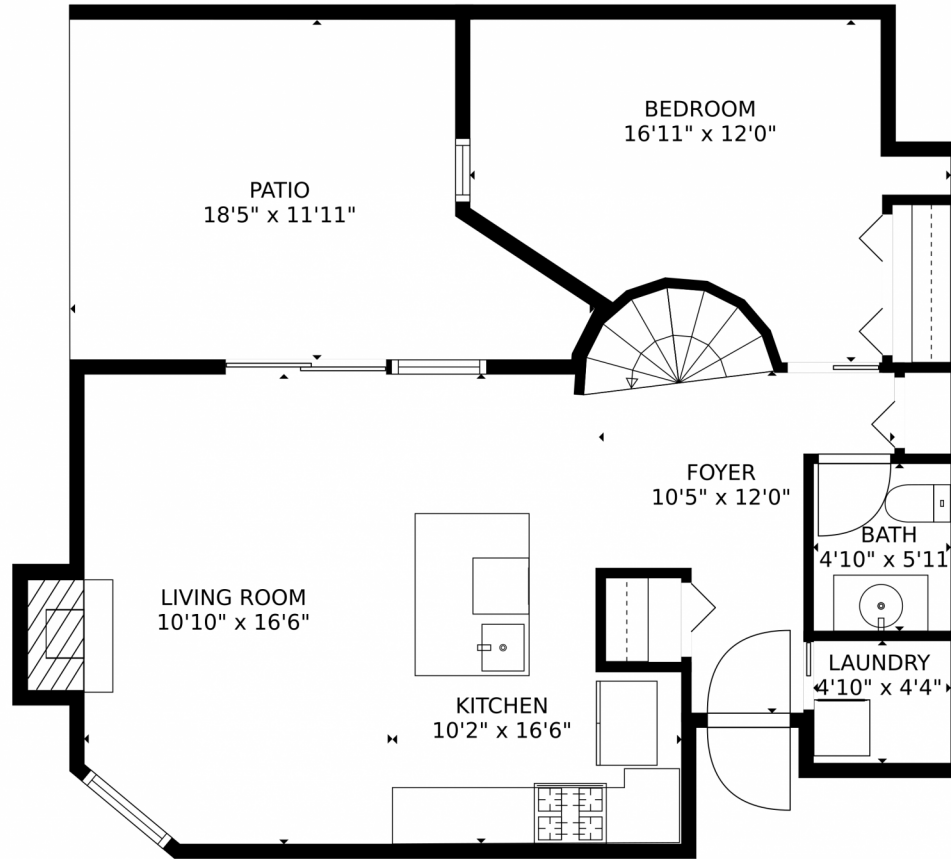
Prime Location Hiwan Golf Club!



Peg Schroeder
303-885-4404
peg@tuppersteam.com



2378 Hearth Dr. #13, Evergreen, CO 80439 – Main Level



GROSS INTERNAL AREA
FLOOR 1: 644 sq. ft, FLOOR 2: 453 sq. ft
EXCLUDED AREAS: PATIO: 178 sq. ft
FIREPLACE: 6 sq. ft
OPEN TO BELOW: 221 sq. ft
TOTAL: 1097 sq. ft

MEASUREMENTS CALCULATED BY V1Photos.COM ARE DEEMED HIGHLY RELIABLE BUT NOT GUARANTEED.



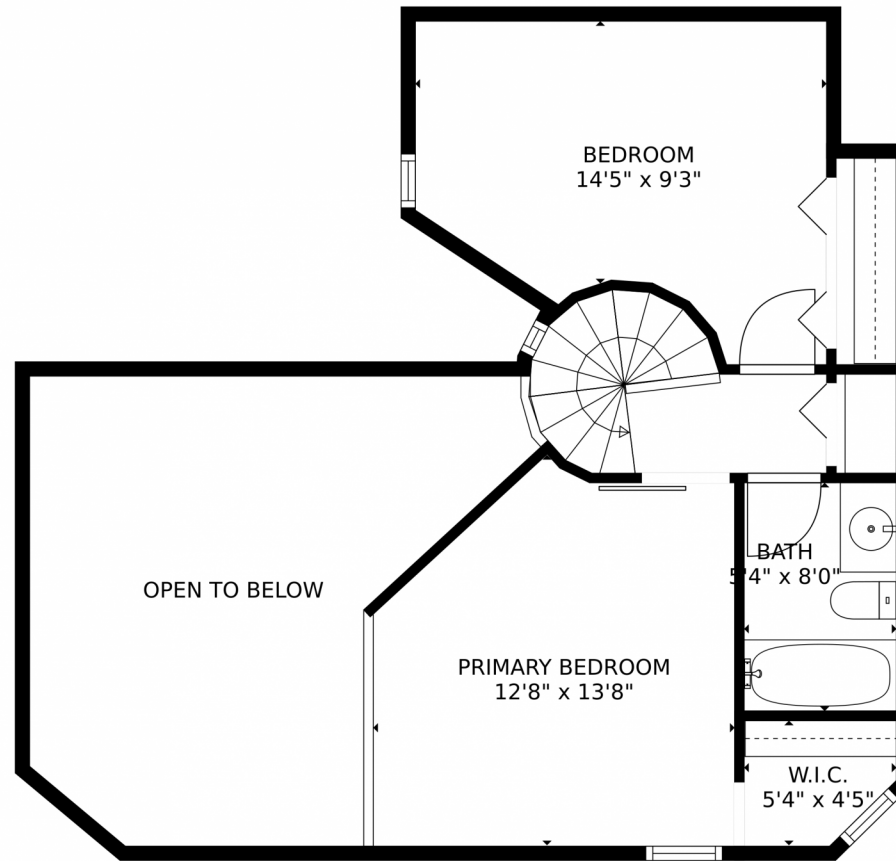
Disclaimer: Sizes and Dimensions are Approximate, Actual May Vary.



Peg Schroeder
303-885-4404
peg@tuppersteam.com



2378 Hearth Dr. #13, Evergreen, CO 80439 – Upper Level



GROSS INTERNAL AREA
FLOOR 1: 644 sq. ft, FLOOR 2: 453 sq. ft
EXCLUDED AREAS: PATIO: 178 sq. ft
FIREPLACE: 6 sq. ft
OPEN TO BELOW: 221 sq. ft
TOTAL: 1097 sq. ft

MEASUREMENTS CALCULATED BY V1Photos.COM ARE DEEMED HIGHLY RELIABLE BUT NOT GUARANTEED.



Disclaimer: Sizes and Dimensions are Approximate, Actual May Vary.



Peg Schroeder
303-885-4404
peg@tuppersteam.com

