



2091 S Richfield Street
 Aurora, CO 80013
 COMMUNITY: Aurora Highlands

MLS # 9864695
 PRICE \$482,500

Charming, Meticulously Maintained 4B/3B Home on Corner Lot!



Single Family



1580 SQFT



4 Beds



3 Baths



2 Car



0.16 Acre

PROPERTY DETAILS

Don't miss the opportunity to own this charming, meticulously maintained home situated on a spacious corner lot in the desirable Aurora Highlands neighborhood. This turn-key tri-level home boasts four bedrooms and three bathrooms, providing ample space for comfortable living.

Step inside to discover a welcoming main level featuring an open kitchen, cozy living room, and dining room. The dining area looks out to the covered patio and expansive, well-manicured backyard, creating the perfect setting for gatherings with friends and family. The front and back yards have been beautifully landscaped and are equipped with sprinklers. Upstairs, you'll find three bedrooms, including the primary, with an ensuite 3/4 bath featuring a new shower enclosure. The lower level of the house features a spacious family room, another generously sized bedroom, and a full bath with laundry facilities.

****Pride of ownership shines throughout this home, as it has been lovingly cared for and is ready for its new owners to move in and create lasting memories.****

Location is key, and this property is conveniently situated only one mile away from the Light Rail, and just a few blocks from



Stephanie Gunther
 303-669-7766
 realestate@stephaniegunther.com



Scan code
 for more
 property
 details



grocery stores, shopping centers, restaurants, and schools. Commuting is a breeze with close proximity to Buckley AFB, DIA, I-225, and I-70.

Don't let this Aurora Highlands gem slip away! Be sure to click the Virtual Tour link to experience a 3D walkthrough.



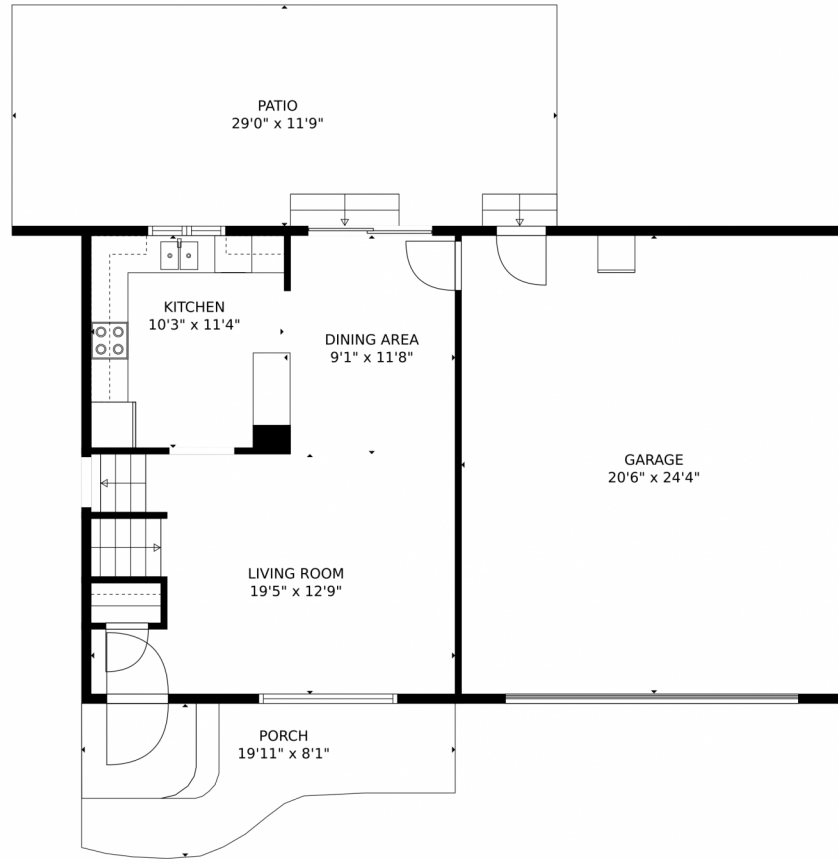
Stephanie Gunther
303-669-7766
realestate@stephaniegunther.com



Scan code
for more
property
details



2091 S Richfield Street, Aurora, CO 80013 – Main Level



GROSS INTERNAL AREA
Below Ground: 470 sq. ft. FLOOR 2: 473 sq. ft. FLOOR 3: 546 sq. ft.
EXCLUDED AREAS: CRAWL SPACE: 467 sq. ft.
PORCH: 126 sq. ft.
PATIO: 341 sq. ft.
GARAGE: 500 sq. ft.
TOTAL: 1489 sq. ft.
MEASUREMENTS CALCULATED BY V1Photos.com ARE DEEMED HIGHLY RELIABLE BUT NOT GUARANTEED.



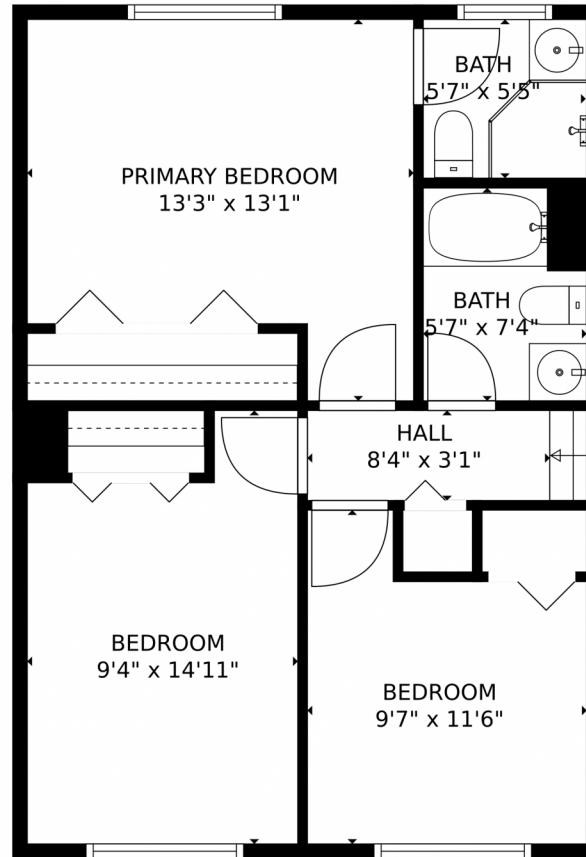
Disclaimer: Sizes and Dimensions are Approximate, Actual May Vary.



Stephanie Gunther
303-669-7766
realestate@stephaniegunther.com



2091 S Richfield Street, Aurora, CO 80013 – Second Level



GROSS INTERNAL AREA
Below Ground: 470 sq. ft. FLOOR 2: 473 sq. ft. FLOOR 3: 546 sq. ft.
EXCLUDED AREAS: CRAWL SPACE: 467 sq. ft.
PORCH: 126 sq. ft.
PATIO: 341 sq. ft.
GARAGE: 500 sq. ft.
TOTAL: 1489 sq. ft.
MEASUREMENTS CALCULATED BY V1Photos.com ARE DEEMED HIGHLY RELIABLE BUT NOT GUARANTEED.



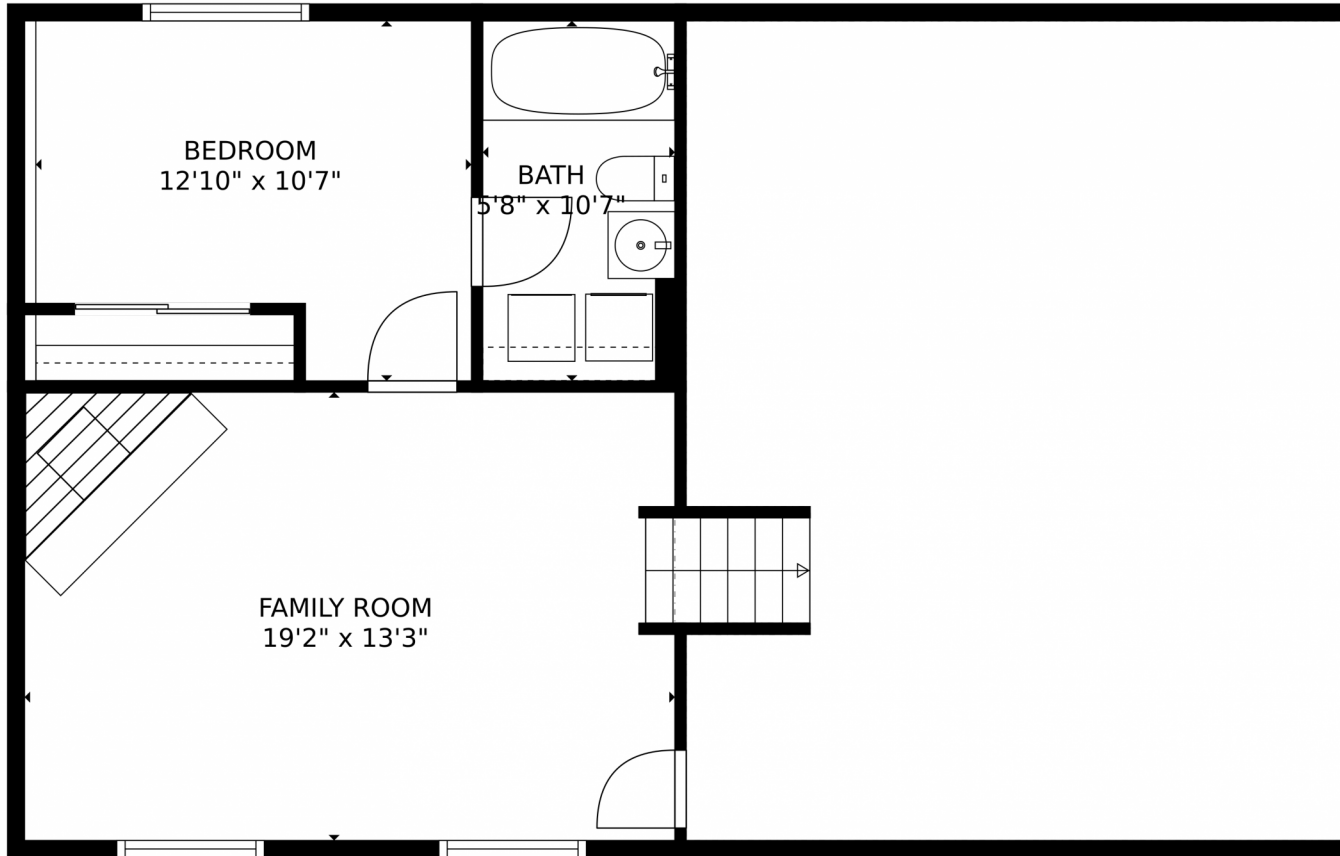
Disclaimer: Sizes and Dimensions are Approximate, Actual May Vary.



Stephanie Gunther
303-669-7766
realestate@stephaniegunther.com



2091 S Richfield Street, Aurora, CO 80013 – Basement



GROSS INTERNAL AREA
Below Ground: 470 sq. ft. FLOOR 2: 473 sq. ft. FLOOR 3: 546 sq. ft.
EXCLUDED AREAS: CRAWL SPACE: 467 sq. ft.
PORCH: 126 sq. ft.
PATIO: 341 sq. ft.
GARAGE: 500 sq. ft.
TOTAL: 1489 sq. ft.
MEASUREMENTS CALCULATED BY V1Photos.COM ARE DEEMED HIGHLY RELIABLE BUT NOT GUARANTEED.



Disclaimer: Sizes and Dimensions are Approximate, Actual May Vary.



Stephanie Gunther
303-669-7766
realestate@stephaniegunther.com



2091 S Richfield Street, Aurora, CO 80013 – All Levels



GROSS INTERNAL AREA
Below Ground: 470 sq. ft. FLOOR 2: 473 sq. ft. FLOOR 3: 546 sq. ft.
EXCLUDED AREAS: CRAWL SPACE: 467 sq. ft.
PORCH: 126 sq. ft.
PATIO: 341 sq. ft.
GARAGE: 500 sq. ft.
TOTAL: 1489 sq. ft.

MEASUREMENTS CALCULATED BY V1Photos.com ARE DEEMED HIGHLY RELIABLE BUT NOT GUARANTEED.



Disclaimer: Sizes and Dimensions are Approximate, Actual May Vary.



Stephanie Gunther
303-669-7766
realestate@stephaniegunther.com

