



9793 E 112th Drive
Commerce City, CO 80640

PRICE \$520,000



Single Family



2624 SQFT



4 Beds



2/1 Baths



2 Car



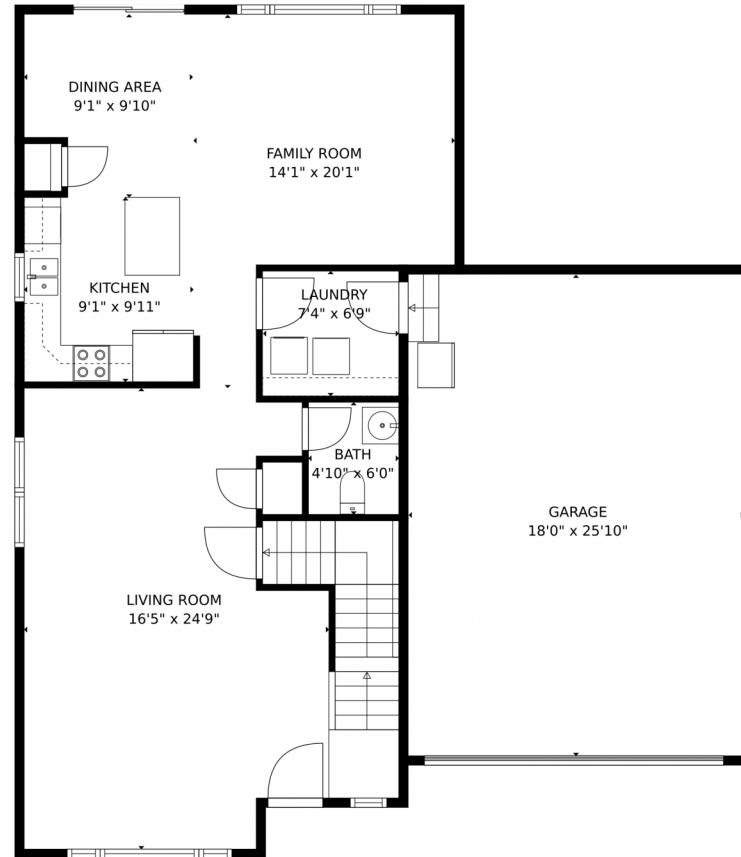
Anna Smouse
720-422-6327
smouseanna@gmail.com



Scan code
for more
property
details



9793 E 112th Drive, Commerce City, CO 80640 — Main Level



GROSS INTERNAL AREA
Below Ground: 0 sq. ft, FLOOR 2: 924 sq. ft, FLOOR 3: 926 sq. ft
EXCLUDED AREAS: UNFINISHED BASEMENT: 906 sq. ft, GARAGE: 467 sq. ft, OPEN TO BELOW: 40 sq. ft
TOTAL: 1850 sq. ft
MEASUREMENTS CALCULATED BY V1Photos.COM ARE DEEMED HIGHLY RELIABLE BUT NOT GUARANTEED.



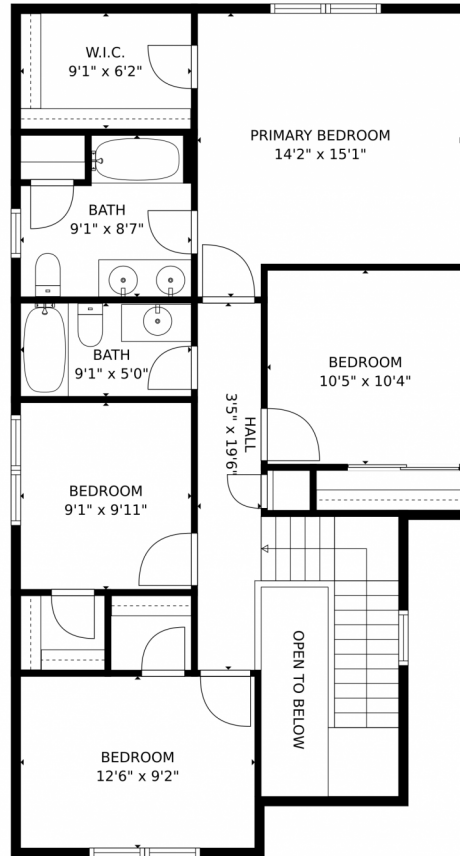
Disclaimer: Sizes and Dimensions are Approximate, Actual May Vary.



Anna Smouse
720-422-6327
smouseanna@gmail.com



9793 E 112th Drive, Commerce City, CO 80640 — Second Level



GROSS INTERNAL AREA
Below Ground: 0 sq. ft, FLOOR 2: 924 sq. ft, FLOOR 3: 926 sq. ft
EXCLUDED AREAS: UNFINISHED BASEMENT: 906 sq. ft, GARAGE: 467 sq. ft, OPEN TO BELOW: 40 sq. ft
TOTAL: 1850 sq. ft
MEASUREMENTS CALCULATED BY V1Photos.com ARE DEEMED HIGHLY RELIABLE BUT NOT GUARANTEED.

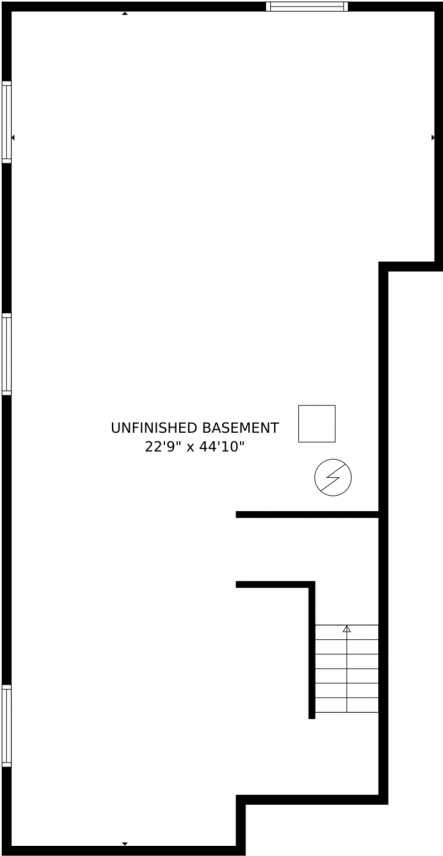


Disclaimer: Sizes and Dimensions are Approximate, Actual May Vary.



Anna Smouse
720-422-6327
smouseanna@gmail.com





GROSS INTERNAL AREA
Below Ground: 0 sq. ft, FLOOR 2: 924 sq. ft, FLOOR 3: 926 sq. ft
EXCLUDED AREAS: UNFINISHED BASEMENT: 906 sq. ft, GARAGE: 467 sq. ft, OPEN TO BELOW: 40 sq. ft
TOTAL: 1850 sq. ft
MEASUREMENTS CALCULATED BY V1Photos.com ARE DEEMED HIGHLY RELIABLE BUT NOT GUARANTEED.



Disclaimer: Sizes and Dimensions are Approximate, Actual May Vary.



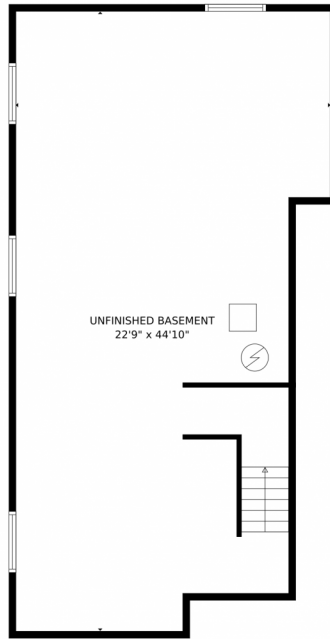
Anna Smouse
720-422-6327
smouseanna@gmail.com



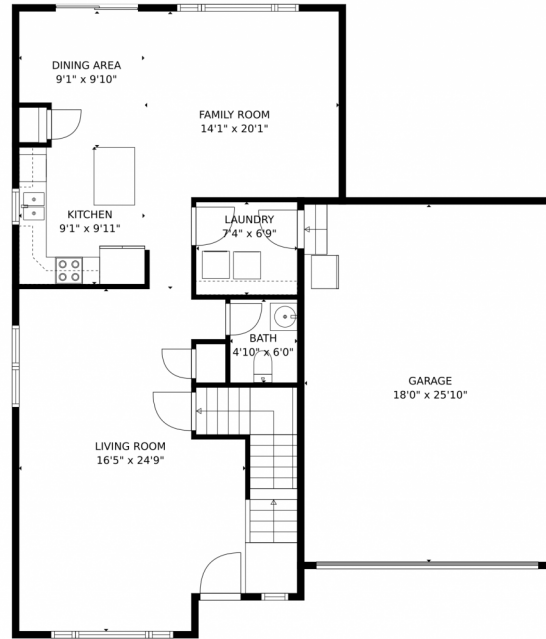
Scan code for more property details

A QR code is positioned to the right of the text. To the left of the QR code is a small icon of a smartphone with a green checkmark on its screen.

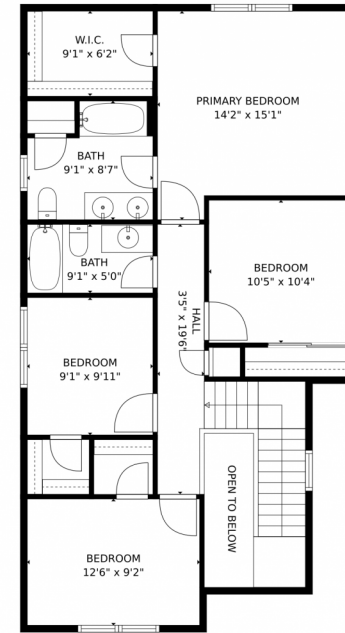
9793 E 112th Drive, Commerce City, CO 80640 – All Levels



FLOOR 1



FLOOR 2



FLOOR 3

GROSS INTERNAL AREA
Below Ground: 0 sq. ft, FLOOR 2: 924 sq. ft, FLOOR 3: 926 sq. ft
EXCLUDED AREAS: UNFINISHED BASEMENT: 906 sq. ft, GARAGE: 467 sq. ft, OPEN TO BELOW: 40 sq. ft
TOTAL: 1850 sq. ft
MEASUREMENTS CALCULATED BY V1Photos.COM ARE DEEMED HIGHLY RELIABLE BUT NOT GUARANTEED.



Disclaimer: Sizes and Dimensions are Approximate, Actual May Vary.



Anna Smouse
720-422-6327
smouseanna@gmail.com

