



Single Family



2156 SQFT



3 Beds



2/1 Baths



2 Car



0.14 Acre

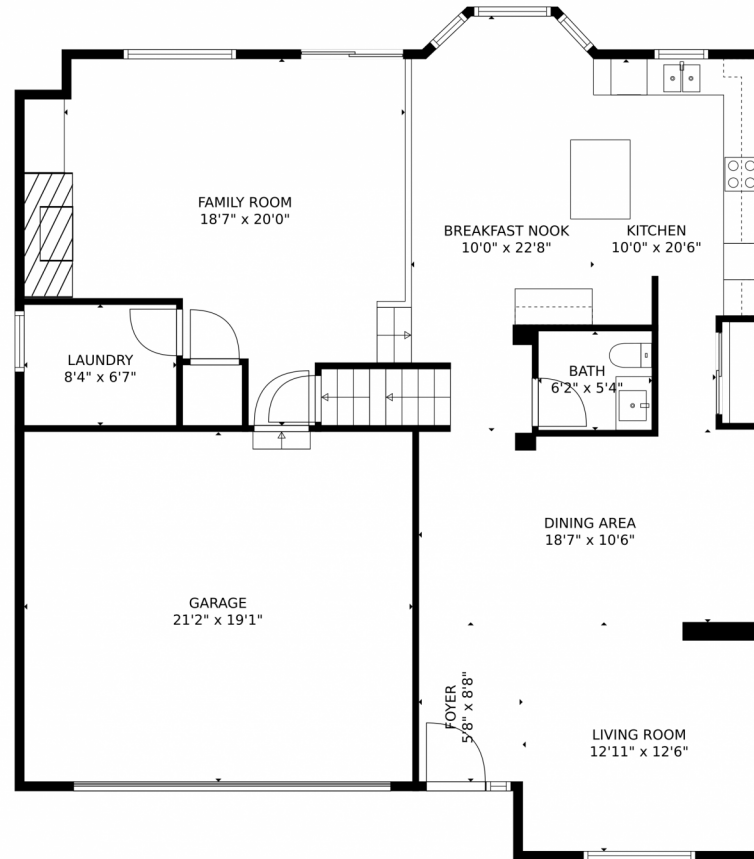
Juan Alvarez  
719-396-5118  
Jalvarez@wedgewood-inc.com



Scan code  
for more  
property  
details



# 3423 Watada Street, Brighton, CO 80601 – Main Level



GROSS INTERNAL AREA  
Below Ground: 0 sq. ft, FLOOR 2: 1221 sq. ft, FLOOR 3: 1019 sq. ft  
EXCLUDED AREAS: UNFINISHED BASEMENT: 726 sq. ft, GARAGE: 404 sq. ft, OPEN TO BELOW: 212 sq. ft  
TOTAL: 2240 sq. ft  
MEASUREMENTS CALCULATED BY V1Photos.com ARE DEEMED HIGHLY RELIABLE BUT NOT GUARANTEED.

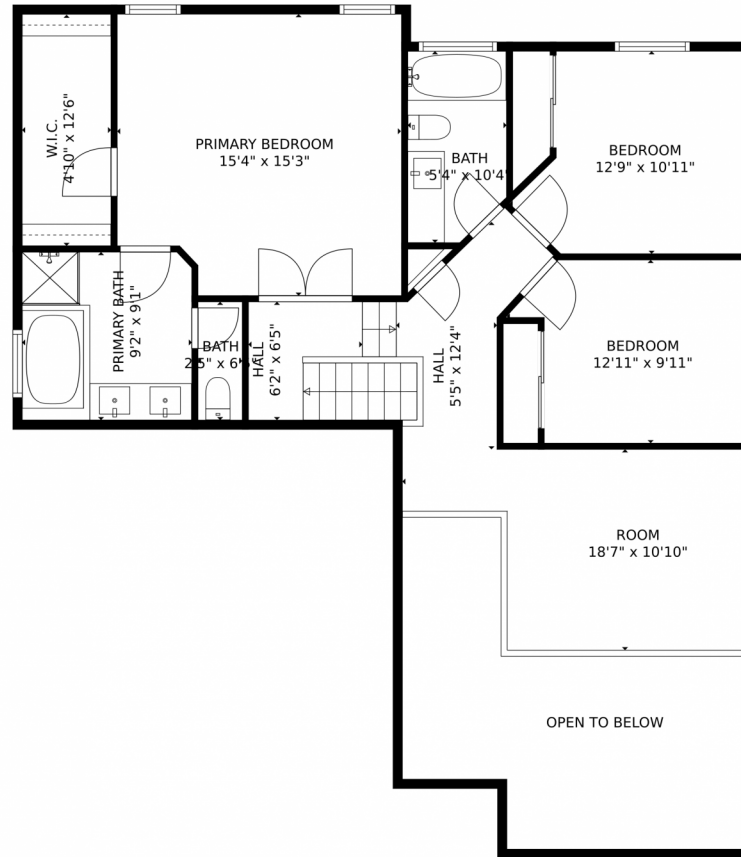


Disclaimer: Sizes and Dimensions are Approximate, Actual May Vary.

Juan Alvarez  
719-396-5118  
jalvarez@wedgewood-inc.com



# 3423 Watada Street, Brighton, CO 80601 – Upper Level

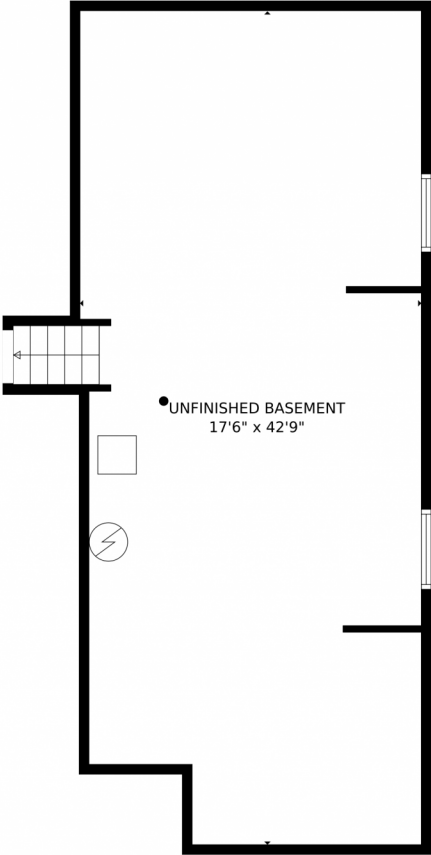


GROSS INTERNAL AREA  
Below Ground: 0 sq. ft, FLOOR 2: 1221 sq. ft, FLOOR 3: 1019 sq. ft  
EXCLUDED AREAS: UNFINISHED BASEMENT: 726 sq. ft, GARAGE: 404 sq. ft, OPEN TO BELOW: 212 sq. ft  
TOTAL: 2240 sq. ft  
MEASUREMENTS CALCULATED BY V1Photos.com ARE DEEMED HIGHLY RELIABLE BUT NOT GUARANTEED.

Disclaimer: Sizes and Dimensions are Approximate, Actual May Vary.

Juan Alvarez  
719-396-5118  
jalvarez@wedgewood-inc.com



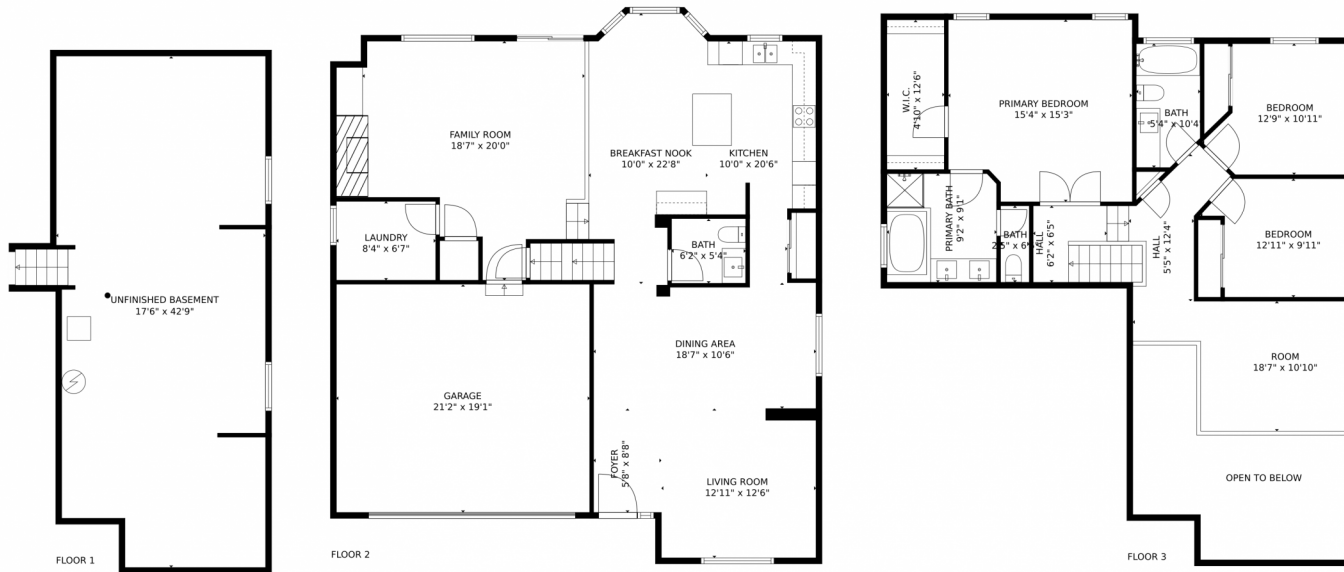


GROSS INTERNAL AREA  
Below Ground: 0 sq. ft, FLOOR 2: 1221 sq. ft, FLOOR 3: 1019 sq. ft  
EXCLUDED AREAS: UNFINISHED BASEMENT: 726 sq. ft, GARAGE: 404 sq. ft, OPEN TO BELOW: 212 sq. ft  
TOTAL: 2240 sq. ft  
MEASUREMENTS CALCULATED BY V1Photos.com ARE DEEMED HIGHLY RELIABLE BUT NOT GUARANTEED.



Disclaimer: Sizes and Dimensions are Approximate, Actual May Vary.

# 3423 Watada Street, Brighton, CO 80601 – All Levels



GROSS INTERNAL AREA  
Below Ground: 0 sq. ft, FLOOR 2: 1221 sq. ft, FLOOR 3: 1019 sq. ft  
EXCLUDED AREAS: UNFINISHED BASEMENT: 726 sq. ft, GARAGE: 404 sq. ft, OPEN TO BELOW: 212 sq. ft  
TOTAL: 2240 sq. ft  
MEASUREMENTS CALCULATED BY V1Photos.COM ARE DEEMED HIGHLY RELIABLE BUT NOT GUARANTEED.



Disclaimer: Sizes and Dimensions are Approximate, Actual May Vary.

Juan Alvarez  
719-396-5118  
Jalvarez@wedgewood-inc.com

