




3228 Grand View Drive  
Greeley, CO 80631  
COMMUNITY: Sonny View Estates



 Single Family

 2900 SQFT

 4 Beds

 2 Baths

 3 Car

 0.97 Acre



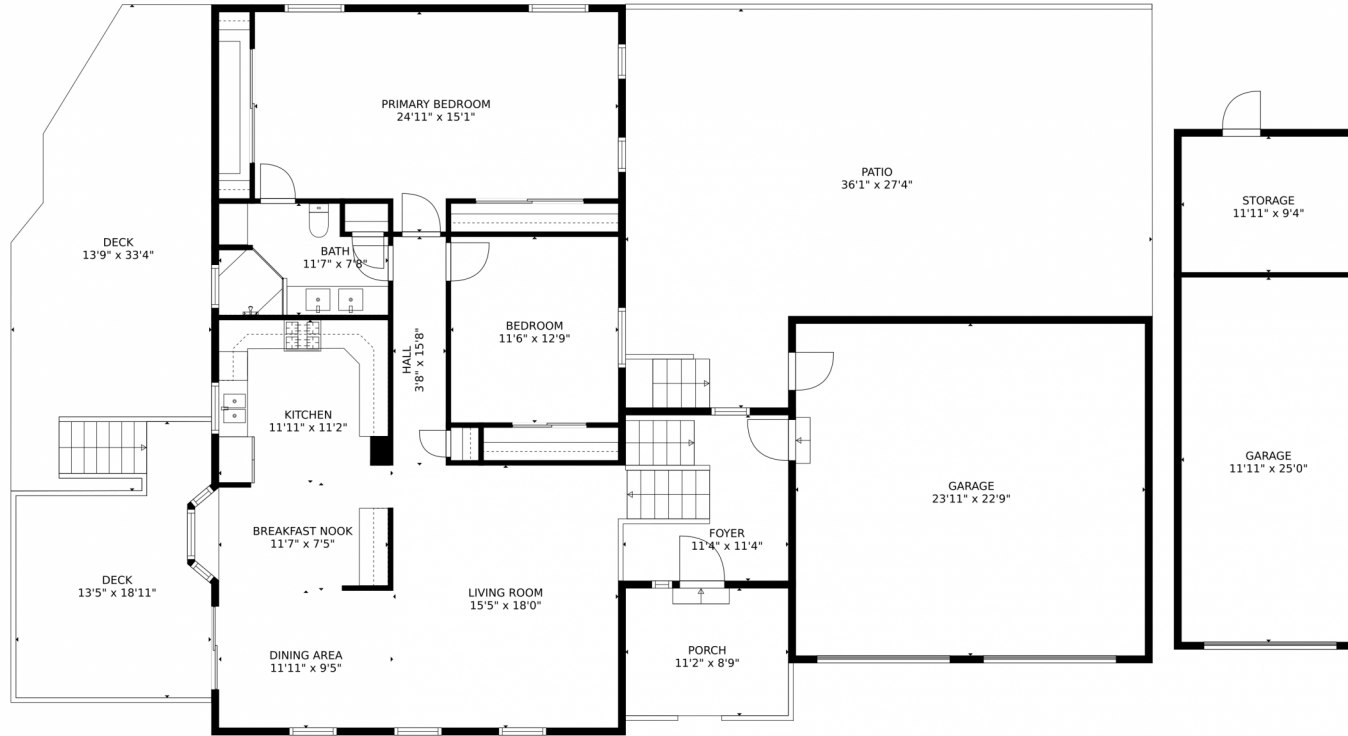
**Brian Franzen**  
970-301-0266  
brian@briansellsnoco.com



Scan code  
for more  
property  
details



# 3228 Grand View Drive, Greeley, CO 80631 — Main Level



GROSS INTERNAL AREA  
Below Ground: 1266 sq. ft, FLOOR 2: 1484 sq. ft  
EXCLUDED AREAS: UNDEFINED: 19 sq. ft, FIREPLACE: 13 sq. ft, STORAGE: 111 sq. ft,  
GARAGE: 844 sq. ft, PORCH: 98 sq. ft, DECK: 552 sq. ft,  
PATIO: 842 sq. ft  
TOTAL: 2750 sq. ft  
MEASUREMENTS CALCULATED BY V1Photos.COM ARE DEEMED HIGHLY RELIABLE BUT NOT GUARANTEED.



Disclaimer: Sizes and Dimensions are Approximate, Actual May Vary.



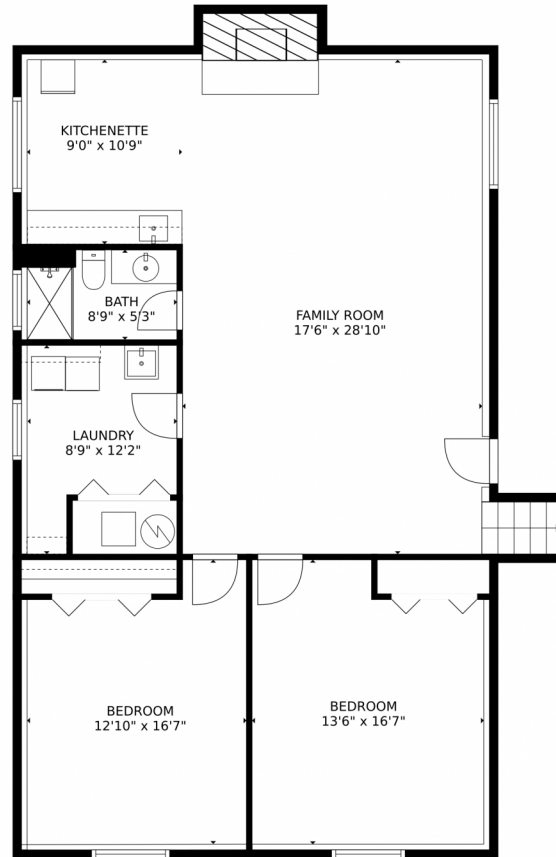
**Brian Franzen**  
970-301-0266  
brian@briansellsnoco.com



Scan code  
for more  
property  
details



# 3228 Grand View Drive, Greeley, CO 80631 — Lower Level



GROSS INTERNAL AREA  
Below Ground: 1266 sq. ft, FLOOR 2: 1484 sq. ft.  
EXCLUDED AREAS: UNDEFINED: 19 sq. ft, FIREPLACE: 13 sq. ft, STORAGE: 111 sq. ft,  
GARAGE: 844 sq. ft, PORCH: 98 sq. ft, DECK: 552 sq. ft,  
PATIO: 842 sq. ft  
TOTAL: 2750 sq. ft  
MEASUREMENTS CALCULATED BY V1Photos.com ARE DEEMED HIGHLY RELIABLE BUT NOT GUARANTEED.

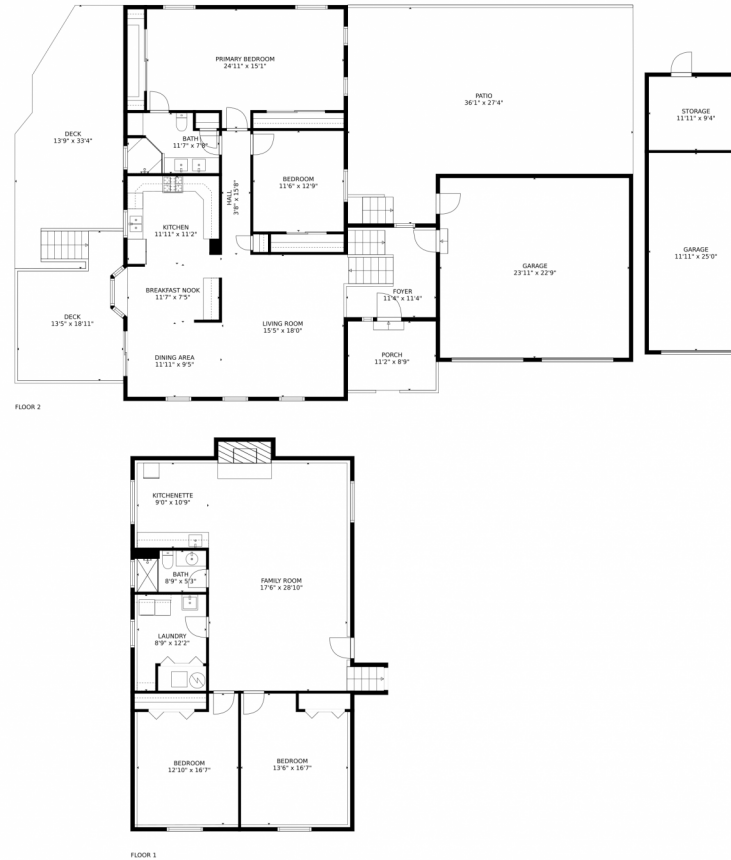
Disclaimer: Sizes and Dimensions are Approximate, Actual May Vary.



**Brian Franzen**  
970-301-0266  
brian@briansellsnoco.com



# 3228 Grand View Drive, Greeley, CO 80631 — All Levels



GROSS INTERNAL AREA  
Below Ground: 1266 sq. ft, FLOOR 2: 1484 sq. ft  
EXCLUDED AREAS: UNDEFINED: 19 sq. ft, FIREPLACE: 13 sq. ft, STORAGE: 111 sq. ft,  
GARAGE: 844 sq. ft, PORCH: 98 sq. ft, DECK: 552 sq. ft,  
PATIO: 842 sq. ft  
TOTAL: 2750 sq. ft  
MEASUREMENTS CALCULATED BY V1Photos.com ARE DEEMED HIGHLY RELIABLE BUT NOT GUARANTEED.



Disclaimer: Sizes and Dimensions are Approximate, Actual May Vary.



**Brian Franzen**  
970-301-0266  
brian@briansellsnoco.com

