



5750 Crossview Drive, Fort Collins, CO 80528 - Main Level



 Single Family
  5203 SQFT
  5 Beds
  5 Baths
  3 Car
  0.19 Acre

## PROPERTY DETAILS

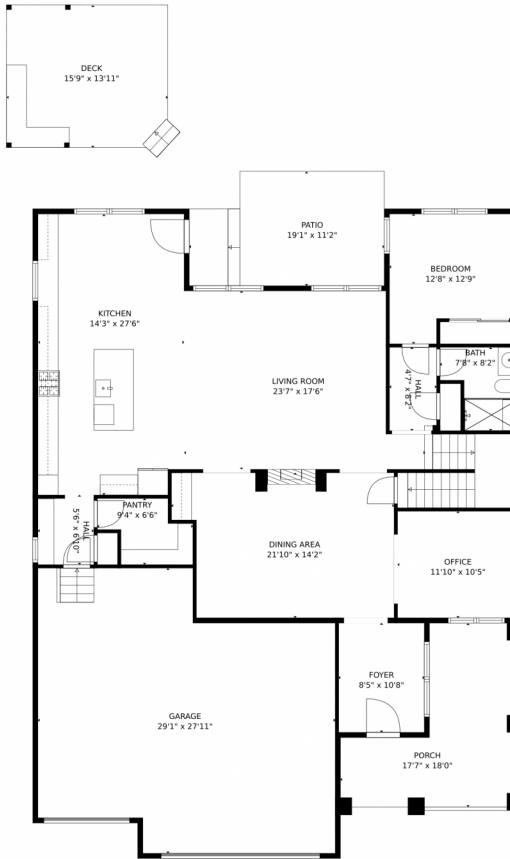
Back on market! No fault of home or sellers. This home in the very desirable Kechter Crossing has it all. This beautifully appointed home has so many extras such as programmable power window coverings and light switches, custom light fixtures, pool table, TV/movie projector and screen in the basement, and an extensive cabinet and tool storage system in the garage. This home sits within minutes of Bacon Elementary, Preston Junior High, Kinard Middle School and Fossil Lake High School. New carpet June 2023 and New Roof 2018. The TV in the garage, wet bar and loft are included as well.



**Lindsey Crisanti**  
970-420-4498  
lindseyc@windermere.com



# 5750 Crossview Drive, Fort Collins, CO 80528 – Main Level



GROSS INTERNAL AREA  
Below Ground: 941 sq. ft, FLOOR 2: 1722 sq. ft, FLOOR 3: 1675 sq. ft  
EXCLUDED AREAS: UNFINISHED BASEMENT: 634 sq. ft, GARAGE: 702 sq. ft, PATIO: 196 sq. ft,  
DECK: 223 sq. ft, PORCH: 219 sq. ft, OPEN TO BELOW: 340 sq. ft  
TOTAL: 4338 sq. ft  
MEASUREMENTS CALCULATED BY V1Photos.com ARE DEEMED HIGHLY RELIABLE BUT NOT GUARANTEED.



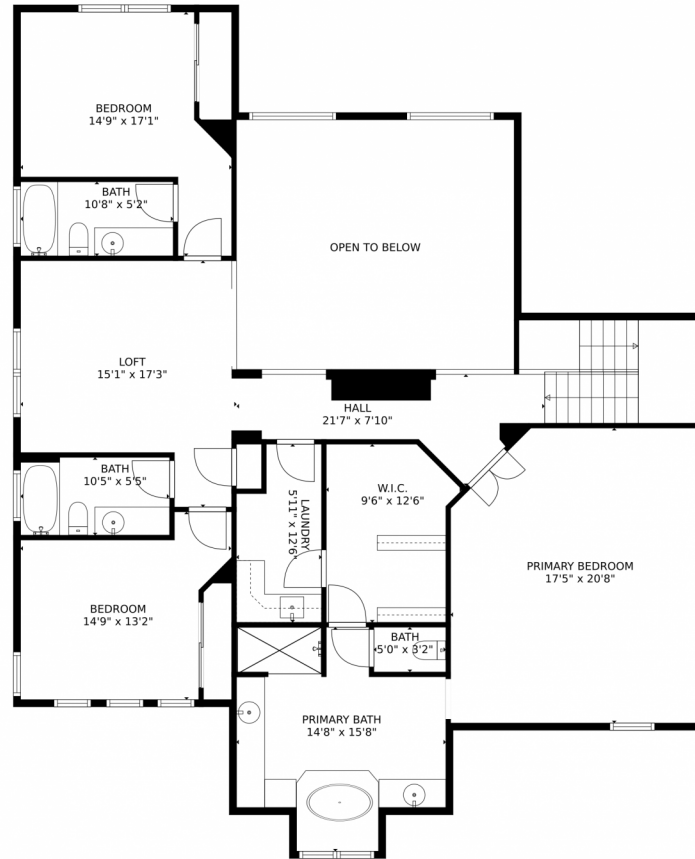
Disclaimer: Sizes and Dimensions are Approximate, Actual May Vary.



Lindsey Crisanti  
970-420-4498  
lindseyc@windermere.com



# 5750 Crossview Drive, Fort Collins, CO 80528 – Upper Level



GROSS INTERNAL AREA  
Below Ground: 941 sq. ft, FLOOR 2: 1722 sq. ft, FLOOR 3: 1675 sq. ft  
EXCLUDED AREAS: UNFINISHED BASEMENT: 634 sq. ft, GARAGE: 702 sq. ft, PATIO: 196 sq. ft,  
DECK: 223 sq. ft, PORCH: 219 sq. ft, OPEN TO BELOW: 340 sq. ft  
TOTAL: 4338 sq. ft  
MEASUREMENTS CALCULATED BY V1Photos.com ARE DEEMED HIGHLY RELIABLE BUT NOT GUARANTEED.



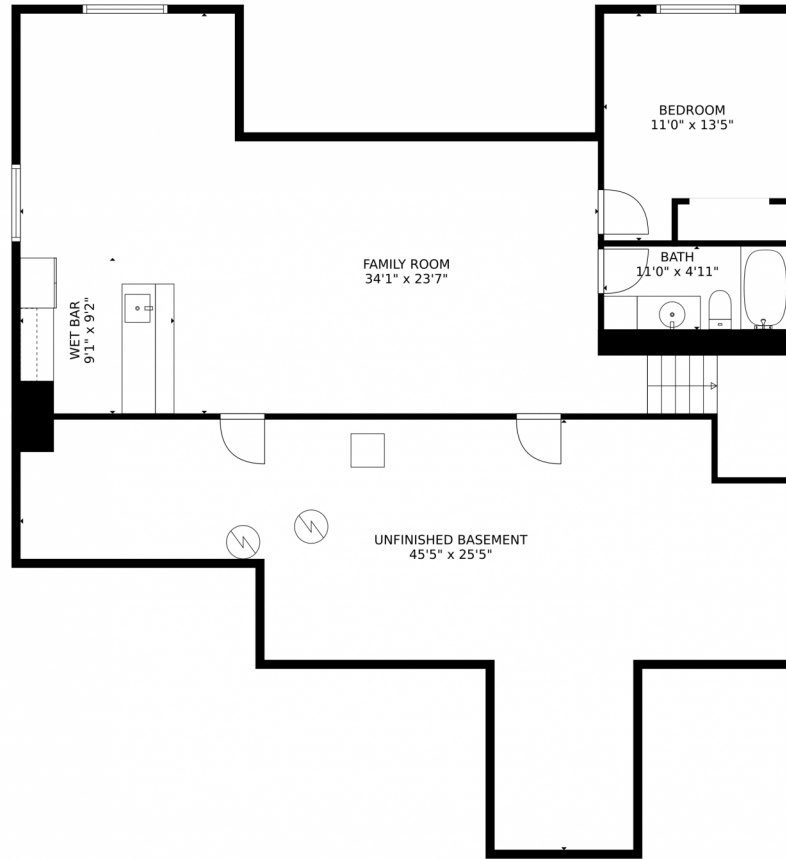
Disclaimer: Sizes and Dimensions are Approximate, Actual May Vary.



Lindsey Crisanti  
970-420-4498  
lindseyc@windermere.com



# 5750 Crossview Drive, Fort Collins, CO 80528 – Lower Level



GROSS INTERNAL AREA  
Below Ground: 941 sq. ft, FLOOR 2: 1722 sq. ft, FLOOR 3: 1675 sq. ft  
EXCLUDED AREAS: UNFINISHED BASEMENT: 634 sq. ft, GARAGE: 702 sq. ft, PATIO: 196 sq. ft,  
DECK: 223 sq. ft, PORCH: 219 sq. ft, OPEN TO BELOW: 340 sq. ft  
TOTAL: 4338 sq. ft  
MEASUREMENTS CALCULATED BY V1Photos.com ARE DEEMED HIGHLY RELIABLE BUT NOT GUARANTEED.



Disclaimer: Sizes and Dimensions are Approximate, Actual May Vary.



Lindsey Crisanti  
970-420-4498  
lindseyc@windermere.com



# 5750 Crossview Drive, Fort Collins, CO 80528 – All Levels



GROSS INTERNAL AREA  
Below Ground: 941 sq. ft, FLOOR 2: 1722 sq. ft, FLOOR 3: 1675 sq. ft  
EXCLUDED AREAS: UNFINISHED BASEMENT: 634 sq. ft, GARAGE: 702 sq. ft, PATIO: 196 sq. ft,  
DECK: 223 sq. ft, PORCH: 219 sq. ft, OPEN TO BELOW: 340 sq. ft  
TOTAL: 4338 sq. ft  
MEASUREMENTS CALCULATED BY V1Photos.COM ARE DEEMED HIGHLY RELIABLE BUT NOT GUARANTEED.



Disclaimer: Sizes and Dimensions are Approximate, Actual May Vary.



Lindsey Crisanti  
970-420-4498  
lindseyc@windermere.com

