



1768 Augustine Drive
 Castle Rock, CO 80108
 COMMUNITY: Terrain

MLS # 7113572



1768 Augustine Drive, Castle Rock, CO 80108 - All Levels



Single Family 3604 SQFT 4 Beds 4/1 Baths 3 Car 0.21 Acre

PROPERTY DETAILS

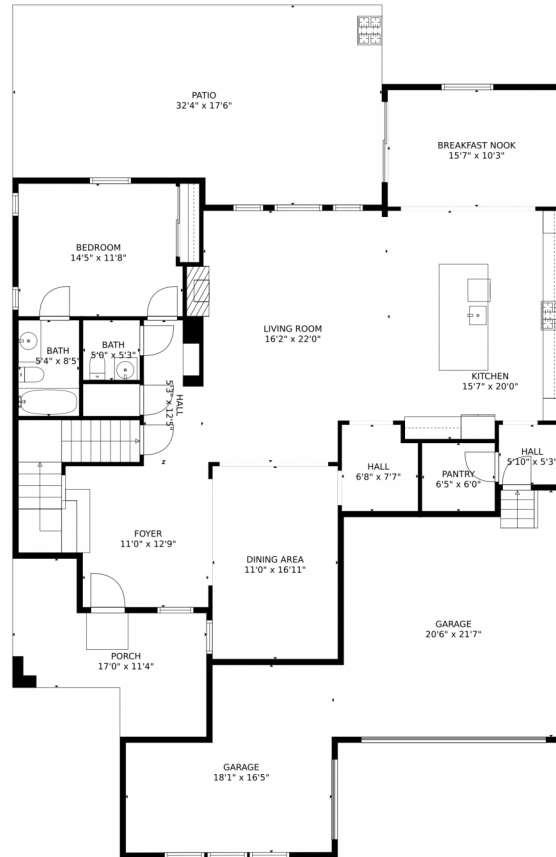
Elegant Two Story built in 2019 by Taylor Morrison. Keystone Model 11. Large Corner Lot. Features a grand two-story with stunning open staircase, formal dining and main floor guest bedroom or office with a private en-suite bath. Two story Vaulted Ceiling and cozy floor to ceiling gas fireplace. Gourmet Kitchen, massive walk in pantry and butlers pantry. 4 Bedrooms and 5 baths. 5, 445 Square Feet. Partial unfinished basement ready to finish. 3 Car Side load garage. Pool community, lots of parks and trails. Close to Shopping.



Julie Mostek
 303-913-9234
 jamostek@gmail.com



1768 Augustine Drive, Castle Rock, CO 80108 – Main Level



GROSS INTERNAL AREA
Below Ground: 0 sq. ft, FLOOR 2: 1710 sq. ft, FLOOR 3: 1636 sq. ft
EXCLUDED AREAS: LOW CEILING: 547 sq. ft, UNFINISHED BASEMENT: 892 sq. ft, GARAGE: 640 sq. ft.
PATIO: 527 sq. ft, PORCH: 171 sq. ft, OPEN TO BELOW: 450 sq. ft
TOTAL: 3346 sq. ft
MEASUREMENTS CALCULATED BY V1Photos.com ARE DEEMED HIGHLY RELIABLE BUT NOT GUARANTEED.



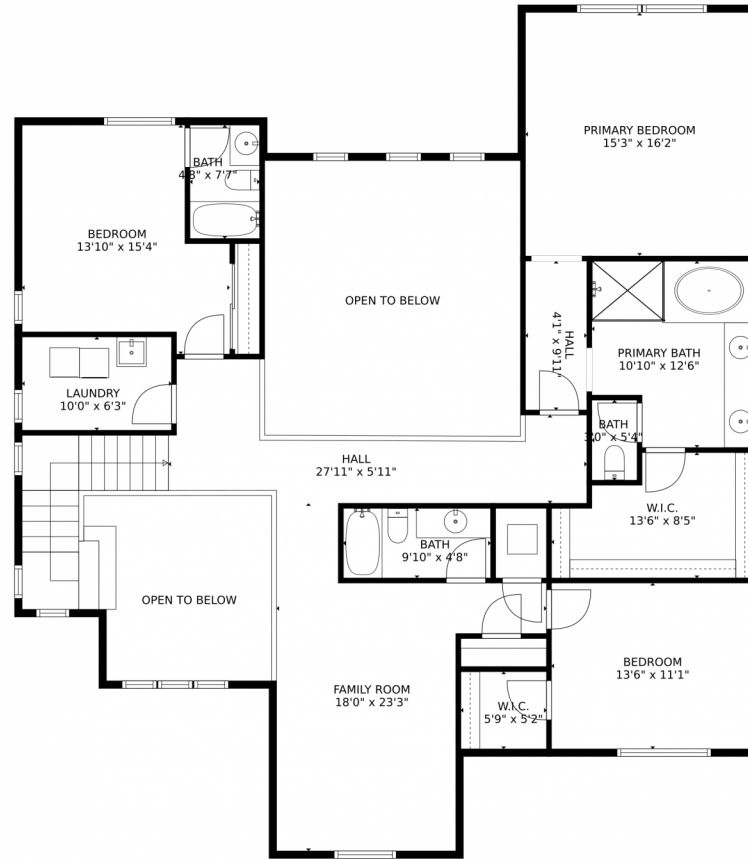
Disclaimer: Sizes and Dimensions are Approximate, Actual May Vary.



Julie Mostek
303-913-9234
jamostek@gmail.com



1768 Augustine Drive, Castle Rock, CO 80108 – Second Level



GROSS INTERNAL AREA
Below Ground: 0 sq. ft, FLOOR 2: 1710 sq. ft, FLOOR 3: 1636 sq. ft
EXCLUDED AREAS: LOW CEILING: 547 sq. ft, UNFINISHED BASEMENT: 892 sq. ft, GARAGE: 640 sq. ft.
PATIO: 527 sq. ft, PORCH: 171 sq. ft, OPEN TO BELOW: 450 sq. ft
TOTAL: 3346 sq. ft
MEASUREMENTS CALCULATED BY V1Photos.COM ARE DEEMED HIGHLY RELIABLE BUT NOT GUARANTEED.



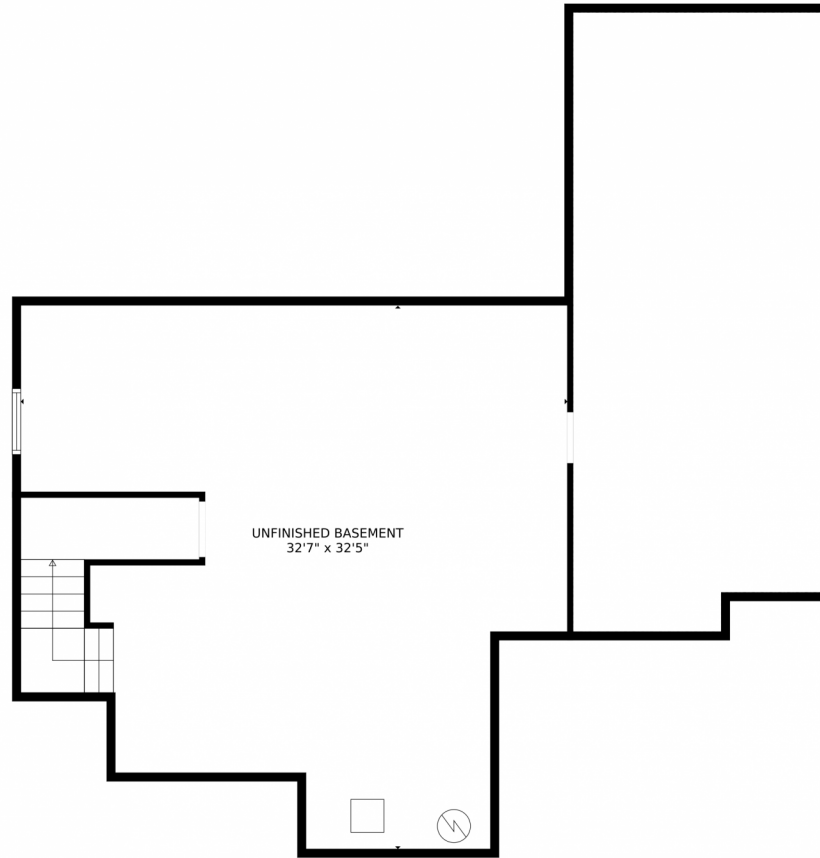
Disclaimer: Sizes and Dimensions are Approximate, Actual May Vary.



Julie Mostek
303-913-9234
jamostek@gmail.com



Scan code
for more
property
details



GROSS INTERNAL AREA
Below Ground: 0 sq. ft, FLOOR 2: 1710 sq. ft, FLOOR 3: 1636 sq. ft
EXCLUDED AREAS: LOW CEILING: 547 sq. ft, UNFINISHED BASEMENT: 892 sq. ft, GARAGE: 640 sq. ft,
PATIO: 527 sq. ft, PORCH: 171 sq. ft, OPEN TO BELOW: 450 sq. ft
TOTAL: 3346 sq. ft
MEASUREMENTS CALCULATED BY V1Photos.com ARE DEEMED HIGHLY RELIABLE BUT NOT GUARANTEED.



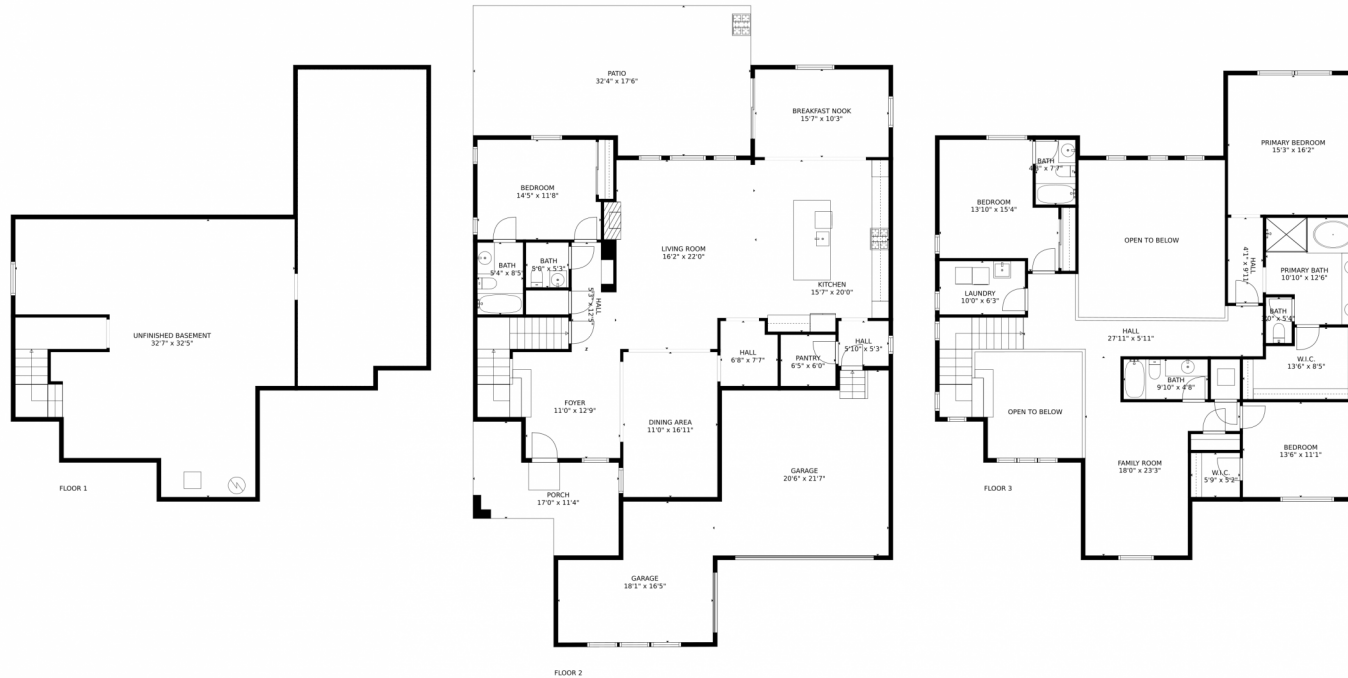
Disclaimer: Sizes and Dimensions are Approximate, Actual May Vary.



Julie Mostek
303-913-9234
jamostek@gmail.com



1768 Augustine Drive, Castle Rock, CO 80108 – All Levels



GROSS INTERNAL AREA
Below Ground: 0 sq. ft, FLOOR 2: 1710 sq. ft, FLOOR 3: 1636 sq. ft
EXCLUDED AREAS: LOW CEILING: 547 sq. ft, UNFINISHED BASEMENT: 892 sq. ft, GARAGE: 640 sq. ft.
PATIO: 527 sq. ft, PORCH: 171 sq. ft, OPEN TO BELOW: 450 sq. ft
TOTAL: 3346 sq. ft
MEASUREMENTS CALCULATED BY V1Photos.COM ARE DEEMED HIGHLY RELIABLE BUT NOT GUARANTEED.



Disclaimer: Sizes and Dimensions are Approximate, Actual May Vary.



Julie Mostek
303-913-9234
jamostek@gmail.com

