



 Single Family
  6476 SQFT
  6 Beds
  5/1 Baths
  3 Car
  0.27 Acre

PROPERTY DETAILS

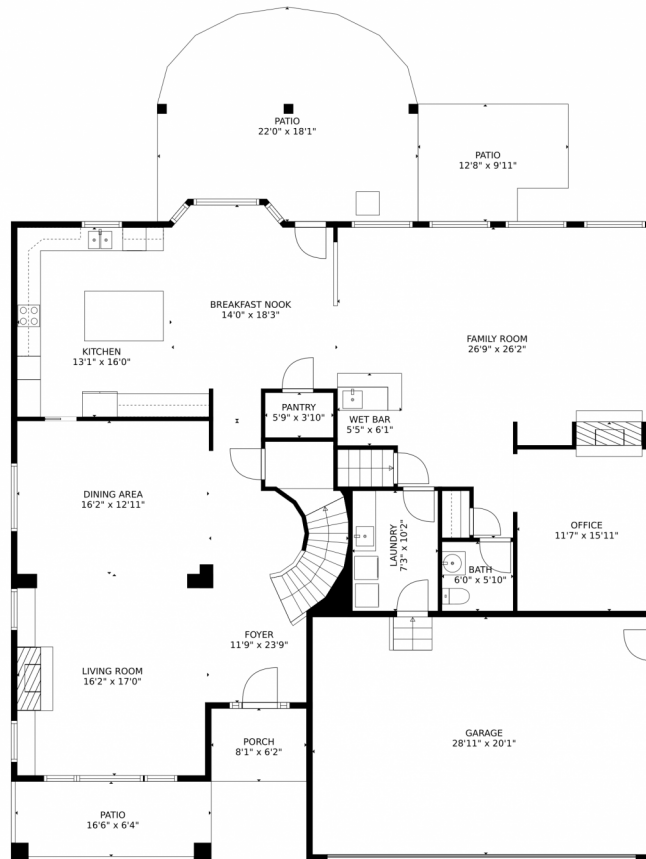
This stunning 6 bedroom, 6 bathroom home offers an incredible open floor plan for entertaining friends and family in style. The gourmet kitchen is well-equipped walk-in pantry, and plenty of counter space and an island to make meal prep a dream. The wet bar in family room provides the perfect spot for entertaining guests or enjoying your favorite beverages after a long day on the links. This home has been designed with you in mind; feel comfortable all year round as each level features its own HVAC system that will keep you warm in winter and cool during summer months. Relax in the spacious primary suite featuring vaulted ceilings, seating/reading area, 5 piece bath with jet tub, double sinks, walk in shower and ample walk-in closet space. Enjoy movie night or host game day in the finished basement with plenty of room for living area, pool table (for sale) and more ... the cherry on top is a private theater room ready for you to furnish & entertain. There are 3 fireplaces throughout the home in the living room, family room is double sided into the office and the Primary bedroom has its very own cozy fireplace. Beautiful wood floors, Tile & Carpet throughout. The 11,979 sq ft lot gives plenty of outdoor living potential too! You'll love having access to all the amenities including community pool, clubhouse & golf course as well as lots of nearby shopping & dining options. Don't miss your chance to own this truly amazing property - schedule your private tour today! you will have everything you need for luxurious living.



Tina Kulp
 303-489-6876
 tinakulp.tk@gmail.com
<http://lifedesignsrealestate.com>



5387 Spur Cross Tr, Parker, CO 80134 – Main Level



GROSS INTERNAL AREA
Below Ground: 1559 sq. ft, FLOOR 2: 2044 sq. ft, FLOOR 3: 2124 sq. ft
EXCLUDED AREAS: ROOM: 93 sq. ft, UTILITY: 261 sq. ft, GARAGE: 579 sq. ft,
PORCH: 50 sq. ft, PATIO: 567 sq. ft, OPEN TO BELOW: 403 sq. ft
TOTAL: 5727 sq. ft
MEASUREMENTS CALCULATED BY V1Photos.com ARE DEEMED HIGHLY RELIABLE BUT NOT GUARANTEED.



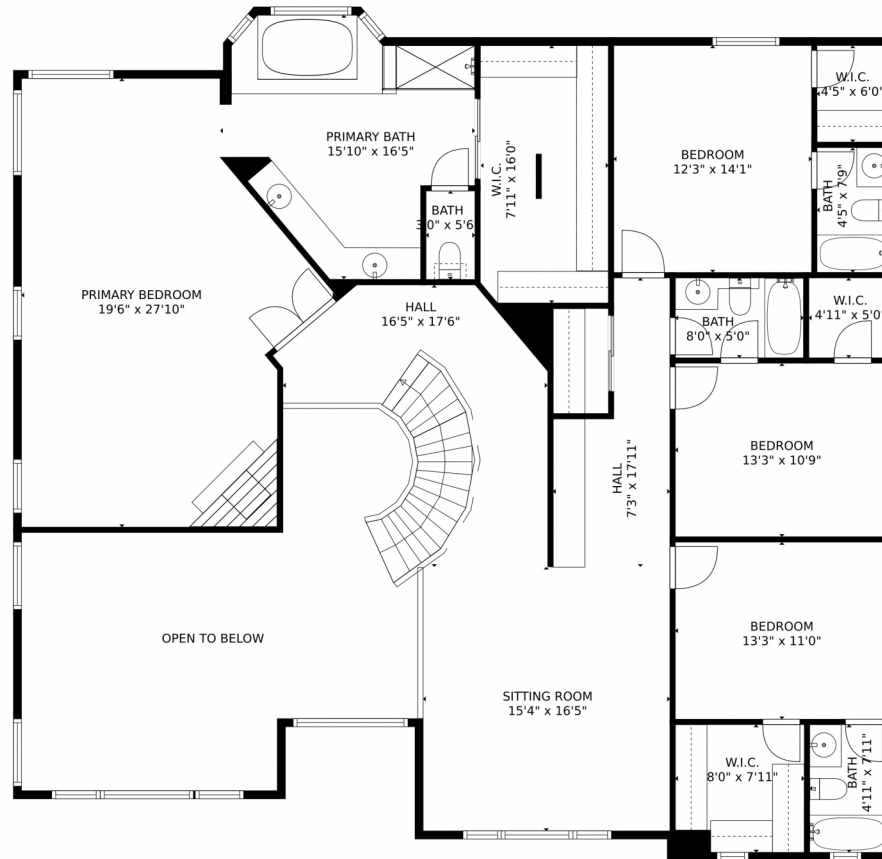
Disclaimer: Sizes and Dimensions are Approximate, Actual May Vary.



Tina Kulp
303-489-6876
tinakulp.tk@gmail.com
<http://lifedesignsrealestate.com>



5387 Spur Cross Tr, Parker, CO 80134 – Upper Level



GROSS INTERNAL AREA
Below Ground: 1559 sq. ft, FLOOR 2: 2044 sq. ft, FLOOR 3: 2124 sq. ft
EXCLUDED AREAS: ROOM: 93 sq. ft, UTILITY: 261 sq. ft, GARAGE: 579 sq. ft,
PORCH: 50 sq. ft, PATIO: 567 sq. ft, OPEN TO BELOW: 403 sq. ft
TOTAL: 5727 sq. ft
MEASUREMENTS CALCULATED BY V1Photos.COM ARE DEEMED HIGHLY RELIABLE BUT NOT GUARANTEED.



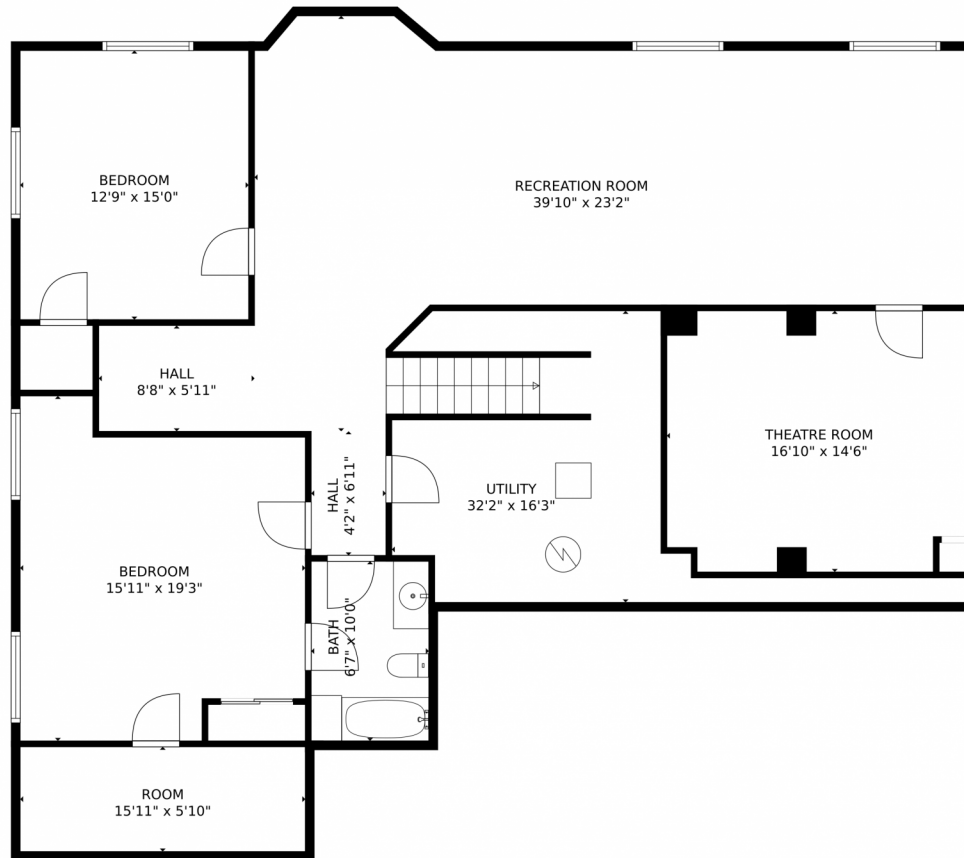
Disclaimer: Sizes and Dimensions are Approximate, Actual May Vary.



Tina Kulp
303-489-6876
tinakulp.tk@gmail.com
<http://lifedesignsrealestate.com>



5387 Spur Cross Tr, Parker, CO 80134 – Lower Level



GROSS INTERNAL AREA
Below Ground: 1559 sq. ft, FLOOR 2: 2044 sq. ft, FLOOR 3: 2124 sq. ft
EXCLUDED AREAS: ROOM: 93 sq. ft, UTILITY: 261 sq. ft, GARAGE: 579 sq. ft,
PORCH: 50 sq. ft, PATIO: 567 sq. ft, OPEN TO BELOW: 403 sq. ft
TOTAL: 5727 sq. ft
MEASUREMENTS CALCULATED BY V1Photos.com ARE DEEMED HIGHLY RELIABLE BUT NOT GUARANTEED.



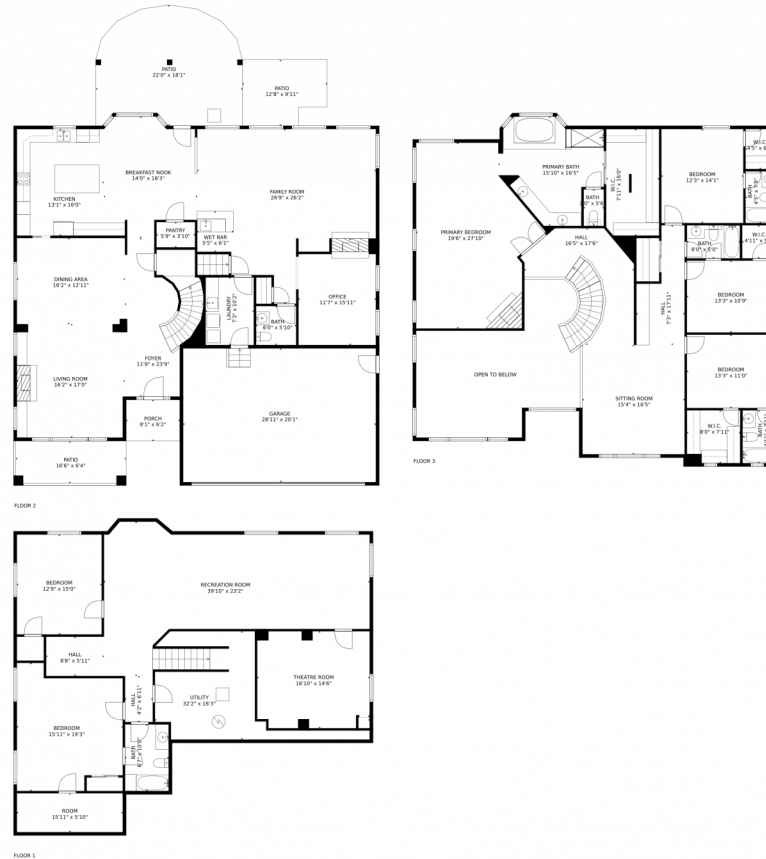
Disclaimer: Sizes and Dimensions are Approximate, Actual May Vary.



Tina Kulp
303-489-6876
tinakulp.tk@gmail.com
<http://lifedesignsrealestate.com>



5387 Spur Cross Tr, Parker, CO 80134 – All Levels



GROSS INTERNAL AREA
 Below Ground: 1559 sq. ft, FLOOR 2: 2044 sq. ft, FLOOR 3: 2124 sq. ft
 EXCLUDED AREAS: ROOM: 93 sq. ft, UTILITY: 261 sq. ft, GARAGE: 579 sq. ft,
 PORCH: 50 sq. ft, PATIO: 567 sq. ft, OPEN TO BELOW: 403 sq. ft
 TOTAL: 5727 sq. ft
 MEASUREMENTS CALCULATED BY V1Photos.COM ARE DEEMED HIGHLY RELIABLE BUT NOT GUARANTEED.



Disclaimer: Sizes and Dimensions are Approximate, Actual May Vary.



Tina Kulp
 303-489-6876
 tinakulp.tk@gmail.com
<http://lifedesignsrealestate.com>

