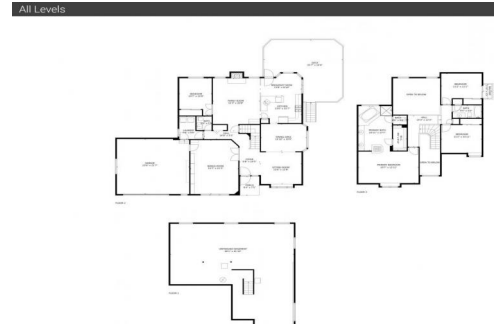




5335 Chambrey Court
Colorado Springs, CO 80919
COMMUNITY: Mountain Shadows



Single Family



3923 SQFT



4 Beds



2/1 Baths



2 Car



0.73 Acre



Michelle Blessing
719-649-4200
mblessing@erashields.com



Scan code
for more
property
details



5335 Chambrey Court, Colorado Springs, CO 80919 – Main Level



GROSS INTERNAL AREA
Below Ground: 8 sq. ft. FLOOR 2: 1659 sq. ft. FLOOR 3: 1075 sq. ft.
EXCLUDED AREAS: UNFINISHED BASEMENT: 1273 sq. ft. GARAGE: 507 sq. ft. DECK: 477 sq. ft.
PORCH: 47 sq. ft. FIREPLACE: 6 sq. ft. OPEN TO BELOW: 307 sq. ft.
BALCONY: 16 sq. ft.
TOTAL: 2742 sq. ft.
MEASUREMENTS CALCULATED BY V1Photos.COM ARE DEEMED HIGHLY RELIABLE BUT NOT GUARANTEED.



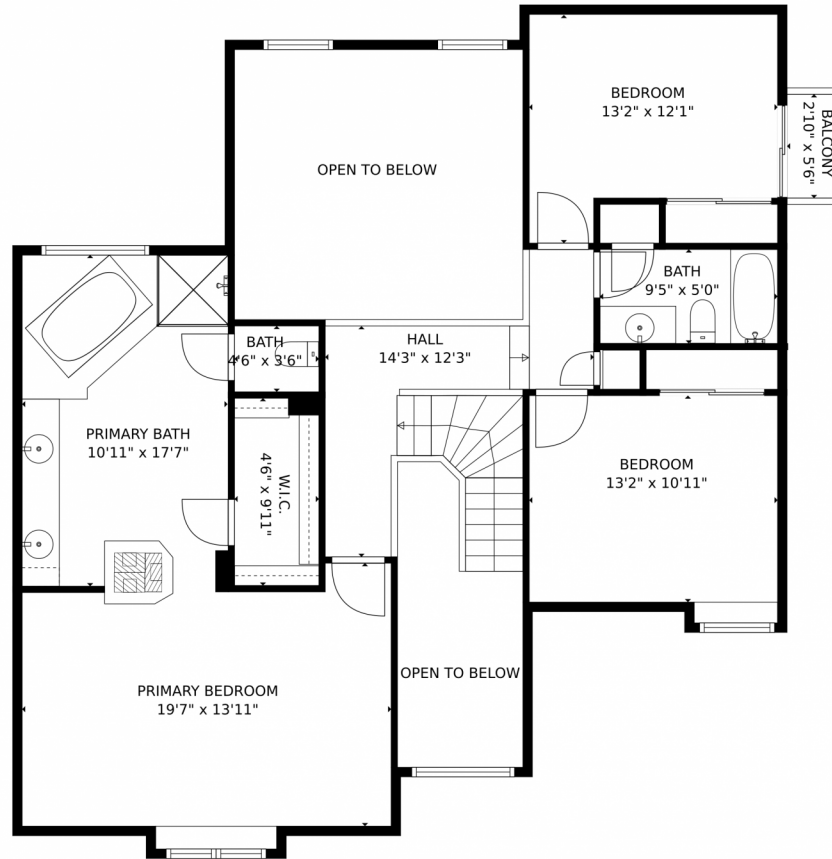
Disclaimer: Sizes and Dimensions are Approximate, Actual May Vary.



Michelle Blessing
719-649-4200
mblessing@erashields.com



5335 Chambrey Court, Colorado Springs, CO 80919 – Upper Level



GROSS INTERNAL AREA
Below Ground: 8 sq. ft. FLOOR 2: 1659 sq. ft. FLOOR 3: 1075 sq. ft.
EXCLUDED AREAS: UNFINISHED BASEMENT: 1273 sq. ft. GARAGE: 507 sq. ft. DECK: 477 sq. ft.
PORCH: 47 sq. ft. FIREPLACE: 6 sq. ft. OPEN TO BELOW: 307 sq. ft.
BALCONY: 16 sq. ft.
TOTAL: 2742 sq. ft.
MEASUREMENTS CALCULATED BY V1Photos.com ARE DEEMED HIGHLY RELIABLE BUT NOT GUARANTEED.



Disclaimer: Sizes and Dimensions are Approximate, Actual May Vary.

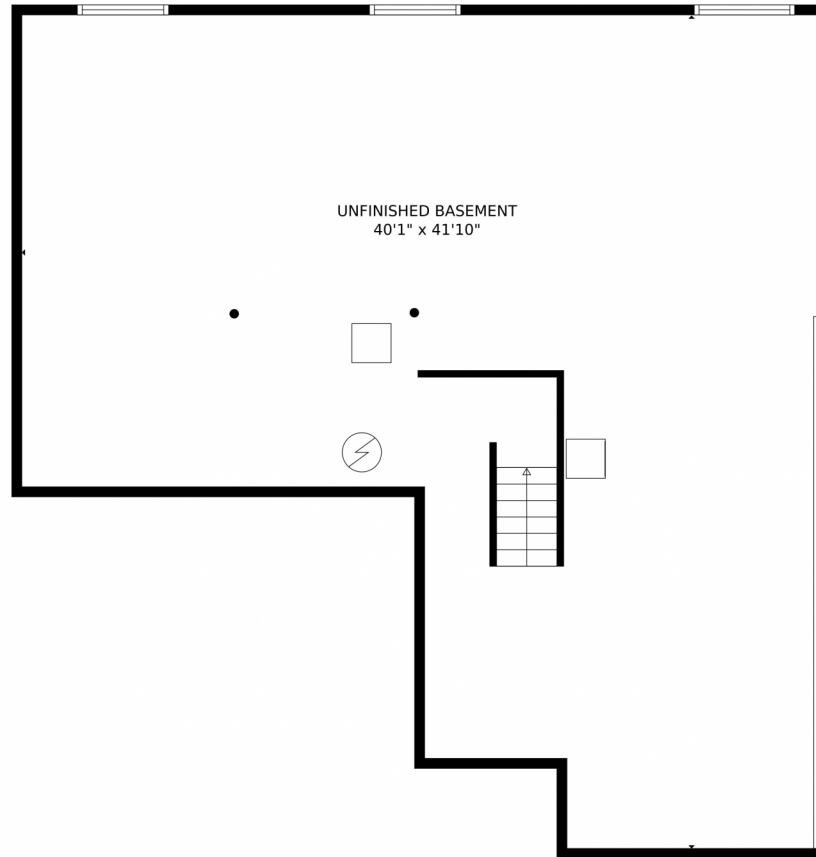


Michelle Blessing
719-649-4200
mblessing@erashields.com



Scan code for more property details

5335 Chambrey Court, Colorado Springs, CO 80919 – Lower Level



GROSS INTERNAL AREA
Below Ground: 8 sq. ft. FLOOR 2: 1659 sq. ft. FLOOR 3: 1075 sq. ft.
EXCLUDED AREAS: UNFINISHED BASEMENT: 1273 sq. ft. GARAGE: 507 sq. ft. DECK: 477 sq. ft.
PORCH: 47 sq. ft. FIREPLACE: 6 sq. ft. OPEN TO BELOW: 307 sq. ft.
BALCONY: 16 sq. ft.
TOTAL: 2742 sq. ft.
MEASUREMENTS CALCULATED BY V1Photos.com ARE DEEMED HIGHLY RELIABLE BUT NOT GUARANTEED.



Disclaimer: Sizes and Dimensions are Approximate, Actual May Vary.



Michelle Blessing
719-649-4200
mblessing@erashields.com



5335 Chambrey Court, Colorado Springs, CO 80919 – All Levels



GROSS INTERNAL AREA
Below Ground: 8 sq. ft. FLOOR 2: 1659 sq. ft. FLOOR 3: 1075 sq. ft.
EXCLUDED AREAS: UNFINISHED BASEMENT: 1273 sq. ft., GARAGE: 507 sq. ft., DECK: 477 sq. ft.,
PORCH: 47 sq. ft., FIREPLACE: 6 sq. ft., OPEN TO BELOW: 307 sq. ft.,
BALCONY: 16 sq. ft.
TOTAL: 2742 sq. ft.
MEASUREMENTS CALCULATED BY V1Photos.com ARE DEEMED HIGHLY RELIABLE BUT NOT GUARANTEED.



Disclaimer: Sizes and Dimensions are Approximate, Actual May Vary.



Michelle Blessing
719-649-4200
mblessing@erashields.com

